




Exhibit: Test Setup Photos

FCC ID: 2BCGD-CLDHRV

Report File #: 7169013070RF-000

| | | |
|-------------|----------------------------|---|
| Client | Starfish Medical |  |
| Product | Inmedix CloudHRV | |
| Standard(s) | FCC Part 15 Subpart 15.247 | |

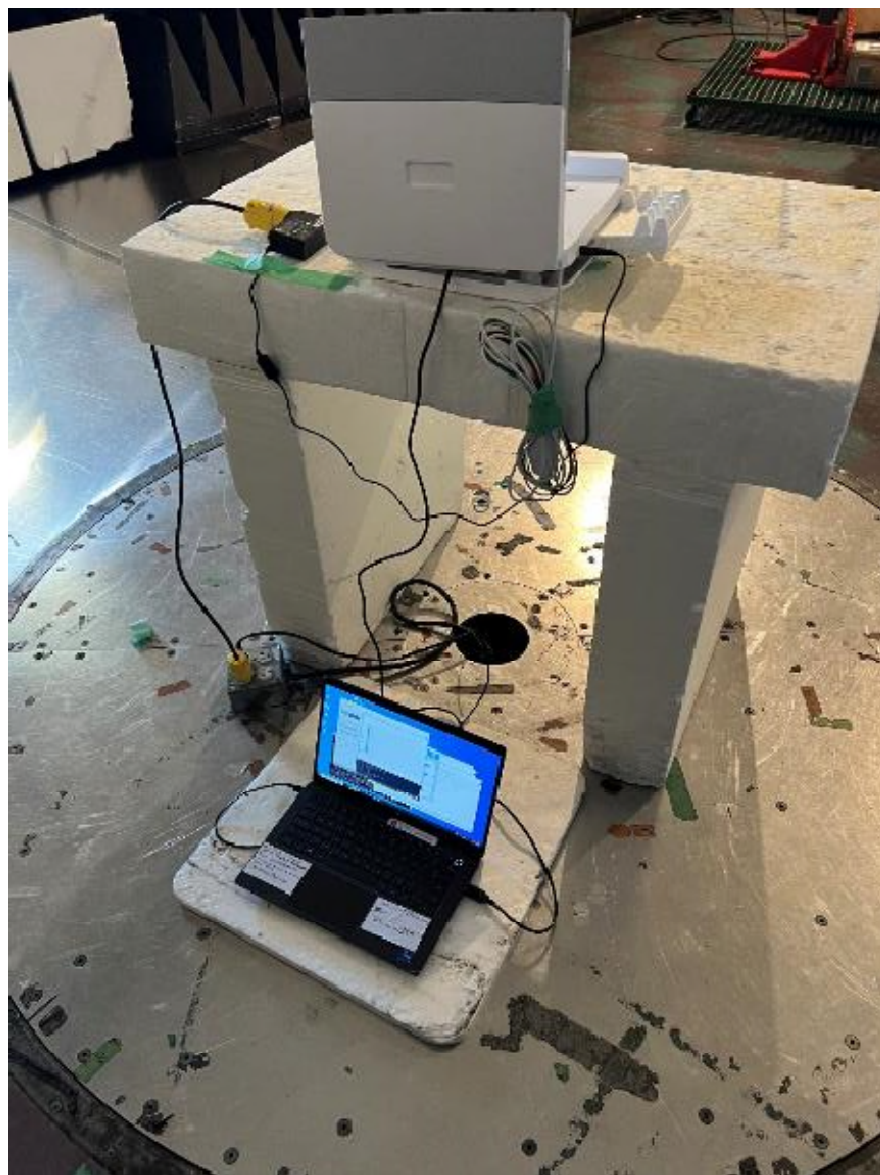


Figure 1 – Radiated Emissions Setup

| | | |
|-------------|----------------------------|---|
| Client | Starfish Medical |  |
| Product | Inmedix CloudHRV | |
| Standard(s) | FCC Part 15 Subpart 15.247 | |



Figure 2 – Radiated Emissions Setup
9kHz – 30MHz



| | | |
|-------------|----------------------------|---|
| Client | Starfish Medical |  |
| Product | Inmedix CloudHRV | |
| Standard(s) | FCC Part 15 Subpart 15.247 | |



Figure 3 – Radiated Emissions Setup
30MHz – 1GHz

Note: As per ANSI C63.10-2013 Clause 6.3.1, below 1GHz, the height of the EUT was set to 80cm. Above 1GHz, the height was raised to 1.5m.

| | | |
|-------------|----------------------------|---|
| Client | Starfish Medical |  |
| Product | Inmedix CloudHRV | |
| Standard(s) | FCC Part 15 Subpart 15.247 | |

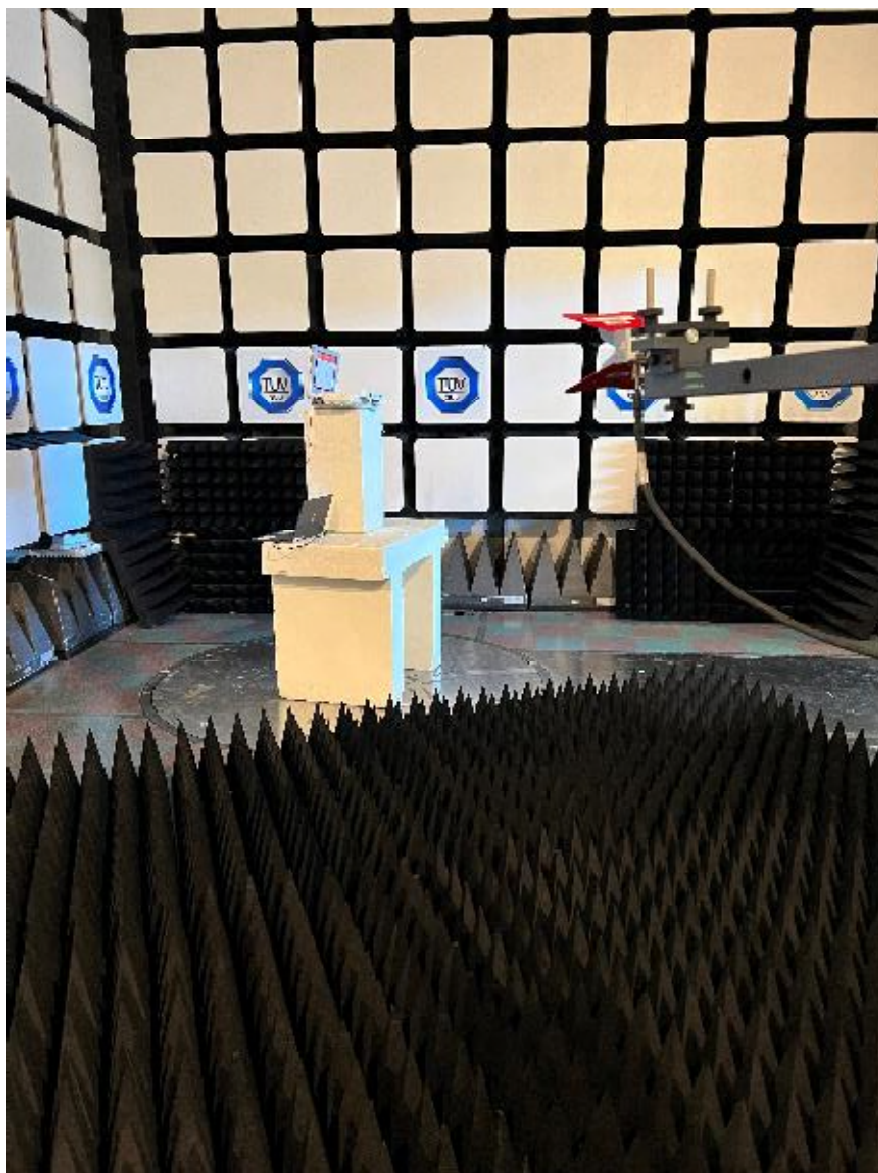


Figure 4 – Radiated Emissions Setup
1GHz – 6GHz

Note: As per ANSI C63.10-2013 Clause 6.3.1, above 1GHz, the height of the EUT was set to 1.5m.

| | | |
|-------------|----------------------------|---|
| Client | Starfish Medical |  |
| Product | Inmedix CloudHRV | |
| Standard(s) | FCC Part 15 Subpart 15.247 | |



Figure 5 – Radiated Emissions Setup
6GHz – 12GHz

| | | |
|-------------|----------------------------|---|
| Client | Starfish Medical |  |
| Product | Inmedix CloudHRV | |
| Standard(s) | FCC Part 15 Subpart 15.247 | |

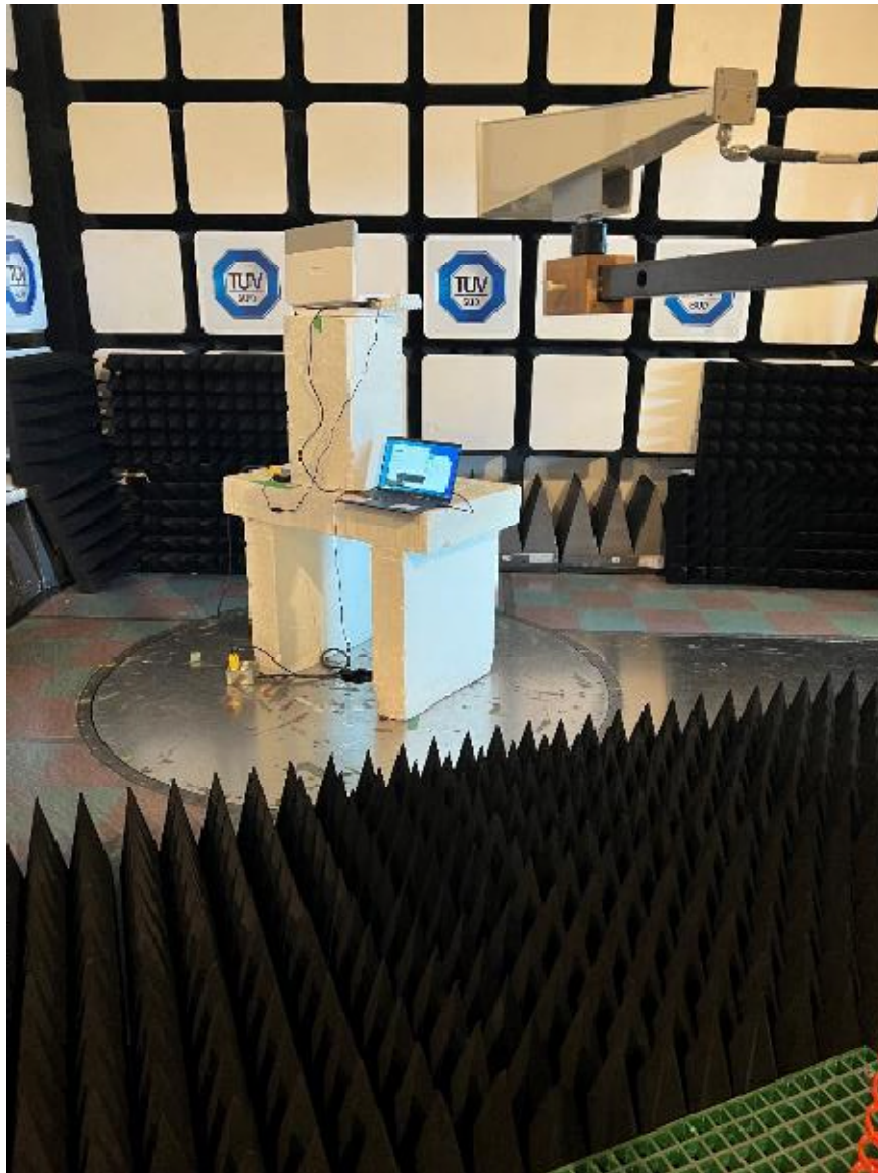


Figure 6 – Radiated Emissions Setup
12GHz – 18GHz

| | | |
|-------------|----------------------------|---|
| Client | Starfish Medical |  |
| Product | Inmedix CloudHRV | |
| Standard(s) | FCC Part 15 Subpart 15.247 | |



Figure 7 – Radiated Emissions Setup
18GHz – 26.5GHz


| | | |
|-------------|----------------------------|---|
| Client | Starfish Medical |  |
| Product | Inmedix CloudHRV | |
| Standard(s) | FCC Part 15 Subpart 15.247 | |



Figure 8 – Radiated Emissions Setup
26.5GHz – 40GHz

| | | |
|-------------|----------------------------|---|
| Client | Starfish Medical |  |
| Product | Inmedix CloudHRV | |
| Standard(s) | FCC Part 15 Subpart 15.247 | |

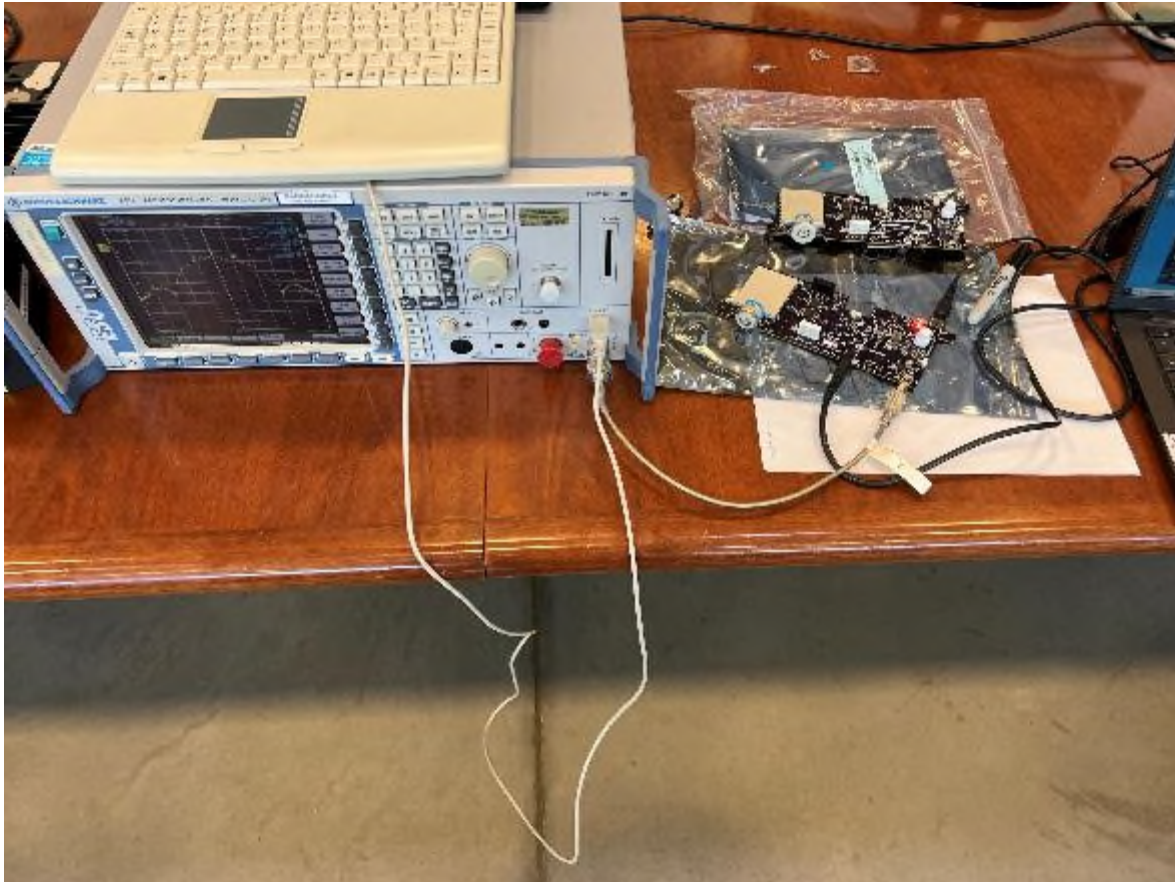


Figure 9 – Antenna Port Conducted Emissions Setup

| | | |
|-------------|----------------------------|---|
| Client | Starfish Medical |  |
| Product | Inmedix CloudHRV | |
| Standard(s) | FCC Part 15 Subpart 15.247 | |



Figure 10 – Conducted Emissions Setup

| | | |
|-------------|----------------------------|---|
| Client | Starfish Medical |  |
| Product | Inmedix CloudHRV | |
| Standard(s) | FCC Part 15 Subpart 15.247 | |



Figure 11 – Conducted Emissions Setup