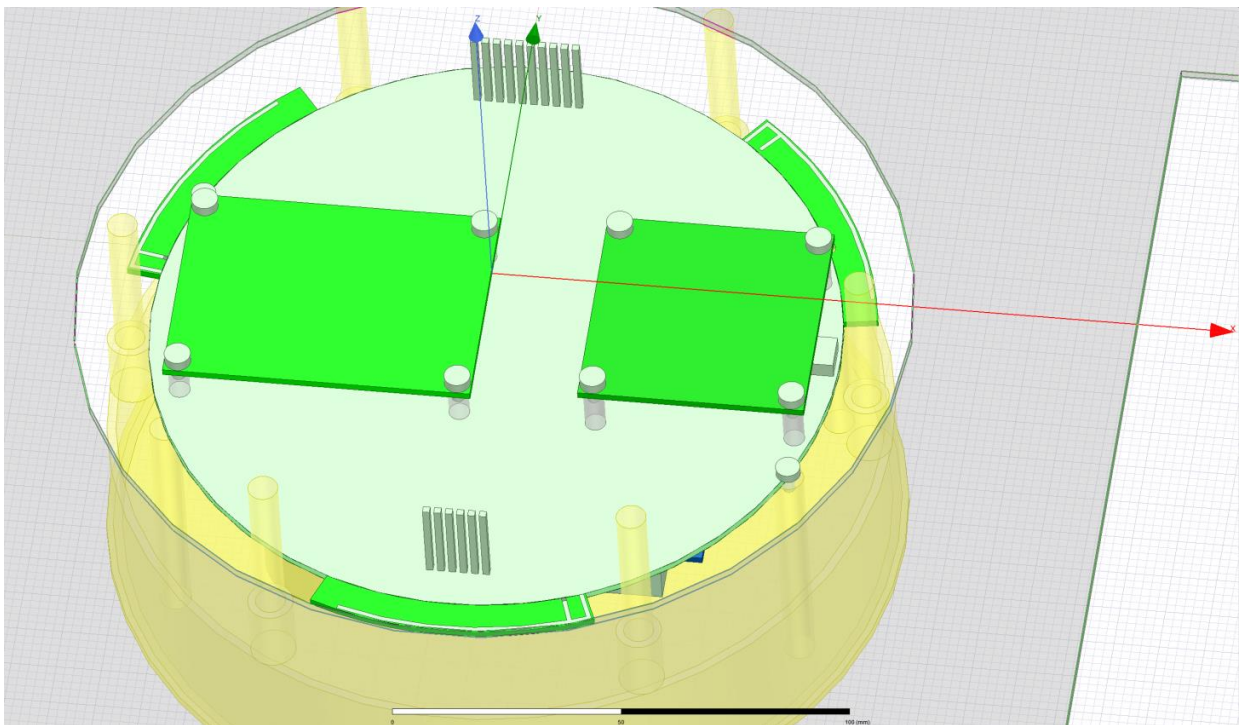


ITP Antenna Datasheet – Rev A

DESCRIPTION

The Interactive TouchPoint (ITP) has an integrated antenna designed to operate in the 902-928MHz range. The antenna is designed to achieve a directional radiation pattern with circular polarization. The antenna is composed of an array of 3 planar inverted-F antennas (PIFAs) with two of them driven simultaneously and one acting as a passive resonator. By driving two of the three PIFAs with differing phase relationships circular polarization is achieved. The antenna is not interchangeable and is permanently integrated into the device.

DEVICE PICTURE



ANTENNA PARAMETERS

PARAMETER	SPECIFICATION
Frequency Range	902-928MHz
Peak Gain	1.45 (1.63dBi)
Return Loss	< -10dB (902-950MHz)
Impedance	50 Ohms
Radiation Pattern	Directional
Half-Power Bandwidth	Vertical 30°
Polarization	Circular
VSWR	< 2:1 (902-950MHz)
Connector	U.FL (x3)

ITP Antenna Datasheet – Rev A

ANTENNA GRAPHS

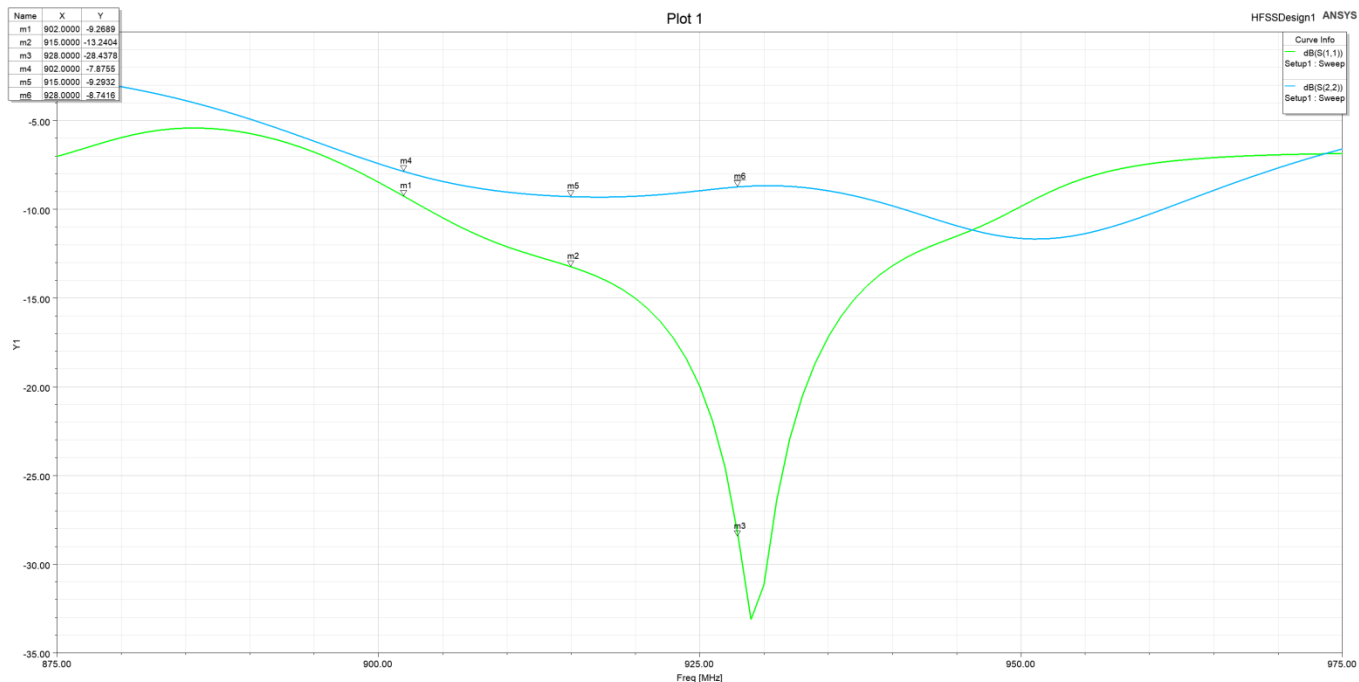


Figure 1 – S11 Data (50 ohms)

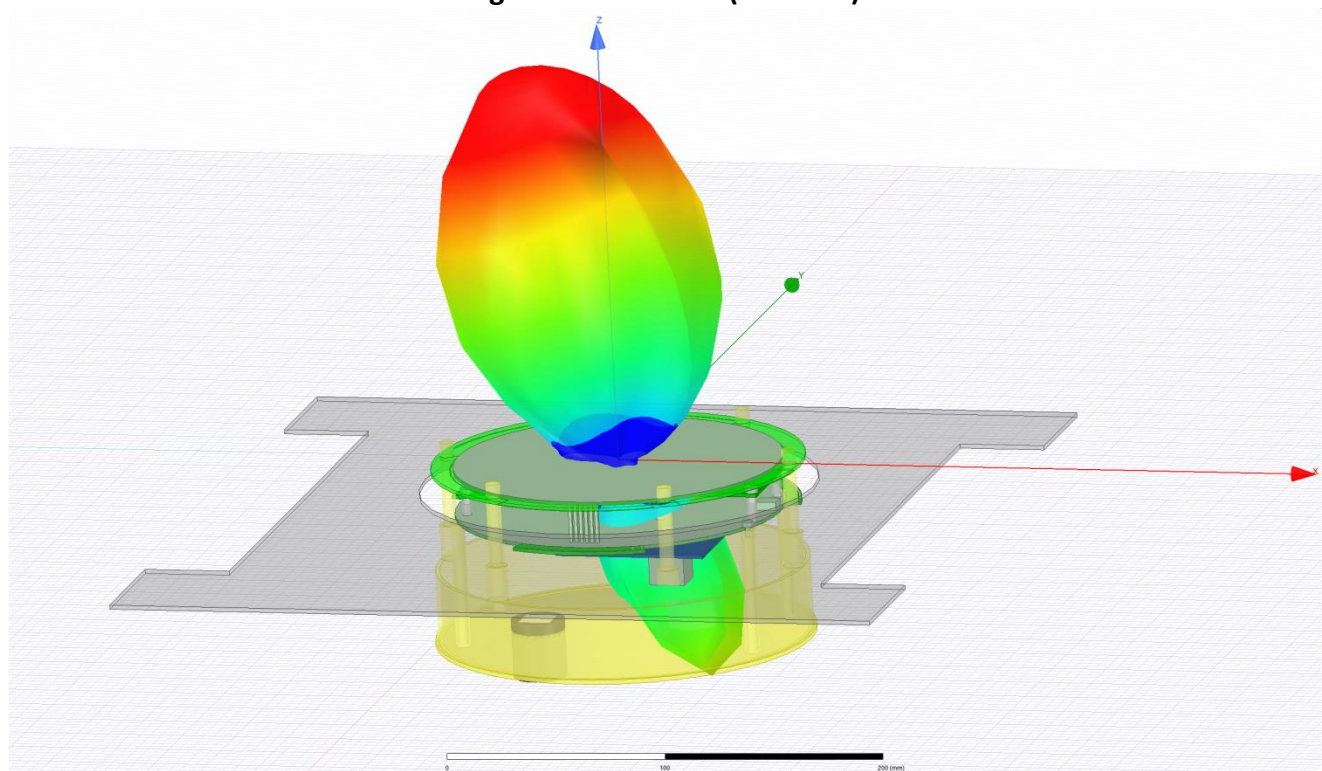


Figure 2 – 3D Radiation pattern

ITP Antenna Datasheet – Rev A

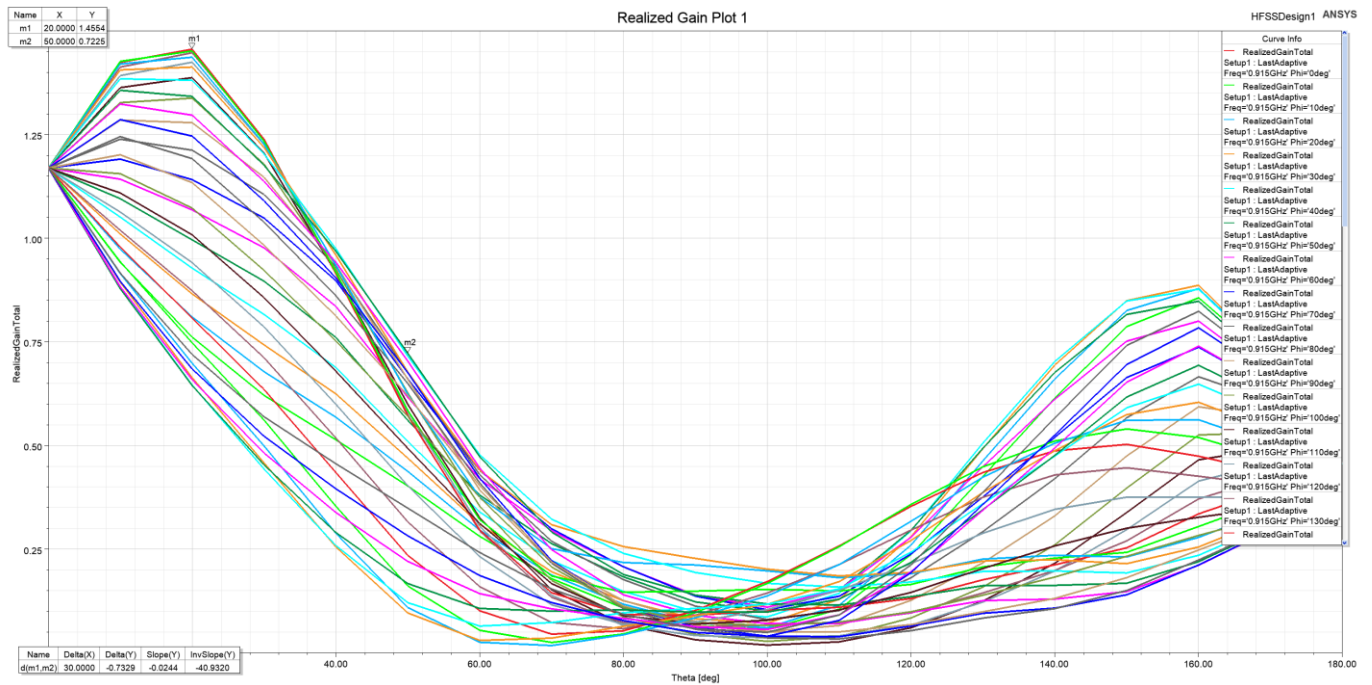


Figure 3 – 2D Gain Data (Gain expressed in linear quantity not dBi)