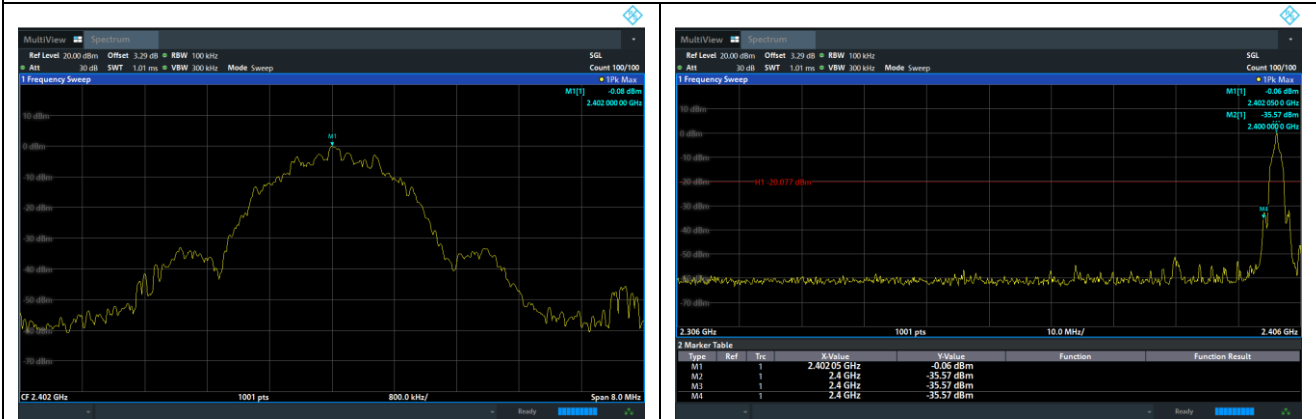


BLE 2M: Band Edge, Left Side

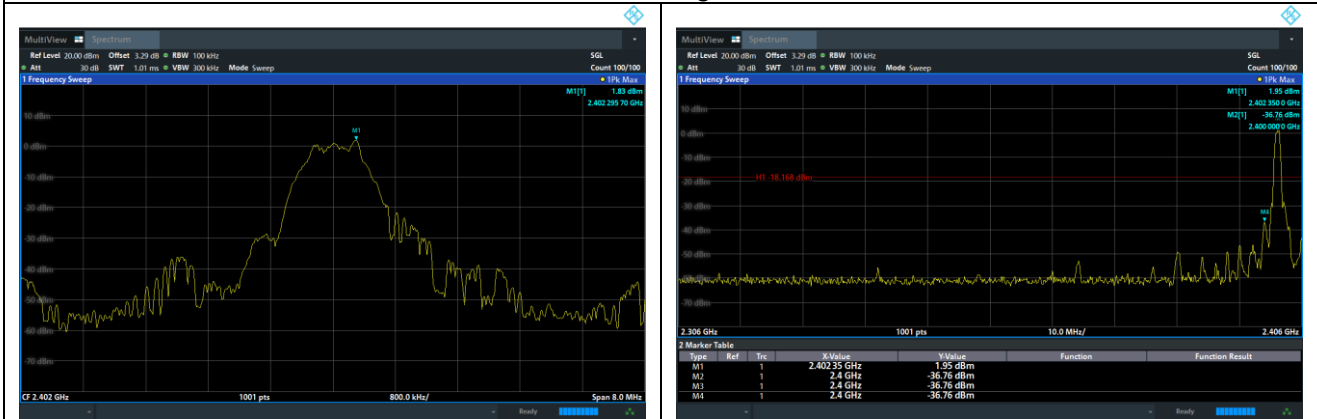


BLE 2M: Band Edge, Right Side

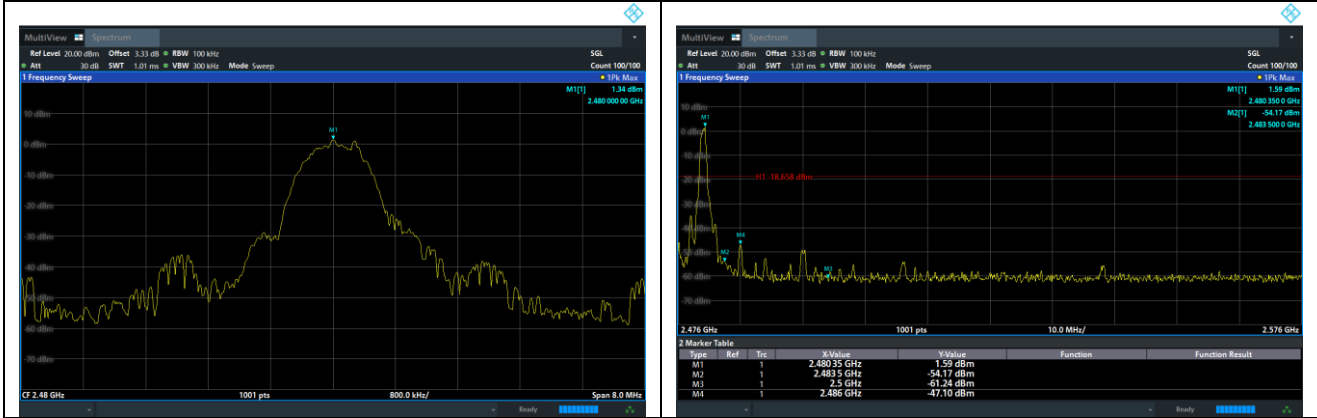


ANT 2:

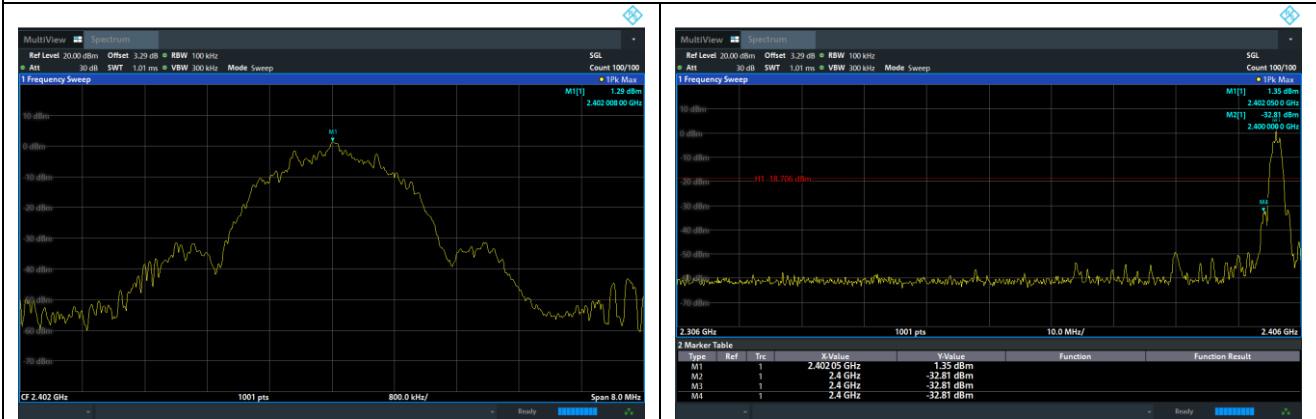
BLE 1M: Band Edge, Left Side



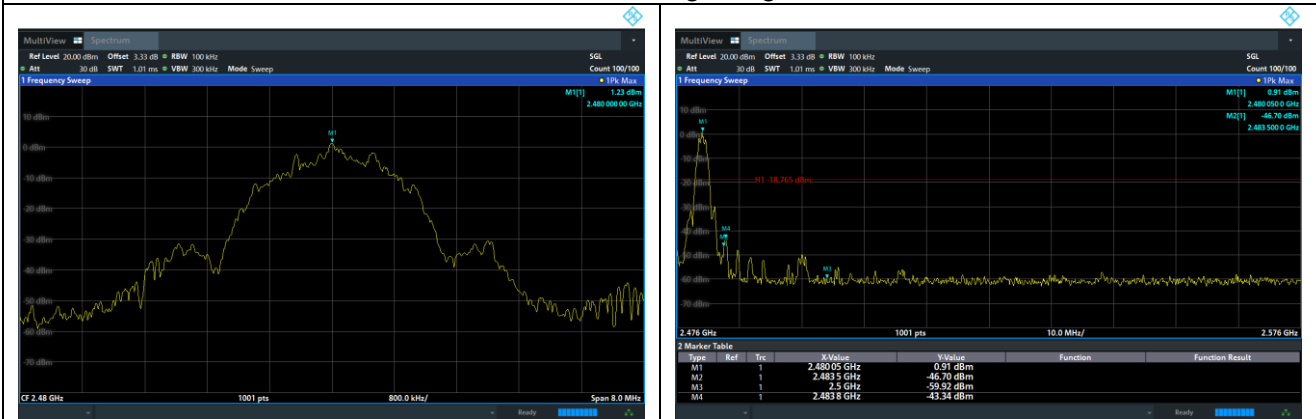
BLE 1M: Band Edge, Right Side



BLE 2M: Band Edge, Left Side



BLE 2M: Band Edge, Right Side



5.9 Spurious RF Conducted Emissions

5.9.1 Limit

Below -20dB of the highest emission level in operating band.

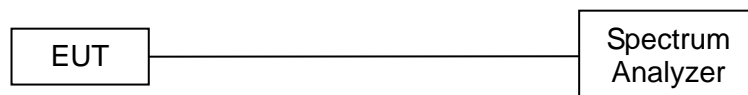
5.9.2 Measuring Instruments

The Measuring equipment is listed in the section 4 of this test report.

5.9.3 Test Procedure

The Spurious RF conducted emissions compliance of RF radiated emission should be measured by following the guidance in ANSI C63.10-2020 with respect to maximizing the emission by rotating the EUT, measuring the emission while the EUT is situated in three orthogonal planes (if appropriate), adjusting the measurement antenna height and polarization etc. Set RBW=100kHz and VBW=300kHz to measure the peak field strength, and measure frequency range from 9kHz to 26.5GHz.

5.9.4 Test Setup



5.9.5 Test Results

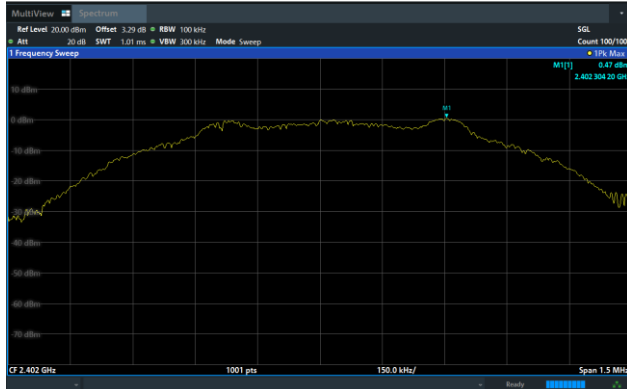
Note:

1: The measurement frequency range is from 9kHz to the 10th harmonic of the fundamental frequency. The lowest, middle and highest channels are tested to verify the spurious emissions and band edge measurement data.

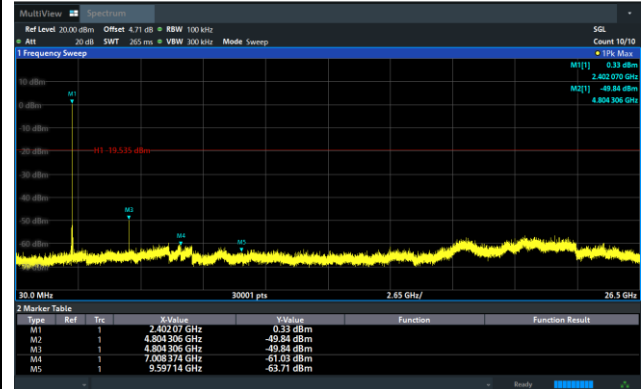
ANT 1:

BLE 1M

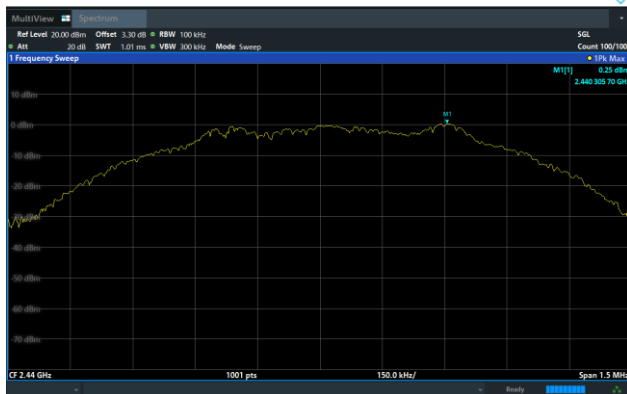
GFSK on Channel 00



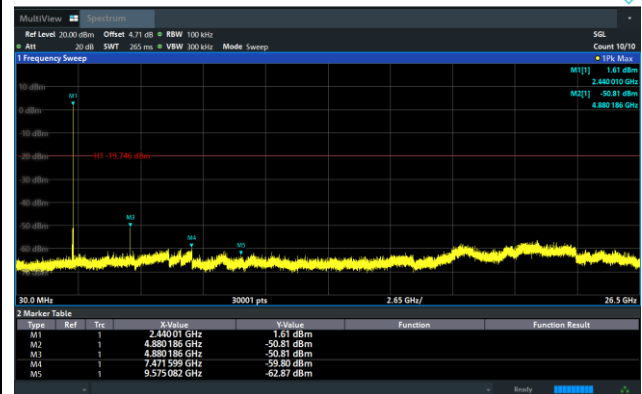
GFSK on Channel 00



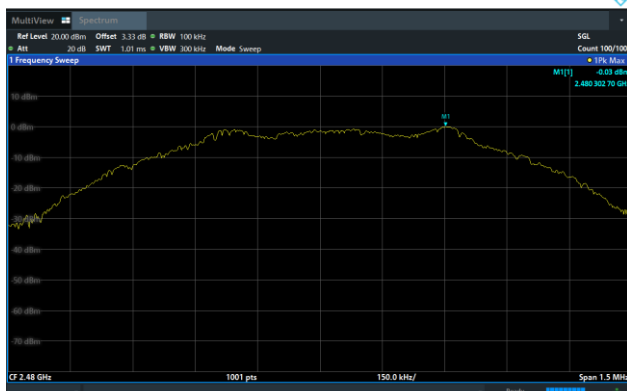
GFSK on Channel 19



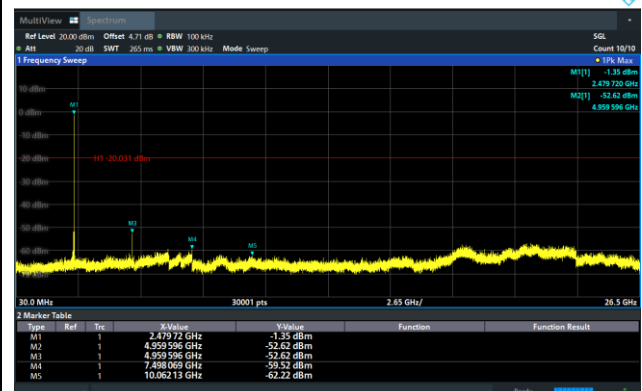
GFSK on Channel 19



GFSK on Channel 39

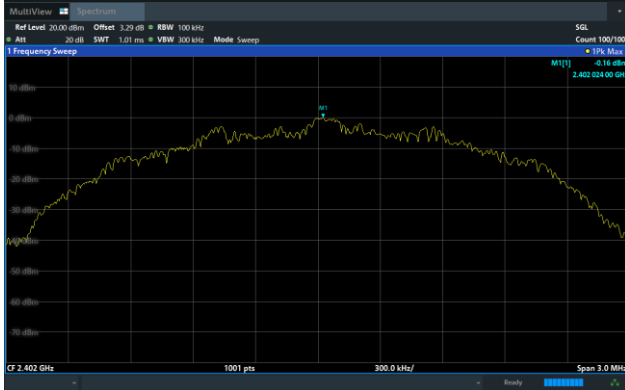


GFSK on Channel 39

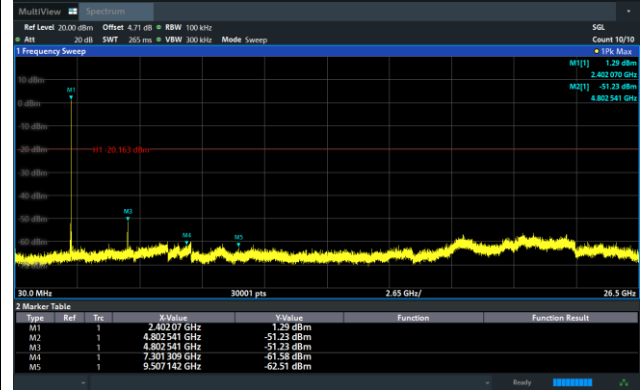


BLE 2M

GFSK on Channel 00



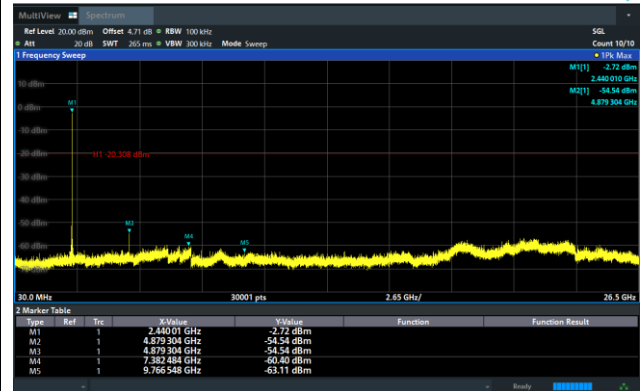
GFSK on Channel 00



GFSK on Channel 19



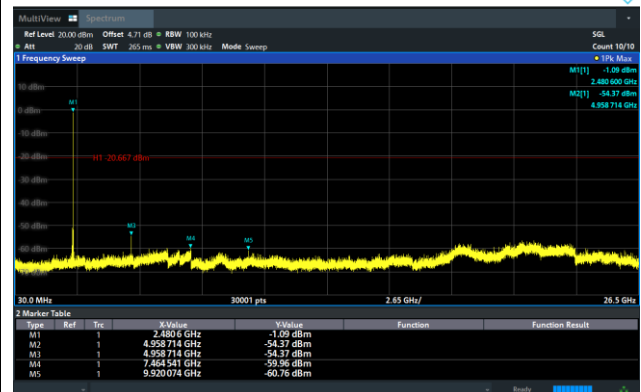
GFSK on Channel 19



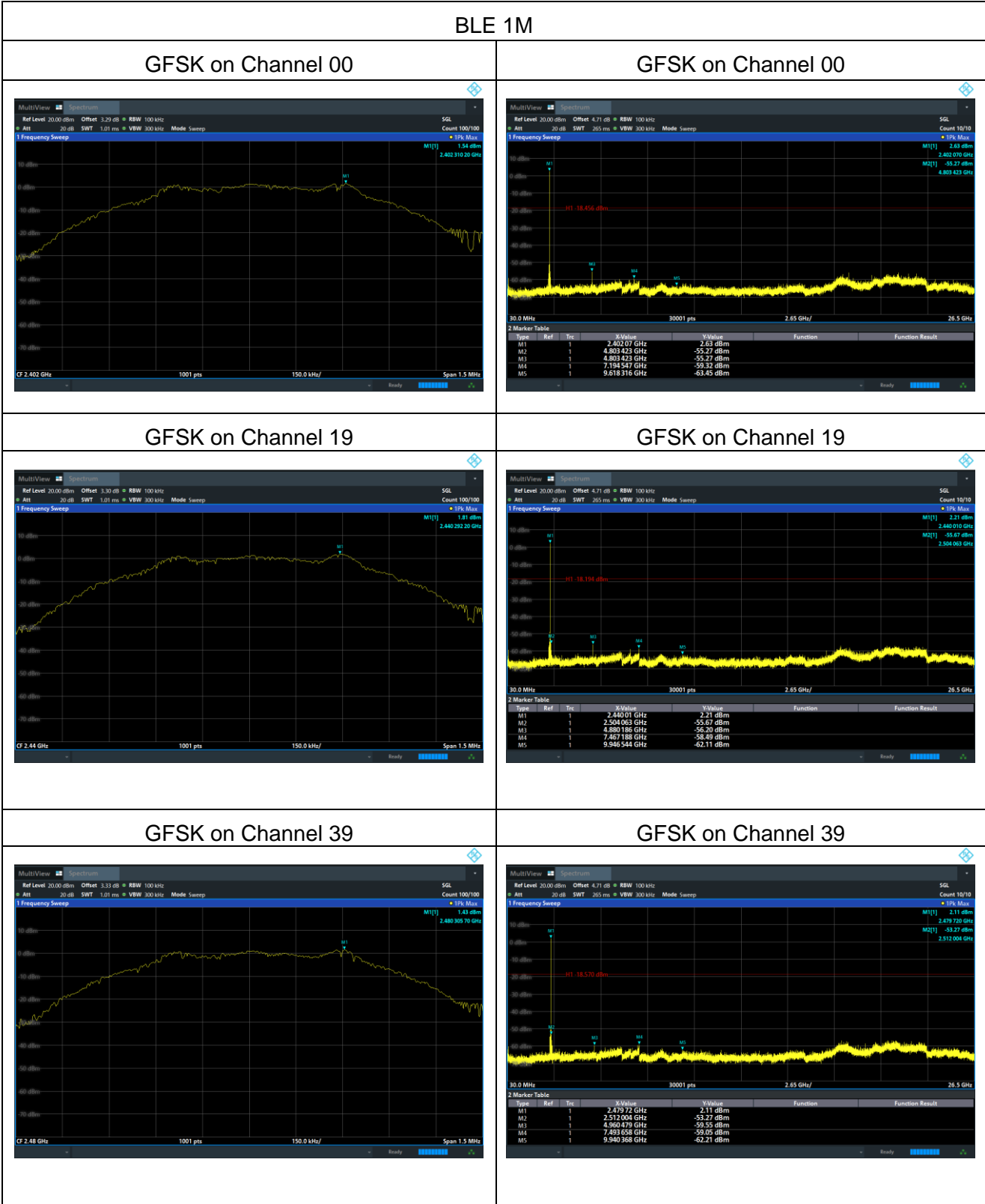
GFSK on Channel 39



GFSK on Channel 39

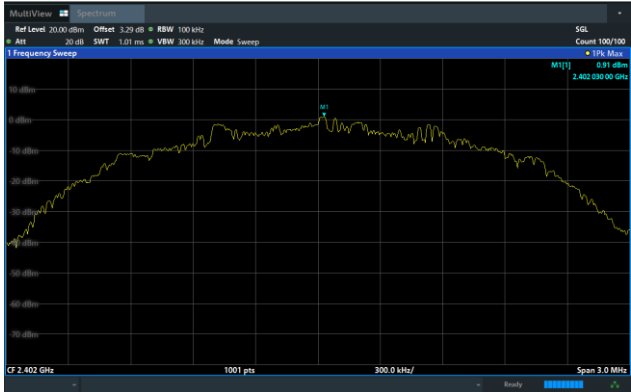


ANT 2:

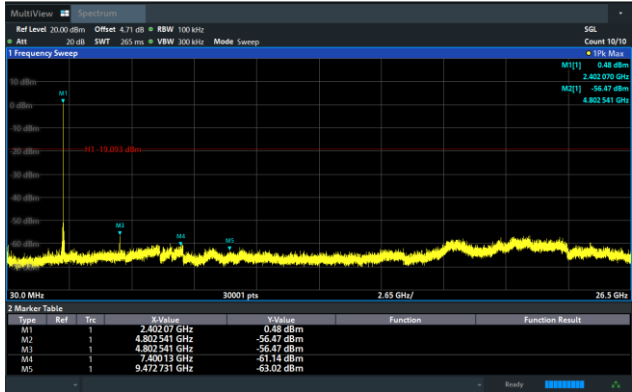


BLE 2M

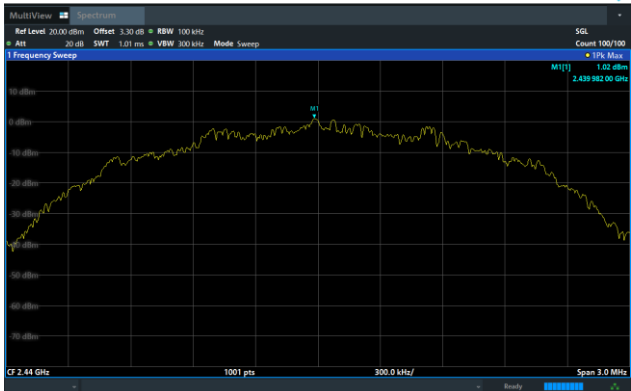
GFSK on Channel 00



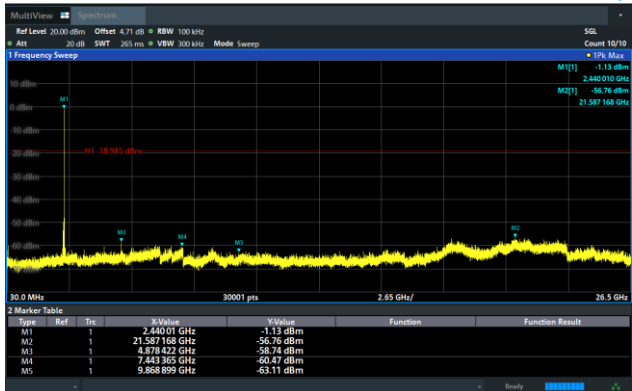
GFSK on Channel 00



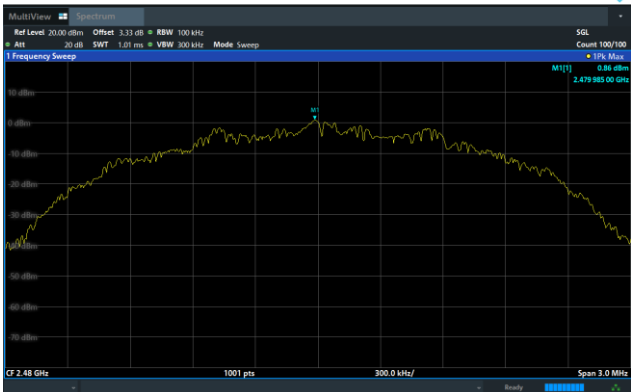
GFSK on Channel 19



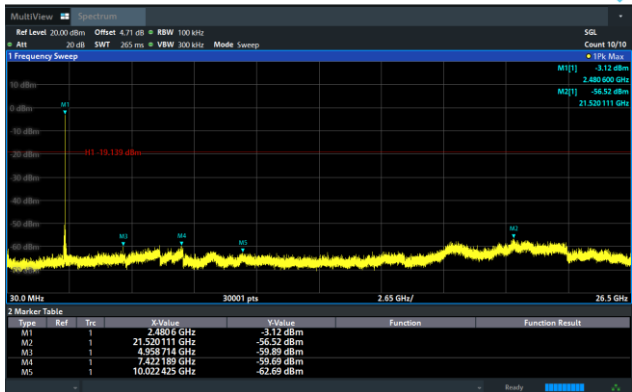
GFSK on Channel 19



GFSK on Channel 39

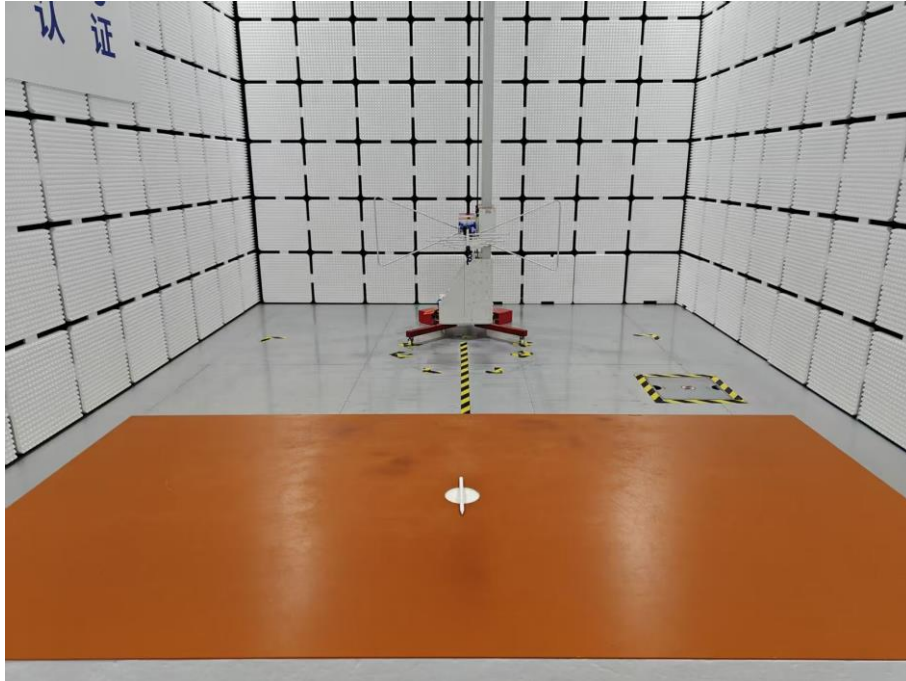


GFSK on Channel 39



6 Photographs of the Test Setup

Radiated Emission Below 1GHz



Radiated Emission Above 1GHz



Conducted Emission



7 Photographs of the EUT

Photo 1

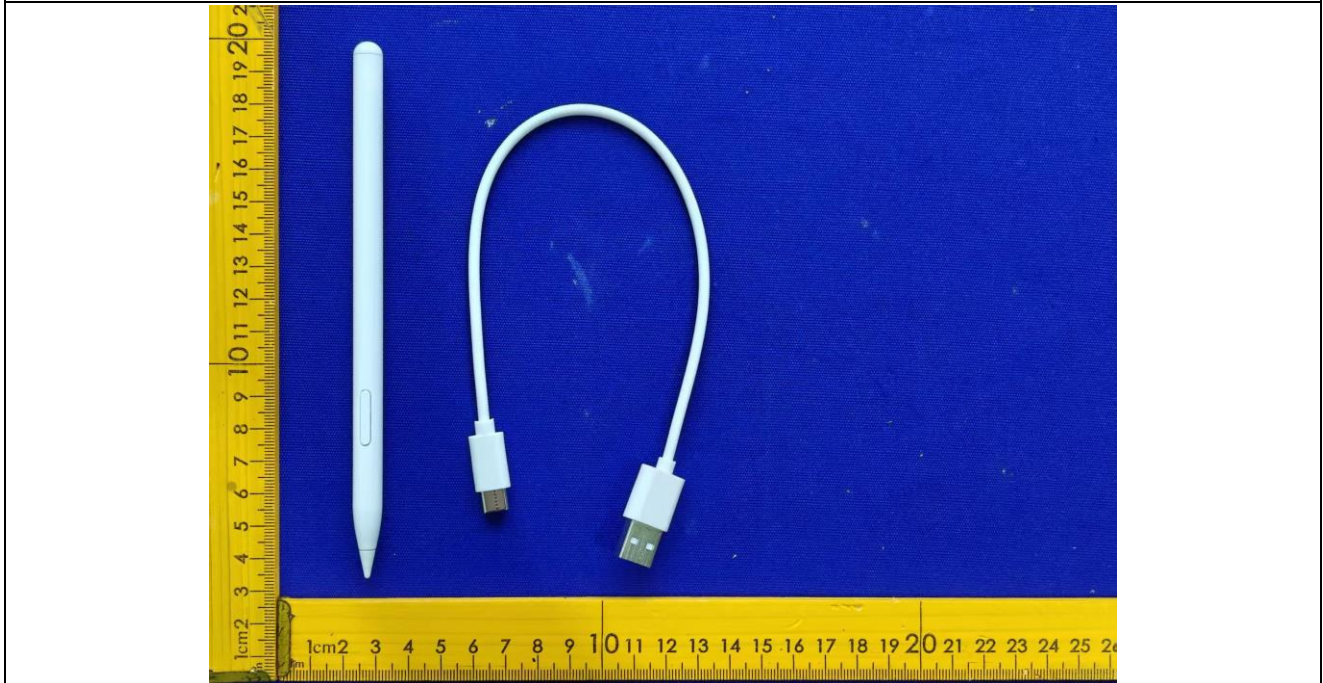


Photo 2

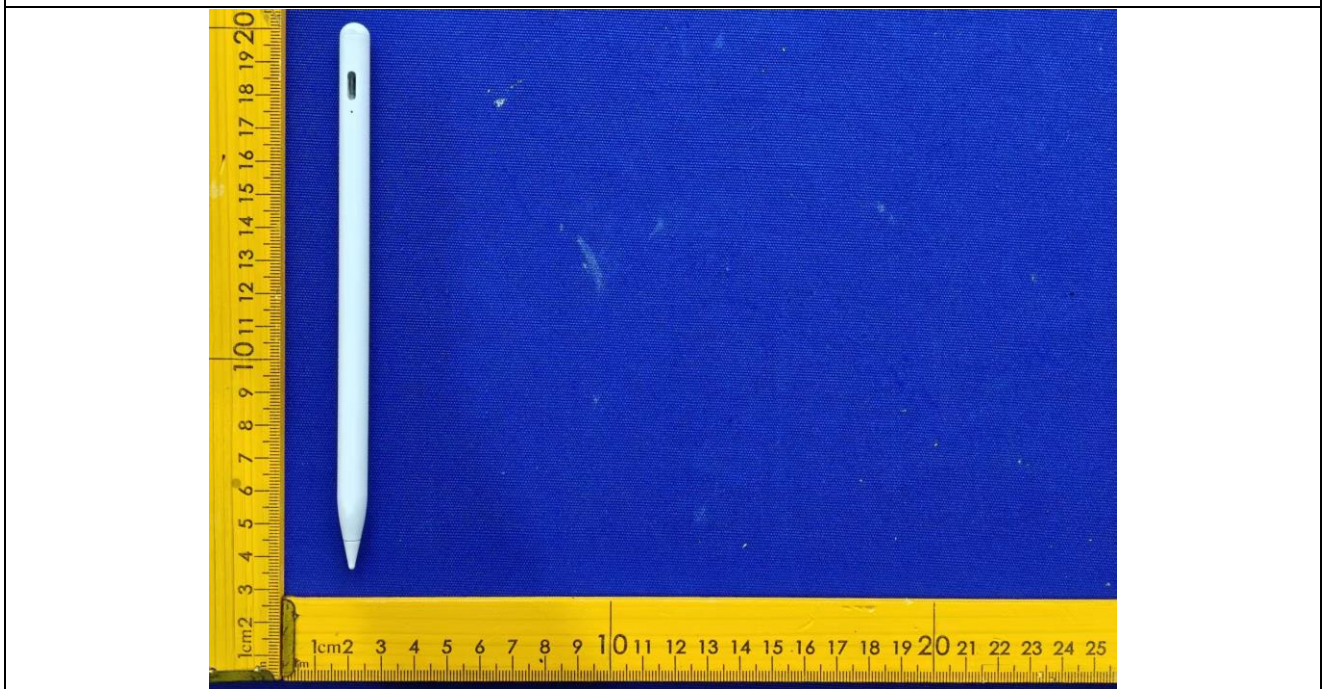


Photo 3

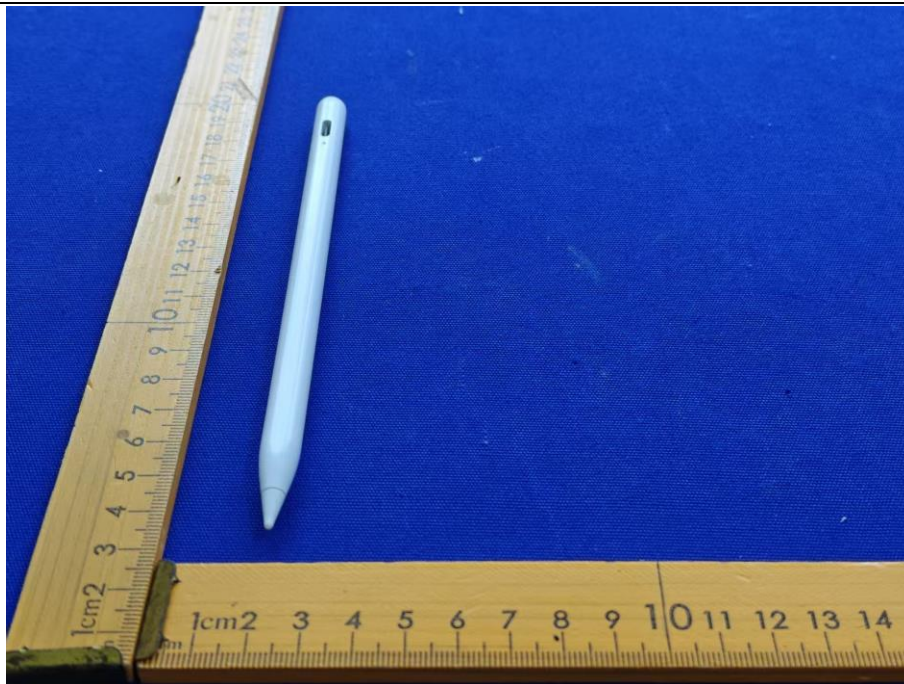


Photo 4

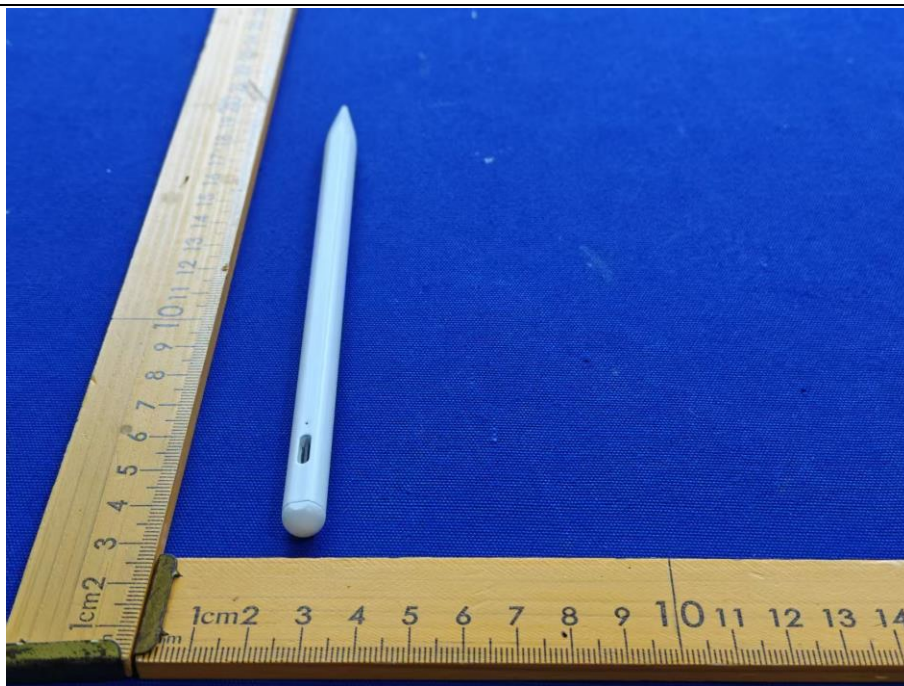


Photo 5



Photo 6



Photo 7

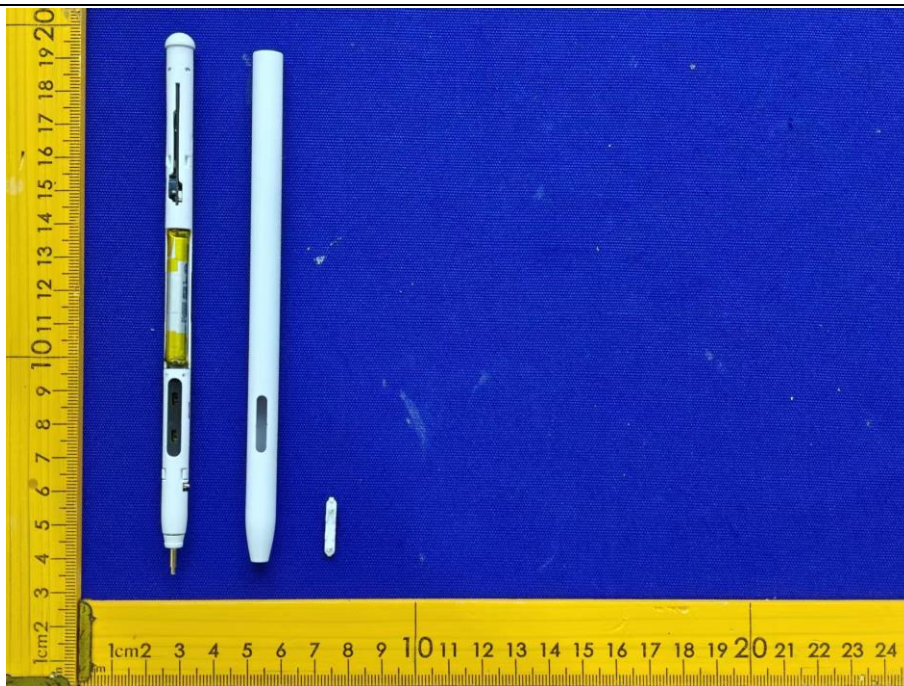


Photo 8

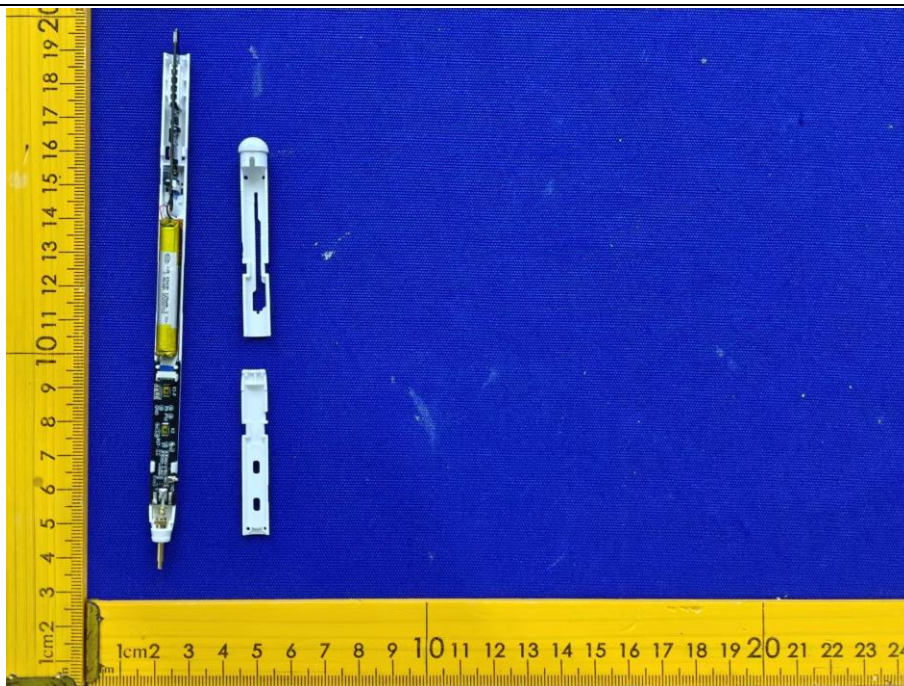


Photo 9



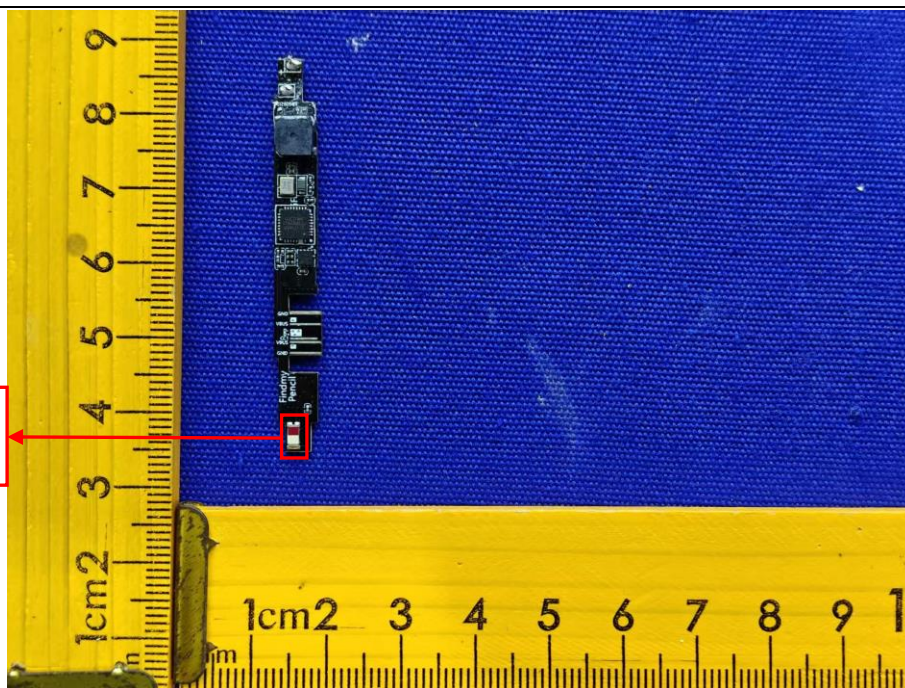
Photo 10



Photo 11



Photo 12



Chip
Antenna

Photo 13

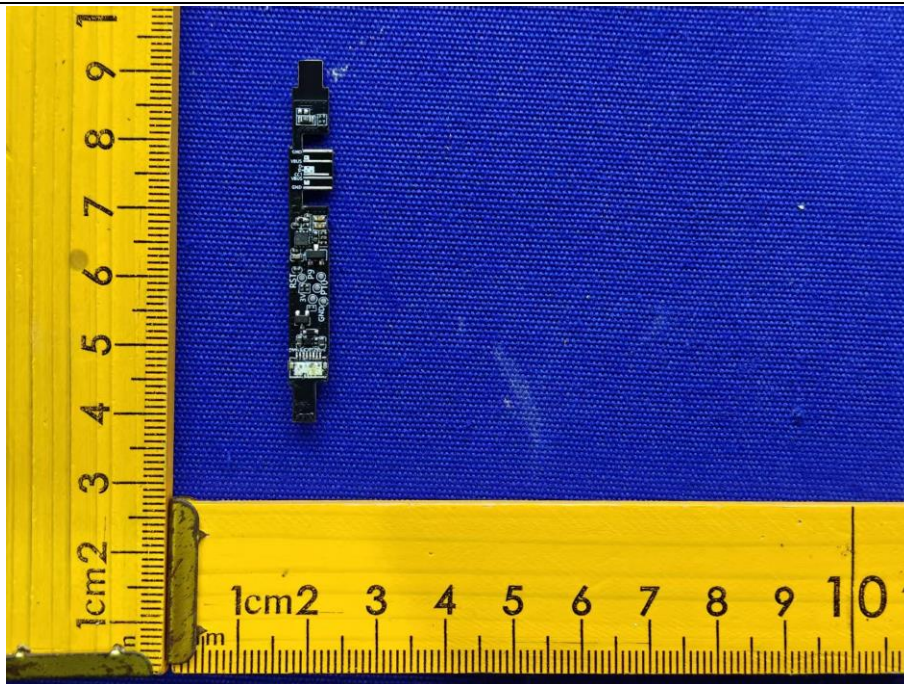


Photo 14

PCB
Antenna

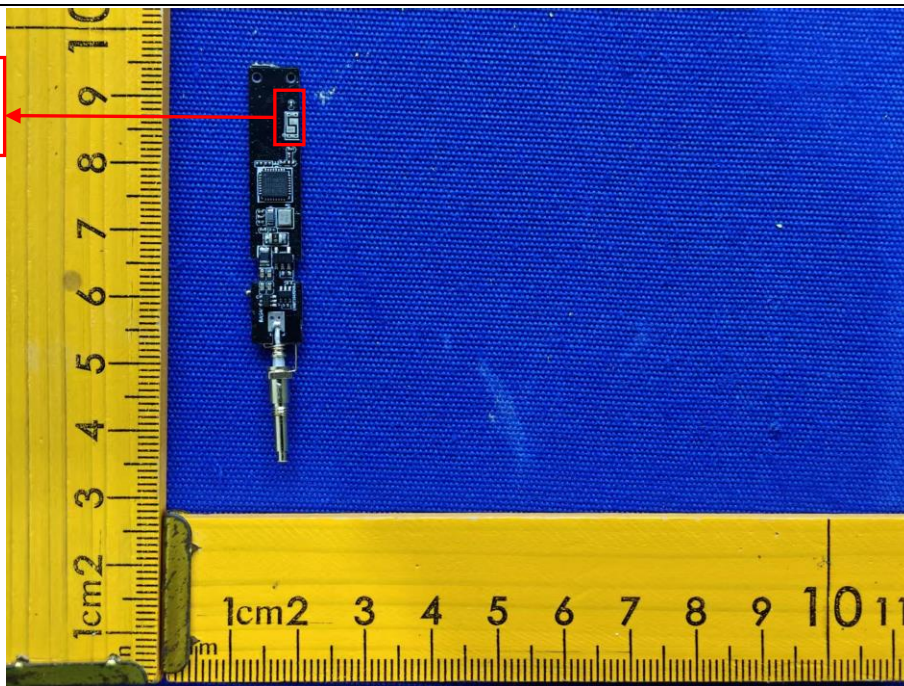
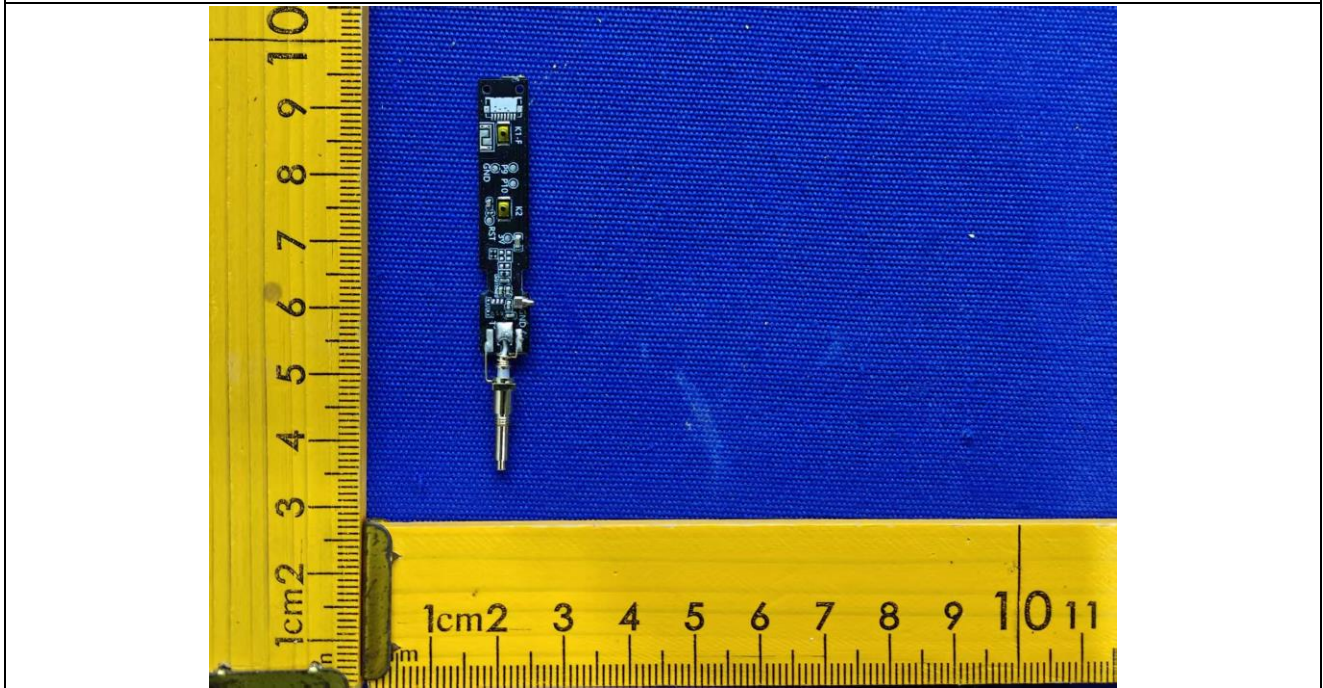


Photo 15



***** END OF REPORT *****