

# M Product Line

## Smart Deadbolt

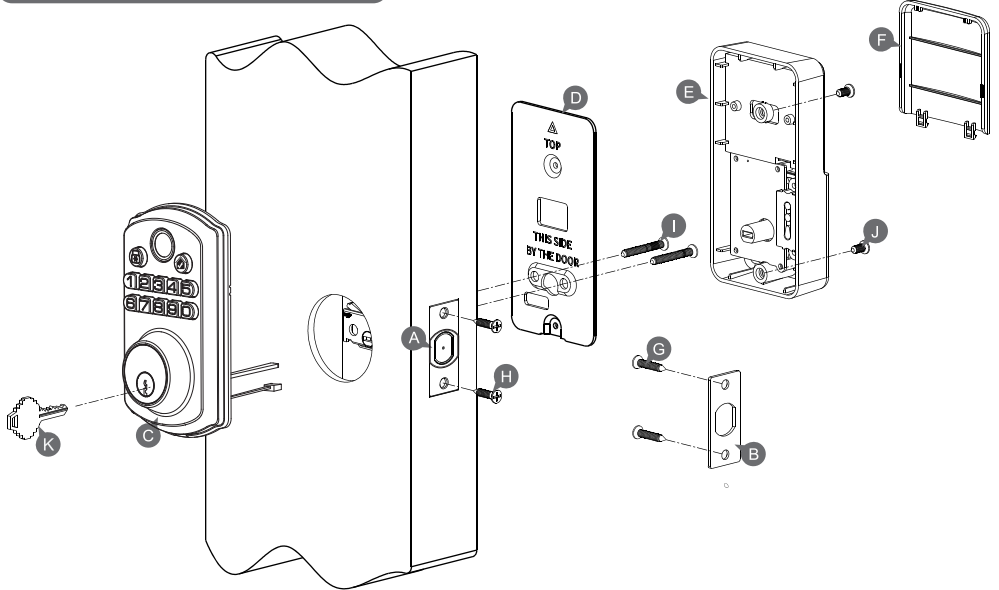
Installation Guide / Programming Instructions

Explanation:



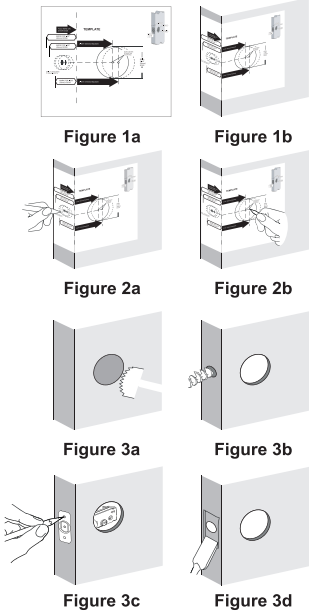
Thank you for purchasing our products. Please review this manual thoroughly before operating your device. All pictures in this manual are for illustration purpose only. Actual product may vary due to product upgrade.

### INSTALLATION OVERVIEW



### PREPARE DOOR AND JAMB

- 1. TEMPLATE**
  - Take out the hole template (Figure 1a).
  - Fold the template and place the marker on the door(Figure 1b).
- 2. MARK THE DOOR FOR DRILLING**
  - Mark center hole on door edge through guidance on template for 1" (25mm) latch bolt (Figure 2a).
  - Mark center hole on door face through guidance on template for 2-3/8" (60mm) or 2-3/4" (70mm) (Figure 2b) backset.
- 3. DRILL AND CHISEL DOOR**
  - Drill 2-1/8" (54mm) hole through door panel as marked for lock set (Figure 3a).
  - Drill 1" (25mm) hole in center of door edge for Deadbolt Latch Assembly (Figure 3b).
  - Insert Deadbolt Latch Assembly in hole keeping it parallel to face of door. Mark outline and remove latch (Figure 3c).
  - Chisel 5/32" (4mm) deep or until latch face is flush with door edge (Figure 3d).



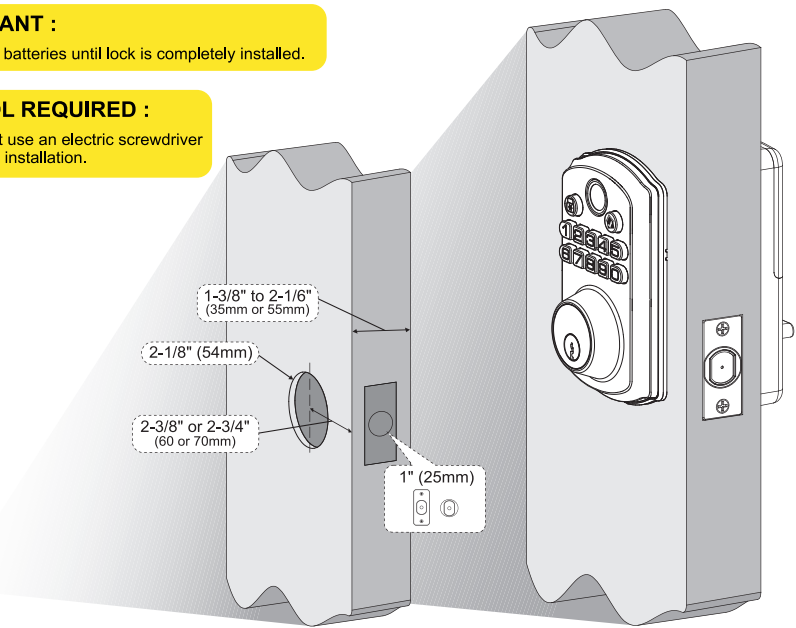
**NOTE:** For Drive in Latch, drill hole size indicated on template and press until it is flush with door edge.



**IMPORTANT :**  
Do not load batteries until lock is completely installed.



**TOOL REQUIRED :**  
Do not use an electric screwdriver during installation.

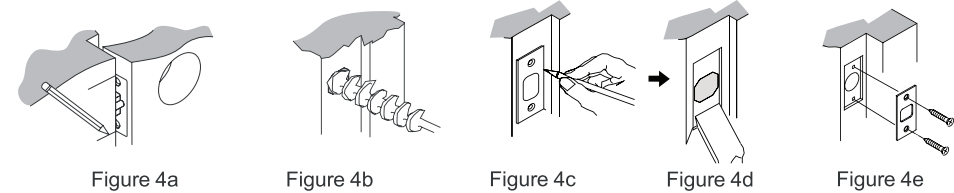


### Parts List

<b>A</b>  Latch x1	<b>B</b>  Strike x1	<b>C</b>  Exterior Assembly x1	<b>D</b>  Mounting Plate x1
<b>E</b>  Interior Assembly x1	<b>F</b>  Battery Cover x1	<b>G</b>  Strike Screws x2	<b>H</b>  Strike Screws x2
<b>I</b>  Mounting Plate Screws x2 (35mm<door thickness<55mm)	<b>J</b>  Interior Assembly Screws x2	<b>K</b>  Key x2	

### 4. MARK AND DRILL DOOR JAMB

- Mark center hole on edge of jamb even with the center of the Latch Bolt on door edge. (Figure 4a).
- Drill 1" (25mm) hole 1-3/16" (30mm) deep in door jamb on center mark (Figure 4b).
- Outline outside edges of Strike Plate (Figure 4c).
- Chisel 5/64" (2mm) deep for Strike Plate or until it is flushed (Figure 4d).
- Install Strike Plate using two 3/4" (19mm) screws provided (Figure 4e).



### Tools Required

Tools Required for Installation on undrilled Doors:  
Phillips Screwdriver (DO NOT USE POWER DRILL!)

## 1 Prepare the door and check dimensions

Measure to confirm that the hole in the door is 2-1/8" (54mm).

Measure to confirm that the hole in the door edge is 1" (25mm).

Measure to confirm that the backset is either 2-3/8" or 2-3/4" (60 or 70mm)

Measure to confirm that the door is 1-3/8" to 2-1/6" (35 mm or 55mm) thick.

Make sure the hole in door frame is drilled a minimum of 1" (25mm) deep.

## 2 Install the latch and strike

**A** Adjust the latch

Hold the latch in front of the door hole, with the latch face flush against the door edge. Is the slotted hole centered in the door hole?

No adjustment is required. Proceed to next step.

Slotted hole is NOT centered. Rotate and pull the latch as shown to extend latch.

**B** Install the latch

1. Insert the latch into the door hole. Push the latch into the door hole until it is flush with the door edge.

2. Tighten the latch screws (H).

**Yes**

**NO**

**C** Use a screwdriver to test if deadbolt works smoothly.

**D** Install strike on the door frame.

**IMPORTANT:** Make sure the hole in the door frame is drilled 1-3/16" (30mm) deep.

## 3 Install exterior assembly

**IMPORTANT:** Before installation, make sure the latch is fully retracted (in the unlocked position)

**Unlocked**

**Locked**

**A** With the latch fully retracted (in the unlocked position), route the cable below the latch.

**B** Secure the mounting plate with the supplied screws. Do not overtighten screws.

## 4 Install interior assembly

Push the battery cover out in the direction as illustrated.

**IMPORTANT:** Do not load batteries until lock is completely installed.

Insert the cable connector to the socket. Push the connector in firmly until it is completely attached.

Keep the thumb turn in vertical position and install the interior assembly.

**Note :** After installation, test whether the thumb turn rotates smoothly.

Attach Interior Assembly to Mounting Plate and tighten 2 Screws.

## 5 Detect left/right hand door installation

**A**

While the door is **OPEN** and **UNLOCKED**, load 4 or 8 AA LR6 1.5V batteries into the battery compartment.

**Note :** For long last, please use all new, non-rechargeable Alkaline batteries only.

**B**

Press button 4 times + Master Code +

Until you hear the sound of "beep". The latch bolt will extend to learn the orientation of the door automatically.

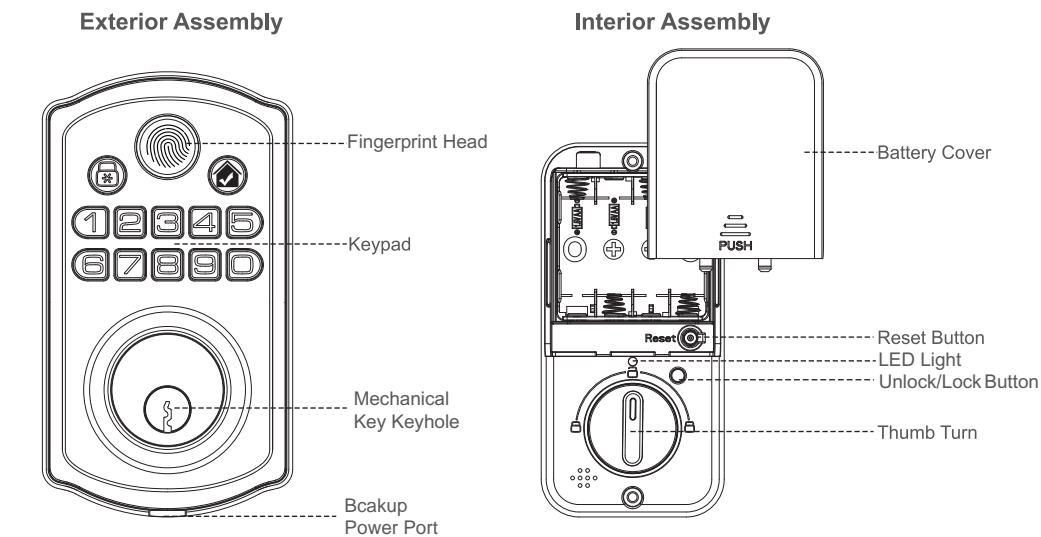
**C**

Until you hear the sound of "beep". The latch bolt will extend to learn the orientation of the door automatically.



PROGRAMMING INSTRUCTIONS

Overview



Definitions

- Master Code**  
Required for programming and feature settings. Master code can be used to unlock the door under vacation mode. The default master code 123456 needs to be changed before programming.
- Auto Lock**  
Automatically locks the deadbolt in select auto lock duration time after unlocking. This feature is off by default. You can customize the Auto Lock time delay support 8 types of time modes (5s/10s/20s/30s/40s/60s/80s/100s).
- Wrong Entry Limit**  
Within 5 minutes,After continuous10 times unsuccessful attempts at entering a invalid PIN code, the system will shut down for 90 seconds.

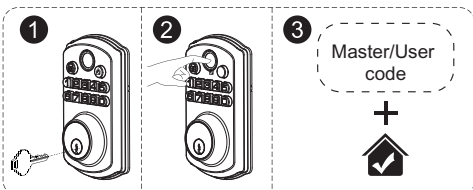
- Silent Mode**  
The beep sounds when pressing keypad can be muted. But you will still hear low battery and system alerts.
- Vacation Mode**  
This is a security feature for you when you are leaving your home for vacation or long trip. Enabling vacation mode will restrict all user codes until master code is entered on keypad. If the lock would be unlocked by the thumb turn from the inside, the lock will sound an alarm.
- One - Time User Code**  
This code only can be used once and will be automatically deleted after used.
- Unlock with Fake Code**  
User can prevent pin code exposure from strangers by entering random digits before or after pin code.



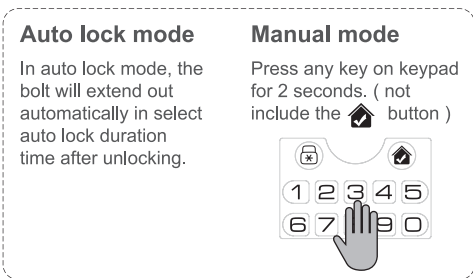
Programming Basic

How to Use

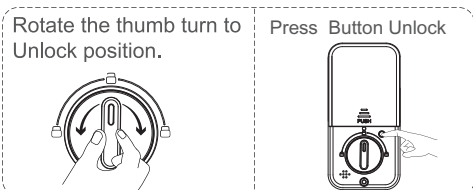
Unlock the door from outside



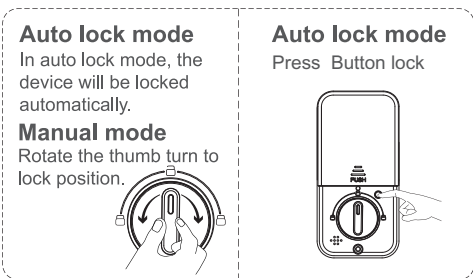
Lock the door from outside



Unlock the door from inside



Lock the door from inside



Code Format

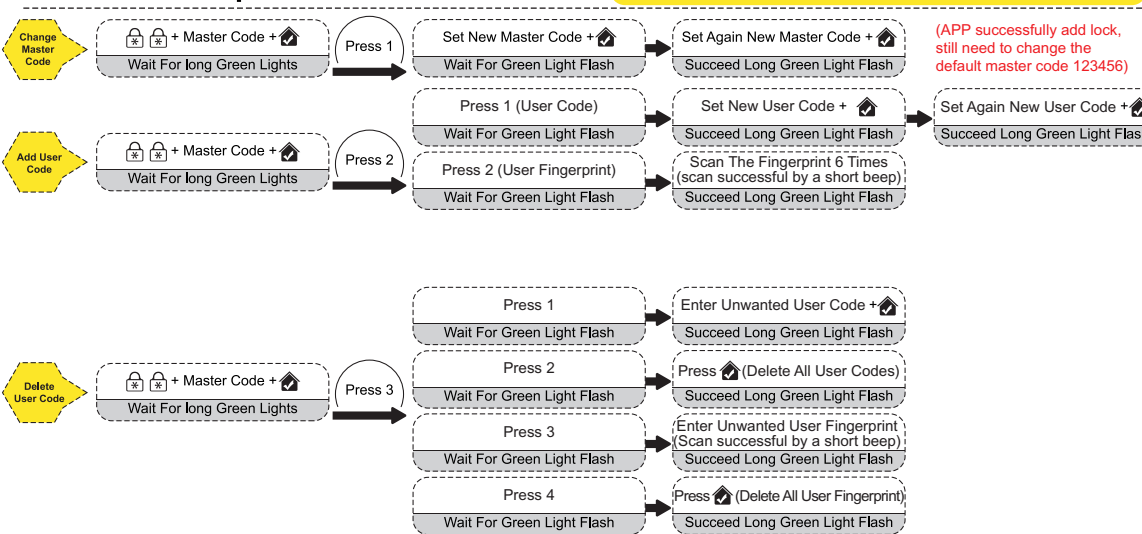
- Master Code,The default Master Code is **123456**. It is required that you change it to a new master code of your own before programming.
- Master and User and One-time Code, Three types of code support 4 to 10 digits.
- Master and User and One-time Code,Three types of code can be programmable and stored total 200 quantity.
- The following number combinations are supported and not supported by Master and User and One-time Code.

A	8								
B	3	6							
C	7	5	1						
D	8	1	1	2					
E	1	2	3	4	5	6	7	8	9
F	9	8	7	6	5	4	3	2	1
G	6	6	6	6	6	6	6	6	6

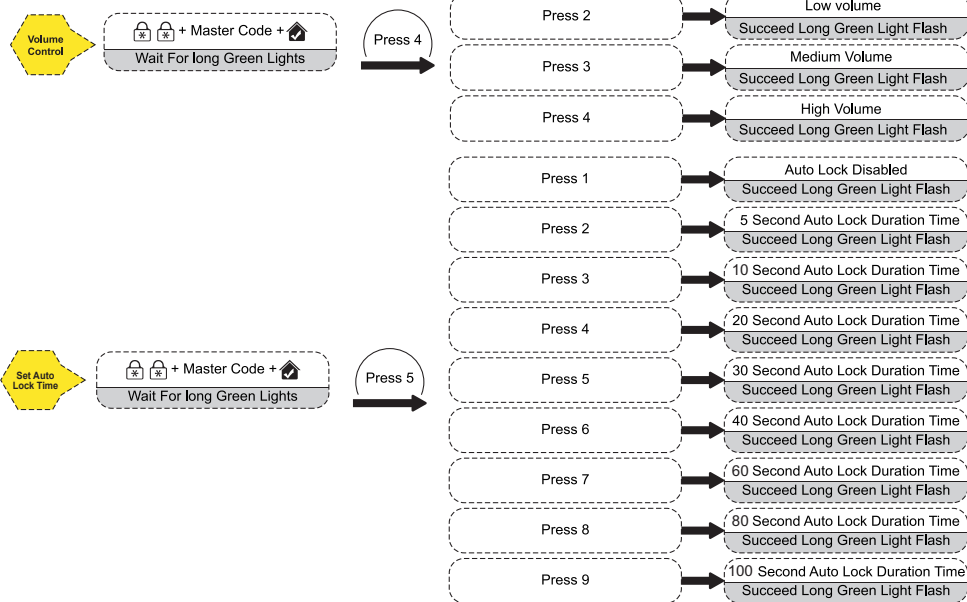
- ✗ Code set 1 digit
- ✗ Code set 2 digits
- ✗ Code set 3 digits
- ✓ Code set 4-10 digits
- ✓ Forward number sequence
- ✓ Backward number sequence
- ✓ Repeat number sequence

Quick Set Up 1

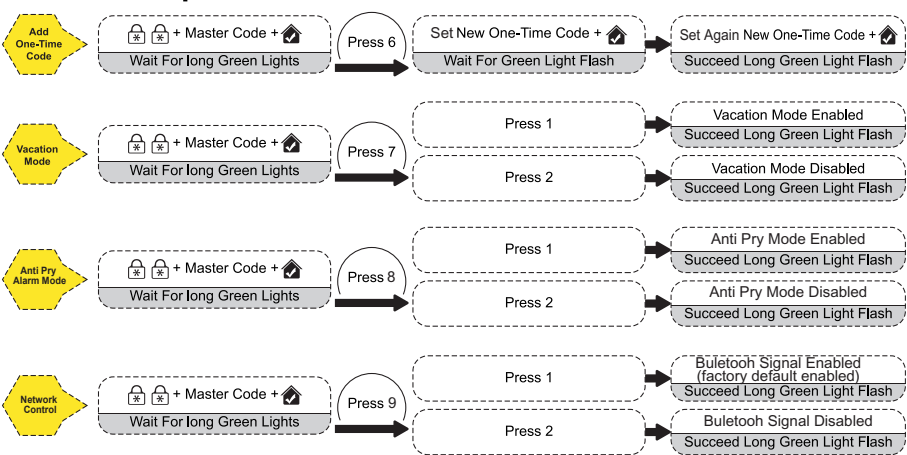
 **IMPORTANT:**  
The default Master Code is 123456. It is required that you change it to a code of your own before programming.



Quick Set Up 2



Quick Set Up 3

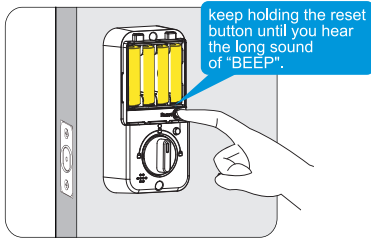


Factory Default Settings

How to Reset?

- Step 1:** Keep the door open and unlocked.
- Step 2:** Press and hold the Reset button,Keep holding the Reset button for 4 seconds.
- Step 3:** Until you hear the long sound of "BEEP" Flashes long green light 1 time,reset successfully.

 **IMPORTANT:**  
The resetting will delete all User Codes stored in the lock.



Settings	Factory Default
Master Code	123456
Auto Lock	Disabled
Silent Mode	Disabled
Wrong Entry Limit	10 times
System Lock Time	90 seconds
Vacation Mode	Disabled

Secure Lock-out Period

Within 5 minutes,Warning sounds and LED flashes red after 10 incorrect code attempts: System shuts down for 90 seconds.

Operation Indicator Sounds and Lights

Sounds	Lights	Meaning
2 beeps	Flashes green light once	Successful unlock
2 beeps	Flashes red light once	Successful lock
4 beeps	Flashes red light 4 times	Code input error alarm once
First: 4 rapid beeps(touch any key during system shuts down 90 seconds) Second: 1 long beep (the system is unfrozen at the same time)	First:Flashes red rapid light lasts for 90 seconds; Second: Flashes long green light	Within 5 minutes,Code consecutive input error 10 times,system shuts down for 90 seconds
10 long beeps	Flashes long red 10 times	Low battery power alarm
10 long beeps	Flashes long red 10 times	Rotate the thumb turn to unlock position in Vacation mode enabled
10 beeps interval of 200 milliseconds	Flashes red light 10 times	The motor is blocked rotation by external force stuck, alarm prompt.for example,the latch bolt hindered. (the system tries to correct errors 3 times)
4 rapid beeps	Flashes red light 4 times	Operation error alarm
29 beeps + 1 long beep	Flashes red light 29 times Flashes long green light 1 time	Anti Prying Alarm (Select configuration support)

Troubleshooting—Installation

Issues	Solution
While the door is locked, you hear the latch bolt coming out when you press the gatehouse to lock the door;however, 2 beeps are emitted.conversely, while the door is open,no beeps are emitted when locking the latch bolt.	<ul style="list-style-type: none"><li>Make sure the depth of the latch bolt hole is sufficient.Dig the latch bolt hole used for the strike a little deeper. The minimum depth is 1" (2.5 cm).</li><li>Make sure the latch bolt is aimed at the opening of the strike.Adjust the strike to the appropriate position.</li></ul>
Fail to set up the lock.	<ul style="list-style-type: none"><li>Please make sure the lock is installed correctly</li><li>Please install fresh batteries and make sure the cable is connected correctly.</li><li>After installation, reset the lock to complete the bolt direction setting.</li></ul>
You have installed the deadbolt and batteries,but you still get no response when you press any button.	<ul style="list-style-type: none"><li>Please check to see if the battery polarities have been reversed or if the battery is dead. If so, reinstall or change the battery.</li><li>Please check to see if the cable is properly connected.</li></ul>

Troubleshooting—Operation

Issues	Solution
Although the electronic deadbolt has been functioning normally, the latch bolt suddenly locks up, and the turn piece inside can't be rotated, not even with a key.	<ul style="list-style-type: none"><li>Check if the deadbolt latch is stuck due to a warped door or misaligned door.If so,first, take out one battery, then press any button on the front panel for electric discharge, and put the battery back in. The latch bolt will automatically re-detect its position.Note: If the latch gets stuck frequently, please check and fix the alignment of the deadbolt latch and strike plate.</li></ul>

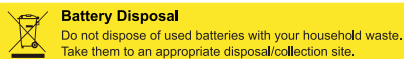
Low battery alarm,you hear 10 long beeps and you see 10 times flashes long red light.	<ul style="list-style-type: none"><li>The batteries are getting low, please replace with four new batteries for flashing, the best performance(alkaline batteries only).</li></ul>
The Keypad not responding or the keypad work improperly.No backlight and no beeping sound alarm.	<ul style="list-style-type: none"><li>Make sure the batteries are installed properly.</li><li>The batteries are getting low if the battery indicator keeps flashing Please replace with four new batteries for the best performance(alkaline batteries only).</li><li>Make sure the cable is well-connected to the port and was not damaged during installation.</li><li>Please make sure the lock has been set up and complete the bolt direction determination.</li></ul>
Master Code can not be changed.	<ul style="list-style-type: none"><li>Please refer to Programming Instructions to restore factory settings and reprogram all codes.</li></ul>
I forgot my Master Codes.	<ul style="list-style-type: none"><li>Perform a reset in order to erase all pass codes.Once the reset is complete, all pass codes will be erased and the Master code will return to the default master code123456.</li></ul>
Can not add a new User Code.	<ul style="list-style-type: none"><li>Make sure the whole code entering process is completed within 10 seconds, otherwise the unit will time out.</li><li>Make sure the Master Code has been entered correctly.</li><li>The new User Code will not be accepted when the capacity is full.Try to delete any or some existing User Codes and then add new one again. A User Code must be at least 4 to10 digits.</li></ul>
Deadbolt is unable to reset.	<ul style="list-style-type: none"><li>Please refer to Programming Instructions to restore factory settings and reprogram all codes.</li><li>The battery is low if the battery indicator light keeps flashing. Please replace with four new batteries.</li></ul>
How to operate the deadbolt in darkness?	<ul style="list-style-type: none"><li>Press any button to activate the Deadbolt back light.</li></ul>

If the deadbolt appears to be damaged or does not operate properly, please contact customer service for further assistance.

I cannot remove my key unless it is in the locked position.	<ul style="list-style-type: none"><li>Uninstall the interior and exterior assemblies Before re-installation, please follow these guidelines:Refer to Installation Instructions 1 Make sure the bolt is in the retracted position. 2 Do not have any key in the lock cylinder during installation. 3 Make sure the lock cylinder turn tail piece is inserted horizontally.</li></ul>
---	---

Information & Safety Warnings

- Protect your User Codes and Master Code.
- Restrict access to your lock's interior assembly and routinely check your settings to ensure they have not been altered without your knowledge.
- Do not use an electric screwdriver during installation.
- This manufacturer advises that no lock can provide complete security by itself.
- This lock may be defeated by forcible or technical means, or evaded by entry elsewhere on the property.
- No lock can substitute for caution, awareness of your environment, and common sense.
- The temperature range of the lock is between -14°F to 129°F(-10°C to 55°C)
- Care should be taken to ensure a long-lasting finish. When cleaning is required use a soft, damp cloth. Using lacquer thinner, caustic soaps, abrasive cleaners or polishes could damage the coating and result in tarnishing.
- The lock meets IP54 water-resistance. It can withstand water splashes; however, do not let water and liquids get into the lock.
- Avoid exposure to direct sunlight. Long-term exposure to direct sunlight may damage the lock.



# TUYA APP Operation Guide (Bluetooth)

**IMPORTANT: TUYA APP successfully add lock, still need to enter main menu programming to change the default master code 123456.**

**1-1.** Scan the below QR code to download the Tuya Smart APP, or search “Smart Life” in the APP Store(iOS) or Google Play(Android) to install the APP.

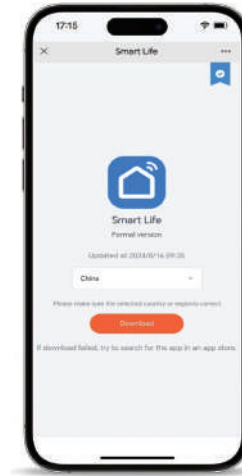
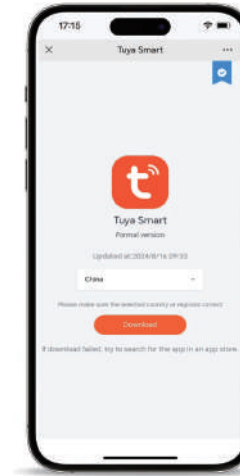


"Tuya APP" is a smart device management app provided by Tuya for end consumers. You can easily configure and control the smart products of the whole house through the "Tuya APP", configure your favorite scenes and automation solutions, and share your smart devices with your family and friends, so as to enjoy the fun of smart products in the whole house.

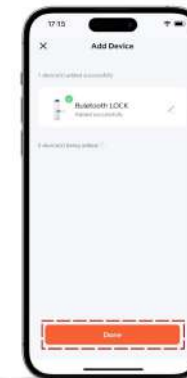
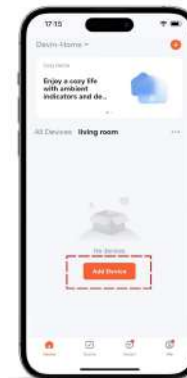
**2-1.** Open the phone's Mobile data, Bluetooth and Location, and open the Tuya App. Log in with an account, Register without an account.



**1-2.** Download the Tuya Smart or Smart Life App from the Mobile App Market.



**2-2.** Add Device(Auto Add LOCK),Go to the Main Interface.



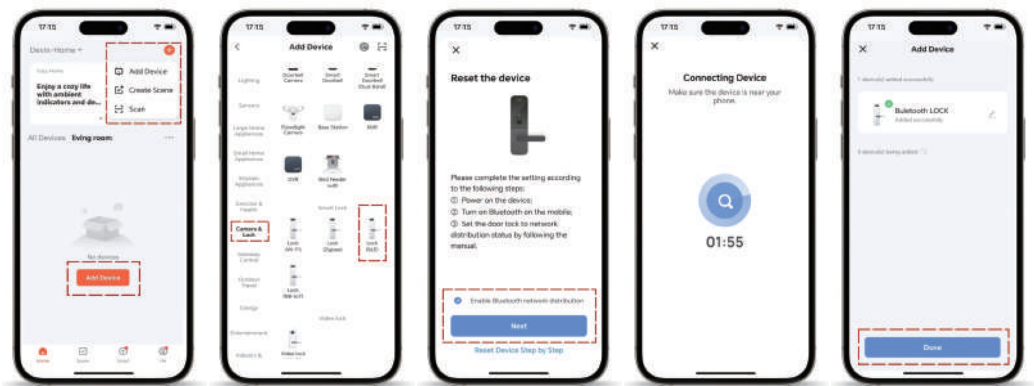
Two Ways  
Click"Add Device"

Auto  
Searching

Click"Lock was  
searched"and  
start connecting

Click"Done"

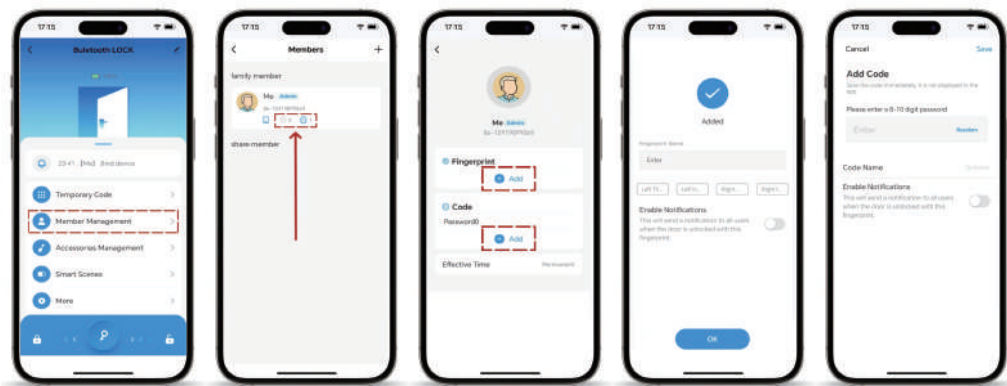
2-3. Add Device(Manually Add LOCK),Go to the Main Interface.



Two Ways  
Click"**Add Device**"  
First  
Click"**Camera&Lock**"  
Second  
Click"**Lock BLE**"

Click"**Done**"

3-1. Enter the Lock homepage to add Code and Fingerprint.



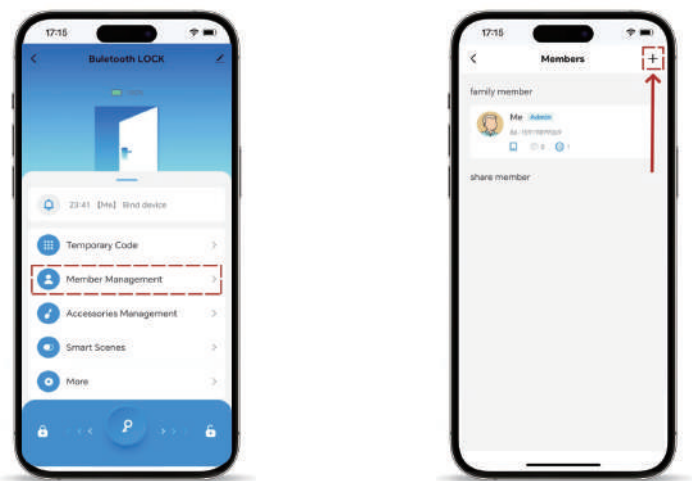
Click "**Member Management**"

Select **Add Fingerprint / Code**

Add **Fingerprint**

Add **Code**

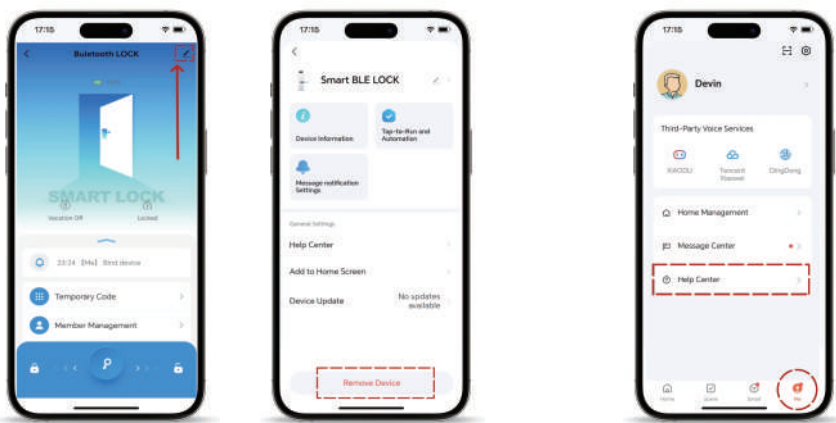
3-2. Enter the Lock homepage to add Member.



Click  
"**Member Management**"

Click  
"**Top right corner of screen**"

4-1. Remove the device and Help Center.



Remove The Device

See the **Help Center** for any questions about use

## FCC

This device complies with part 15 of the FCC Rules. Operation is subject to the following two conditions: (1) This device may not cause harmful interference, and (2) this device must accept any interference received, including interference that may cause undesired operation.

Any Changes or modifications not expressly approved by the party responsible for compliance could void the user's authority to operate the equipment.

**Note:** This equipment has been tested and found to comply with the limits for a Class B digital device, pursuant to part 15 of the FCC Rules. These limits are designed to provide reasonable protection against harmful interference in a residential installation. This equipment generates uses and can radiate radio frequency energy and, if not installed and used in accordance with the instructions, may cause harmful interference to radio communications. However, there is no guarantee that interference will not occur in a particular installation. If this equipment does cause harmful interference to radio or television reception, which can be determined by turning the equipment off and on, the user is encouraged to try to correct the interference by one or more of the following measures:

- Reorient or relocate the receiving antenna.
  - Increase the separation between the equipment and receiver.
  - Connect the equipment into an outlet on a circuit different from that to which the receiver is connected.
  - Consult the dealer or an experienced radio/TV technician for help.
- FCC Radiation Exposure statement

The device has been evaluated to meet general RF exposure requirement. The device can be used in portable exposure condition without restriction.