



(YET) SC3604A-4K

Manual for remote control

1、Output mode of remote control

The remote control is powered by a CR1233V battery and encoded by the EV1527 chip. After the user presses the key, the K1 K2 chip recognizes the key and sends out the corresponding coded modulation signal, the 315M wireless signal is produced by OOK modulation, and then radiated by RF integrated chip CMT2110 and 3DBI gain antenna. Wiring as shown in Figure A:

2、Main technical indicators

- 1、Operating voltage: DC3V
- 2、Static working current: $\leq 0\mu A$
- 3、Operating temperature: $-20^{\circ}C - +80^{\circ}C$
- 4、Firing Range: More than 60 meters
- 5、Transmission frequency: 315MHz
- 6、Press the button outside the remote control: Two buttons
7. K1 and K2 are two coding buttons, and only when these two buttons are pressed will the remote control emit an RF signal;
8. Product Usage: Electronic products mainly used for wireless remote control, such as cars, access control, etc

3、Wiring diagram

Figure A

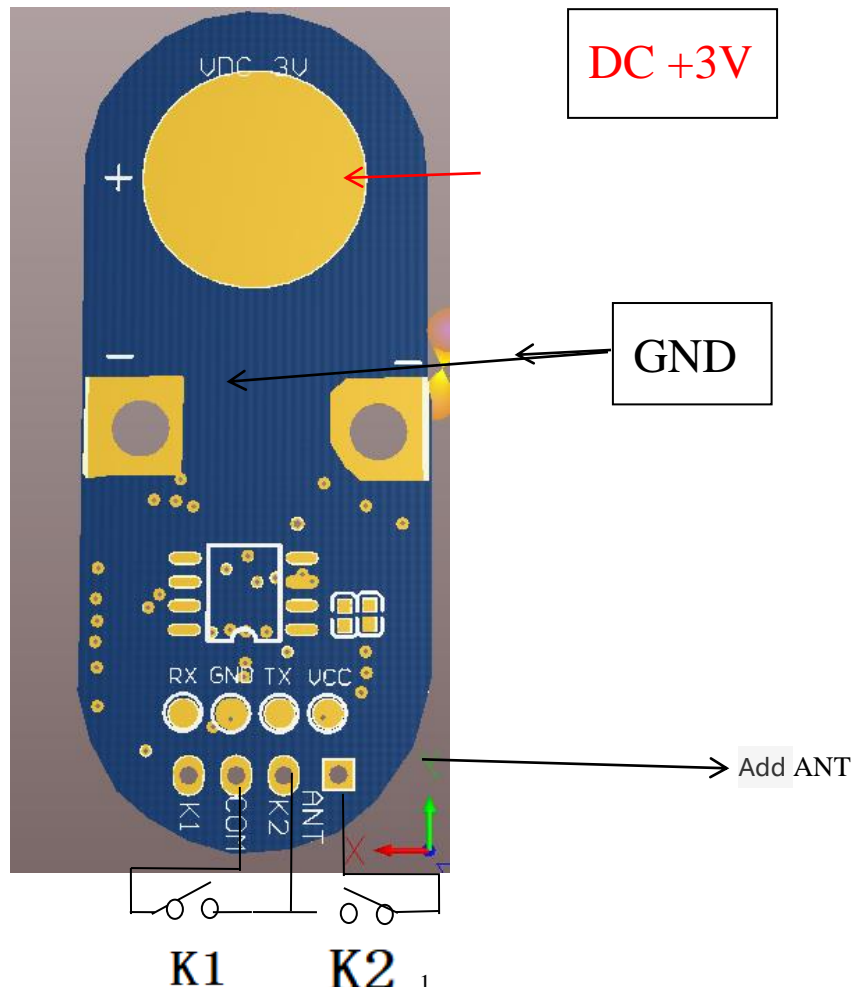
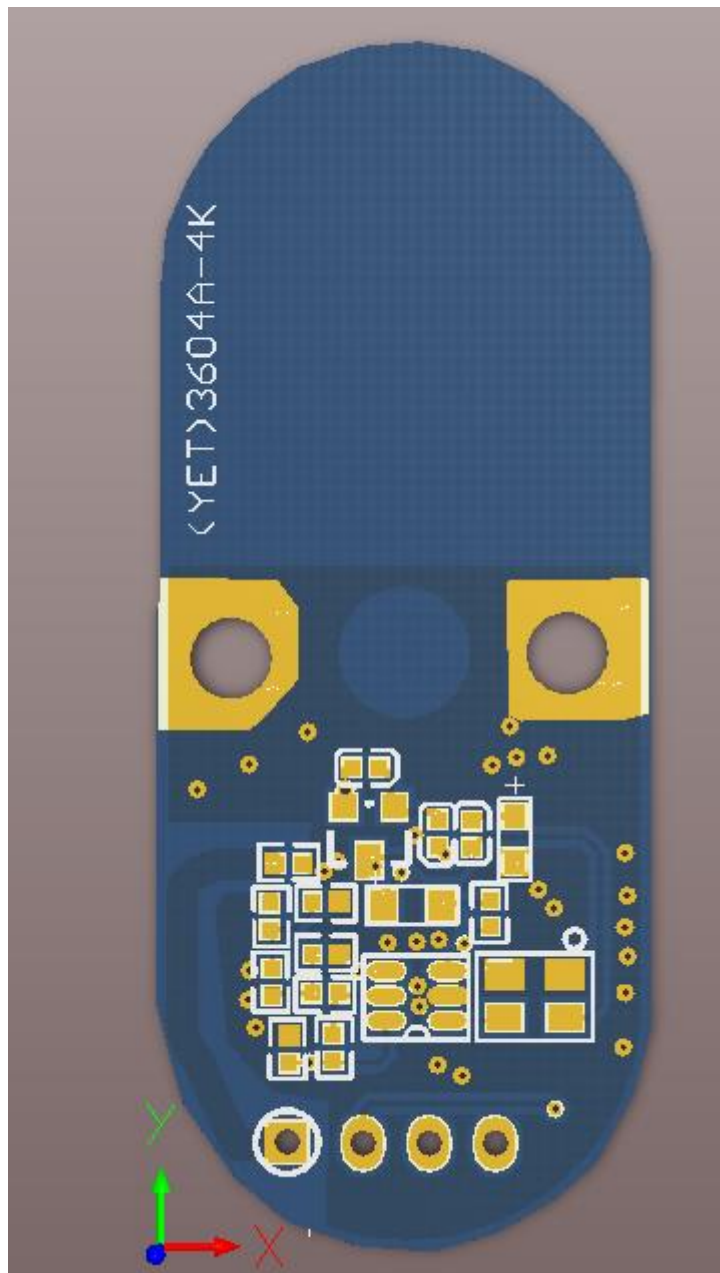




Figure B



FCC Warning:

This equipment has been tested and found to comply with the limits for a Class B digital device, pursuant to part 15 of the FCC Rules. These limits are designed to provide reasonable protection against harmful interference in a residential installation. This equipment generates, uses and can radiate radio frequency energy and, if not installed and used in accordance with the instructions, may cause harmful interference to radio communications.

However, there is no guarantee that interference will not occur in a particular installation. If this equipment does cause harmful interference to radio or television reception, which can be determined by turning the equipment off and on, the user is encouraged to try to correct the interference by one or more of the following measures:

- Reorient or relocate the receiving antenna.
- Increase the separation between the equipment and receiver.
- Connect the equipment into an outlet on a circuit different from that to which the receiver is connected.
- Consult the dealer or an experienced radio/TV technician for help.

Caution: Any changes or modifications to this device not explicitly approved by manufacturer could void your authority to operate this equipment.

This device complies with part 15 of the FCC Rules. Operation is subject to the following two conditions: (1) This device may not cause harmful interference, and (2) this device must accept any interference received, including interference that may cause undesired operation.

The device has been evaluated to meet general RF exposure requirement. The device can be used in portable exposure condition without restriction.