

Product: OPENFIT AIR

Type Designation: T511



Figure 7: Internal view of charging case



Figure 8: Internal view of charging case

Product: OPENFIT AIR
Type Designation: T511

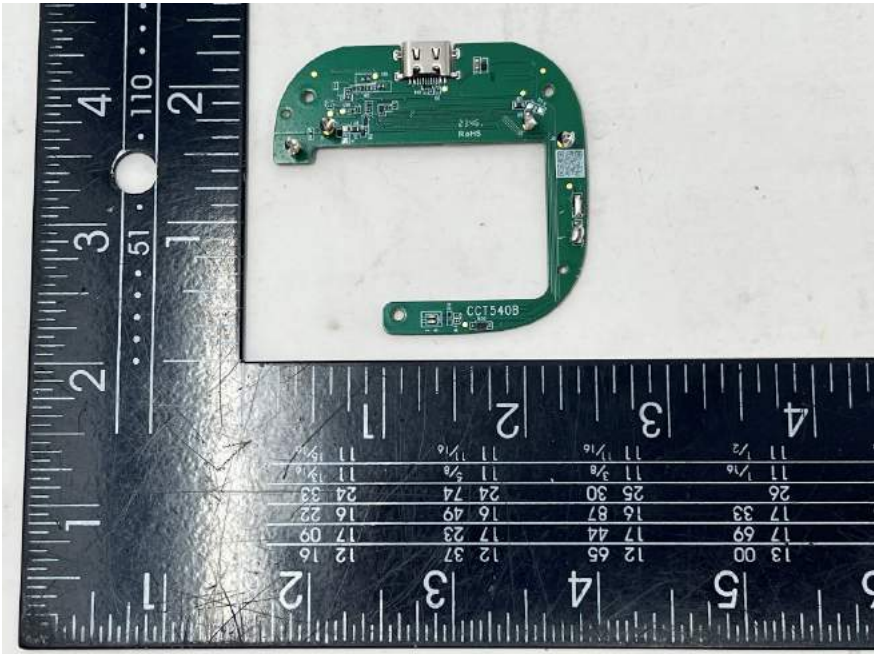


Figure 9: PCB top view of charging case

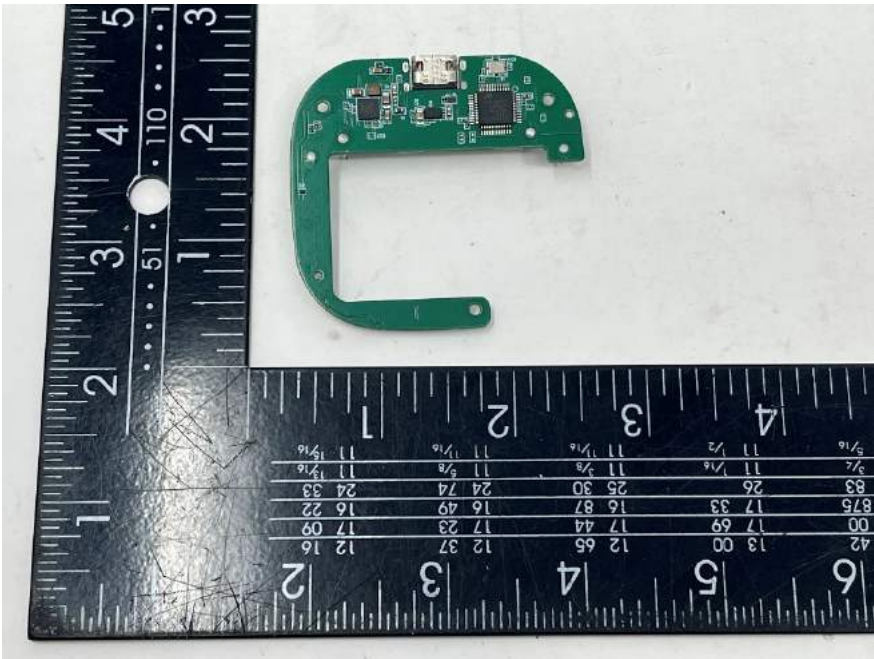
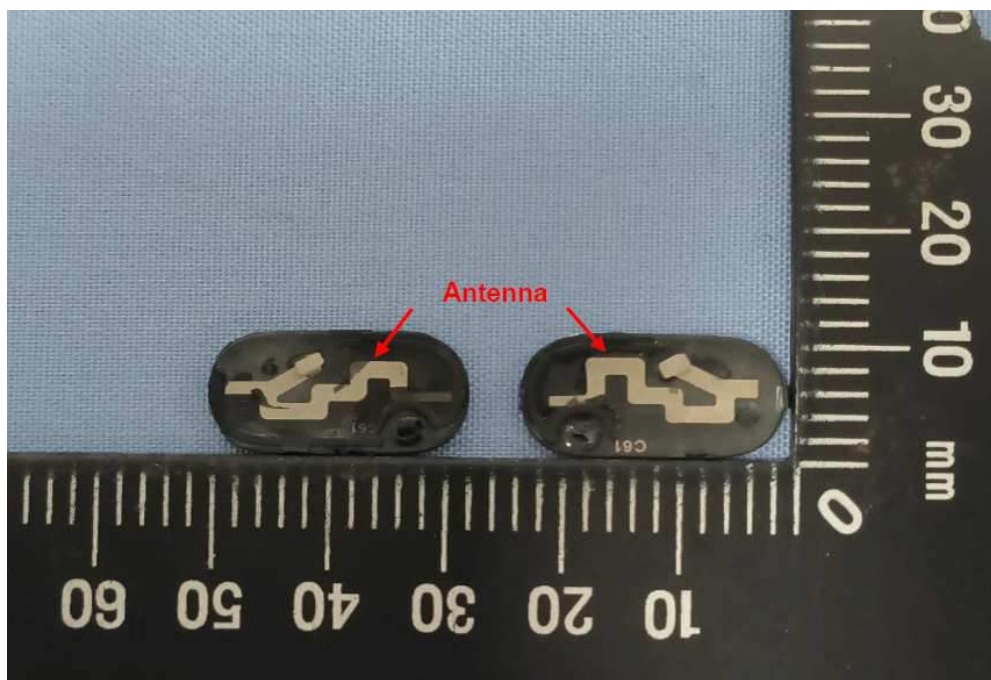
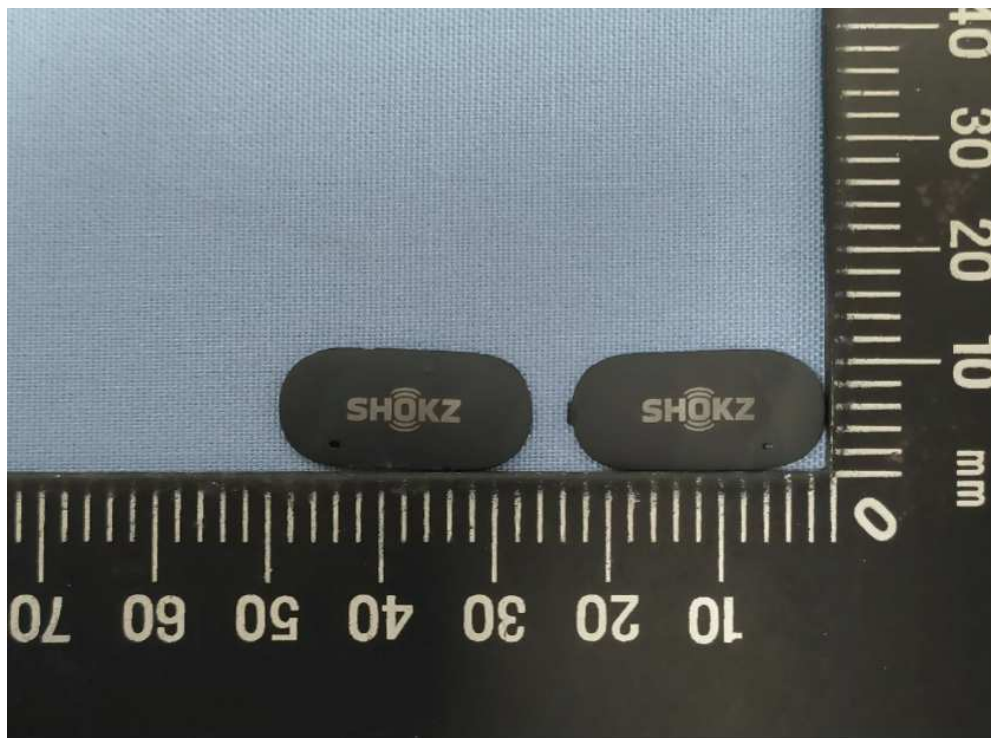


Figure 10: PCB bottom view of charging case

Product: OPENFIT AIR

Type Designation: T511



Product: OPENFIT AIR

Type Designation: T511



Figure 11: Internal view of earbuds

Product: OPENFIT AIR

Type Designation: T511

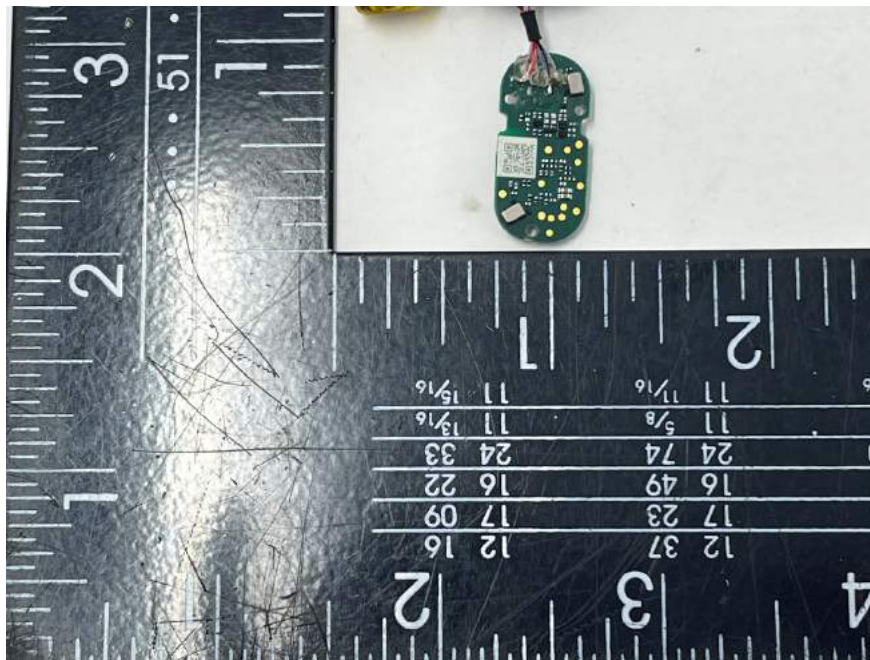


Figure 12: PCB view 1 of left earbud

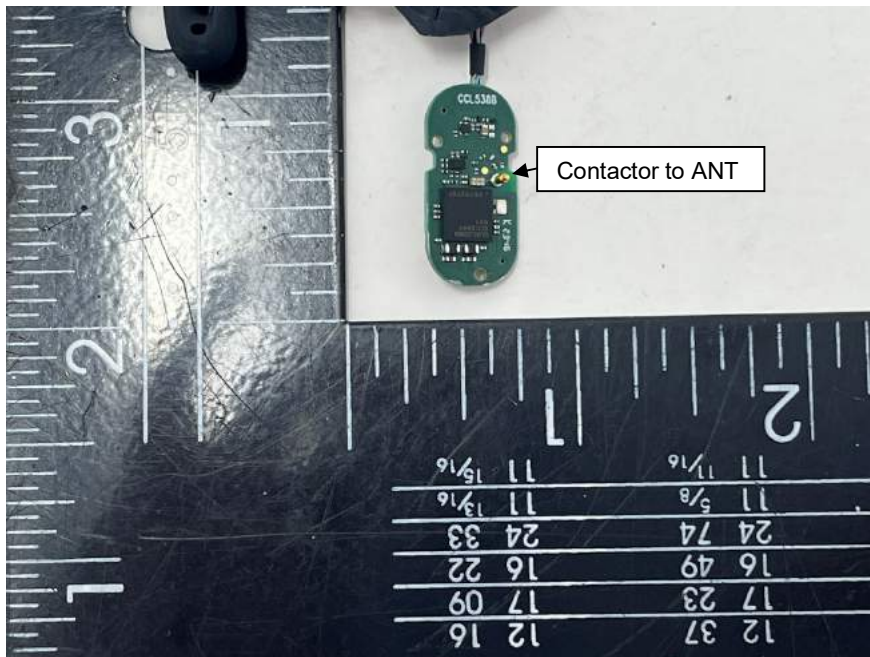


Figure 13: PCB view 2 of left earbud

Product: OPENFIT AIR

Type Designation: T511

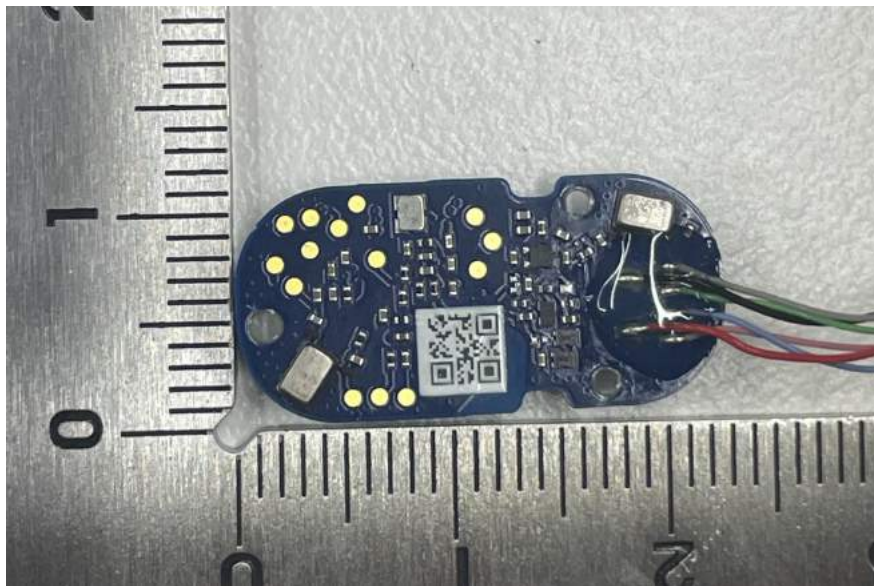


Figure 14: PCB view 1 of right earbud

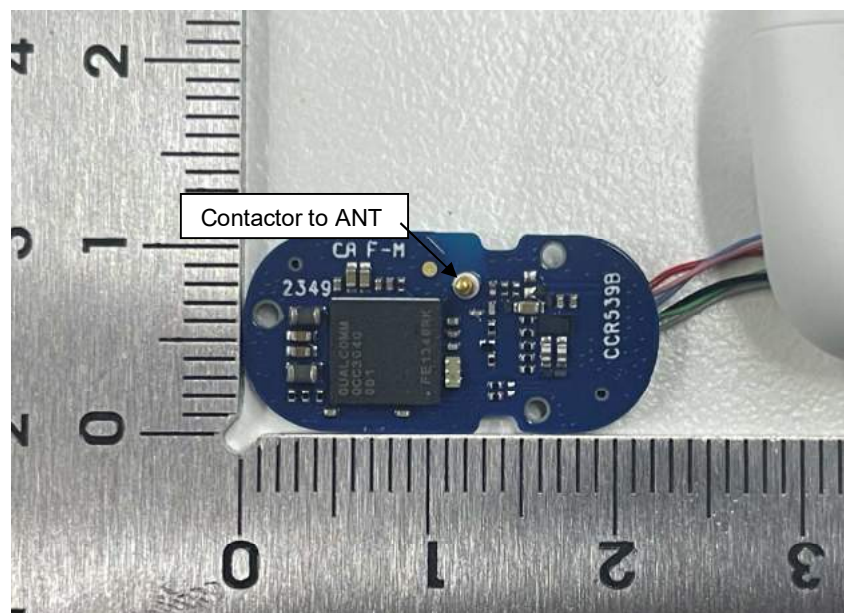


Figure 15: PCB view 2 of right earbud

Type Designation: T511



Figure 16: Battery view of charging case



Figure 17: Battery view of charging case

Product: OPENFIT AIR

Type Designation: T511



Figure 18: Protective board of charging case battery

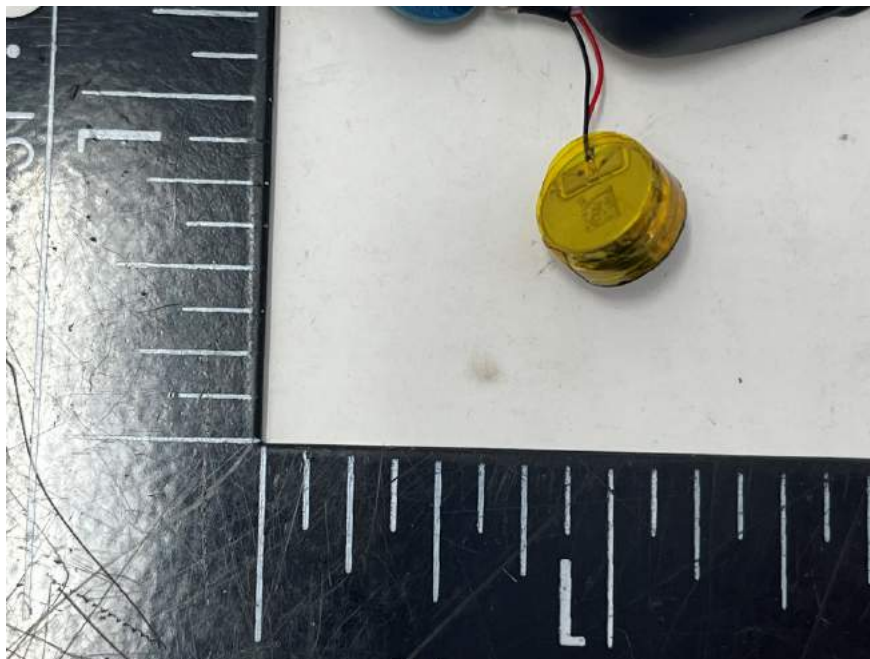


Figure 19: Battery view of earbuds