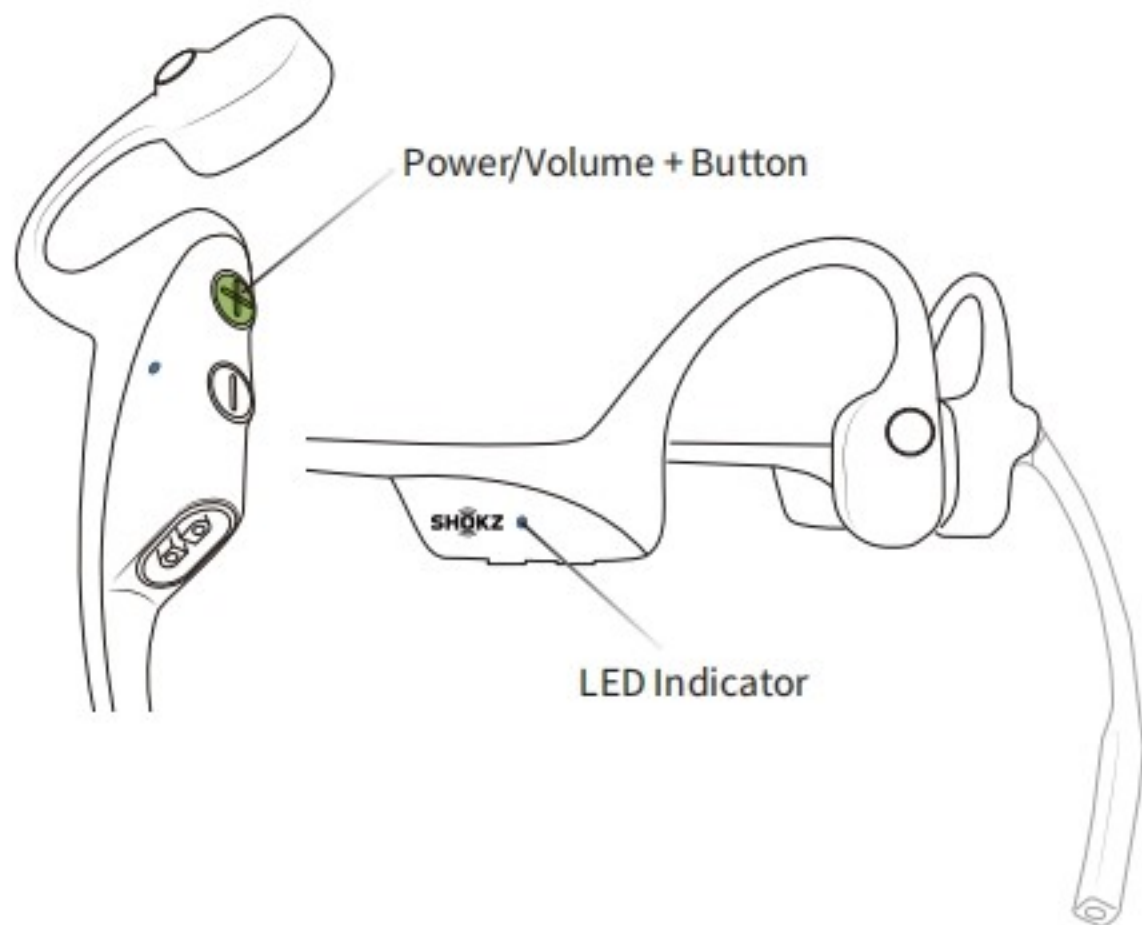


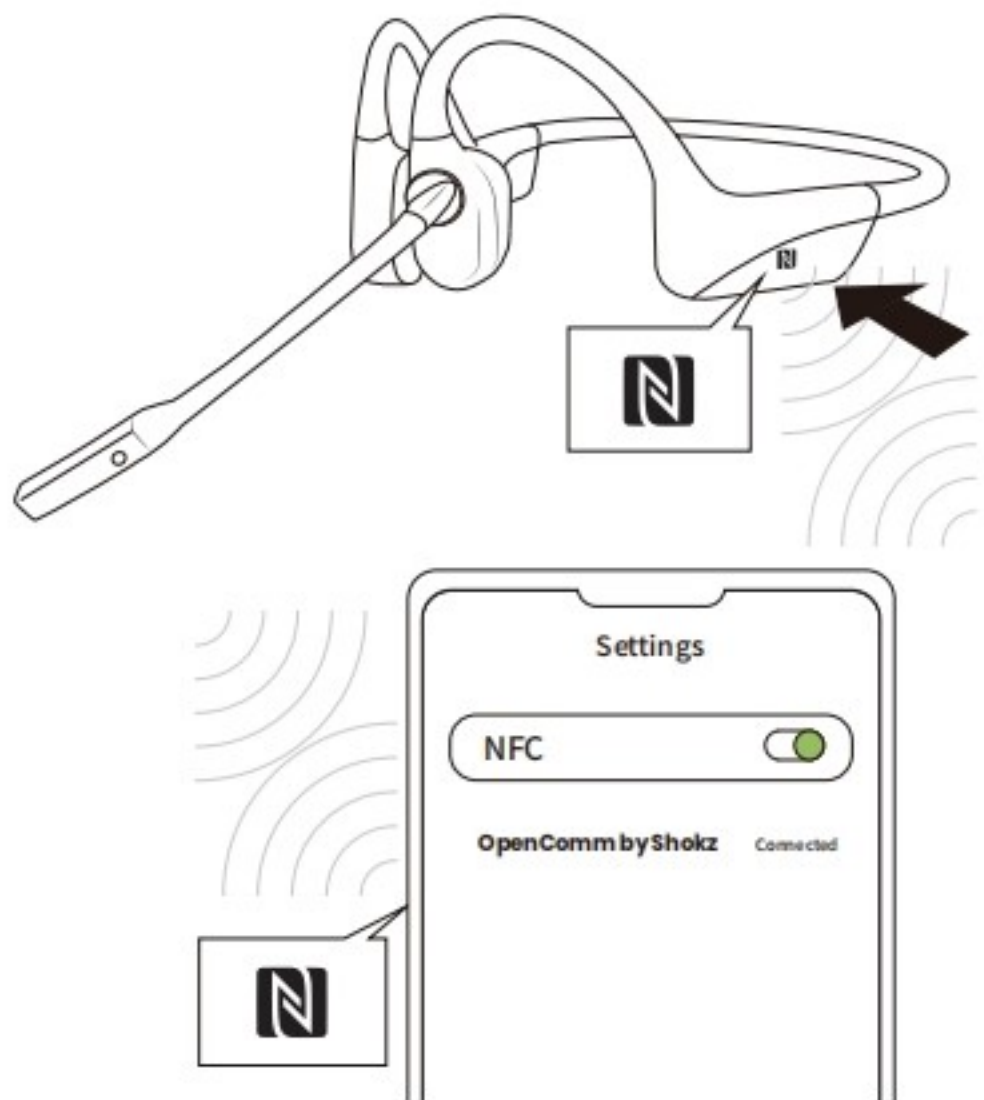
NFC Pairing



Operate controls with
headset powered off.



1. Power on your headset (press and hold Power/Volume+ until
LED Indicator flashes blue)



2. Unlock your phone and turn on NFC pairing (Refer to your phone's user guide if needed).
3. Position the headset's NFC logo near the NFC detection area of your phone until the device shows pairing is completed. The headset's LED Indicator will flash blue once when pairing is successful.