

# **JASMINER X16-Q**

## **High-Throughput Quiet Server User Manual**

# JASMINER X16-Q high throughput quiet server instructions

## I. Product introduction

High-throughput quiet server (model: JASMINER X16-Q) coming from Sunlune Technology development (Beijing) Co., Ltd., which is a high cost performance server. Based on independent development of JASMINER X16 high-throughput computing ASIC. The integrated memory and computing structure chip realizes the combination of memory and computing, to meet the memory capacity requirements, and Increased access bandwidth, break through the bottleneck of computing power from the traditional computer architecture, With the provision of sufficient computing power, reduced energy consumption and profile, designed with silent fan, With the help of an integrated architecture and ultra-high throughput, widely applicable to blockchain networks PoW algorithms such as ETCHASH and ETHASH, With standard 3U server shape, it is suitable for IDC server room, household and other scenarios, and brings good ROI to customers.

High-throughput quiet server has excellent computing performance, low power consumption, simple but efficient IO expansion ability and extremely high operating stability to meet the requirements of all different types of customers.



JASMINER X16-Q High-Throughput Quiet Server

## II. Check before use

### 1. Check before use

- After unpacking the new machine, please check whether the equipment shell is deformed or the interface is damaged. If there is any damage, please contact the after-sales service for treatment.

- Check the machine for any strange noise, please do not turn on the power and contact the after-sales service if there any metal-to-metal collision sound, screws off or loose.

## 2. Note on use

- This machine should not connect to any router or switch with POE function;
- Do not stack the machine or cover other objects to keep it cool;
- Please operate the machine in the recommended operating environment (operating temperature: 0-40°C, operating humidity: 5%RH~95%RH non-condensing), so as not to affect the normal operation or performance of the machine;
- Note that the dust and foreign objects, so as not to corrode the motherboard to cause the device can not work properly;
- Please do not modify the machine privately, the resulting damage to the machine is not covered by the warranty.

### III. Basic instructions


#### 1. Equipment



#### Caution:

Please place the machine according to the placement shown above,  
do not place the machine in a confined space for operation;  
For your safety, it is forbidden to disassemble any screws or fasteners  
on the product;  
This machine generates heat during operation, please avoid touching  
the case during operation.

## 2. specification of equipment

General Information	
Appearance	
Size	443mm (H) ×410mm (L) ×132.5mm (W)
Weight	10 kg
Technical Specifications	
Processor	JASMINER X16-Q
Memory	8 GB
Algorithm	ETCHASH/ETHASH
Network connections	RJ 45 Ethernet 10 / 100 / 1000M& 802.11b / g / n 2.4GHz WiFi
Port	TF card port, power port, RJ 45 network cable interface
Power	120-240V, 50 / 60Hz, 10 A, 1200 W ± 10%, with a built-in power supply
Cooling style	Fans
Operating system	Linux
Function	With the characteristics of the memory and computing integrated architecture and ultra-high throughput, it widely applied to the PoW of the blockchain network which using ETCHASH or ETHASH algorithms. Remote control through the network interface can provide high throughput computing services without access to traditional peripheral devices (such as mouse, keyboard, display, etc.).
Environmental Specification	
Working temperature	0-40°C
Working humidity	5% RH-95% RH
Work altitude	Below 2000 meters

### 3. Interface and description



TF card	The TF card slot
IP Report	Using IP Report software, the high-throughput server IP will be feedback to computer
ETH	Network cable interface
Reset	Restore the factory setting button
Fault Light(red)	The blinking indicates that a fault has occurred
Operation Light (green)	The flashing light indicates that the machine is working properly
WiFi antenna	Wireless Network Antenna

## IV. Use & Setup

### 1. Wiring & inspection

A) Network cable connection: insert the RJ 45 crystal head into the Ethernet port (shown as ETH on machine back) , pay attention to the direction when plugging the cable, and please insert the crystal head in place;

B) Power cable connection: Please connect the 120V-240V AC power supply to operate correctly;

C) WiFi link: Please link the WiFi antenna to the corresponding interface of the machine.

### 2. Configure the machine

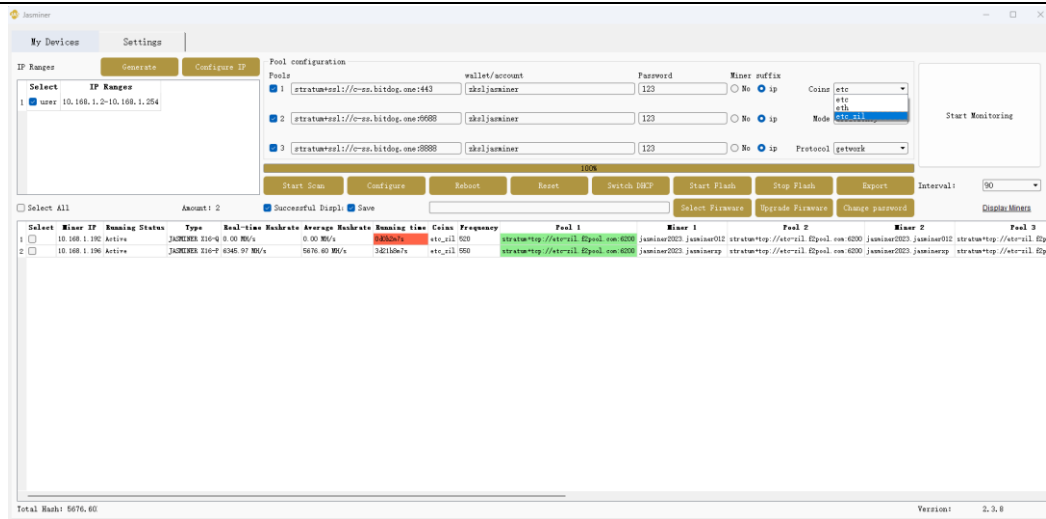
Configure the machine by JASMINER IP group control software

Download the IP group control management software from following path:

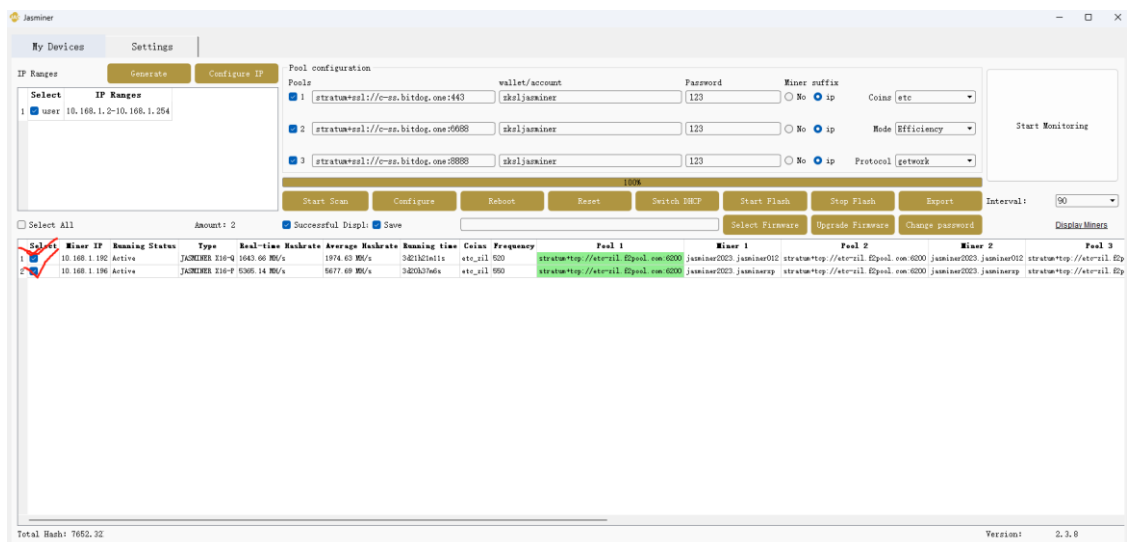
JASMINER website→support→Installation→guide & firmware→other  
→software & firmware

Install the jasminer program (IP group control management software) on Windows OS, double-click to run, and note that the computer needs to be in the same network segment with the machine;

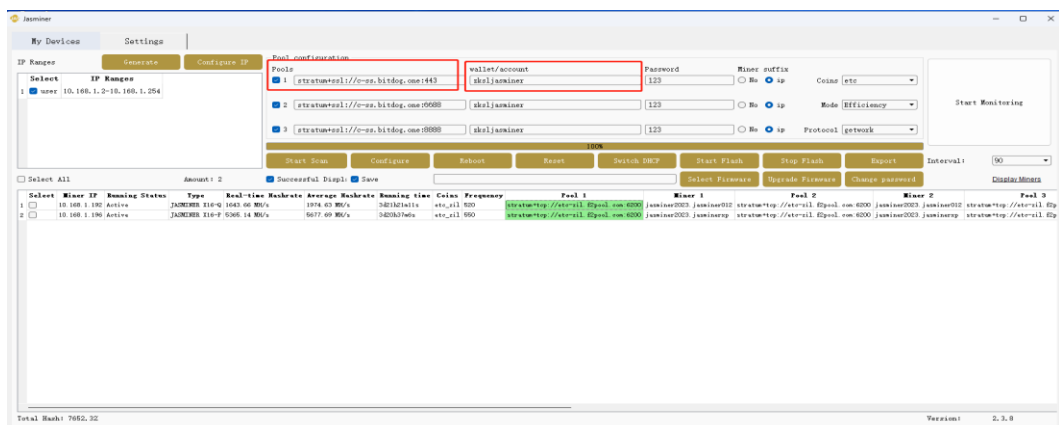
After successful installation, see the figure below, click "generate" → "scan" in the software interface to scan machine's IP, the the relevant information will automatically pop up after scanning is complete;



- Check the machine needs to be configured

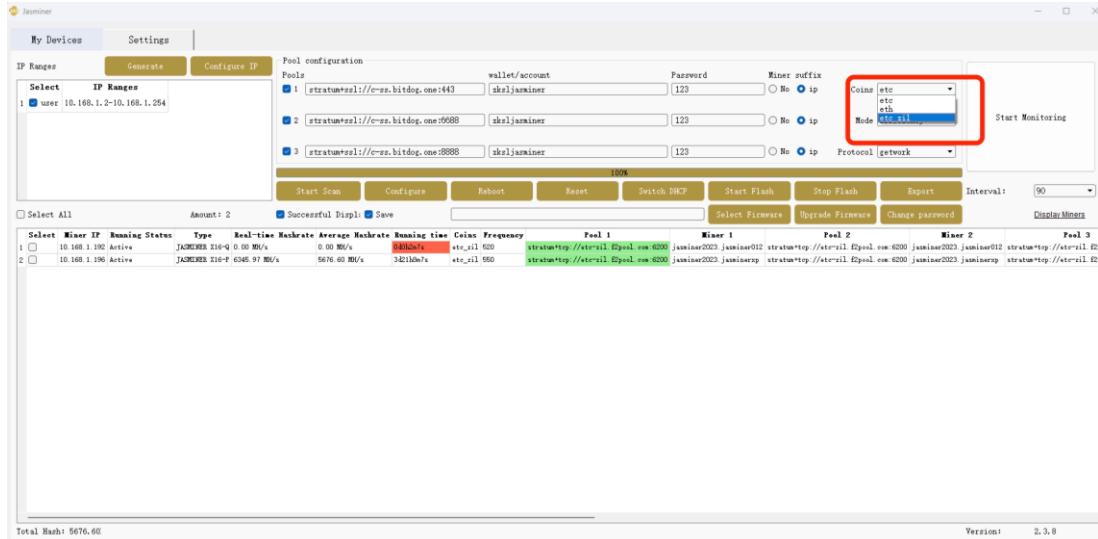


- Copy and paste the obtained mining pool address at the Pools, and then copy and paste the sub-account (worker) at the wallet / account (if you choose ETC + ZIL dual-mining, please get the dual-mining address from your mining pool)

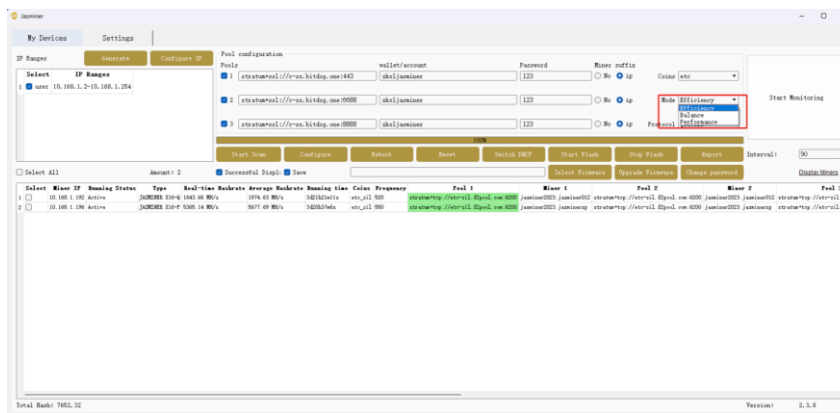




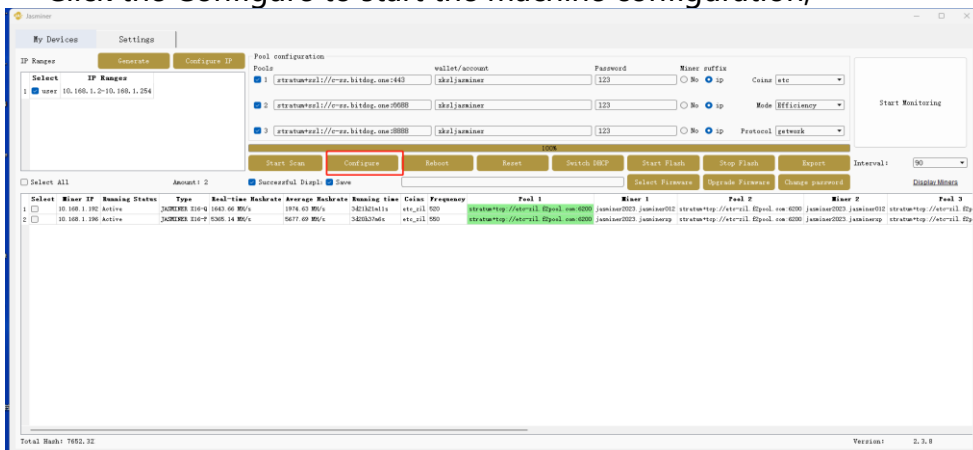
- Single mining ETC, select ETC algorithm, dual-mining select ETC + ZIL dual-mining (note that previous address and algorithm selection should be the same);



- Select the working frequency, the default is Efficiency (500MHz), also available Balance (520MHz) or Performance (550MHz);

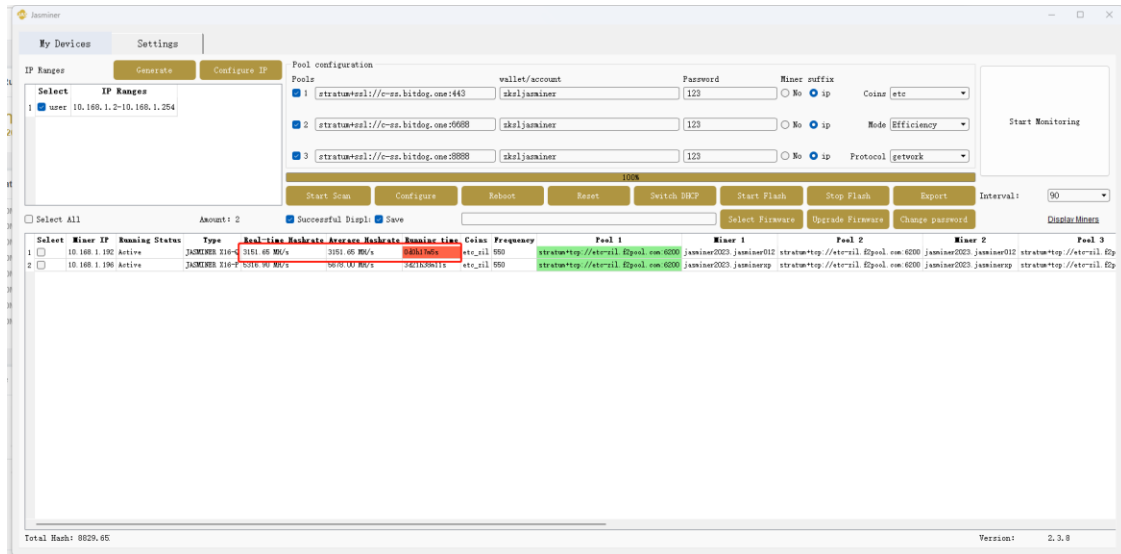


- Click the Configure to start the machine configuration;

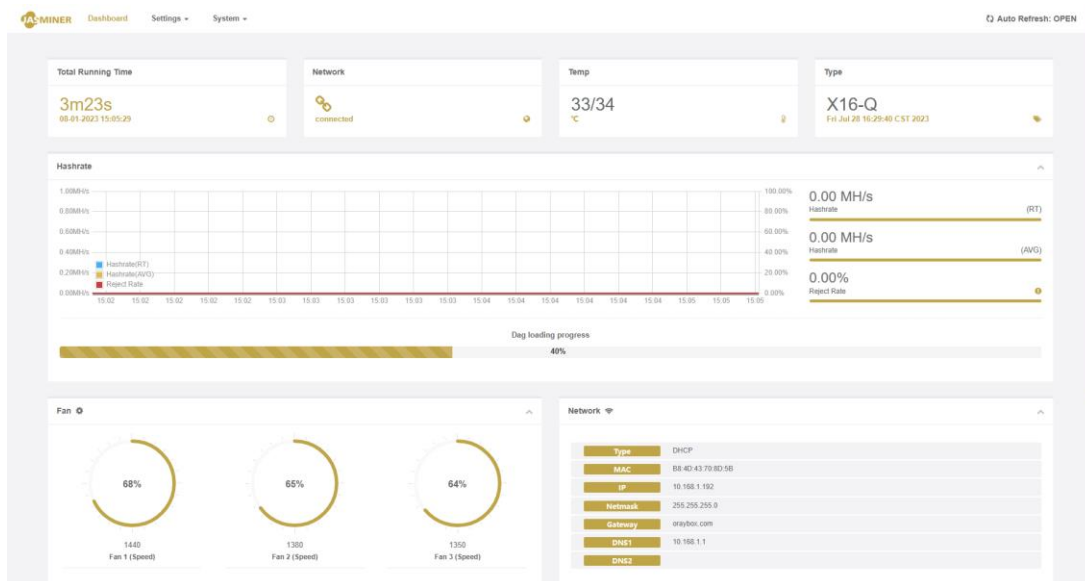


- View the hashrate

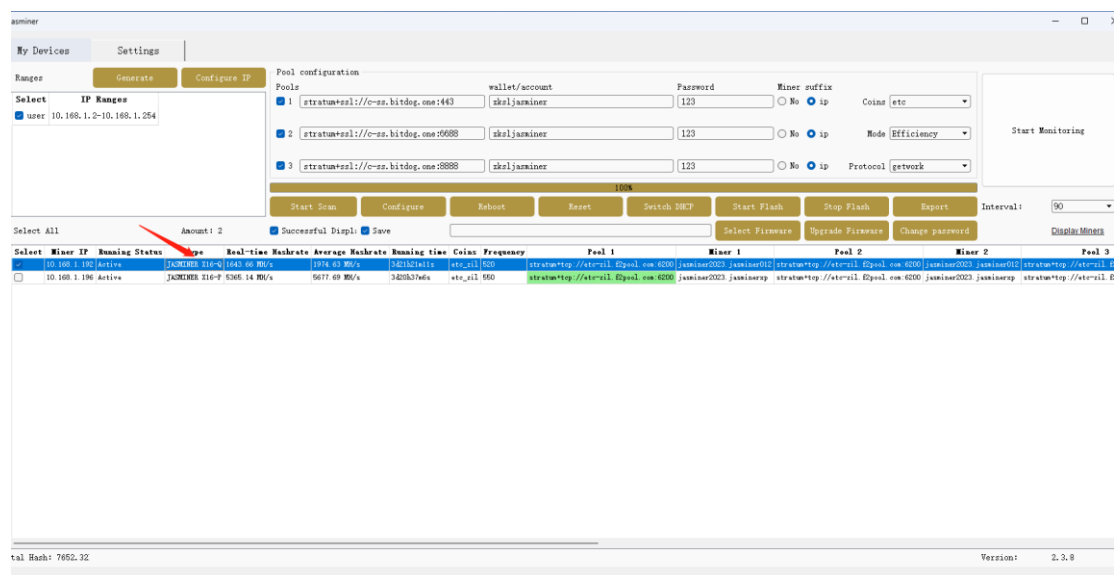
After the machine runs about 10 min, you can see the corresponding hashrate information.



The configuration to this high-throughput server is complete and the machine works properly.



3. Other Settings: double-click the device in the group control software to enter the web page to modify and set up



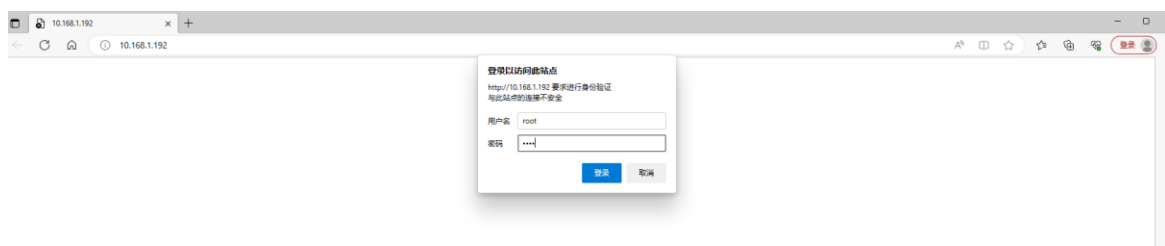
\* You have set all the parameters by now, if you want to know more about setting, you can continue reading items 4 and 5.

#### 4. Configure the high-throughput server from the Backend Console without group control software

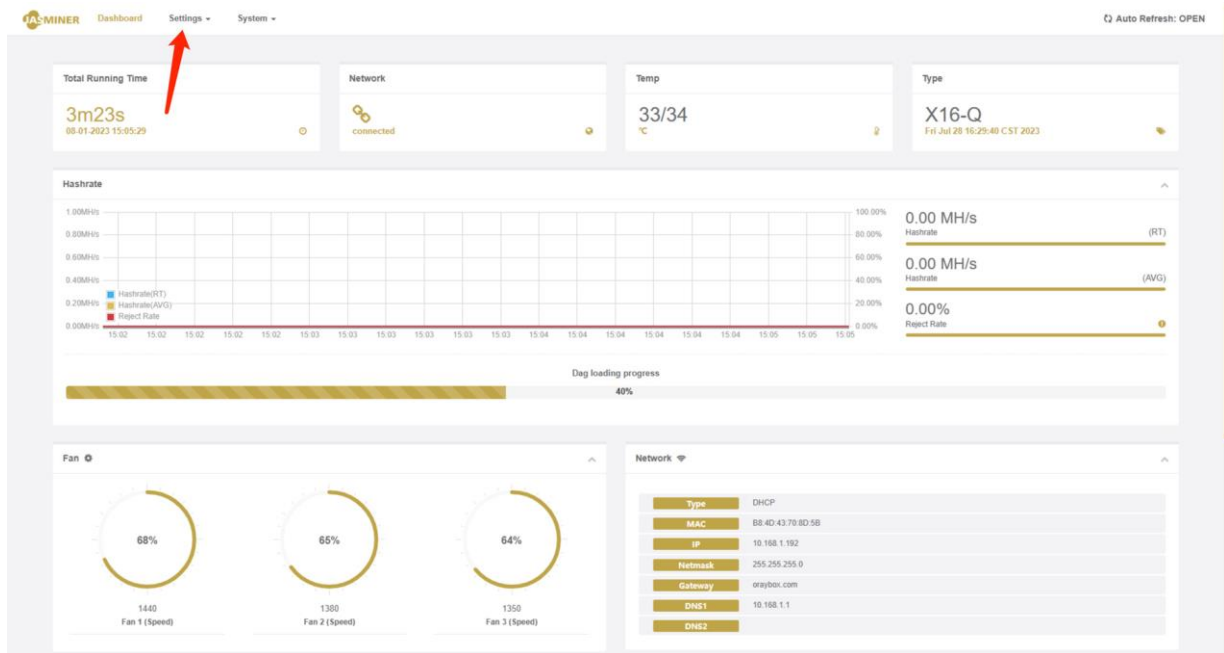
- a) Enter the IP address of the machine in any web browser and press the Enter key to open the machine's Backend Console.

User name: root

Password: root



- b) Enter the "Setings→Miner" configuration interface to modify the mining pool settings, and let the machine starts to providing hashrate.

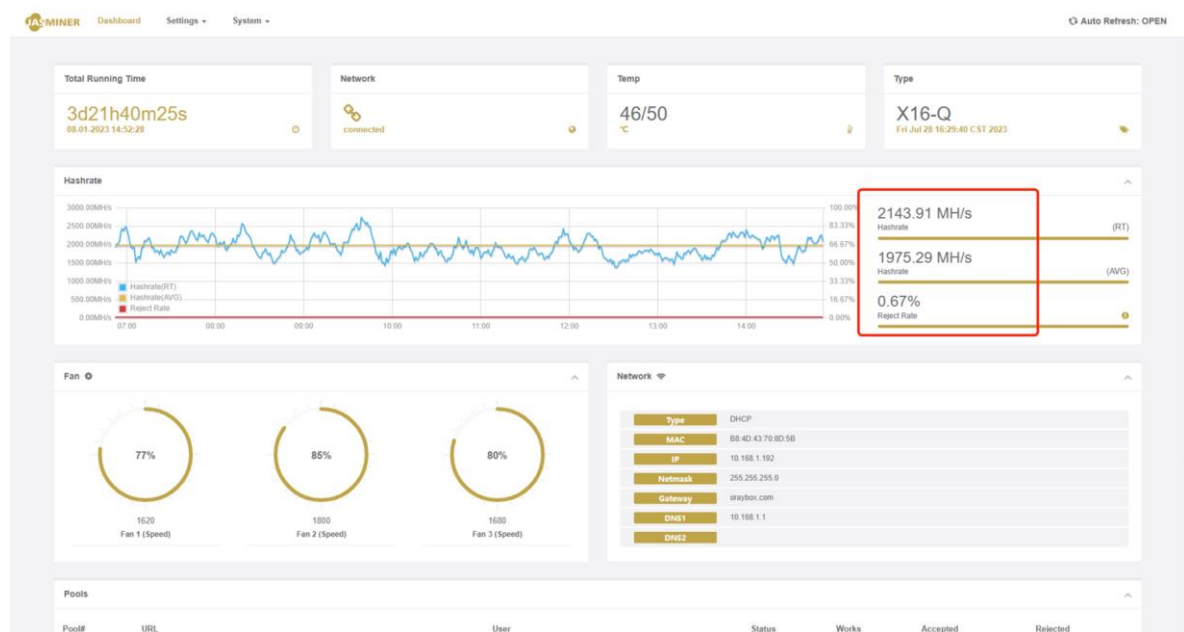


- Enter the preferred and two alternative mining pool address, account number and password, and refer to the mining pool tutorial;
- Select the algorithm, this machine support and two algorithms (ETC/ETH), the default is the ETH algorithm;
- After the selection is complete, click "UPDATE" to submit, and the configuration is complete.

The screenshot shows the mining configuration page with the following fields and annotations:

- Pool 1:**
  - URL: stratum+tcp://etc-zil.2pool.com:6200 (Annotated: Mining pool address)
  - Worker: jasminer2023.jasminer012
  - Password: (Annotated: Account)
- Pool 2:**
  - URL: stratum+tcp://etc-zil.2pool.com:6200
  - Worker: jasminer2023.jasminer012
  - Password: 123 (as default) (Annotated: Password: 123 (as default))
- Pool 3:**
  - URL: stratum+tcp://etc-zil.2pool.com:6200
  - Worker: jasminer2023.jasminer012
  - Password: (Annotated: Mining protocol)
- Advanced Section:**
  - Pool Protocol: Getwork
  - Coin Select: ETC+ZIL (Annotated: Coin Select)
  - Work Mode: Balance
  - Buttons: Submit, Cancel (Annotated: Choose frequency)

c) After runs about 10 minutes, you can view the corresponding hashrate information on the Status page.



Configuration to this high-throughput server is completed.

## 5. Wi-Fi link

- Long press the front panel "IP Report" until both Operation light and Fault light on.



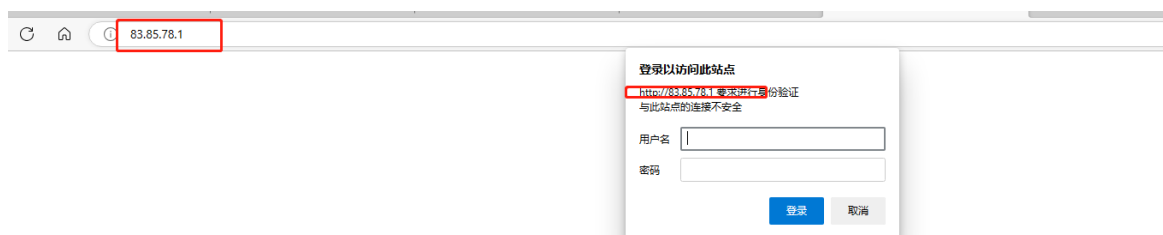
- Find the "Jasminer-ap..." from your computer, and link this WiFi, Default password: 12345678



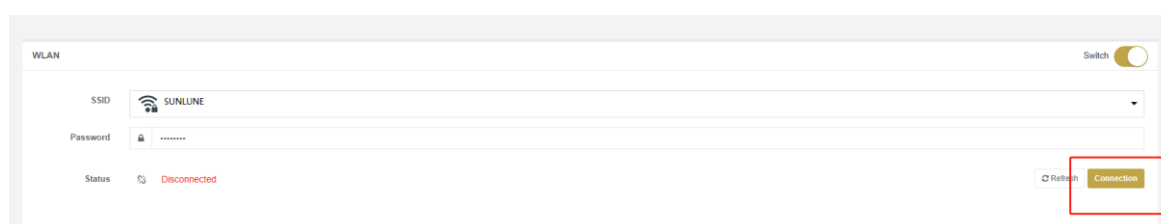
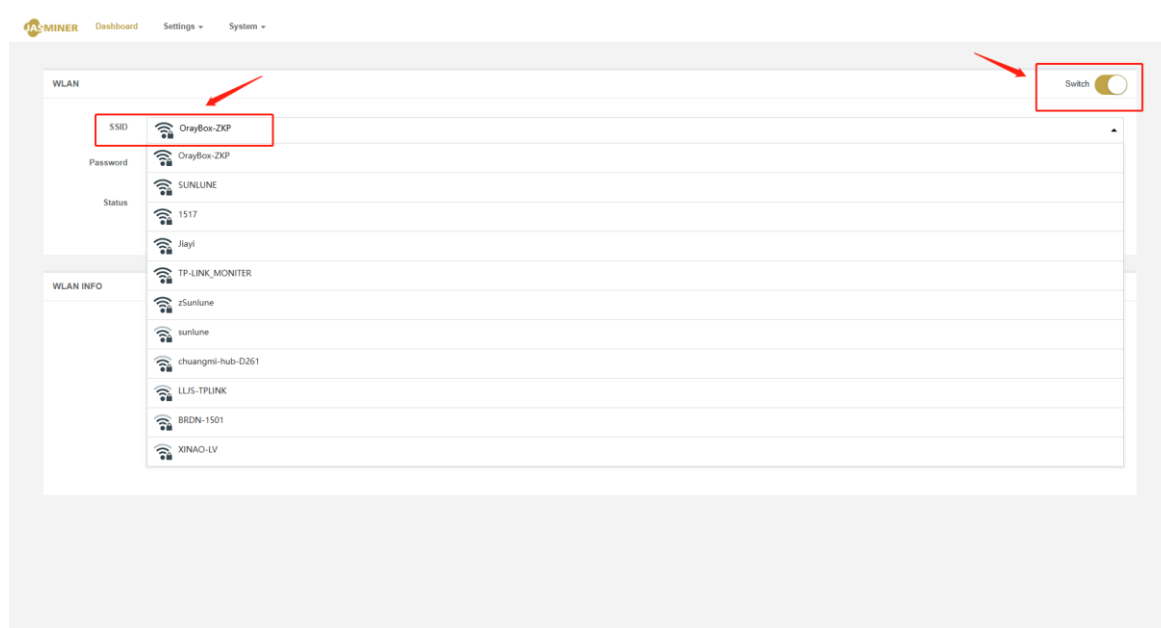
c) After connecting to the Jasminer machine' s Wi-Fi, open your web browser, enter the address "83.85.78.1" and click Enter and Login to the backend console

User name:root

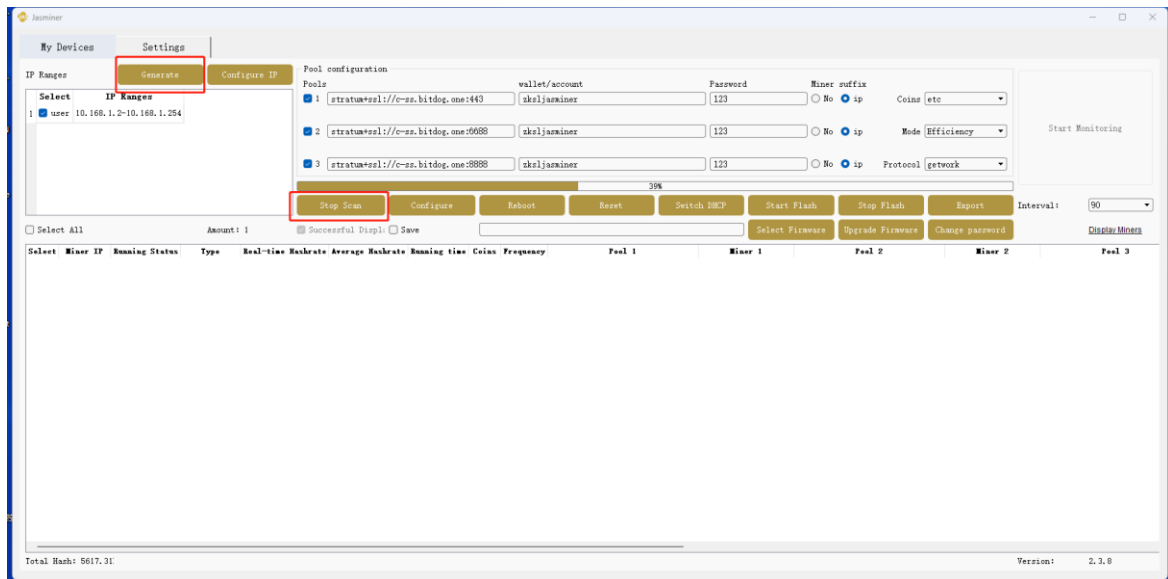
Password:root



d) Configure Wi-Fi, enter Setting→WLAN→Switch, click Connection to link to your common network.



e) Link the computer to the same network with mining machine, return to the regular link, and scan out the machine' s IP.



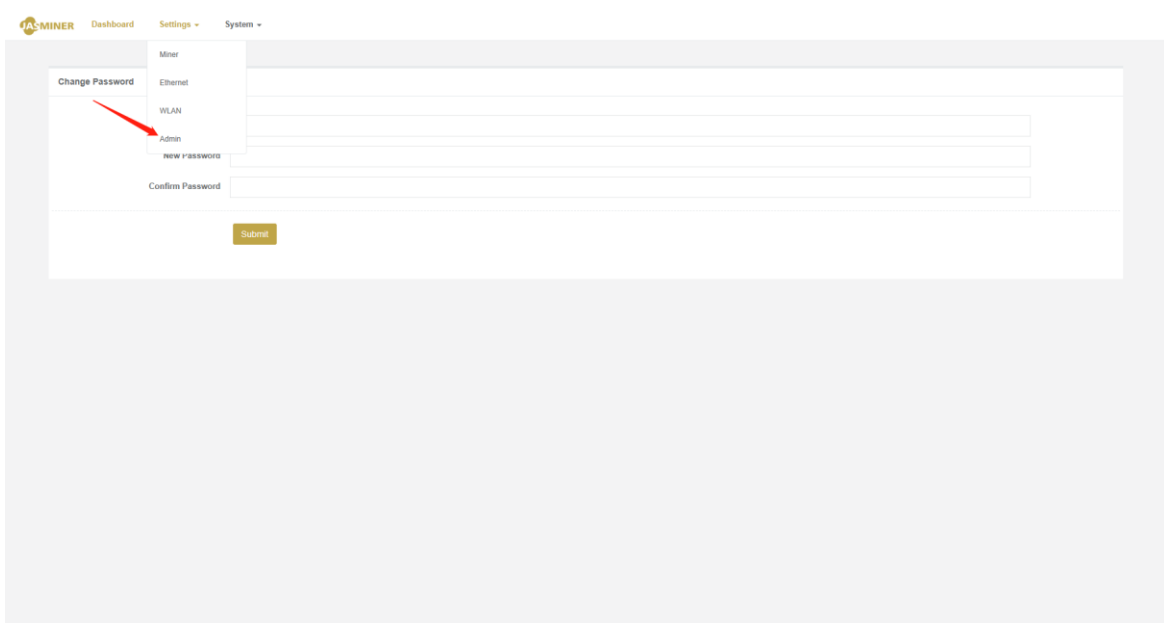
## 6. Other settings

a) Change the login password: need to change the login name and password information, select Setting→Admin "configuration item. Default login

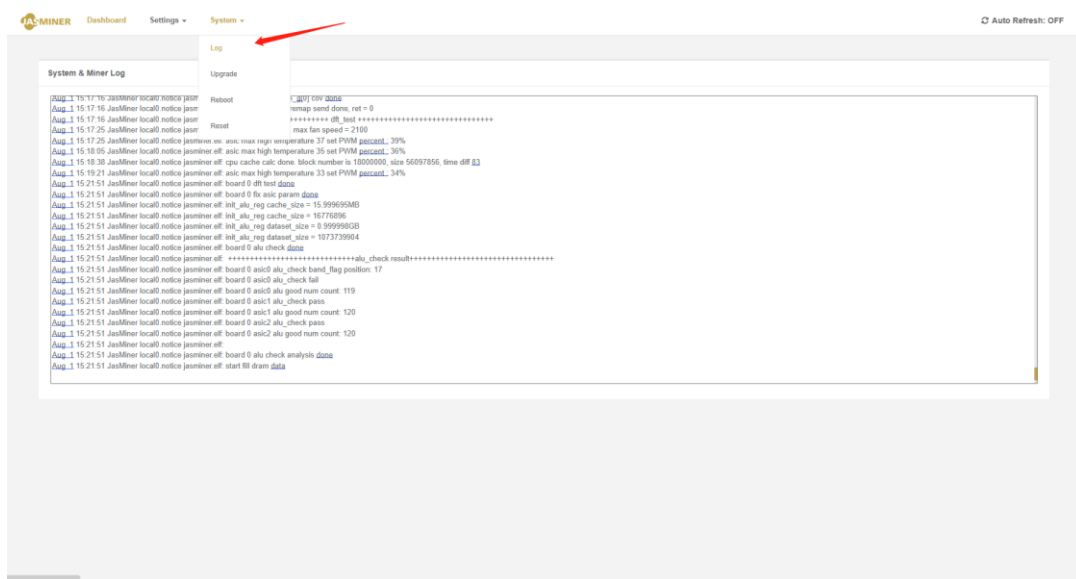
Default name:root

Default password:root

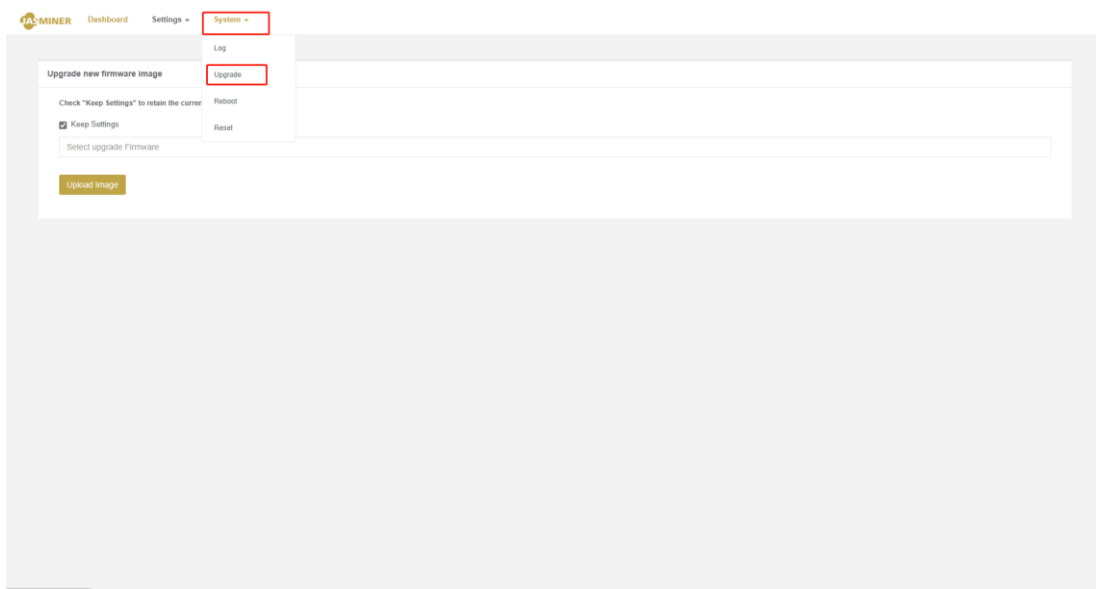
Click" UPDATE " to take effect.



b) View log: To view system operation information, you can select the "Log" option;

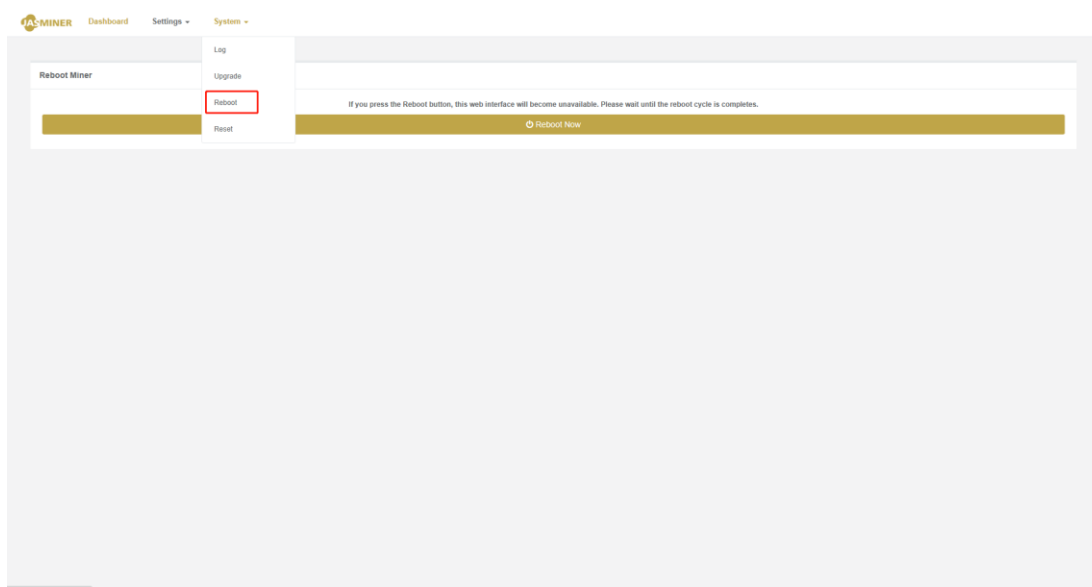


c) Upgrade the system firmware: select the "Upgrade" option, select the firmware that needs to be upgraded, and click "Upload image" to complete the upgrade operation;

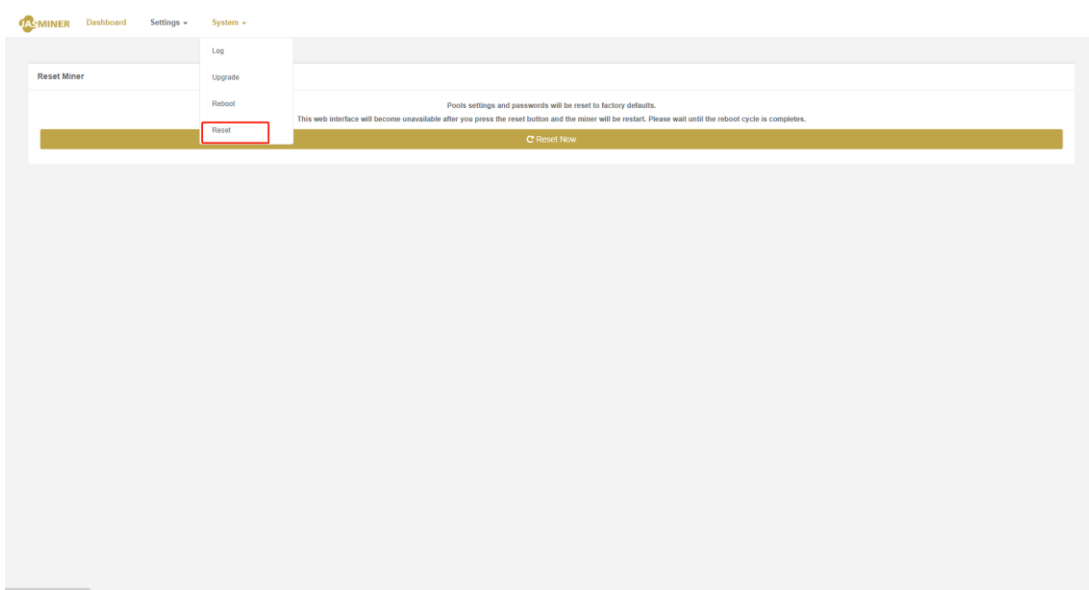




d) Restart the machine: select "Reboot" and click "Reboot Now";



e) Machine restore the factory settings, select "Reset" and click "Reset Now";



**FCC Caution:**

Any Changes or modifications not expressly approved by the party responsible for compliance could void the user's authority to operate the equipment.

This device complies with part 15 of the FCC Rules. Operation is subject to the following two conditions:

- (1) This device may not cause harmful interference, and
- (2) This device must accept any interference received, including interference that may cause undesired operation.

This equipment complies with FCC radiation exposure limits set forth for an uncontrolled environment. This equipment should be installed and operated with minimum distance 20cm between the radiator and your body.

Note: This equipment has been tested and found to comply with the limits for a Class B digital device, pursuant to part 15 of the FCC Rules. These limits are designed to provide reasonable protection against harmful interference in a residential installation. This equipment generates,uses and can radiate radio frequency energy and, if not installed and used in accordance with the instructions, may cause harmful interference to radio communications. However, there is no guarantee that interference will not occur in a particular installation. If this equipment does cause harmful interference to radio or television reception, which can be determined by turning the equipment off and on, the user is encouraged to try to correct the interference by one or more of the following measures:

- Reorient or relocate the receiving antenna.
- Increase the separation between the equipment and receiver.
- Connect the equipment into an outlet on a circuit different from that to which the receiver is connected.
- Consult the dealer or an experienced radio/TV technician for help.