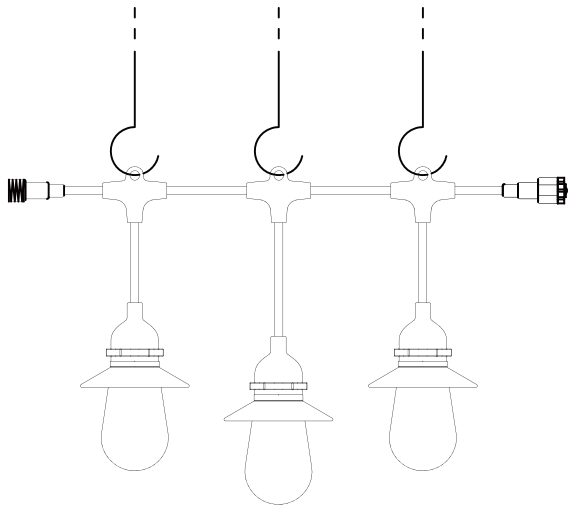


Smart Bulb Strings Light



USER MANUAL



Parameters

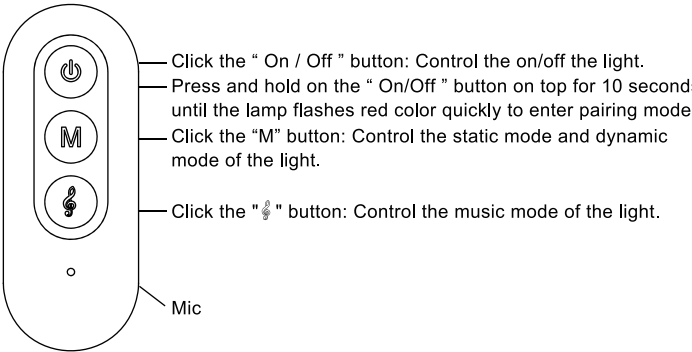
Input:	AC 100-240V
Power Supply Power:	36W
Color:	RGBIC+CCT
Working Temperature:	-20℃ to 40℃ / -4℉ to 104℉
Lifespan:	20,000 hours
Dimmability:	Yes (App/Voice/Button Controller/ Remote Controller)
Communication Protocol:	WiFi+Bluetooth (2.4Ghz b/g/n)
Compatible:	Google Assistant, Amazon Alexa

Packing

15 Bulbs: Power Supply x 1, Button Controller x 1, Remote Controller x 1, Bulbs x 15

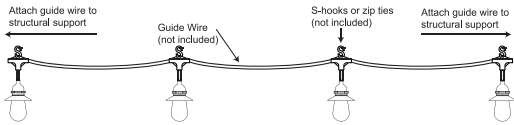
30 Bulbs: Power Supply x 1, Button Controller x 1, Remote Controller x 1, Bulbs x 30

Instructions for controller

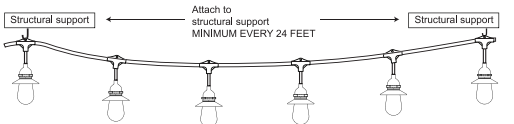


Installation Instruction

1. Attach using guide wire with s-hooks or zip ties (not included).

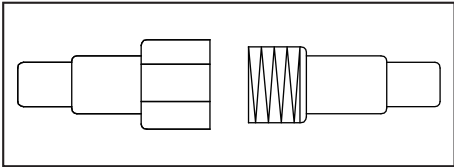


2. Attach directly to structural support minimum every 24 ft. / 7.3m using hardware (not included).



Replacing light bulbs and connecting multiple sets

1. Unscrew existing light bulb by twisting counterclockwise. Dispose of light bulb in appropriate manner.
2. Replace with E26 medium base light bulbs by screwing bulb into socket clockwise until the top of socket forms a tight seal around the bulb-this prevents moisture from getting into socket.
3. Connect multiple sets.

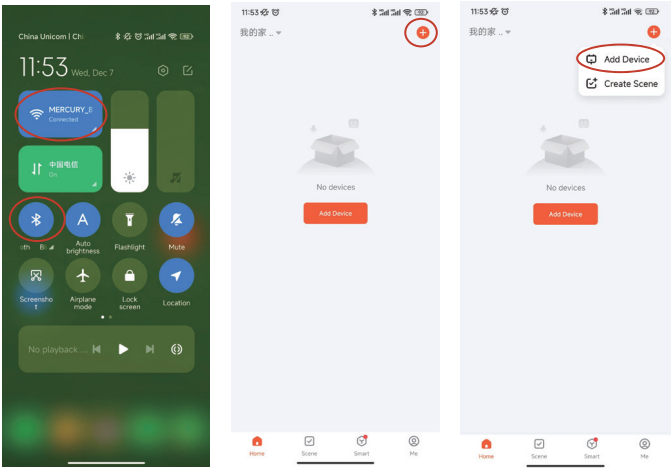


Steps of Connection on Mobile

1. A smart phone or tablet with IOS 8.0 (or later) or Android 4.3 (or later).
2. Download the "Tuya Smart" App from the APP store (IOS devices) or Google Play (Android devices).

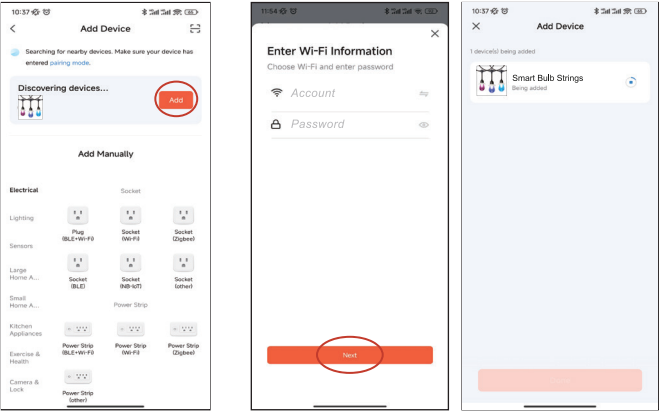


3. Open on the Bluetooth, Wifi (2.4Ghz), and App. Click "+" and then click "Add Device" to search for nearby devices.

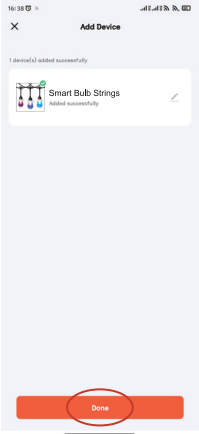


4. Press and hold on the "On / Off" button on controller for 10 seconds until the lamp flashes red color quickly to enter pairing mode.

5. After discovering the device,click "Add".
6. Enter password and connect the Wifi (2.4Ghz), then click "Next". Waiting for the connection.



7. Done!



APP interface

Color

Colorful Light

ON / OFF

Adjust Brightness (1%-100%)

Adjust DIY Color

Erase DIY Color

Turn on / off the specified lights to DIY to fit for different occasions. Also save energy and money.

Adjust or erase DIY colors on the Light

Adjust DIY Color

Erase DIY Color

Turn on / off the specified lights to DIY to fit for different occasions. Also save energy and money.

Adjust or erase DIY colors on the Light

Preset Scene

DIY Scene

Create custom light scene by yourself

Music

The light follows the rhythm of the music collected by the device microphone.

Schedule

Create your own plan.

Actual point

If your light has been cut during use, you can adjust the actual length to better set up the light strip.

Caution

- To reduce the risk of fire, electric shock or injury to persons:**
1. Commercial grade string light is intended for installation indoors or outdoors.
 2. String lights must be supported by steel guide cables or other suitable supporting hardware such as s-hooks, zip ties or bolts (not included). Proper diameter cabling must be used for the maximum span distance between supports according to local building codes. See installation instructions for details.
 3. Light sockets must be installed base up so that bulbs are facing down ONLY.
 4. Keep combustible material clear of bulbs with a minimum of 3 space from the nearest object.
 5. Do not cluster the bulbs.
 6. Not intended for installation in ceilings, soffits, cabinets or other enclosed spaces.
 7. Do not secure light strings to building or other structural supports using nails, staples or other sharp conducting materials that might damage the wires.
 8. Avoid damage to the insulation during installation. Do NOT pierce or otherwise compromise wire or socket outer covering.
 9. Periodically inspect wire and sockets for degradation due to weather, UV light or other damage. Discontinue use of worn out light string.

FCC Warning:

This equipment has been tested and found to comply with the limits for a Class B digital device, pursuant to part 15 of the FCC Rules. These limits are designed to provide reasonable protection against harmful interference in a residential installation. This equipment generates, uses and can radiate radio frequency energy and, if not installed and used in accordance with the instructions, may cause harmful interference to radio communications. However, there is no guarantee that interference will not occur in a particular installation. If this equipment does cause harmful interference to radio or television reception, which can be determined by turning the equipment off and on, the user is encouraged to try to correct the interference by one or more of the following measures:

- Reorient or relocate the receiving antenna.
- Increase the separation between the equipment and receiver.
- Connect the equipment into an outlet on a circuit different from that to which the receiver is connected.
- Consult the dealer or an experienced radio/TV technician for help.

Caution: Any changes or modifications to this device not explicitly approved by manufacturer could void your authority to operate this equipment.

This device complies with part 15 of the FCC Rules. Operation is subject to the following two conditions:

(1) This device may not cause harmful interference, and (2) this device must accept any interference received, including interference that may cause undesired operation.

This equipment complies with FCC radiation exposure limits set forth for an uncontrolled environment. This equipment should be installed and operated with minimum distance 20cm between the radiator and your body.