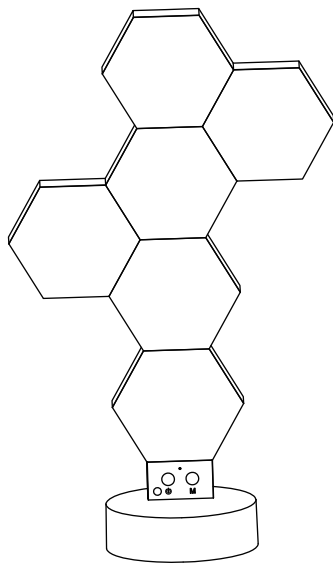


Smart Hexagon Light



USER MANUAL



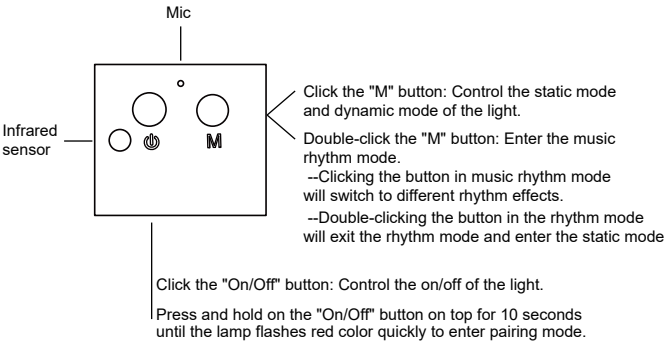
Parameters

Input:	DC 5V / 2A
Color:	RGBIC
Working Temperature:	-20 ℃ - 40 ℃
Lifespan:	25,000 hours
Dimmability:	Yes (App/Voice/Controller)
Communication Protocol:	WiFi+Bluetooth (2.4Ghz b/g/n)
Compatible:	Google Assistant, Amazon Alexa, Siri

Packing

Hexagon Lights x 6, Linker x 6, Controller x 1, DC cable x 1
Manual x 1, Double-sided adhesive tape x 6, Base x1, Fixed buckles x 6
Remote controller x 1

Instructions for controller



Installation Instruction

1. Install controller on the base.
2. Connect the DC cable to the controller.
3. Connect the controller and hexagon light with a linker.
4. Install one fixed buckle between the controller and the hexagon.
5. Connect the two hexagon lights with a linker.
6. Install one fixed buckle between two hexagon light.
7. Continue this process until all your panel lights are fully mounted.

Steps of Connection on Mobile APP

1. A smart phone or tablet with IOS 8.0 (or later) or Android 4.3 (or later).
2. Download the "Tuya Smart" App from the APP store (IOS devices) or Google Play (Android devices).



Google play

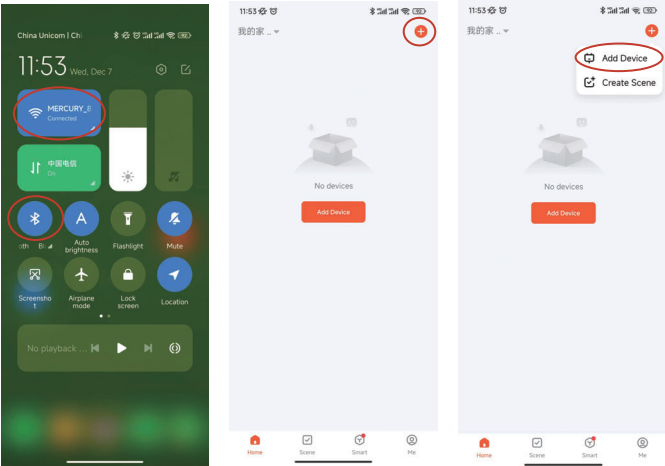


Apple store



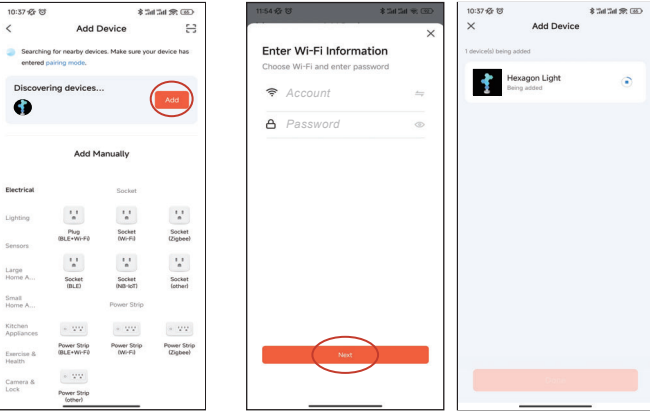
APP:Tuya Smart

3. Turn on the Bluetooth, Wifi (2.4Ghz), and App. Click "+" and then click "Add Device" to search for nearby devices.

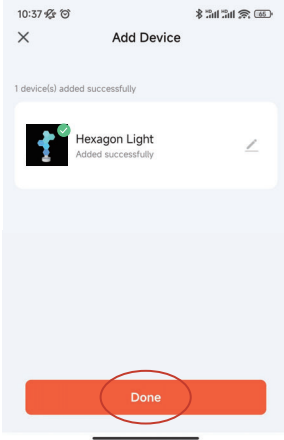


4. Press and hold on the "On/Off" button on controller for 10 seconds until the lamp flashes red color quickly to enter pairing mode.

5. After discovering the device,click "Add".
6. Enter password and connect the Wifi (2.4Ghz), then click "Next". Waiting for the connection.

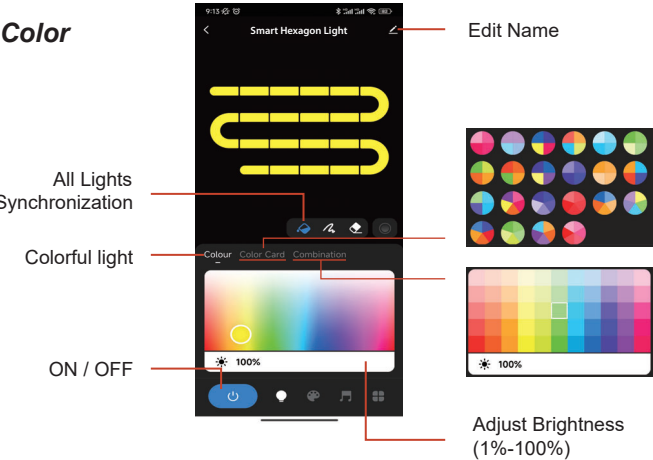


7. Done!

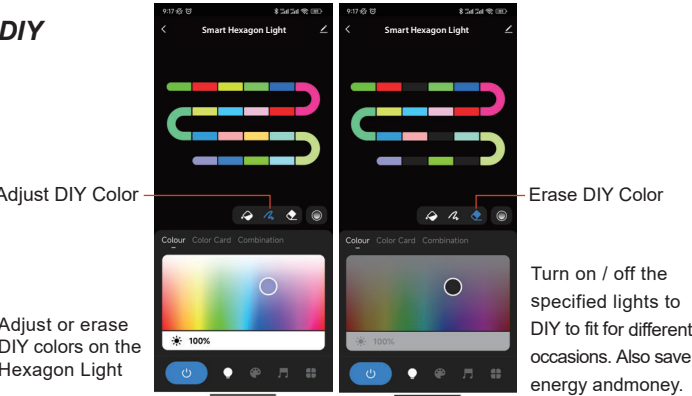


APP interface

Color

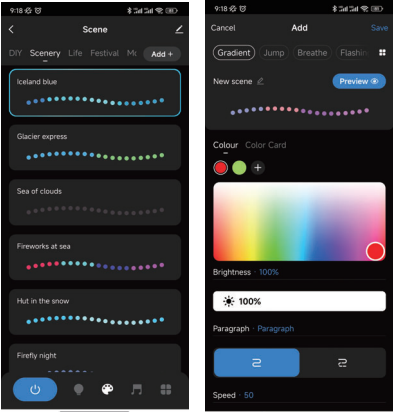


DIY



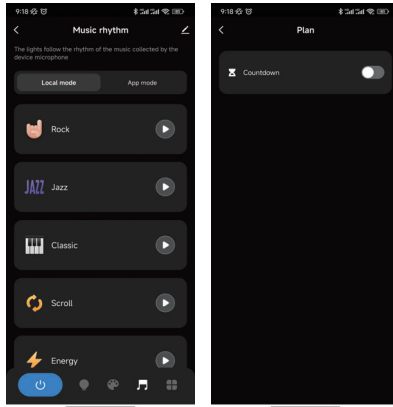
Preset Scene

44 Scenes for option



Music

Lights colors will change with the music beats or your microphone.



DIY Scene

Create custom light scene by yourself

Cautions

1. This light panel is ideally used on smooth surfaces (e.g. glass, etc.); not suitable for uneven, bumpy or wet surfaces (e.g. brick, stucco, etc.).
2. Clean and ensure the surface is totally dry before sticking the light panel on.
3. When installing the light panel, press its central point against the wall for more than 30s in order to maximize the adhesion.
4. Avoid installation above heat source objects, in areas where direct sunlight, airflow and temperature change significantly.
5. Avoid exposing the product to the outside and directly in the rain.
6. Do not use sharp and hard objects or rough pollutants to impact the atmosphere lamp, so as not to affect the function and appearance.
7. Do not leave the power cord idle on the ground to avoid stumbling.
8. Children who are not supervised by adults are not allowed to use this product alone. Some parts of this product are imported,there is a risk of choking.

FCC Statement

Changes or modifications not expressly approved by the party responsible for compliance could void the user's authority to operate the equipment. This equipment has been tested and found to comply with the limits for a Class B digital device, pursuant to Part 15 of the FCC Rules. These limits are designed to provide reasonable protection against harmful interference in a residential installation. This equipment generates uses and can radiate radio frequency energy and, if not installed and used in accordance with the instructions, may cause harmful interference to radio communications. However, there is no guarantee that interference will not occur in a particular installation. If this equipment does cause harmful interference to radio or television reception, which can be determined by turning the equipment off and on, the user is encouraged to try to correct the interference by one or more of the following measures:

- Reorient or relocate the receiving antenna.
- Increase the separation between the equipment and receiver.
- Connect the equipment into an outlet on a circuit different from that to which the receiver is connected.
- Consult the dealer or an experienced radio/TV technician for help

This device complies with part 15 of the FCC rules. Operation is subject to the following two conditions (1) this device may not cause harmful interference, and (2) this device must accept any interference received, including interference that may cause undesired operation.

This equipment complies with FCC radiation exposure limits set forth for an uncontrolled environment. This equipment should be installed and operated with minimum distance 20cm between the radiator and your body.