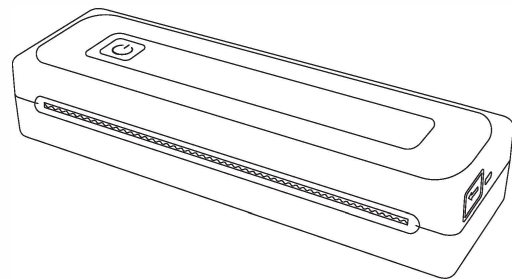


Portable Printer

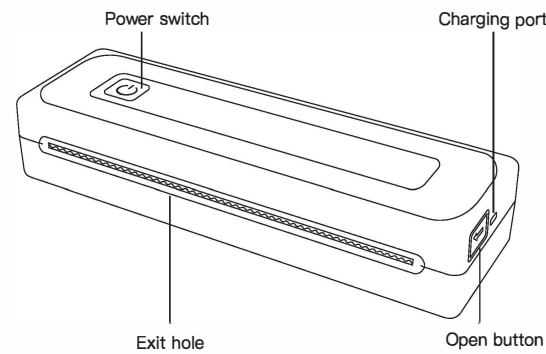


Instruction manual

1.Product information

Product name	A4B portable printer
Product model	A4B
Net product weight	726g
Product size	261.7mm*81mm*47mm
Print type	Thermal printing
Input voltage	DC 5V/2A
Battery capacity	2000mAh
Automatic shutdown	30min
Standby time	About 30 days
Charging time	About 1.5H
Continuous printing	A4 thermal paper 90 sheets
Paper width specification	210mm or 218mm
Charging interface	Type-C

2.Product structure



3.Product packing list



4.Application installation

- For Apple users, you can also search for "iPrint" in the AppStore to download the APP;
- Android users can also usearch for "iPrint" in the Google Play to download the APP.

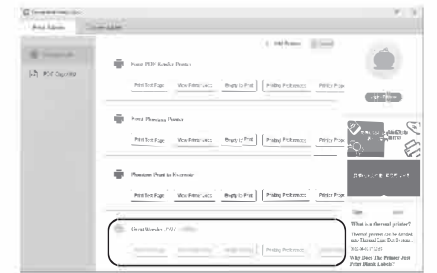
5.Connected application

After the device is turned on, turn on the Bluetooth function of the mobile phone, open the app, click the "Select equipment" button at the top,Go to the "My Device" page and click the Bluetooth name at the beginning of GT08 to connect the printer Bluetooth.If Bluetooth is not displayed after entering, please click refresh button and try again.



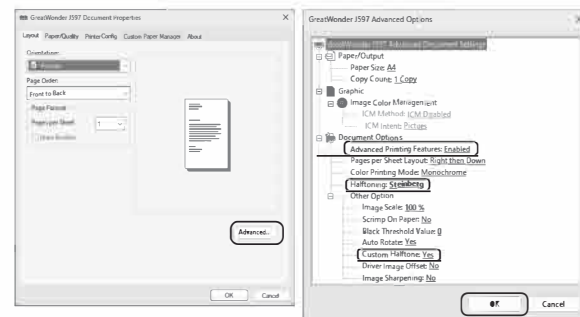
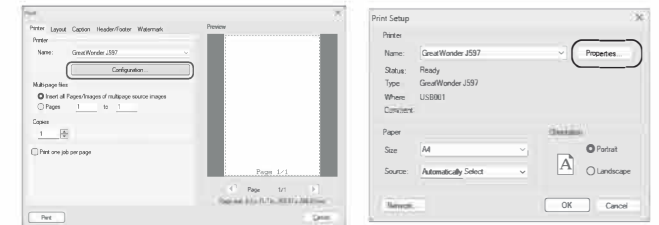
6.Personal computer connection operation

- To download the application package, go to "[https://drive.google.com/file/d/1aZPPkPUTLRbaEc3QtwbyX929kwZKQwff/view?usp=sharing](\"https://drive.google.com/file/d/1aZPPkPUTLRbaEc3QtwbyX929kwZKQwff/view?usp=sharing\")" in your browser;
- Connect computer and printer host with data cable after installation;
- Select the device "GreatWonder J597" to print.



Note: When printing files, use the following Settings to improve the printing effect.

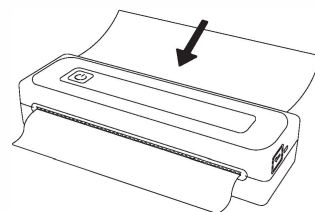
- Select GreatWonder J597 in the print pop-up window and click "Configuration";
- Click "Properties" on the print setup page to proceed to the next step;
- Click "Advanced" Options under the Layout section of the properties page;
- In the Advanced options pop-up window, change the items selected in the box to be consistent, and finally click "OK".



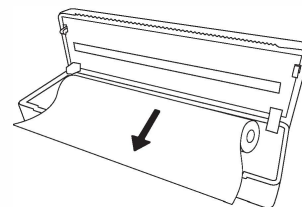
7.Switch on and off

Power on: Long press the power button for 3 seconds until the indicator lights up;
Shutdown: Changan power button for 3 seconds until the light is off.

8.Feed operation



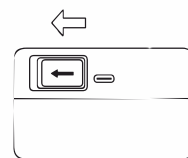
A4 paper feed operation



Roll paper feed operation

9.Paper jam, exception handling and cleaning

Press the open cover button to open the flap assembly and rotate at a certain Angle.
Do not force the paper out when the paper is jammed, otherwiseit will easily cause damage to the printer.



10.Pilot lamp

Steady on	Bluetooth connected
flicker	Wait for connection
Red light	Charging

11.Q&A

- Q: No connected device is found when I add a device to the APP?
A: Please check whether the device is turned on to ensure that the Bluetooth is working.
- Q: What can I do if my device cannot print?
A :① Confirm whether the Bluetooth of the mobile phone is turned on, and exclude the possibility of others connecting to this device.
② Check whether the thermal paper is jammed.
③ Whether the print head is overheating, if it is overheating, please wait for the print head to cool before trying to print.
- Q: Why is the print all white paper, no content?
A: It may be caused by incorrect installation of printing paper. Please refer to the introduction of Replacing printing paper to reinstall it.
- Q: Why did the printed word fade?
A :① Please check whether the device is low power.
② Check whether the print head is covered with stains, please wipe gently with an alcohol cloth

12.Safety and precautions

- Do not charge or use the printer in hot, humid or dusty places.
- Please charge with 5V2A input and charge with mobile phone power adapter.
- After printing, do not touch the print head directly to prevent overheating and scalding.
- Gently insert or remove the charging cable to prevent excessive force from damaging the interface.
- Improper charging may result in print head damage.
- Unplug the charging cable after charging.
- Place the machine on a solid and stable horizontal plane to prevent the machine from slipping and damaging.
- Please turn off the power when you do not use the machine for a long time.
- Prevent foreign matter from being transferred into the machine, so as not to cause failure or other risks.

This device complies with part 15 of the FCC Rules. Operation is subject to the following two conditions: (1) this device may not cause harmful interference, and (2) this device must accept any interference received, including interference that may cause undesired operation. Any changes or modifications not expressly approved by the party responsible for compliance could void the user's authority to operate the equipment.

NOTE: This equipment has been tested and found to comply with the limits for a Class B digital device, pursuant to Part 15 of the FCC Rules. These limits are designed to provide reasonable protection against harmful interference in a residential installation. This equipment generates, uses and can radiate radio frequency energy and, if not installed and used in accordance with the instructions, may cause harmful interference to radio communications. However, there is no guarantee that interference will not occur in a particular installation. If this equipment does cause harmful interference to radio or television reception, which can be determined by turning the equipment off and on, the user is encouraged to try to correct the interference by one or more of the following measures:

- Reorient or relocate the receiving antenna.
- Increase the separation between the equipment and receiver.
- Connect the equipment into an outlet on a circuit different from that to which the receiver is connected.
- Consult the dealer or an experienced radio/TV technician for help.

The device has been evaluated to meet general RF exposure requirement. The device can be used in portable exposure condition without restriction