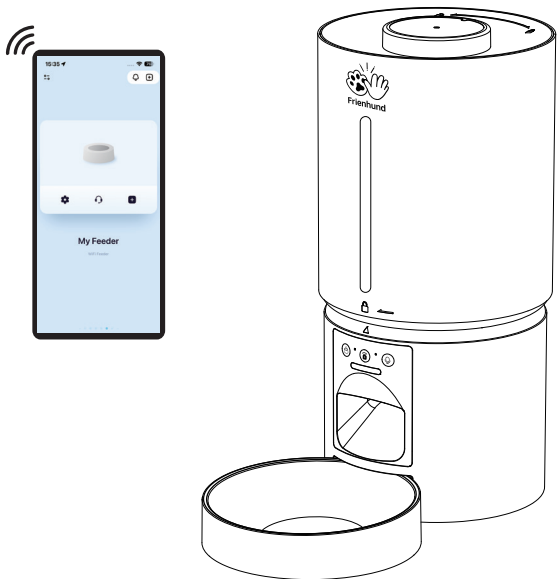




User Manual

Smart Pet Feeder

Model:ACF900D



If the product is upgraded in the following please refer to the actual product in hand.

Safety Instructions



Please do not use wet, canned or moist food.



This product uses 3× D Cell Batteries as a backup power supply. Please use double power supply to ensure the normal use of the product.



Examine the feeder after installation. Do not plug in if there is water on the power cable or plug.



Do not immerse the base part in water at any time as it may damage electronic components.



Do not disassemble the feeder other than as instructed in this user manual.



Only use accessories recommended or sold by the manufacturer. The use of accessories not recommended or sold by the manufacturer may cause an unsafe condition.



Dispose of all packaging materials properly. Some items may be packed in plastic bags, these bags could cause suffocation.

Warranty

Any questions about the use of the product, you can contact our brand after-sales staff. We will solve your problem until it is resolved.

◆ 1-Year Warranty

◆ 24/7 Online Support

For guidance on product use and warranty extension, please contact our brand after-sales staff via email: **[service@frienhund.com]**
If any questions related to orders, please contact the seller through the shopping platform.

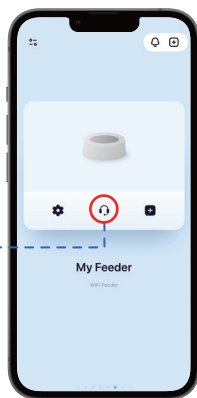
◆ Help & Feedback:

Please edit the information, including **The Order Number +Question**, and send it to our brand's after-sales staff.

◆ Monday-Friday:

Tel: 1-877-631-3655, (PST 8:00 am-5:00pm)

◆ Installation Video



Product Specifications

Product Name	Smart Pet Feeder
Model	ACF900D
Suit For	Cat, Dog, Rabbit, Small Pets, Multiple Pets
Rated Voltage	5V 1A
Product Power	5W
Power Supply	Power Adapter and 3× D Cell Batteries
Material	Eco-Friendly ABS
Product Size	172*305*350mm(6.8*12*13.8in)
Product Weight	1.2kg/2.64lb
Product Capacity	5L
Pet Food	Dry Food
Portion Size	4-7g (0.008-0.015lb)

Packing List



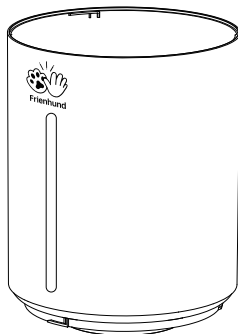
Lid*1



Power Adapter*1



Desiccant*1



Food Tank*1



USB Cable*1



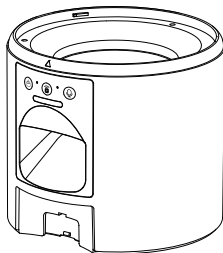
Desiccant Compartment*1



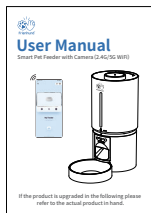
Stainless Steel Feeding Bowl*1



Bowl Tray*1



Feeder Base*1

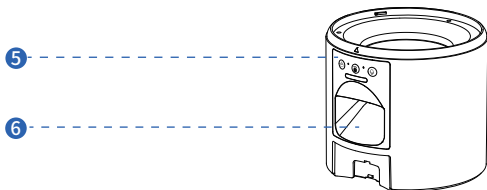
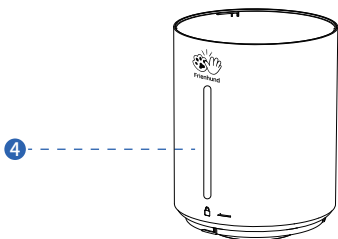
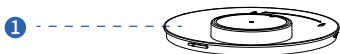


If the product is upgraded in the following please refer to the actual product in hand.

User Manual*1

Product Overview

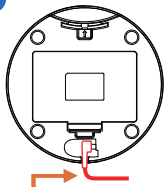
1	Lid
2	Desiccant
3	Desiccant Compartment
4	Food Tank
5	Control Panel
6	Food Outlet
7	Stainless Steel Feeding Bowl
8	Bowl Tray



Assembled Products

Step 1 Connecting Power

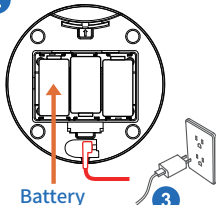
1



Power Cable

- Plug the 5V power adapter into the bottom of the feeder.

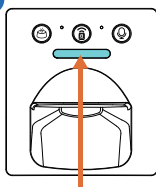
2



Battery

- Install 3× D Cell Batteries in the bottom of the feeder in case of power outages in the home.
- Plug in the home power supply.

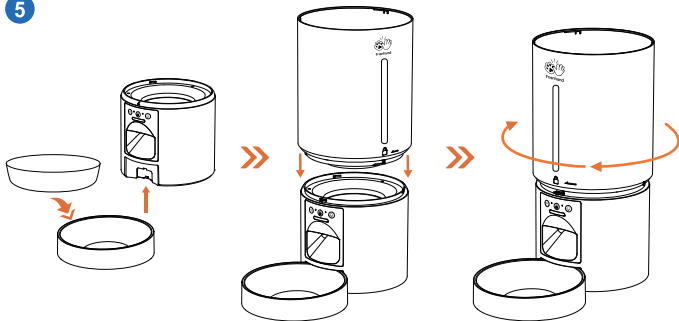
4



Indicator

- When the indicator light flashes blue and a voice prompt is heard, it indicates that the network is awaiting a connection.

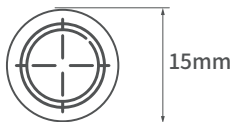
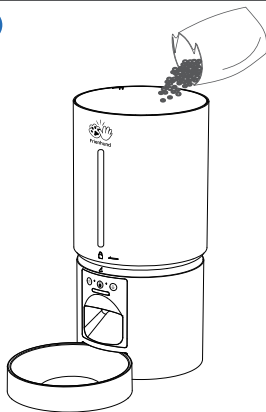
5



- Place the stainless steel bowl into the bowl tray. Insert the bowl tray into the feeder base.
- The opening in the bottom of the food tank should match the opening in the base of the feeder, then turn clockwise to lock.

Step 2 Add Food and Close the lid

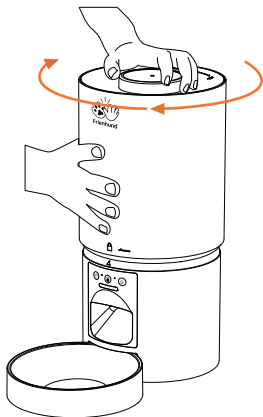
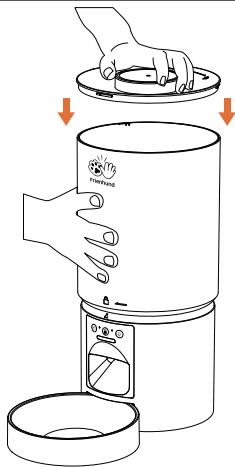
6



Note:

1. Please pour in dry food, not wet food or canned food.
2. Recommend kibble size(Less than 15mm)

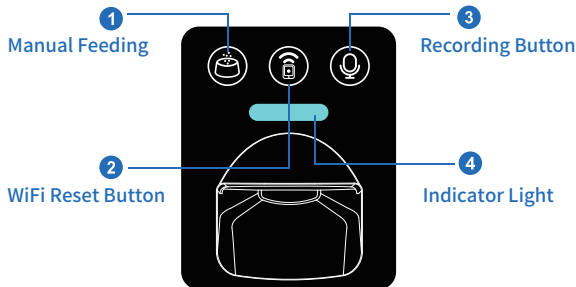
7



Buttons Explained

Note:

- Battery power is only for emergency use in case of power failure, please ensure dual power supply for normal use.
- Make sure the feeder and home WiFi are connected, the distance between the two should not be too far apart. Within 6m (19.7ft), depending on router coverage area.



Recording Button

1. Record Sound



2. Check the Recordings



Press to play the recorded sound

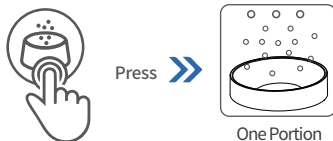
3.Clear Recording







WiFi Reset



Manual Feeding



Indicator Light Description

Color of Light	Status
 Blue Light Flashing	Waiting for WiFi Connection
 Blue Light Always On	WiFi Connected
 Red Light Flashing	Low Battery (Battery Powered Only)
 Red Light Always On	Enough Battery (Battery Powered Only)

Install the APP and Log In

■ App Installation

Scan the QR code or search in your device's app store to download and install the iCam 365 app.

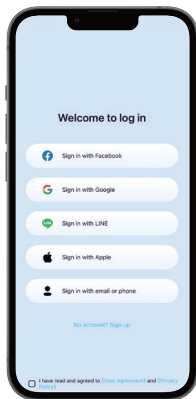


iCam 365



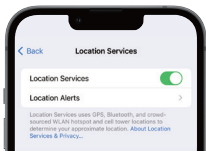
■ Sign up and log in

After opening the app, if you don't have an account, please register one. If you have already, please log in directly.



Add Feeder to APP

Step 1: Turn on phone permissions.



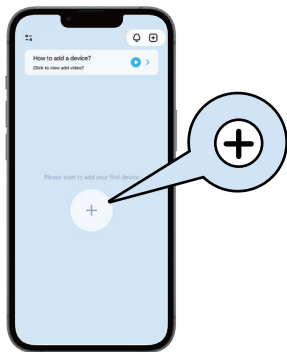
▲Note:

1. Before adding the device to the APP, please make sure the indicator light on the feeder is blinking blue, as well as the **Bluetooth**, **WLAN**, and **GPS** in your phone are on.
2. The connection can only be established when plugged in and not powered by battery.

Step 2: The feeder is ready to connect to the network

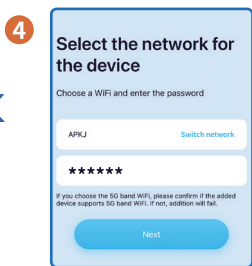
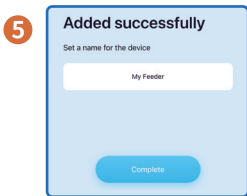
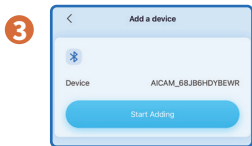
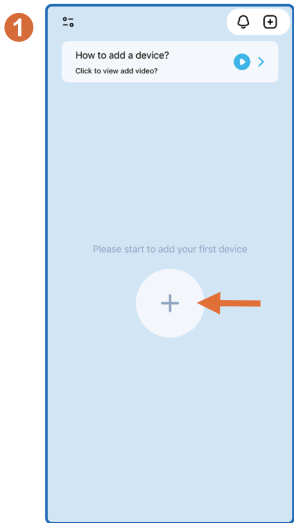
- ◆ Turn on the power to the feeder.
- ◆ Make sure the indicator light on the feeder is **flashing blue** and **is accompanied by a voice prompt**.

- 1 Please open the “iCam365” APP → Click the [+] in the middle to add a device.

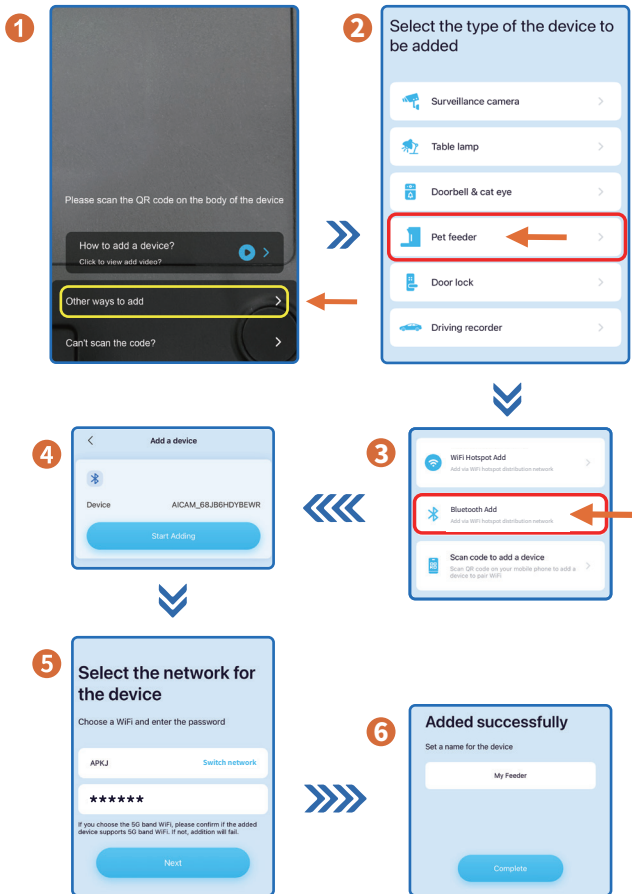


- 2 Please follow the app prompts to operate.

Method 1



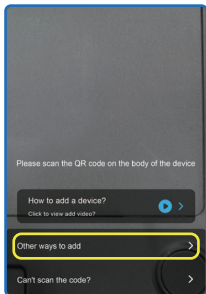
Method 2 Bluetooth Connection



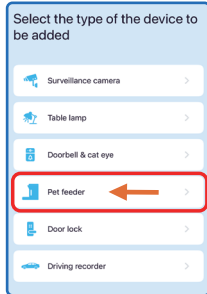
Method 3

Wi-Fi Hotspot Connection

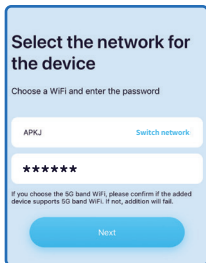
1



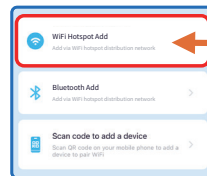
2



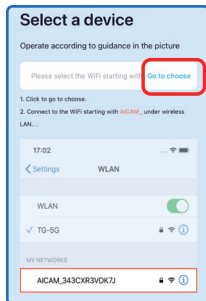
4



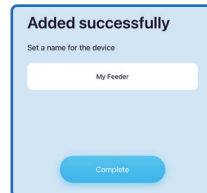
3



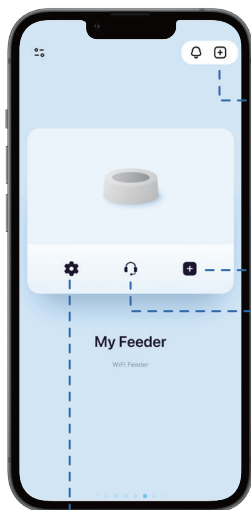
5



6



Features Functions



Add a Device



List Mode



More Settings



Help & Feedback:

Any questions about the use of the product, you can contact our brand after-sales staff. We will solve your problem until it is resolved.

Settings:

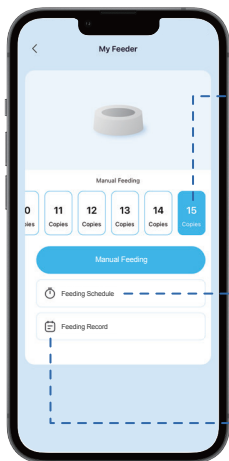


Share

Notification settings

Indicator light switch

Feeder Functions



Manual Feeding:

Up to 15 portion per click.



Feeding Schedule:

Daily feeding schedule can be set up for up to 10 meals.

(When setting, be sure to select the date)



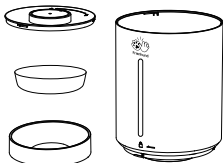
Feeding Records:

Feeding history can be viewed.

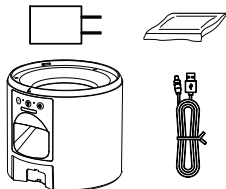
Disassemble for Cleaning

We recommend to clean the feeder regularly for the health of your pet. The washable parts of the feeder are as follows: lid, food tank, stainless steel feeding bowl, bowl tray.

Washable Parts



Do Not Wash



Problem	Solution
Can't connect the feeder to WiFi	1) Make sure Bluetooth, WLAN and GPS are turned on on your phone when connecting. (Can be turned off after successful connection)
	2) Try connecting with other connections method.
	3) The WiFi network may be unstable; please attempt to connect multiple times.
	4) It is advisable to connect the device near the router (ideally within 3 meters).
	5) Consider switching to a 2.4G network connection.
	6) Troubleshoot the router to see if it is working properly (try rebooting the router)
	7) Contact us through the contact form above and we will address your questions until they are resolved.
The WiFi connection goes off line frequently	1) Make sure the feeder has a good signal within the WiFi coverage area.
	2) Check that the power cord is stably connected.

FCC Statement

This equipment has been tested and found to comply with the limits for a Class B digital device, pursuant to part 15 of the FCC Rules.

These limits are designed to provide reasonable protection against harmful interference in a residential installation. This equipment generates, uses and can radiate radio frequency energy and, if not installed and used in accordance with the instructions, may cause harmful interference to radio communications. However, there is no guarantee that interference will not occur in a particular installation. If this equipment does cause harmful interference to radio or television reception, which can be determined by turning the equipment off and on, the user is encouraged to try to correct the interference by one or more of the following measures:

- Reorient or relocate the receiving antenna.
- Increase the separation between the equipment and receiver.
- Connect the equipment into an outlet on a circuit different from that to which the receiver is connected.
- Consult the dealer or an experienced radio/TV technician for help.

Caution: Any changes or modifications to this device not explicitly approved by manufacturer could void your authority to operate this equipment.

This device complies with part 15 of the FCC Rules. Operation is subject to the following two conditions: (1) This device may not cause harmful interference, and (2) this device must accept any interference received, including interference that may cause undesired operation.

RF Exposure Information

This equipment complies with FCC radiation exposure limits set forth for an uncontrolled environment. This equipment should be installed and operated with minimum distance 20cm between the radiator and your body.

ISED Statement

English:

This device contains licence-exempt transmitter(s)/receiver(s) that comply with Innovation, Science and Economic Development Canada's licence-exempt RSS(s). Operation is subject to the following two conditions:

- (1) This device may not cause interference.
- (2) This device must accept any interference, including interference that may cause undesired operation of the device.

The digital apparatus complies with Canadian CAN ICES - 3 (B)/NMB - 3(B).

French:

Cet appareil contient des émetteurs/récepteurs exempts de licence qui sont conformes aux RSS exemptés de licence d'Innovation, Sciences et Développement économique Canada.

L'exploitation est soumise aux deux conditions suivantes :

- (1) Cet appareil ne doit pas provoquer d'interférences.
- (2) Cet appareil doit accepter toute interférence, y compris les interférences susceptibles de provoquer un fonctionnement indésirable de l'appareil.

L'appareil numérique du ciem conforme canadien peut - 3 (b) / nmb - 3 (b).

This equipment complies with Canada radiation exposure limits set forth for an uncontrolled environment.

Cet équipement est conforme aux limites d'exposition aux rayonnements du Canada établies pour un environnement non contrôlé.

RF Exposure Statement

This equipment should be installed and operated with minimum distance 20cm between the radiator & your body.

Cet équipement doit être installé et utilisé à une distance minimale de 20 cm entre le radiateur et votre corps.



THANK YOU FOR TRUSTING AND CHOOSING Frienhund!

If there is anything you would like to say to us

- ✉ Email: service@frienhund.com 🌐 www.frienhund.com
- ☎ Tel: (1) 877-631-3655 (From Monday to Friday: 8 a.m.-5 p.m.)(PST)