



Goodbyemosquitoes.Hellobetterliving.

Whenamosquito entersyourroom.
Bzigo Irisstarts tracking it even in thedark.
Once itlands. Bzigo Iris alerts you.
pinpointing its location inreal time.
This allows you to effortlessly eliminate
each mosquito.



Detects mosquitoes



Sends alertstoyoursmartphone(s)

Works in all lighting conditions, even
in the dark



www.bzigo.com



SMARTINDOORMOSQUITOGUARDIAN

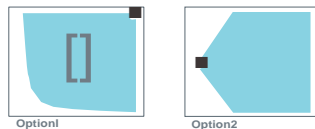


SMARTINDOORMOSQUITOGUARDIAN

QuickStart Guide

Step1: Placement in the Room

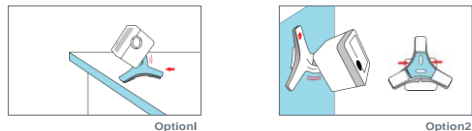
Place your Bzigolris in a corner away from busy areas where people or objects might block its view.



For best results, place your Bzigolris about 60 inches (150cm) from the ceiling and ensure it is aimed directly at the center of the ceiling.



You can use the tripod to place your Bzigolris on a flat surface or use the wall mount adapter to hang it on a wall.



Step2: Plugging in Power

Connect the included power adapter to your Bzigolris device and a power socket in the room.

Step3: Pairing Bzigolris With Your Smartphone

Scan the QR code located on the back of this guide or on the Bzigolris box to download the Bzigo App. The App is also available on the App Store and Google Play.

Follow the app instructions to connect the Bzigolris to your smartphone.

Step4: You are Ready!

Bzigolris is now ready to detect mosquitoes, mark them with a laser beam, and send alerts to your paired smartphone.

Step5: Connecting Multiple Smartphones to the Same Device

Simply repeat step 3 on each smartphone you wish to connect.

For further assistance, please visit us at bzigo.com/support



AI Vision Tech



Safe for Home



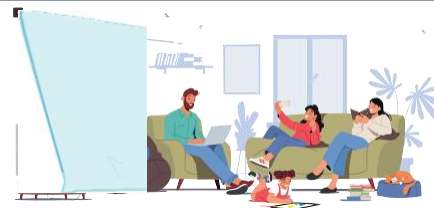
Non-toxic



Pet Friendly



Safe Class-1
Laser Pointer



FCC ID: 2BCAT-BZIGO-1

The FCC Wants You to Know

This equipment has been tested and found to comply with the limits for a Class B digital device, pursuant to Part 15 of the FCC rules. These limits are designed to provide reasonable protection against harmful interference in a residential installation. This equipment generates, uses and can radiate radio frequency energy and, if not installed and used in accordance with the instructions, may cause harmful interference to radio communications. However, there is no guarantee that interference will not occur in a particular installation. If this equipment does cause harmful interference to radio or television reception, which can be determined by turning the equipment off and on, the user is encouraged to try to correct the interference by one or more of the following measures:

- a) Reorient or relocate the receiving antenna.
- b) Increase the separation between the equipment and receiver.
- c) Connect the equipment to an outlet on a circuit different from that to which the receiver is connected.
- d) Consult the dealer or an experienced radio/TV technician.

Changes or modifications not expressly approved by the party responsible for compliance could void the user's authority to operate the equipment.

RF Exposure - This device has been tested for compliance with FCC RF exposure limits in a portable configuration. At least 20cm of separation distance between the Raptor device and the user's body must be maintained at all times. This device must not be used with any other antenna or transmitter that has not been approved to operate in conjunction with this device.

This device complies with Part 15 of the FCC Rules and Industry Canada licence-exempt RSS standard(s). Operation is subject to the following two conditions: (1) this device may not cause interference, and (2) this device must accept any interference, including interference that may cause undesired operation of the device.

Wireless notice

This device complies with FCC/ISED radiation exposure limits set forth for an uncontrolled environment and meets the FCC radio frequency (RF) Exposure Guidelines and RSS-102 of the ISED radio frequency (RF) Exposure rules. This transmitter must not be co-located or operating in conjunction with any other antenna or transmitter.