

G-903-F Manual

1. **Model No.:** G-903-F

- 2. (1). Packaging accessories :
 - A. Wireless mouse

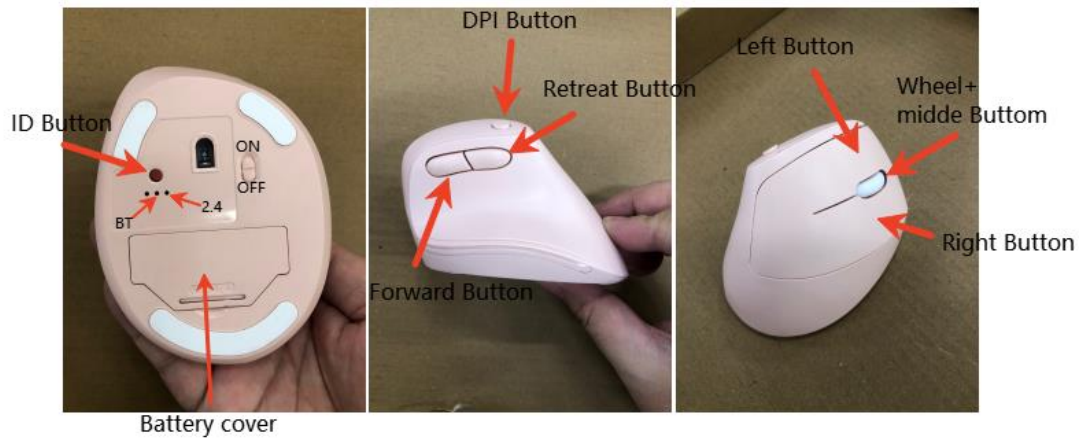


- B. USB receiver



- C. 1 x AA alkaline batteries

(2). Quick Operation Guide
Product overview (key description)



2. Correct use of wireless mouse:

- Step 1: Open the mouse battery cover, pick up the receiver, and plug it into the USB port of the computer. The computer will automatically load the receiver program
- Step 2: Remove the AA battery protective film and install it into the mouse battery slot shown in the diagram above
- Step 3: When the mouse pointer appears on the computer screen, you can freely enjoy your wireless optical mouse

3. Product Features:

1. Battery: 5#*1
2. Model: BK3632-SSOP20 3212
3. Buttons: L, M, R, ID, K4, K5, DPI
4. Short press the "ID" key to switch between 2.4G/BT, long press $\geq 3S$ to force Bluetooth broadcast
5. BT name: BT5.0 Mouse BT3.0 Mouse
6. DPI:1000/1600/2400(default)
7. Two-position switch, ON on top, OFF on bottom
8. DPI/low voltage indicator combined with the corresponding mode light
9. Low battery warning 1.1V, shutdown 1.0V
10. Poll rate Bluetooth 133HZ 2.4G wireless 250HZ

Supporting system:

IBM or compatible with Windows 7/ Windows 8/ Windows 10

MacOS X (V10.4 and above)

A usable USB interface

[About DPI]: DPI button is below the scroll wheel, you can fine-tune the moving speed from 800,1200 (default) to 1600 (total three gears) via this DPI button, and you can adjust it to the gear that suits you.

This product is designed in energy-saving mode

If the mouse is not used for 1 minute, it will enter the power saving state, and if it is not used for 10 minutes, it will automatically enter the deep sleep state, just click the left or right button of the mouse to wake it up.

Precautions:

When using such wireless devices, please try to stay away from interference sources, such as: household microwave ovens, etc.

If the mouse is found to be dirty after a long period of use, it can be wiped with a small amount of absolute alcohol, and the entire mouse must not be cleaned in liquid.

Warranty terms

This device comes with a 1-year limited product hardware warranty from the date of purchase

Safety reminder

Please do not open or repair this device. Please do not use this device in a humid environment.

Wipe the device with a dry cloth

Warranty limitations

This limited warranty does not cover problems or damage caused by:

- (1) Accident, misuse, improper operation or any unauthorized repair, modification or disassembly;
- (2) Improper operation or maintenance, violation of product instructions or connection to inappropriate voltage sources during use;
- (3) Or use consumables not provided by our company (such as spare batteries), except where such restrictions are prohibited by applicable laws.

FCC Warning Statement

Changes or modifications not expressly approved by the party responsible for compliance could void the user's authority to operate the equipment. This equipment has been tested and found to comply with the limits for a Class B digital device, pursuant to Part 15 of the FCC Rules. These limits are designed to provide reasonable protection against harmful interference in a residential installation. This equipment generates uses and can radiate radio frequency energy and, if not installed and used in accordance with the instructions, may cause harmful interference to radio communications. However, there is no guarantee that interference will not occur in a particular installation. If this equipment does cause harmful interference to radio or television reception, which can be determined by turning the equipment off and on, the user is encouraged to try to correct the interference by one or more of the following measures:

- Reorient or relocate the receiving antenna.
- Increase the separation between the equipment and receiver.
- Connect the equipment into an outlet on a circuit different from that to which the receiver is connected.
- Consult the dealer or an experienced radio/TV technician for help.

FCC Radiation Exposure Statement

The device has been evaluated to meet general RF exposure requirement. The device can be used in portable exposure condition without restriction.

This device complies with Part 15 of the FCC Rules. Operation is subject to the following two conditions:

- (1) This device may not cause harmful interference.
- (2) This device must accept any interference received, including interference that may cause undesired operation.