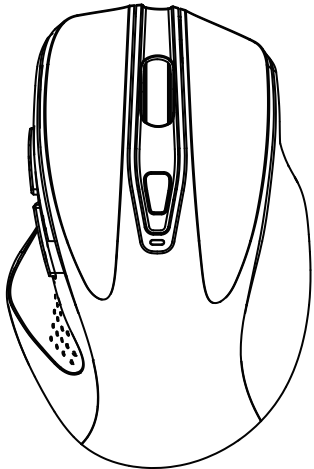
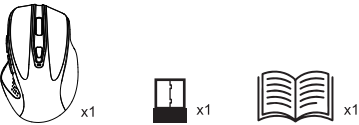


Wireless Mouse

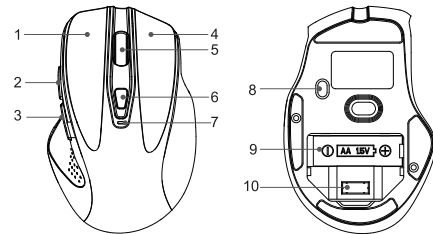


Model: G-528  
User Manual

Package Contents



Product Overview



- 1.Left Button

2.Forward Button

3.Back Button

4.Right Button

5.Scroll Wheel
- 6.DPI Button

7.Status Indicator Light

8.On/Off Switch

9.AA Battery Compartment

10.USB Receiver

Specifications

- 1.Battery Type: 1 AA Battery (Not included)

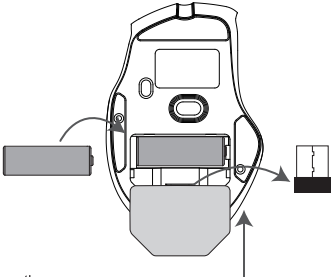
2.Operating Frequency: 2.4 GHz

3.Operating Voltage: 1.5V

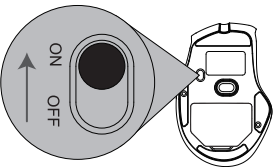
4.Operating Current: < 5mA

Connecting the Mouse

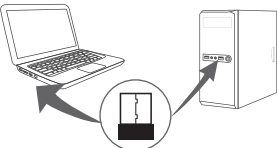
- 1.Insert one AA battery into the battery compartment. Remove the USB receiver and close the battery cover.



- 2.Turn on the mouse.



- 3.Plug the USB receiver into a USB-A port on your computer. The mouse will connect automatically and is ready to use.



Adjusting Mouse Sensitivity (DPI)

Press the DPI button to cycle through available DPI levels. The Status Indicator Light will flash corresponding number of times.

Low Battery Alert

When the battery of the mouse is low, the Status Indicator Light flashes quickly. Please replace the battery.

USB Receiver Reconnection

Connection issues may occur due to interference or environmental factors. If the mouse disconnects, follow the steps below to reconnect.

1. Unplug the USB receiver from your computer and ensure that the mouse has battery installed.

2. Turn on the mouse.

3. Press and hold the left, middle (scroll wheel), and right buttons simultaneously for 3 seconds. The DPI indicator will stay lit, confirming pairing mode is active.

4. Within 20 seconds, reinsert the USB receiver into your computer and keep the mouse within 30 cm (1 ft) of it.

5. The pairing of the mouse and receiver is successful when the indicator light turns off. The mouse is ready for use.

Correct Disposal of This Product

( Waste Electrical& Electronic Equipment )

This Marking shown on the product or its literature, indicate that it should not be disposed with other household wastes at the end of its working life.

To prevent possible harm to the environment or human health from uncontrolled waste disposal, please separate this from other types of wastes and recycle it responsibly to promote the sustainable reuse of material resources.Household user should contact either the retailer where they purchased this product, or their local government office, for details of where and how they can take this item for environmentally safe recycling.

Business users should contact their supplier and check the terms and conditions of the purchase contact. This product should not be mixed with other commercial wastes for disposal.

IMPORTANT SAFETY INSTRUCTIONS-CAREFULLY FOLLOW THESE INSTRUCTIONS.

1. RETAIN THESE INSTRUCTIONS - This sheet contains important safety and operating instructions.

2. Before using the product, read all instructions and caution markings on the product, accessories, and device.

3. This appliance is not intended for use by persons (including children) with reduced physical, sensory or mental capabilities, or lack of experience and knowledge, unless they have been given supervision or instruction concerning use of the appliance by a person responsible for their safety.

4. Children should be supervised to ensure that they do not play with the appliance.

5. Keep the product away from the fire to avoid an explosion.

6. For proper insertion, please observe polarity indicators (+/-).

7. Remove the batteries if the product is not going to be used for a long period.

8. Do not place the product in or near an inflammable, explosive, or hazardous object.

9. Do not disassemble the product. Disassembly may result in a risk of safety hazards.

10. Do not throw or shake the product.

11. Do not place the product in or near water, rain, excess moisture, or extreme heat.

SIMPLIFIED EU DECLARATION OF CONFORMITY

Hereby, Shenzhen Unichain Technology Co., Ltd. declares that the product type TK-MS056 is in compliance with Directive 2014/53/EU.  
The full text of the EU declaration of conformity is available at the following internet address: <https://teckneteu.com/>

FCC STATEMENT

This device complies with Part 15 of the FCC Rules. Operation is subject to the following two conditions:

(1) This device may not cause harmful interference, and (2) this device must accept any interference received, including interference that may cause undesired operation.

NOTE 1: This equipment has been tested and found to comply with the limits for a Class B digital device, pursuant to part 15 of the FCC Rules.

These limits are designed to provide reasonable protection against harmful interference in a residential installation. This equipment generates, uses and can radiate radio frequency energy and, if not installed and used in accordance with the instructions, may cause harmful interference to radio communications. However, there is no guarantee that interference will not occur in a particular installation. If this equipment does cause harmful interference to radio or television reception, which can be determined by turning the equipment off and on, the user is encouraged to try to correct the interference by one or more of the following measures:

- Reorient or relocate the receiving antenna.

- Increase the separation between the equipment and receiver.

-Connect the equipment into an outlet on a circuit different from that to which the receiver is connected.

-Consult the dealer or an experienced radio/TV technician for help.

NOTE 2: Any changes or modifications to this unit not expressly approved by the party responsible for compliance could void the user's authority to operate the equipment.

The device has been evaluated to meet general RF exposure requirement. The device can be used in portable exposure condition without restriction.