



## LT-AMD 01 LAPTOP

 Windows11 Pro

Quick Start Guide



Please scan the QR Code to register warranty on your product  
Alternatively, Please visit [flesip.com/puesto-de-trabajo-seguro](https://flesip.com/puesto-de-trabajo-seguro)

***flesip***


# Introduction

Thank you for your choosing the **LT-AMD 01** laptop. This guide serves to enable users to get to know and familiarize as soon as possible.

## Contents

<b>I. Precautions before Use.....</b>	<b>3</b>
<b>II. IMPORTANTE NOTICE.....</b>	<b>5</b>
<b>III. Key Layout and Definitions.....</b>	<b>6</b>
<b>IV. Descriptions of Ports.....</b>	<b>8</b>
<b>V. Introduction to Desktop.....</b>	<b>9</b>
1. Windows Desktop .....	9
2. Cortana .....	10
3. Introduction to Programs.....	10
4. Start Menu .....	12
5. Multitasking interface.....	13
<b>VI. Basic Operations.....</b>	<b>15</b>
1.Sleep, Shut down and Restart.....	15
<b>VII. FCC Statement.....</b>	<b>16</b>

# I. Precautions before Use

1. This production is suitable for use in non-tropic areas below 2,000 meters, and the mark  in the nameplate indicates the product is suitable for use in non-tropic areas.
2. Prevent the laptop from falling or being strongly impacted otherwise.
3. Do not use it for long periods of time in any environment where the air is too cold, too hot( $>35^{\circ}\text{C}$ ), too humid or with too much dust. Do not expose the Laptop to direct sunlight.
4. Avoid using it in a strong magnetic or strong static environment as much as possible.
5. Once any water or other liquid splashes onto the Laptop PC, turn off the device immediately, do not use it and contact support.
6. Do not clean the laptop with any detergent containing chemical elements or other liquid to avoid causing damage due to corrosion and becoming damp. If cleaning is necessary, clean it with dry soft cloth tissue paper.
7. Our company shall not bear responsibilities for loss or deletion of material inside the machine caused due to abnormal software, hardware operation, maintenance, or any other accident.

8. Please be sure to back up any important material regularly to avoid any loss.
9. Please do not disassemble the Laptop by yourself; this will void the warranty.
10. This product supports a vast majority of mainstream brands of WIFI HOTSPOT network cards. The cases for WIFI HOTSPOT may be different. It is suggested that you test it to confirm its compatibility before purchasing.
11. Quick Use Guide and the relevant software shall be updated at any time. If anything is found to be inconsistent with the Quick Use Guide, the material object shall prevail.
12. The battery is not user serviceable.

## **II. IMPORTANT NOTICE**

**Congratulations on your purchase of new LT-AMD 01 Laptop.**

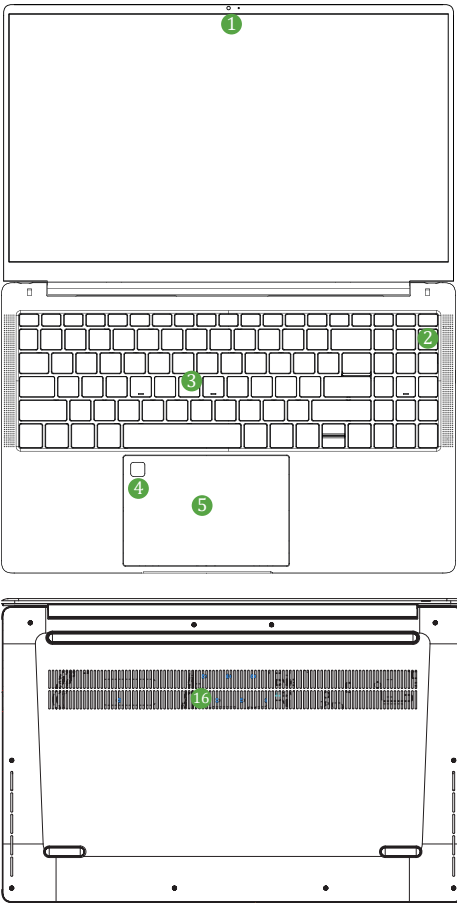
**Any problem with this purchase?**

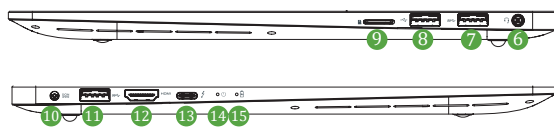
**Give us a chance to fix it!**

**Please send an email with your order ID and a description of your problem to [sac@flesip.com](mailto:sac@flesip.com)**

**One of our team members will get in touch with you.**

# III. Key Layout







## **IV. Descriptions of Ports**

*1-Webcam/Webcam LED/Internal Microphone*

*2- Power Key*

*3- Keyboard*

*4-Fingerprint Sensor*

*5-Touchpad*

*6- Combo Audio Port*

*7- USB 3.2 Gen 1*

*8-USB 2.0*

*9- Card Reader*

*10-Power Connector*

*11-USB 3.2 Gen 1*

*12-HDMI Connector*

*13-Thunderbolt4 (Type-C)*

*14- Power LED*

*15-Charge LED*

*16-Ventilation*

# V. Introduction to Desktop

## 1. Windows Desktop

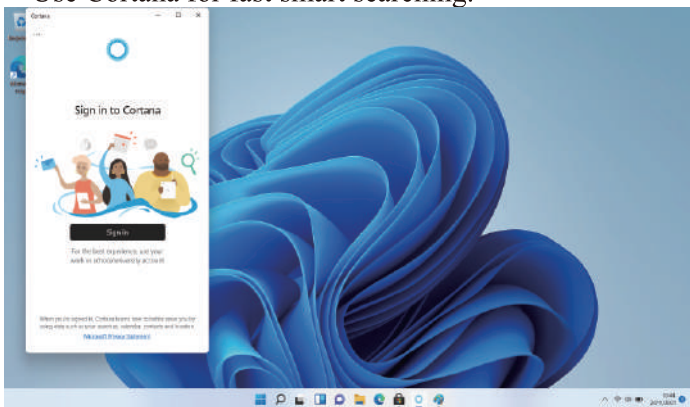
Windows 11 Pro start image: On the start screen, you can see many programs fixed to the taskbar.

We strongly suggest logging into your Microsoft Account to enable all the features Windows 11 Pro has to offer.



## 2. Cortana

Use Cortana for fast smart searching.

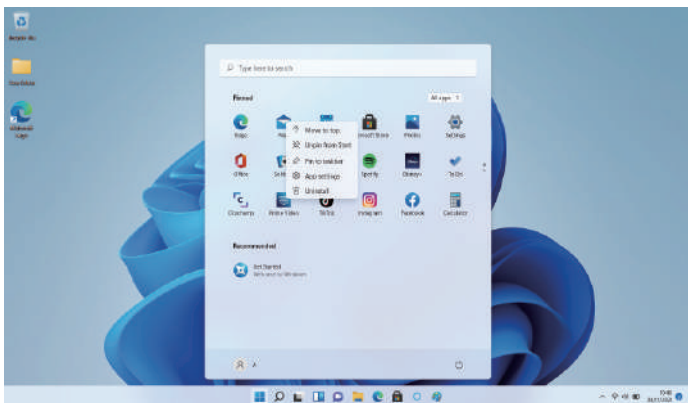


## 3. Introduction to Programs

Besides the application programs already fixed on the Taskbar, you can also fix other applications, programs, and folders to the Start Button/Taskbar.

**3.1.** If you want to pin more programs on the start interface, see the operation in the image below.

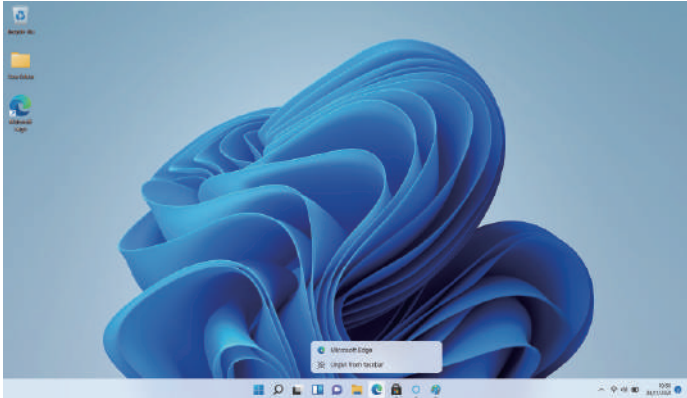
In the start menu, right-click the application you want to pin and select "Pin to Start". You can also drag the application onto the “start” screen, as follows:



Conversely, if you want to cancel or delete a certain application in the start screen,

Right-Click the application,

Click the “Unpin from Start”



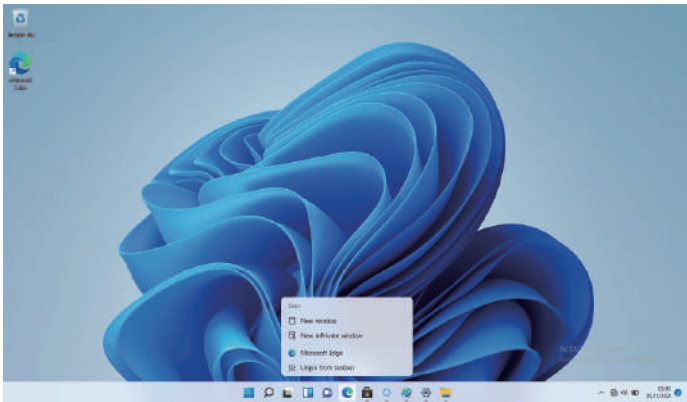
**3.2.** If you want to have more programs on the task bar, click the start menu, Right-Click the application, select more and ‘Pin to taskbar’



Conversely, if you want to cancel or delete a certain application in the task bar

Right-Click the application,

Click the “Unpin this program from task bar”.

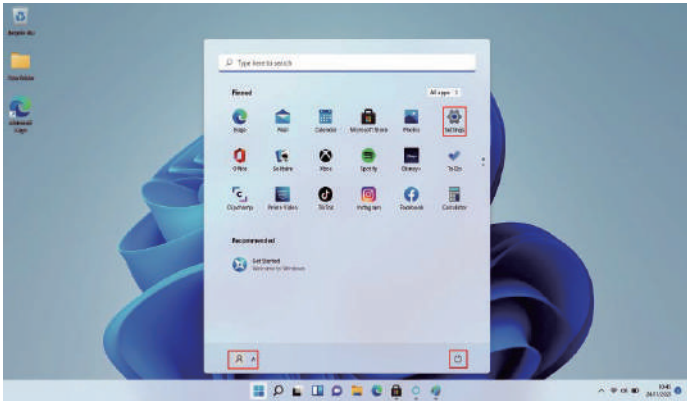


## 4. Start Menu

Start icon, Start Menu will display including: Start, Device, Setup, Share, and Search Program.



## 5. Multitasking interface



Power, Settings and Account.



Can Change account setting/Lock/Sign out.



Can let you set up the Laptop.

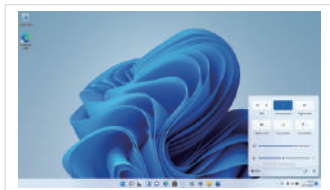


Can Sleep/Shut down/Restart the Laptop.


Search menu

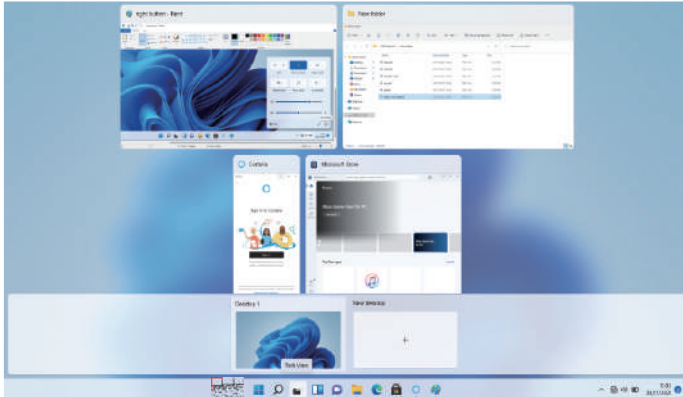


Action Center



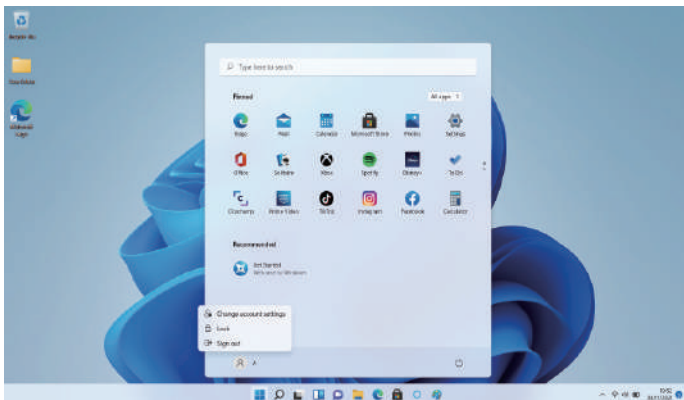
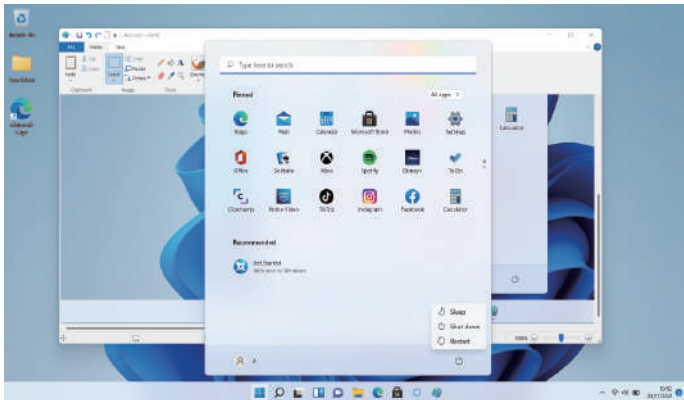
Action Center is a notification center that also allows for quick settings such as Wi-Fi, Bluetooth etc.

If you Click the Task View (or press the icon ), the running applications will be display. We can switch between and close different applications.



# VI. Basic Operations

## 1.Sleep, Shut down and Restart





When the notebook connecting to the adapter, if user does not have any operation over it, the screen will auto turn off after 10 minutes, if no further operations, the notebook will enter sleep mode after 15 minutes. While the notebook without adapter plug in, by using battery power, if user does not have any operation over it the screen will auto turn off after 10 minutes, if no further operations, the notebook will enter sleep mode after 15 minutes. To wake up from the sleep mode, user can click the left or right button of mouse, or by tapping any button.

Screen and sleep	
On battery power, turn off my screen after	10mins
When plugged in, turn off my screen after	10mins
On battery power, put my device to sleep after	15mins
When plugged in, put my device to deep after	15mins

## **VII. FCC Statement**

This device has been tested and found to comply with the limits for a Class B digital device, pursuant to part 15 of the FCC Rules. These limits are designed to provide reasonable protection against harmful interference in a residential installation. This equipment generates, uses and can radiate radio frequency energy and, if not installed and used in accordance with the instructions, may cause harmful interference to radio communications. However, there is no guarantee that interference will not occur in a particular installation. If this equipment does cause harmful interference to radio or television reception, which can be determined by turning the equipment off and on, the user is encouraged to try to correct the interference by one or more of the following measures:

- Reorient or relocate the receiving antenna.
- Increase the separation between the equipment and receiver.
- Connect the equipment into an outlet on a circuit different from that to which the receiver is connected.
- Consult the dealer or an experienced radio/TV technician for help.

Caution: Any changes or modifications to this device not explicitly approved by manufacturer could void your authority to operate this equipment.

This device complies with part 15 of the FCC Rules. Operation is subject to the following two conditions:

This device may not cause harmful interference, and (2) this device must accept any interference received, including interference that may cause undesired operation.

Specific Absorption Rate (SAR) information:

This device meets the government's requirements for exposure to radio waves. The guidelines are based on standards that were developed by independent scientific organizations through periodic and thorough evaluation of scientific studies. The standards include a substantial safety margin designed to assure the safety of all persons regardless of age or health. FCC RF Exposure Information and Statement the SAR limit of USA (FCC) is 1.6 W/kg averaged over one gram of tissue. Device types: This device has also been tested against this SAR limit.

This device was tested for typical body-worn operations with the back of the This device kept 0mm from the body. To maintain compliance with FCC RF exposure requirements, use accessories that maintain an 0mm separation distance between the user's body and the back of the This device. The use of belt clips, holsters and similar accessories should not contain metallic components in its assembly. The use of accessories that do not satisfy these requirements may not comply with FCC RF exposure requirements, and should be avoided.