



AQUAJET



290948USV02

USER MANUAL

Contents

| | | |
|-----|--------------------------------|---|
| I | Warning and Attention | 1 |
| II | Parts of AQUAJET | 2 |
| III | Technical Specifications | 2 |
| IV | AQUAJET In Use | 3 |
| V | Remote Control | 5 |
| VI | After Using AQUAJET | 6 |
| VII | Warranty Policy..... | 7 |

I. Warning and Attention



Ignoring the instructions in this manual or mishandling the AQUAJET could cause malfunction, operational problems to the device damage, or personal injury. ZRAY accepts no liability for any damage caused by actions that contradict this operating manual.

WARNING : For the purposes of recharging the battery, only use the detachable supply unit provided with this appliance.

1. Please fully charge the appliance before use.(The charge port is at the top of the propeller. The motor cover need to be twisted off when charging.)
2. Charging voltage is 25.2V. Do not overvoltage charge. Charging the remote control with the USB charge cable.
3. Please use the charger provided by the original factory.
4. Make sure the motor cover is tightly closed before use,as water can damage the machine.
5. Keep objects such as hand,hair and clothing away from the propeller.If something gets stuck in the propeller, please make sure the propeller is closed before attempting to move the jammed thing.
6. Do not disassemble the machine without permission to avoid damage.
7. Do not put the appliance into the fire.
8. Do not place the appliance in the environment with high temperature above 60°C. Do not use the appliance in the water with Max. temperature above 35°C.
9. This appliance can be used by children aged from 16 years and above and persons with reduced physical, sensory or mental capabilities or lack of experience and knowledge if they have been given supervision or instruction concerning use of the appliance in a safe way and understand the hazards involved. Children shall not play with the appliance. Cleaning and user maintenance shall not be made by children without supervision.
10. The appliance is only to be used with the power supply unit provided with the appliance.
11. This appliance contains batteries that are non-replaceable.
12. The light on the charger will be green when the battery is full.
13. If it has not been used for a long time,please charge it for one hour and save it.
14. Do not use the appliance while tired or under the influence of alcohol,drugs or medication.A moment of inattention may result in serious personal injury.
15. Using the appliance during pregnancy is not allowed.
16. Rinse with fresh water after each use,especially after use in salt water.
17. Always charge the battery on a non-flammable base.
18. The battery must be removed from the appliance before it is scrapped.
19. The appliance must be disconnected from the supply mains when removing the battery.
20. The battery is to be disposed of safely.

FCC CAUTION:

This device complies with part 15 of the FCC Rules. Operation is subject to the following two conditions:

- (1) This device may not cause harmful interference, and
- (2) this device must accept any interference received, including interference that may cause undesired operation.

Any changes or modifications not expressly approved by the party responsible for compliance could void the user's authority to operate the equipment.

This equipment has been tested and found to comply with the limits for a Class B digital device, pursuant to part 15 of the FCC Rules. These limits are designed to provide reasonable protection against harmful interference in a residential installation. This equipment generates, uses and can radiate radio frequency energy and, if not installed and used in accordance with the instructions, may cause harmful interference to radio communications. However, there is no guarantee that interference will not occur in a particular installation. If this equipment does cause harmful interference to radio or television reception, which can be determined by turning the equipment off and on, the user is encouraged to try to correct the interference by one or more of the following measures:

- Reorient or relocate the receiving antenna.
- Increase the separation between the equipment and receiver.
- Connect the equipment into an outlet on a circuit different from that to which the receiver is connected.
- Consult the dealer or an experienced radio/TV technician for help.

The equipment complies with FCC radiation exposure limits set forth for an uncontrolled environment.

This transmitter must not be co-located or operating in conjunction with any other antenna or transmitter.

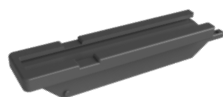
II. Parts of AQUAJET



Propeller x 1



Remote Control x 1



US Fin Adaptor x 1



Propeller Charge Unit x 1



USB Charge Cable x 1

III Technical Specifications

| | |
|-----------------------|---|
| <i>Item No</i> | 290948USV02 |
| <i>Max Speed</i> | 7 km / h |
| <i>Battery</i> | Lithium-ion cells. 22.2V 7500mAh |
| <i>Charger</i> | Model no.: FX65C-252200Z Input : 100-240V 50 / 60Hz , 1.5A Max Output : 25.2V DC 2A |
| <i>Runtime</i> | 60 minutes maximum |
| <i>Remote Control</i> | 4 button control |

IV . AQUAJET In Use

1.Preparing the AQUAJET

a.Fully charging the propeller before use



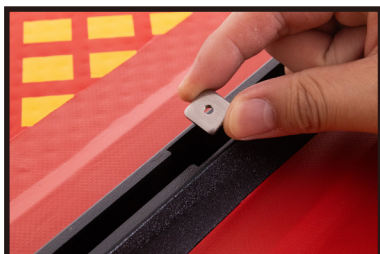
b.Fully charging the remote control for use



c.Install the propeller on a SUP



d.Install AQUAJET on the SUP with US Fin





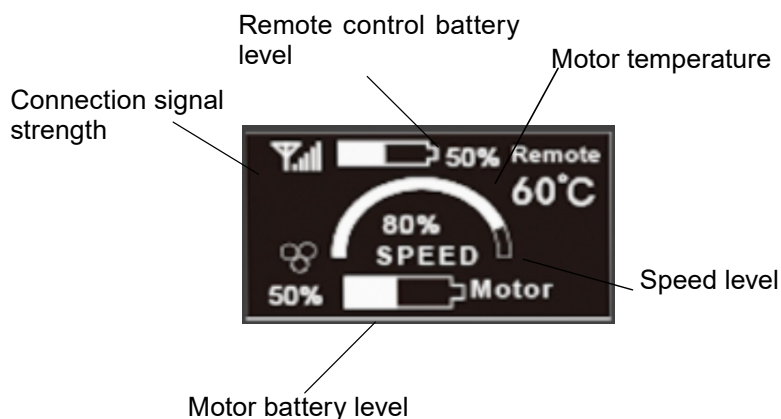
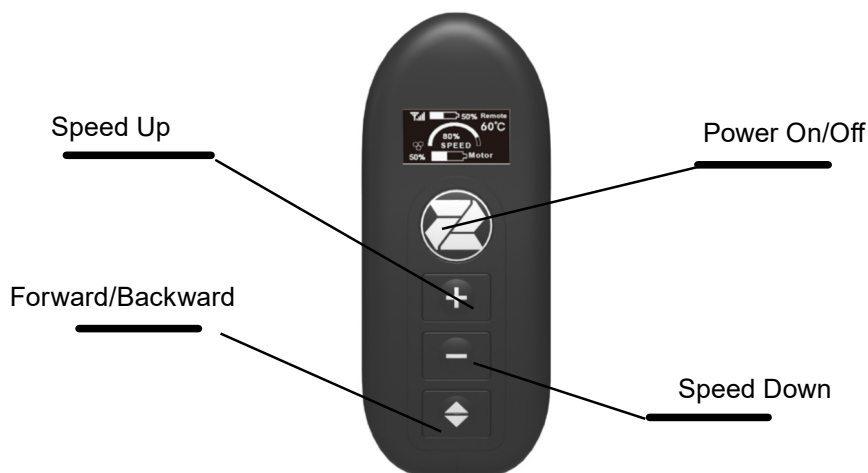
e. Check the pairing of the remote control with AQUAJET



2.Remote control pairing steps:

- 1.Connect the charger to the power source and quickly plug and unplug it. At this time, you will hear a beep from AQUAJET.
- 2.After hearing the sound, press the power button on the remote control first, and then press the forward button to complete the pairing.
- 3.After unplugging the charger, restart and test whether the pairing is successful.

V.Remote control



Remote Control Operation Instructions

1. Power On/Off: Press the power switch key when no operation is performed, and the display screen will light up. Pressing the speed up or speed down key at this time will display the status of the remote control and motor, as well as the battery level. While the machine is in operation, holding down the power switch key will stop the machine.
2. Forward/Backward: After pressing the power switch key and the display screen lights up, press the forward/backward key, and the boat will move forward. If you press the button again while the boat is moving forward, the boat will reverse.
3. Speed Up/Down: In the forward or backward state, you can adjust the motor speed by pressing the speed up or speed down key. Each press increases or decreases the speed adjustment by 10%.
4. There will be a 5 seconds interval between each control action.

VI. After Using AQUAJET

1.



Rinse the AQUAJET with fresh water after using.

2.



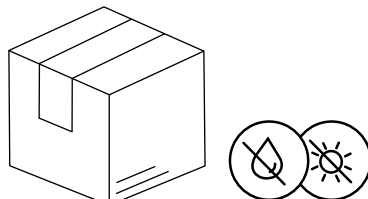
Try to keep the AQUAJET in a shadowy place.

3.



Wait until the AQUAJET is dry.

4.



Store the AQUAJET in a dry and shadowy place .

VII. Warranty Policy

1.WARRANTY PROCESS

Adhering to the following warranty process is a prerequisite to the satisfaction of any warranty claims.

Before dispatching any apparently faulty goods , it is required to coordinate the delivery with ZARY. Please open a ticket in our support system : [https:// service.zraysports.com](https://service.zraysports.com) or contact us via email under service@zraysports.com and describe the issue with your products. Subsequently ,our support team will get in touch with you for further steps.

Please understand that we are unable to deal with products of which we have not been notified and will therefore refuse to accept delivery.

2.Disclaimer

AQUAJET entitled to refuse a warranty claim in case

- a.the product has been used improperly.
- b.the warranty ticket was not correctly submitted (in particular failure to contact AQUAJET before sending back goods , refer to warranty process)
- c.the instructions in the manual were not observed ,
- d.the product was in any way altered or modified or parts and accessories were added that are not expressly permitted or recommended by AQUAJET, previous services or repairs aere not carried out by firms authorized by AQUAJET, or n on-original parts were used.

As well as the rights arising from this warranty,the customer also has legal warranty claim rights arising from the purchase contract with the dealer that are not hampered by this warranty.

Please assure that your AQUAJET is always locked to a sup while using otherwise we are not able to provide any warranty.

Thank you for choosing ZRAY!

If you have any questions about the products and your experience, please contact our customer service center.

For instruction videos, please visit our YouTube channel @zraysports

You may also find FAQs and instruction manuals at
<https://service.zraysport.com>

Follow us on Facebook, Instagram, and YouTube to share your joys and great experience with your products #ZRAY.

You can also email us at service@zraysport.com to let us know how we can serve you better by improving our products!



JIANGSU JILONG SPORT AND LEISURE PRODUCTS
CO.,LTD., N0.1 Industrial Area South Zhongchen Road
Zhongyang Town Suqian, Jiangsu, China

