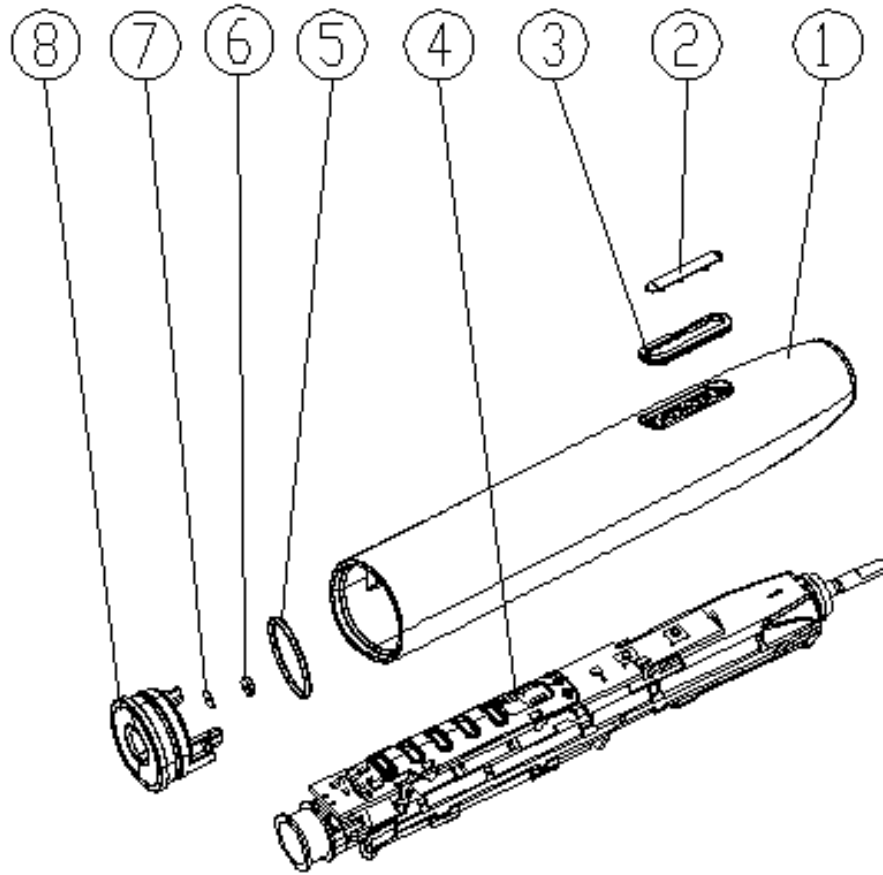
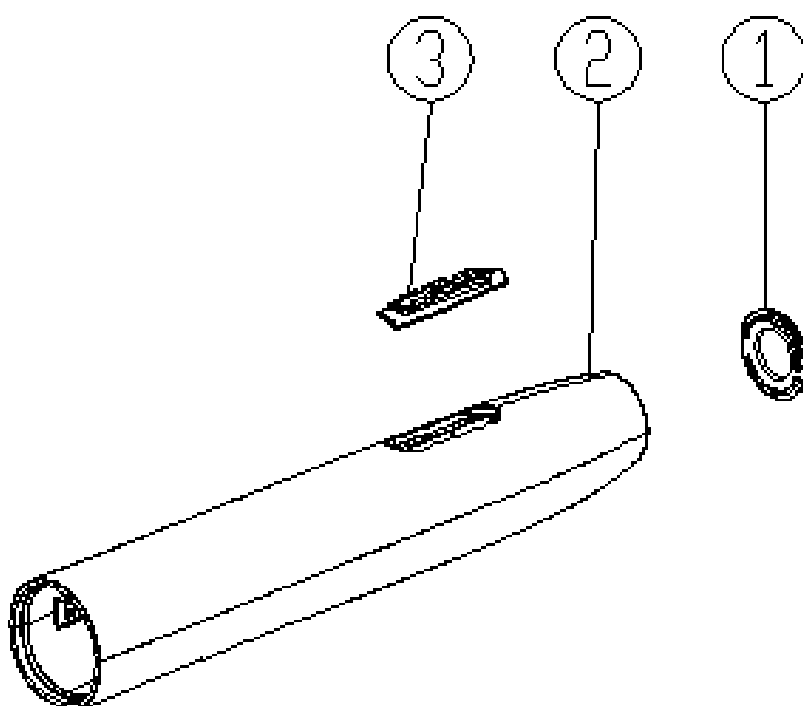


Electric toothbrush part

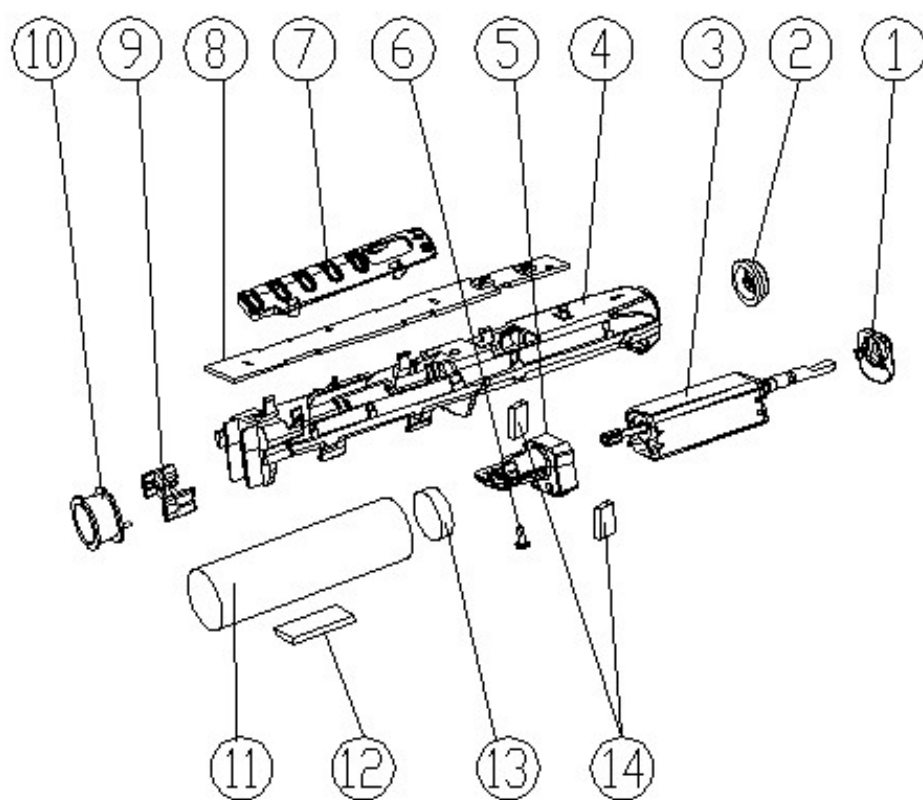
Model: SG-2757



Serial Number	Name	Material	remarks
1	Main body component		
2	Button	ABS	
3	Button ring	ABS	
4	Bracket assembly		
5	O-ring	Silica gel	
6	Breather valve	ABS	
7	Permeable membrane		
8	Lower cap	PC	

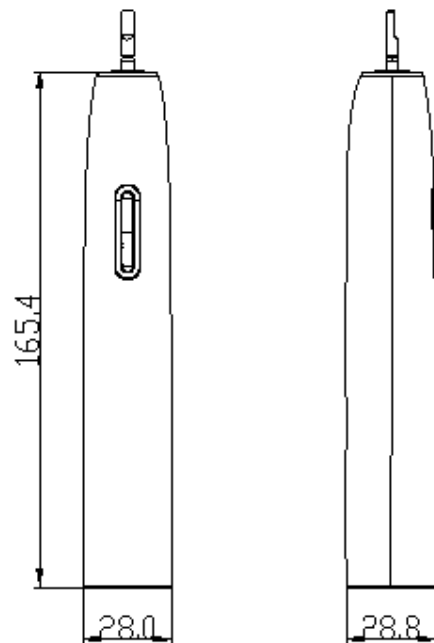


Serial Number	Name	Material	remarks
1	Decorative ring	ABS	
2	Main body	ABS	
3	encapsulating	TPE	



Serial Number	Name	Material	remarks
---------------	------	----------	---------

1	Presoft gel	Silica gel	
2	Waterproof ring	Silica gel	
3	Electric machine		
4	support	POM	
5	attachment	POM	
6	screw		
7	Light shade	ABS	
8	Circuit board		
9	Coil holder	PC	
10	coil	PC	
11	battery		
12	foam		
13	foam		
14	foam		



Item	Specifications	Requirements
1	Product size	28.0*28.0*165.4mm (see attached picture)
2	weight	136g
Note: 1. Product size tolerance: $\pm 0.5\text{mm}$ 2. Product size does not include accessories 3. Product weight does not include accessories		

1. Function Description

1.1 Waterproof design.

1.2 The brush head can be replaced.

1.3 Gear memory function.

1.4 Periodic reminder function.

1.5 Charging mode: Wireless charging (WX-1).

1.6 Battery overcharge and overdischarge protection.

1.7 Power indicator.

1.8 Anti-splash function.

1.9 Pressure sensing function.

2. Usage method

2.1 Normal operation:

2.1.1 Turning the machine on and off: Long press the upper button to turn on the product, and long press the upper button again to turn off the product. (Long press for about 1 second)

2.1.2 Mode switching: After the product is turned on, the upper button is triggered to switch modes. The mode switching sequence is mode 1 → Mode 2 → Mode 3 → Mode 4 → Mode 5 → Mode 1.....

2.1.3 Intensity switching: When the product is on, press the button to switch the intensity of the current mode. The switching sequence of gear intensity is first gear → second gear → third gear → first gear.....

2.1.4 Overpressure alarm: After the product is turned on, the toothbrush vibration becomes weak after excessive force is applied at the brush head, and all gear lights and mode lights blink rapidly at an interval of 0.5 seconds, and the alarm is stopped after being lifted.

2.1.5 Anti-splash function: After the product is opened, the motor will start slowly, the time is 3 seconds, and there is a key trigger during the slow start, which will skip the slow start and respond to the shift operation.

2. Usage method

2.1 Normal operation:

2.1.1 Turning the machine on and off: Long press the upper button to turn on the product, and long press the upper button again to turn off the product. (Long press for about 1 second)

2.1.2 Mode switching: After the product is turned on, the upper button is triggered to switch modes. The mode switching sequence is mode 1 → Mode 2 → Mode 3 → Mode 4 → Mode 5 → Mode 1.....

2.1.3 Intensity switching: When the product is on, press the button to switch the intensity of the current mode. The switching sequence of gear intensity is first gear → second gear → third gear → first gear.....

2.1.4 Overpressure alarm: After the product is turned on, the toothbrush vibration becomes weak after excessive force is applied at the brush head, and all gear lights

and mode lights blink rapidly at an interval of 0.5 seconds, and the alarm is stopped after being lifted.

2.1.5 Anti-splash function: After the product is opened, the motor will start slowly, the time is 3 seconds, and there is a key trigger during the slow start, which will skip the slow start and respond to the shift operation.

2.3 Power indicator:

Indication mode	Charge state	Power indicates when and how to turn on
Charging indicator light is not on, the product does not work	Charge less than 10%	Opening time: after shutdown. Open mode: According to the remaining battery power, indicate 10 seconds.
After shutdown, the five mode indicators blink for 1 second	Electricity is about 10%-20%	
After shutdown, the two modes are on	Electricity is about 20%-40%	
After shutdown, the three modes light up	The electricity is about 40%-60%	
After shutdown, the four modes light up	Electricity is about 60%-80%	
Five modes light up after shutdown	Charge greater than 80%	

2.4 Charge management: When the 5 mode indicators blink or the product cannot be started normally after use, it indicates that the battery power is insufficient and the product needs to be charged. When charging, the product can be charged by placing it on the charging base of the power supply.

2.5 Charging Instructions:

Indication mode	Charge state
The charging indicator light is off	Charge less than 10%
Gear light from bottom to top, cycle indication.	Electricity is about 10%-90%
The charging indicator light is off	Electricity is about 90%-100%

2.6 Abnormal Indicator:

Exception name	Indication mode	Response condition	Recommended action
Overvoltage alarm	Light position light and mode light white light flashing, motor vibration becomes weak	Brush head press too much	Brush less

3. Precautions

3.1 First use If the product does not work, it may be caused by insufficient battery power, please charge the product.

3.2 The indicator light may not be on 5 minutes before charging if it is used for the first time or not used for a long time, which is a normal phenomenon caused by insufficient battery power.

3.3 If the product does not vibrate or vibrates weakly, it may be caused by insufficient battery power, please charge it in time.

3.4 If the bristles are deformed or used for more than three months, please replace the toothbrush head in time.

3.5 Do not place the product in a place where it is easy to fall.

3.6 Install the brush head as instructed; otherwise, the product may be damaged.

3.7 Before replacing a new brush head, clean the installation position of the brush head; otherwise, it may be difficult to install the brush head.

4. Technical parameters

4.1 Rated operating voltage: DC3.7V

4.2 Rated working power: 2W

4.3 Rated input voltage: The toothbrush part is not nominal, and the base has a nominal rated input voltage

4.4 Rated input power: The toothbrush part is not nominal, and the base has a nominal rated input power

4.5 Static consumption: $\leq 0.05\text{mA}$

4.6 Timing time: Reference gear description, error $\pm 5\%$

4.7 Battery type: 3.7V, 1500mAh (5.55Wh), 18500 cylindrical lithium-ion battery

4.8 Battery life: about 70 days (twice a day, two minutes each time, @ mode 5 under the third gear, with SG-C119 brush head)

4.9 Working ring mirror: 5-40°C. (Nominal method of household medical products)

4.10 Motor life: ≥ 150 hours

4.11 Vibration frequency: reference gear introduction, error $\pm 5\%$

4.12 Waterproof rating: IPX7

4.13 Noise: $\leq 65\text{dB}$ (test under ambient noise less than 50dB, full charge test, test distance 10cm)

4.14 Storage temperature: Low temperature: -30°C, 4 hours; High temperature: 60°C, humidity 90%, 4 hours

4.15 Adaptation Product Description: Suitable for C series brush head and special WX-1 charging base (such as SG-4033A, SG-412).

4.16 Overvoltage detection: 300-500g

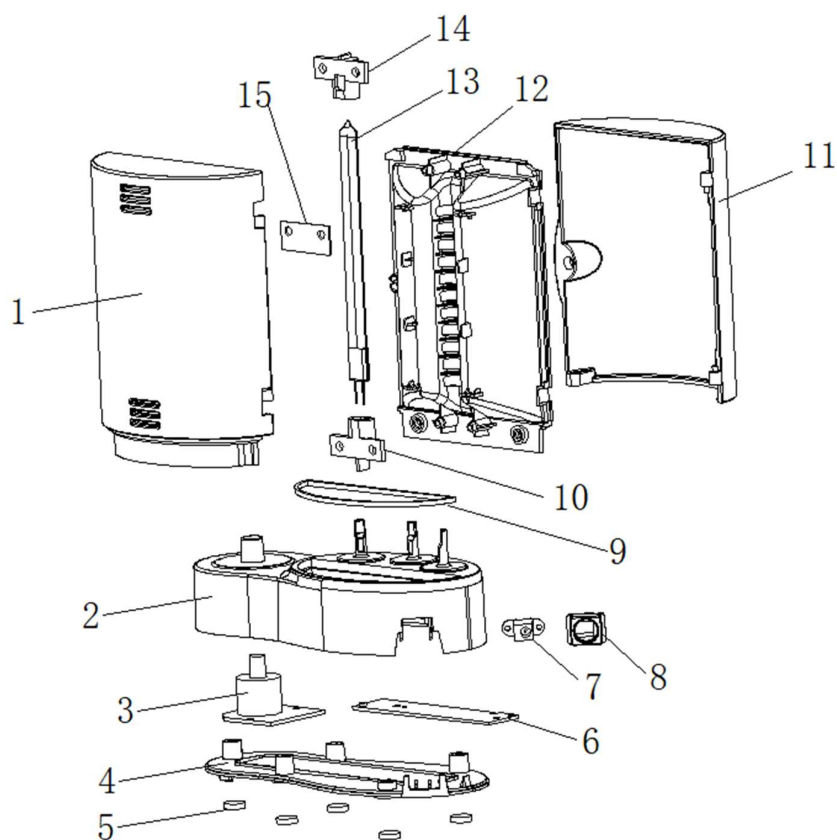
4.17 Charging time: The following table

Charging base model Charging time

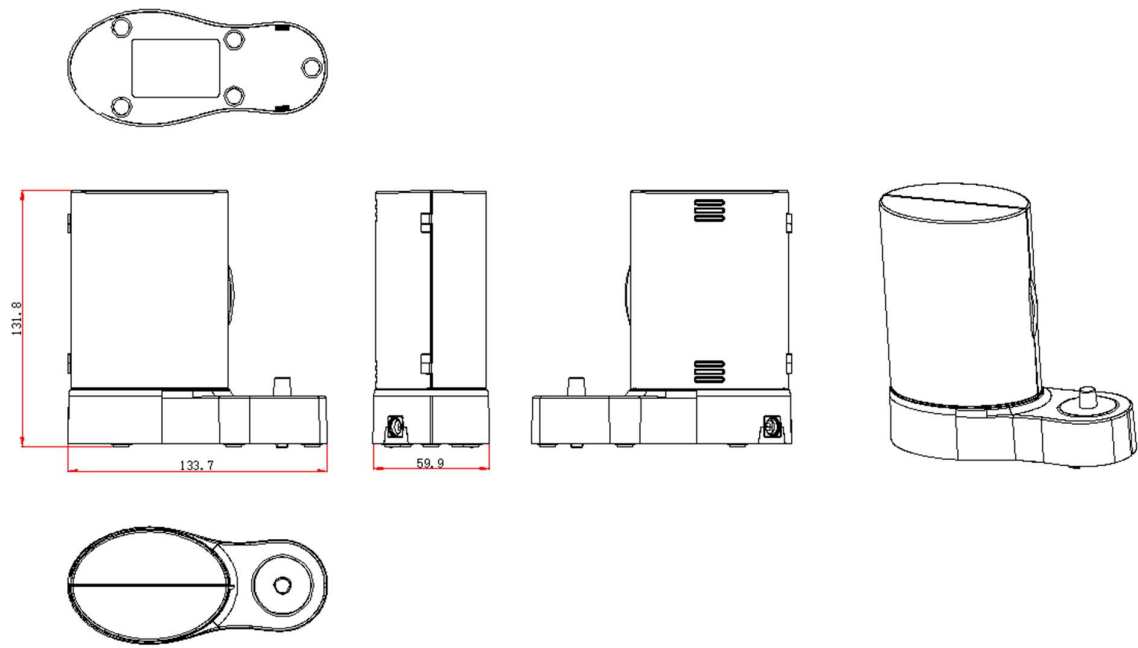
SG-4033A approx. 16 hours

Charging base section

Model: SG-4033



Serial Number	Name	Material	remarks
1	Rear case	PC/ABS	
2	On base	PC/ABS	
3	PCB		
4	Under base	PC/ABS	
5	Silicone foam	Silica gel	
6	PCB		
7	socket		
8	Waterproof soft adhesive	Silica gel	
9	Waterproof ring	Silica gel	
10	Light tube holster	Silica gel	
11	Face cover	Transparent ABS	
12	reflector	ABS	
13	Lamp tube		
14	Light tube holster	Silica gel	
15	PCB	PC/ABS	



Serial Number	Project	Specification requirements
1	Product size	133.7*59.9*131.8mm (see attached figure)
2	weight	160g
Note: 1. Product size tolerance: $\pm 0.5\text{mm}$ 2. Product size does not include accessories 1. 3. Product weight does not include accessories		

1. Function Description

1.1 Ultra-strong UV fast sterilization up to 99.9%(including SARS and H1N1).

1.2 Safe starting design, can prevent UV damage to the human body.

1.3 Long-life lamps do not need to be replaced.

1.4 Timing Function.

1.5 Anti-slip function.

1.6 Three toothbrush heads can be disinfected simultaneously.

1.7 Wireless charging function.

2. Usage method

2.1 Turn on disinfection: Plug in the adapter for power supply, open the face cover, put the toothbrush head in and close the top cover to start disinfection (the bristles face the lamp).

2.2 Close disinfection: open the cover, the disinfection is terminated; The disinfection will stop automatically when the time is up.

2.3 Wireless charging: The product plug in the adapter power supply, the toothbrush can be plugged into the pile to charge the toothbrush, the end of the charge will automatically stop charging.

3. Precautions

3.1 If the product does not work for the first time, the socket may be in poor contact, please replace the socket and try again.

3.2 Stop using the service if any exception is found.

3.3 Due to the production of ozone during the working process, ozone will have a light odor, which is a normal phenomenon.

3.4 Before disinfection, please shake off the water on the brush head and then disinfect it, so that the disinfection effect is better.

3.5 Wring out the cloth when scrubbing the product; otherwise, the product may be damaged by moisture.

3.6 Do not place the product in a humid place; otherwise, the product may be damaged by moisture.

3.7 Do not place the product in a place where it can be easily dropped.

4. Technical parameters

4.1 Rated operating voltage: DC5V

4.2 Rated working power: $\leq 3.5W$

4.3 Rated input voltage: DC5V

4.4 Rated input power: $\leq 3.5W$

4.5 Static consumption: $\leq 0.5W$

4.6 Timing: 10 minutes

4.7 Working ring mirror: 5-40°C. (Nominal method of household medical products)

4.8 Lamp life: ≥ 8000 hours

4.9 UV intensity: $\geq 2500 \mu W/cm^2$ (@254nm, close to the lamp test)

4.10 Waterproof rating: IPX0

4.11 Ozone leakage concentration: $< 0.05ppm$

4.12 Storage temperature: Low temperature: -30°C, 4 hours; High temperature: 60°C, humidity 90%, 4 hours