

PRODUCT SPECIFICATION

Customer:

Customer's part number:

Product description: 2.4G PCB Antenna

Uni Link's part number: MS-2.4G-TP1

Issue Date: 20012-12-30

Note: 2400-2500 \pm 3 MHz

Application and Features

Applications :

- 1: 2.4G ISM band applications
- 2: ISM, RFID applications
- 3: Remote antenna location for better reception

Features :

- 1: Compact size
- 2: Mounting foam tape on back
- 3: Indoor or outdoor use

I. Contents

1、 SPECIFICATIONS

2、 PICTURE

3、 DRAWING

4、 MECHANICAL CHARACTERISTICS

5、 DURABILITY

6、 RETURN LOSS

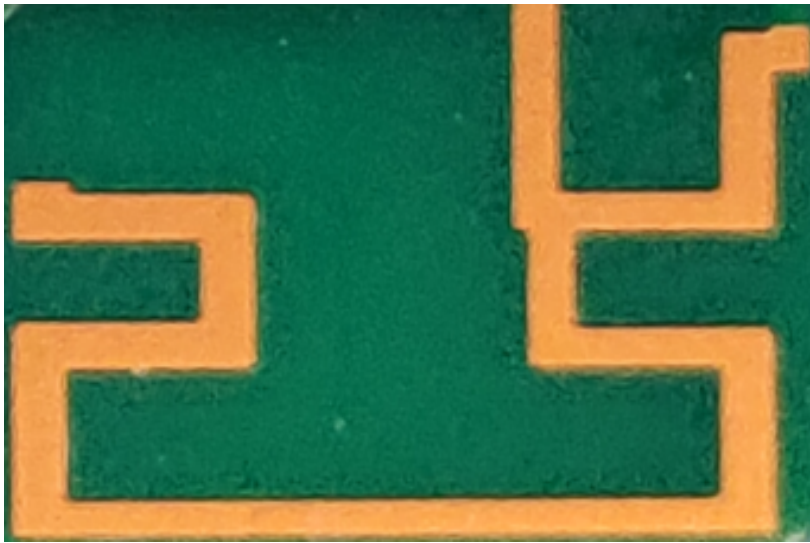
7、 VSWR

8、 RF RADIATION PATTERN

1、SPECIFICATIONS

Electrical Specifications	
Frequency Range (MHz)	2400-2500
Bandwidth (MHz)	100
Input Impedance (Ω)	50
V.S.W.R	≤ 1.5
Antenna Gain(dBi)	2
Max Input Power (w)	50
Mechanical Specifications	
Antenna Length (mm)	
Connect Type	
Radome Color	

2、 PICTURE



Width: 7mm

Length: 11mm

3、DRAWING

4、MECHANICAL CHARACTERISTICS

1	BENDING TEST	Put load 120g to 30cm cable from the end of the connector, fixed joints, swaying test at an angle of 60 degrees , test features after 1000 times	after 1000 times test no visible damage
---	-----------------	--	---

2	STRENG TEST	Put 15pounds static load to the end of the cable continue 1 minute	After test no visible damage
3	VIBRATION TEST	the X-axis direction for 120 minutes, and the Y-axis direction 120 minutes, the Z-axis direction 240 minutes as vibration testing of 1.1mm amplitude and 33.30Hz/sec of frequency	After test no visible damage

5、DURABILITY

1	SAIT SPRAY TEST	<p>Saline spray test: according to GB1266-86 standard</p> <p>Distilled water: a single distillation</p> <p>PH6.5 ~ 7</p> <p>Spray volume: 1.4me80cm²/h</p> <p>Compressed air pressure: 1Kgf/cm²</p> <p>Test relative degree: 98°</p> <p>Temperature: 45° ~47°</p> <p>Pressure temperature: 35°</p> <p>Test time: 96hr</p>	All characteristic range is 30% of the initial value
2	HEAT TEST	85+2°C for 96 hours, after keep in normal condition for 30min the to test.	
3	HUMIDITY TEST	40+2°C 90-95%RH for 96hours, after keep in normal condition for 30min the to test.	
4	COLD TEST	-40+2°C for 96hours, after keep in normal condition for 30min the to test.	

7、VSWR

