



HDwificamPro

Instruction Manual

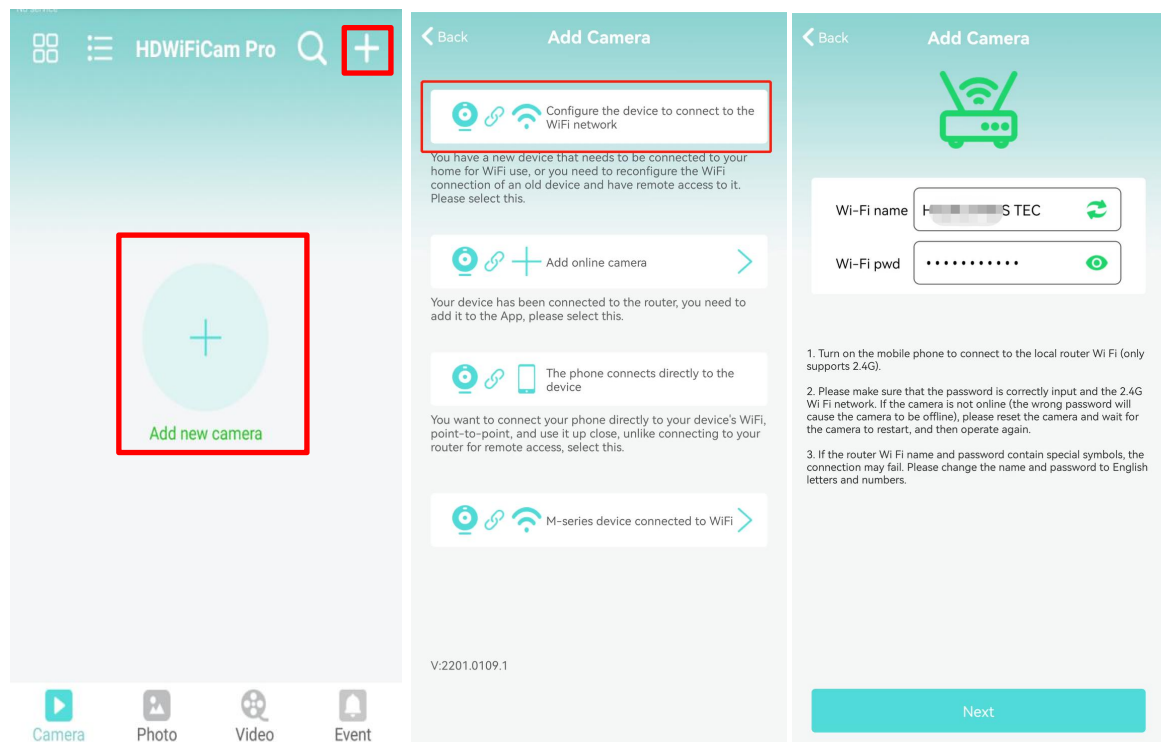
App Installation on smart phones

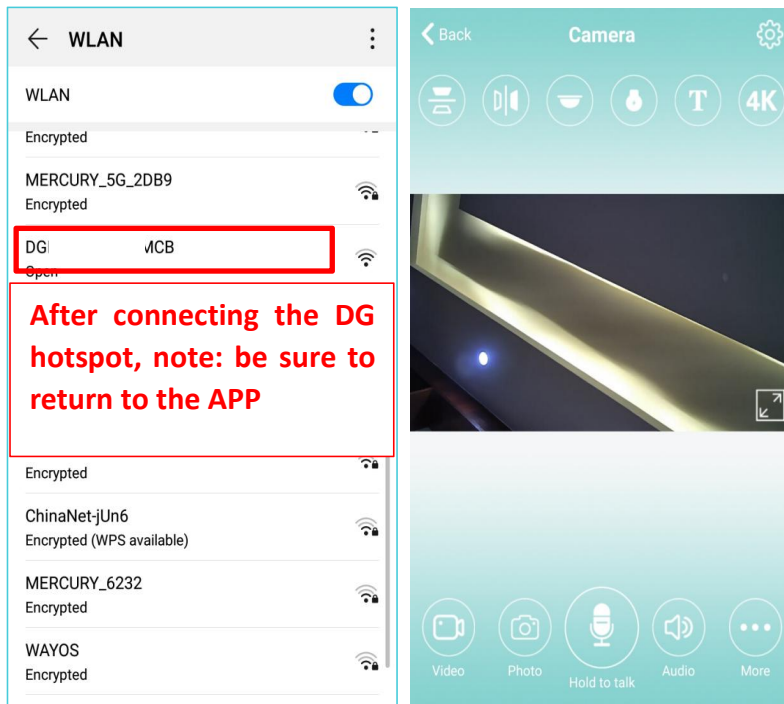
1、Download and install HDwificampro in the Apple Store for the IOS system and GooglePlay for the Android system. For your convenience, please scan the QR code below to download and install HDwificampro. If your device can't connect to GooglePlay, please scan the APK QR code



below to download and install HDwificampro.

2、Click "+" to configure a new camera and connect it to WiFi. **Note: When using the camera for the first time, please connect the smart phone to the 2.4 G WiFi router first. Then configure the camera and connect it to WiFi according to the following steps.**





FAQs

Q1: Why can't I search and detect cameras/configure networks with the APP?

A: Please confirm that your device is connected normally and check whether the APP permission is restricted.

Q2: Why does the camera always require the username and the password, or prompt an incorrect user?

A: The default password for the camera is 6666. If you forget the username or password, you can restore the camera to the factory settings, thus obtaining the default username and password.

Q3: How can I restore my camera to the factory settings?

A: Please press the reset button of the camera for about 5 seconds until the camera restarts.

Q4: Why is the image blurred?

A: Remove the protective film of the lens. If it is still blurred, please rotate the lens of the camera and focus it. After that, you can get a clear image.

Note: This equipment has been tested and found to comply with the limits for a Class B digital device, pursuant to part 15 of the FCC Rules. These limits are designed to provide reasonable protection against harmful interference in a residential installation. This equipment generates uses and can radiate radio frequency energy and, if not installed and used in accordance with the instructions, may cause harmful interference to radio communications. However, there is no guarantee that interference will not occur in a particular installation. If this equipment does cause harmful interference to radio or television reception, which can be determined by turning the equipment off and on, the user is encouraged to try to correct the interference by one or more of the following measures:

- Reorient or relocate the receiving antenna.
- Increase the separation between the equipment and receiver.
- Connect the equipment into an outlet on a circuit different from that to which the receiver is connected.
- Consult the dealer or an experienced radio/TV technician for help.

This device complies with part 15 of the FCC Rules. Operation is subject to the following two conditions: (1) This device may not cause harmful interference, and (2) this device must accept any interference received, including interference that may cause undesired operation.

The device has been evaluated to meet general RF exposure requirement. The device can be used in portable exposure condition without restriction.

NOTE : Any changes or modifications to this unit not expressly approved by the party responsible for compliance could void the user's authority to operate the equipment.