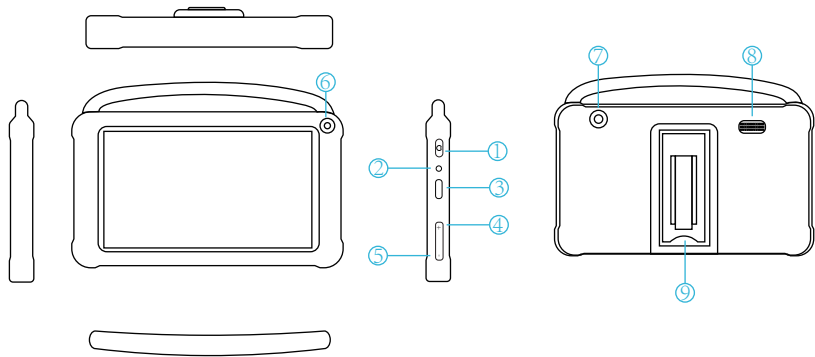


AT71K

User manual

SPECIFICATION

Size	7inch	Connection	Wifi
CPU	SC7731E	RAM	2GB
Display/ Resolution	1024*600	Storage	16GB
Front-facing Camera	2.0MP	Network	BT/ 802.11 b/g/n
Rear Camera	5.0MP	Power Supply	DC 5V/2A
Battery	3000mAh	Touch	Multi-touch
Operating System	Android 10.0	Ports	Type-C



1.Power On / Off

2.Headphone jack

3.Type-C

4.Volume+

5.Volume-

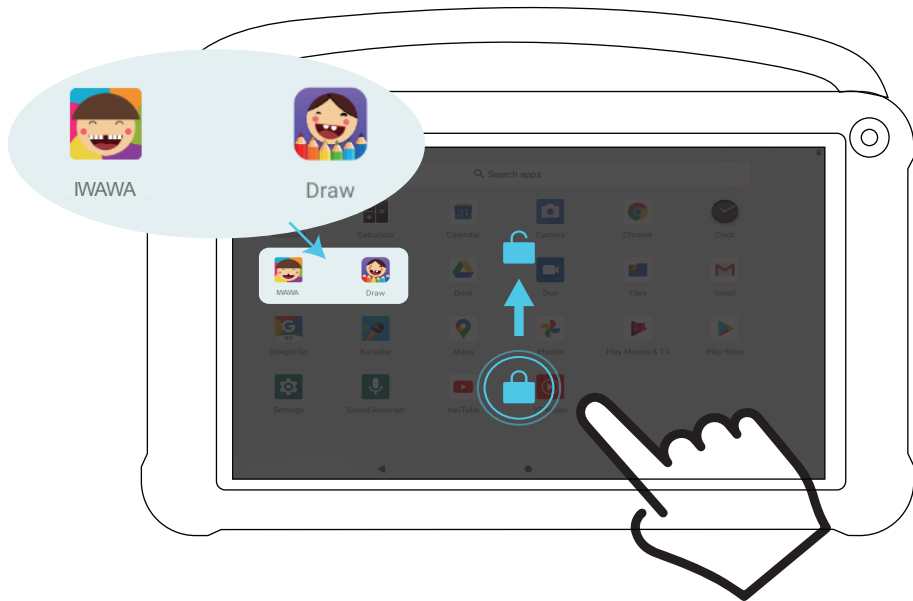
6.Front Camera

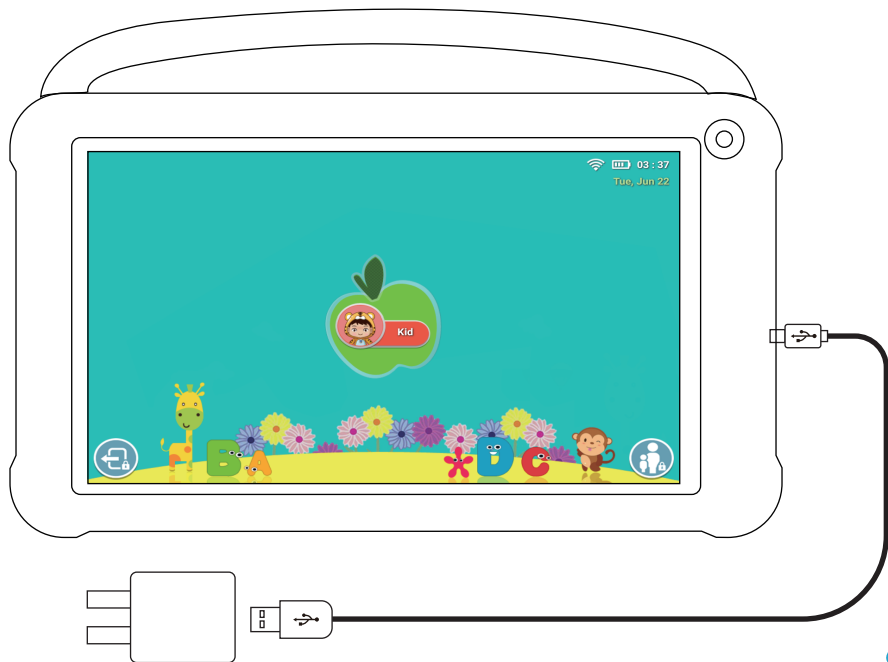
7.Back Camera

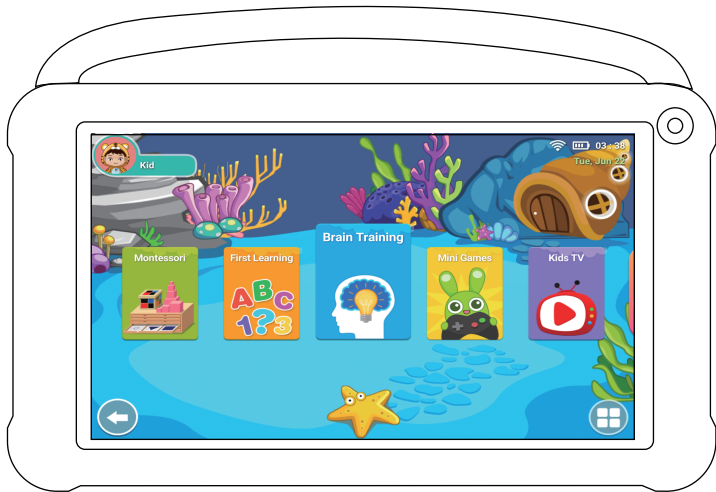
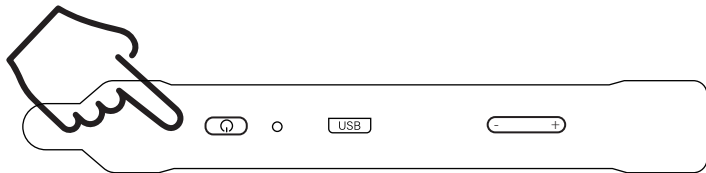
8.Speaker

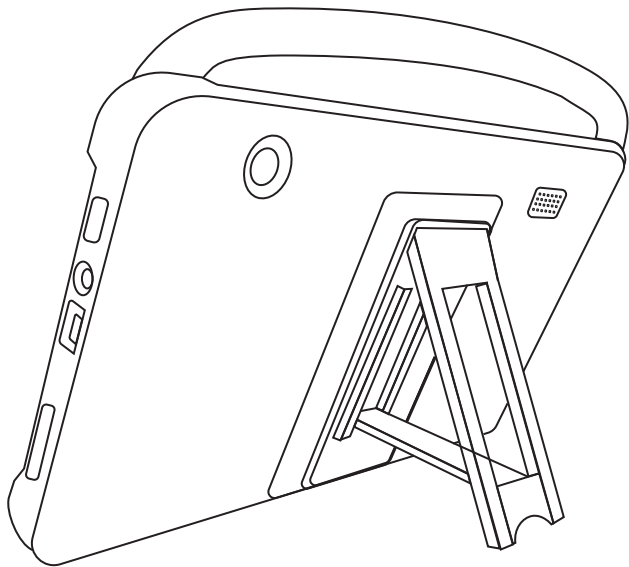
9.Holder

Kids model









* Android is a trademark of Google LLC.

Warning:

Changes or modifications to this unit not expressly approved by the party responsible for compliance could void the user's authority to operate the equipment.

NOTE:

This device complies with part 15 of the FCC Rules. Operation is subject to the following two conditions: (1) This device may not cause harmful interference, and (2) this device must accept any interference received, including interference that may cause undesired operation.

FCC Statement:

This equipment has been tested and found to comply with the limits for a Class B digital device, pursuant to part 15 of the FCC Rules. These limits are designed to provide reasonable protection against harmful interference in a residential installation. This equipment generates, uses and can radiate radio frequency energy and, if not installed and used in accordance with the instructions, may cause harmful interference to radio communications. However, there is no guarantee that interference will not occur in a particular installation. If this equipment does cause harmful interference to radio or television reception, which can be determined by turning the equipment off and on, the user is encouraged to try to correct the interference by one or more of the following measures:

- Reorient or relocate the receiving antenna.
- Increase the separation between the equipment and receiver.
- Connect the equipment into an outlet on a circuit different from that to which the receiver is connected.
- Consult the dealer or an experienced radio/TV technician for help.