

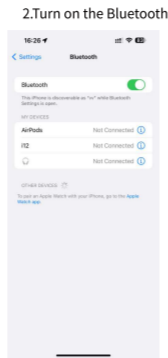


1.Scan the code to download the APP

1.Scan the QR code below to download and install app with your mobile phone, or enter Google Play/APP Store and search for "ipixel Color" to download



scan the QR code and download the app



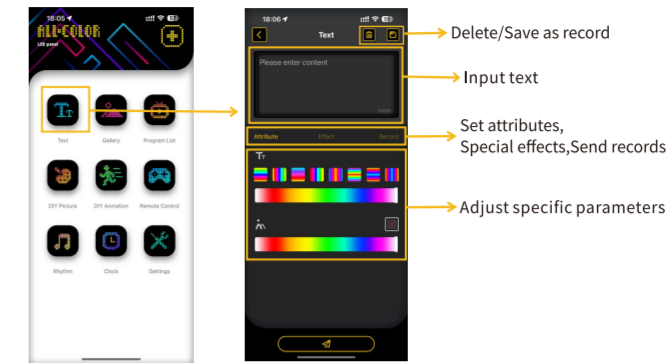
1

2.Connect the device



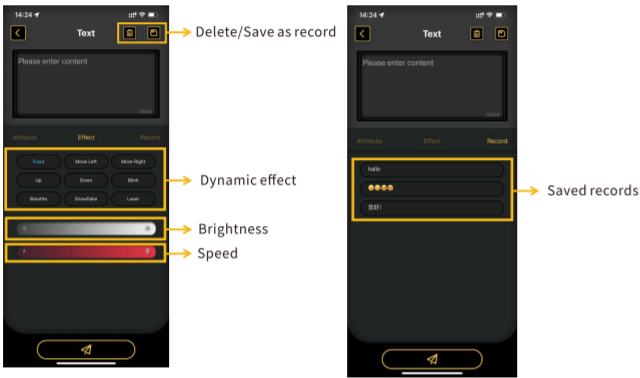
2

3.Text editing



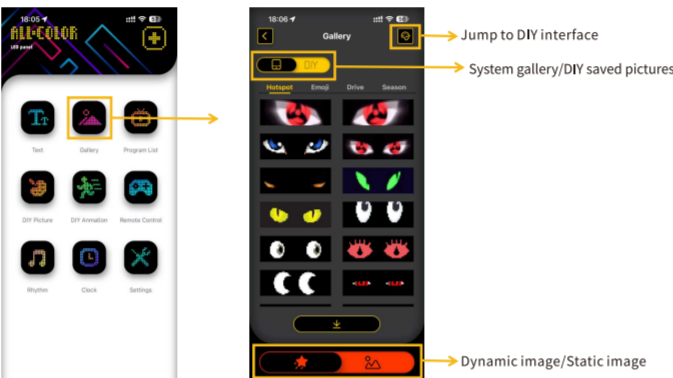
3

4.Special effects/Recording



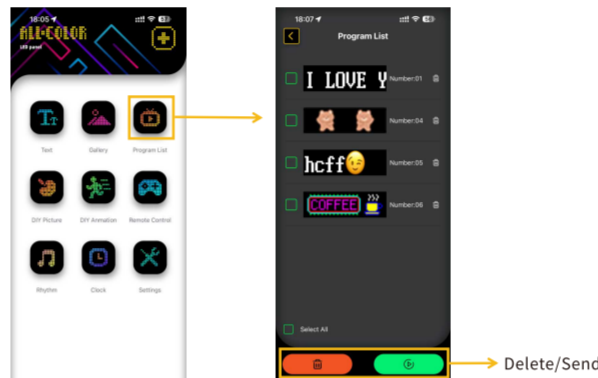
4

5.Gallery



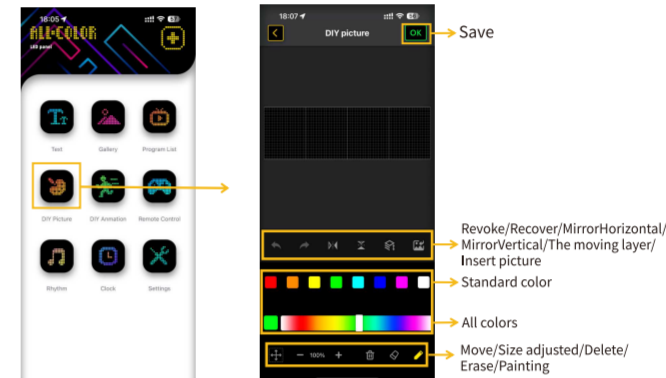
5

6.Programme list



6

7.DIY picture



7

8.DIY animation



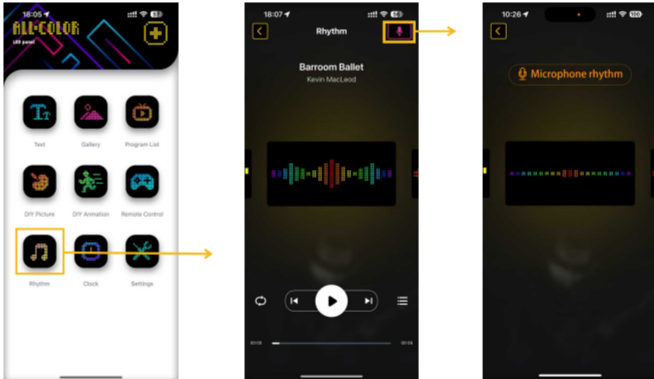
8

9.Remote control



9

10.Rhythm



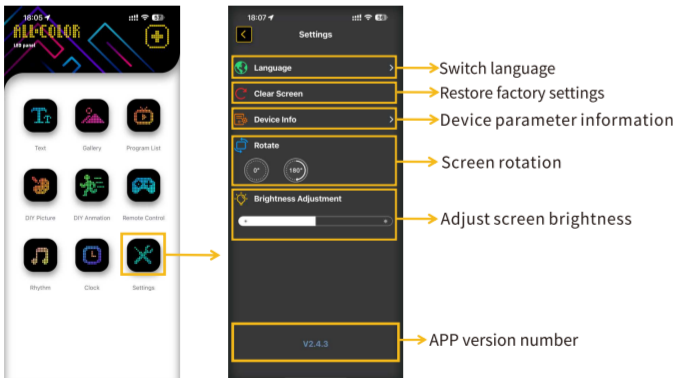
10

11.Clock



11

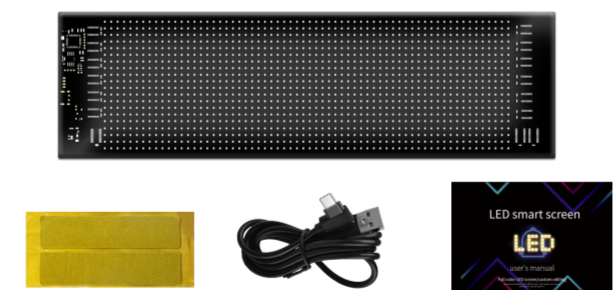
12.Settings



12

13.Product accessories

APP Smart screen x1 Double-sided foam tape x1
USB data cable x1 User Manual x1



13

14.Product parameters

product material: PU+FPCB
Product color: Black
Product Size: 16*64(374*92mm)
20*64(348*102mm)
16*32(173*70mm)
16*96(120*595mm)

Connection method: Bluetooth
Power supply: USB
Current voltage: 5V/2A



14

Warning: This device complies with Part 15 of the FCC Rules. Operation is subject to the following two conditions: (1) this device may not cause harmful interference, and (2) this device must accept any interference received, including interference that may cause undesired operation. Changes or modifications not expressly approved by the party responsible for compliance could void the user's authority to operate the equipment.
NOTE: This equipment has been tested and found to comply with the limits for a Class B digital device, pursuant to Part 15 of the FCC Rules. These limits are designed to provide reasonable protection against harmful interference in a residential installation. This equipment generates, uses and can radiate radio frequency energy and, if not installed and used in accordance with the instructions, may cause harmful interference to radio communications. However, there is no guarantee that interference will not occur in a particular installation. If this equipment does cause harmful interference to radio or television reception which can be determined by turning the equipment off and on, the user is encouraged to try to correct the interference by one or more of the following measures:
--Reorient or relocate the receiving antenna.
--Increase the separation between the equipment and receiver
--Connect the equipment into an outlet on a circuit different from that to which the receiver is connected.
--Consult the dealer or an experienced radio/TV technician for help
NOTE: This device and its antenna(s) must not be co-located or operation in conjunction with any other antenna or transmitter. RF Exposure Statement: To maintain compliance with FCC's RF Exposure guidelines, this equipment should be installed and operated with minimum distance of 20cm between the radiator and your body. This device and its antenna(s) must not be co-located or operation in conjunction with any other antenna or transmitter.

21cm

40cm