



# 键盘保护套

## 快速指南

### 产品参数:

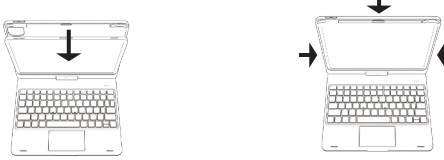
工作距离: 10米(33英尺)  
工作电压: 3.0V~4.2V  
工作电流: 0.88mA~3.85mA  
休眠电流: <125μA  
电池容量: 450mAh

充电时间: <2小时  
充电电压: 5V  
充电电流: 300mA  
工作温度: -10°C~+55°C  
按键寿命: >500万次

Provide quality products for mobile life

### 安装和拆卸

#### 1. 安装iPad



将iPad左边对准上盖保护壳的下沿, 再沿着两侧到上沿将iPad按入保护壳中。

#### 2. 拆卸iPad



将iPad上沿从保护壳的两角中掰出, 再将iPad向前翻, 使整个iPad上沿从保护壳中脱离, 然后向上抽出iPad。

#### 3. 拆装键盘



在iPad垂直于键盘状态下, 一只手按住键盘红圈位置, 另一只手向上拉出iPad和保护壳, 使键盘分离。要装回键盘, 将保护套上的孔对准转轴重新插回即可。

### 兼容性

本蓝牙键盘兼容iPadOS 13.4.1 (或更高版本), 我们强烈建议您将您的iPadOS升级到13.4.1版本 (或更高版本), 以获得最佳性能。

要查看您的iPadOS版本:

1. 进入设置 > 通用 > 关于本机 > 软件版本;
2. 将您的版本升级到最新版本以获得最佳性能。



要将iPadOS升级到最新版本:

1. 进入设置 > 通用 > 软件更新;
2. 点击“下载并安装”



\*如您看到“恢复下载”, 请点击该选项。

### 连接和充电

要与您的iPad设备连接:

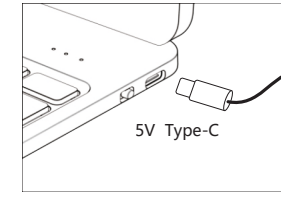
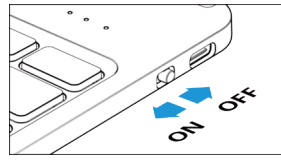
1. 先将ON/OFF开关拨到ON位置,
  2. 连接指示灯开始闪烁蓝光 (如果指示灯没有开始闪烁, 请按住“pair”键5秒),
  3. 在“设置”应用程序中打开蓝牙开关,
  4. 点击“设置”应用程序“蓝牙”部分右侧“我的设备”下的“Keyboard case”,
  5. 点击弹出窗口中的“配对”。连接成功后配对指示灯熄灭。
- \*与新设备配对请重复步骤1-3。



#### 充电及指示灯说明

- ①大小时蓝光常亮, 小时熄灭
- ②配对时蓝光闪烁, 配对成功后熄灭
- ③电量检测时, 电池>50%蓝光常亮3秒, 电池20%-50%, 黄灯常亮3秒

当电量指示灯闪烁红色时, 电池电量<20%, 为了不影响使用, 请及时充电。



### 键盘介绍



注意: 在任意应用程序中长按 CMD 键可查看可用快捷键。

#### 其他常用快捷键:

CMD+Tab=切换应用  
CMD+A=全选  
CMD+C=复制  
CMD+V=粘贴  
CMD+X=剪切  
CMD+Z=撤销

CMD+shift+3=截屏  
alt+Del=锁定/解锁屏幕  
option+shift+2=€  
option+3=£  
alt+⌘=触摸板开关

### 触摸手势说明

#### 1. 单指操作



#### 2. 双指操作



#### 3. 三指操作



#### 4. 四指操作



#### 注意:

- alt+⌘ 开启/关闭触摸板功能。
- 自定义设置(无线配对成功后):  
设置 > 辅助功能 > 触控 > 辅助触控 > 设备 > 已连接设备 > 自定义更多按钮 > 在触控板上设置操作 > 选择指令

### 小贴士

我们的保护壳右上角配有如下图一所示转轴套。当保护壳从键盘上取下时, 为防止裸露的转轴对您造成伤害, 请用手写笔取出转轴套, 并将其套在转轴上, 如图二所示。如需将iPad保护壳与键盘组装起来, 请先将转轴套取下, 并如图四所示放回保护壳中。



图一



图二



图三



图四



# Split keyboard case for ipad

## QUICK START

### parameter:

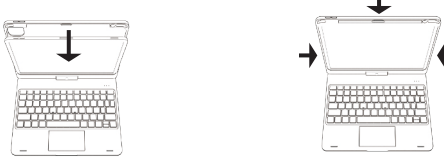
Working range: 33 feet(10m)  
Working voltage: 3.0V~4.2V  
Working current: 0.88mA~3.85mA  
Sleep current: <125μA  
Battery: 450mAh

Charging time: <2 hours  
Charging voltage: 5V  
Charging current: 300mA  
Working temperature: -10°C~+55°C  
Key life: >5million times

Provide quality products for mobile life

### INSTALL & UNINSTALL

#### 1. Install iPad



Align the left side of the iPad with the lower edge of the upper cover protective shell, and then press the iPad into the protective shell along the two sides to the upper edge.

#### 2. Uninstall iPad



Push two corners of the protective case upper edge to release iPad's two upper corners, and turn the iPad forward to detach the entire upper edge of the iPad from the protective case, then pull out the iPad upward.

#### 3. Split keyboard and assemble



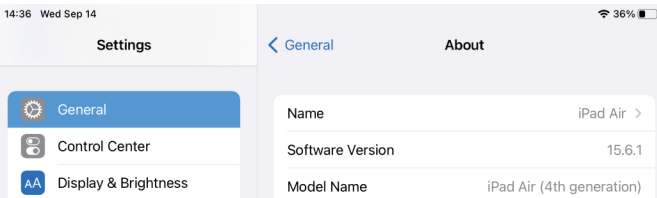
When the iPad case is perpendicular to the keyboard, press the keyboard in the red circle with one hand, then pull the iPad case up with the other hand to separate from keyboard. Reinstall the case to keyboard, pls align the case hole with rotating shaft and insert back onto keyboard.

### COMPATIBILITY

This Bluetooth keyboard is compatible with iPadOS 13.4.1 (or higher). We strongly recommend that you upgrade your iPadOS to 13.4.1 (or higher) for optimal performance.

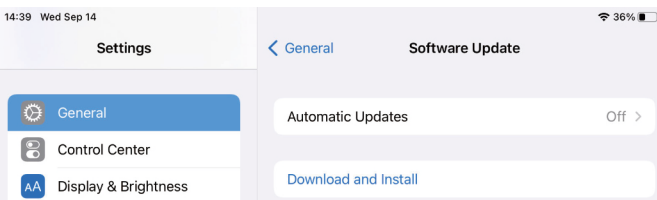
To view your iPadOS version:

1. Settings > General > About > Software Version;
2. Upgrade your version to the latest version for optimal performance.



To upgrade iPadOS to the latest version:

1. Settings > General > Software Update;
2. Click "Download and Install"

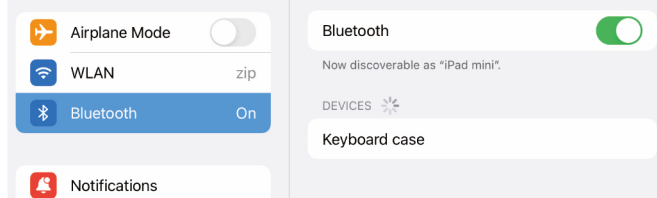


\*If you see "Resume Download", please click this option.

### PAIRING & CHARGING

To connect to your iPad device:

1. Turn the ON/OFF switch to the ON position first
  2. The connection indicator starts flashing blue (if the indicator does not start flashing, press and hold the "pair" key for 5 seconds),
  3. Turn on the Bluetooth switch in the "Settings" app.
  4. Click "Settings" app > Bluetooth, check "DEVICES" at the right side, click "Keyboard case",
  5. Click "Pair" if pop-up window appears. The connection indicator turns off after the connection is successful.
- \*Repeat steps 1-3 when connect to new devices.

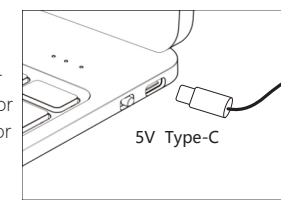
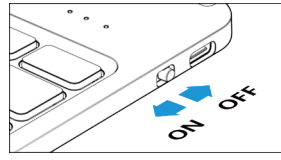


#### Indicators

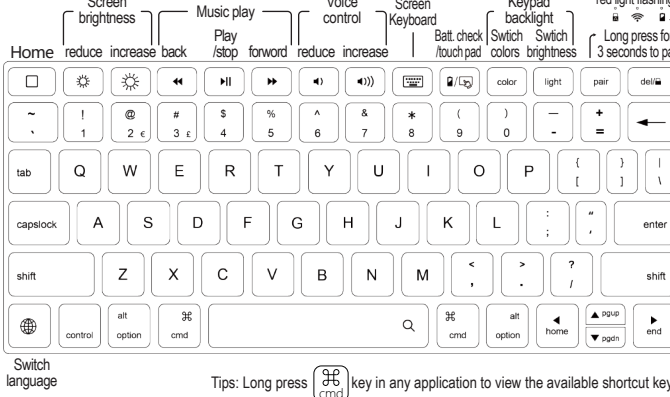
- ①Caps Lock Indicator
- ②Connection Indicator
- ③Power level Indicator

When power level > 50%, blue light turn on 3 seconds; when power level 20%-50%, yellow light turn on 3 seconds.

When red light is flashing, power level is lower than 20%, in order not to affect your using, please charge in time.



### KEYBOARD



Tips: Long press CMD key in any application to view the available shortcut keys.

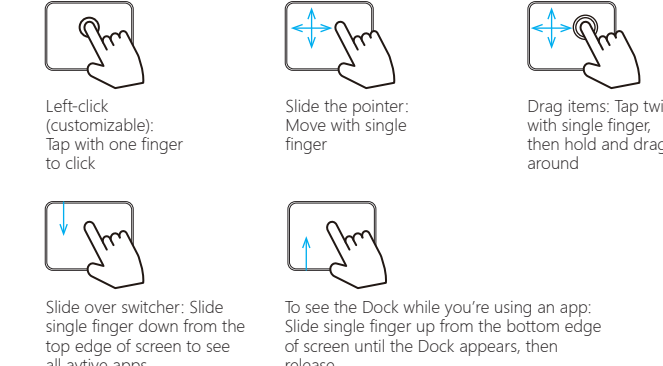
#### Common shortcut keys:

CMD+Tab=Switch apps  
CMD+A=Select All  
CMD+C=Copy  
CMD+V=Paste  
CMD+X=Cut  
CMD+Z=Undo

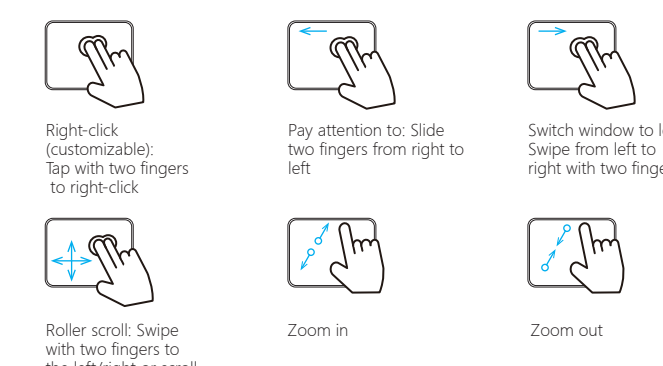
CMD+shift+3=Screen shot  
alt+Del=Screen lock/unlock  
option+shift+2=€  
option+3=£  
alt+⌘=touch pad on/off

### TOUCH PAD OPERATION

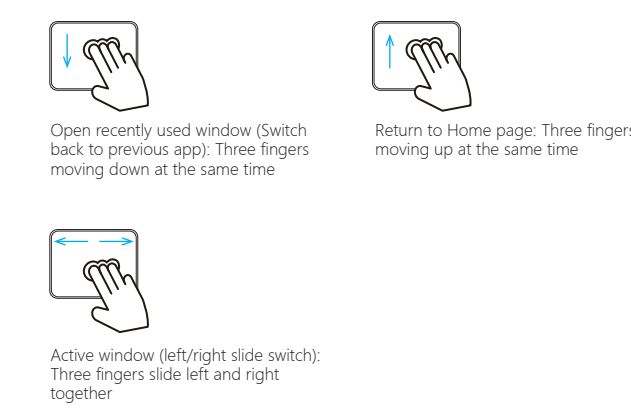
#### 1. Single finger



#### 2. Two fingers



#### 3. Three fingers



#### 4. Four fingers



#### Notice:

- alt+⌘ to turn on/off touch tap function.
- Custom settings (when connection is successful):  
Settings > Accessibility > Touch > Assistive Touch > Devices > Connected devices > Customize Additional Buttons > Set the action on the trackpad > Select instruction

### TIPS

The upper right corner of our protective case is equipped with a shaft sleeve as shown in Figure 1 below. When the iPad case is removed from keyboard, in order to prevent the exposed shaft from harming you, please take out the shaft sleeve with stylus pen and put it on the shaft, as shown in Figure 2. If you need to assemble the iPad case with keyboard, remove the shaft sleeve and put it back into the case as shown in Figure 4.



Figure 1



Figure 2



Figure 3



Figure 4

This device complies with part 15 of the FCC Rules. Operation is subject to the following two conditions: (1) This device may not cause harmful interference, and (2) this device must accept any interference received, including interference that may cause undesired operation.

Any Changes or modifications not expressly approved by the party responsible for compliance could void the user's authority to operate the equipment.

**Note:** This equipment has been tested and found to comply with the limits for a Class B digital device, pursuant to part 15 of the FCC Rules. These limits are designed to provide reasonable protection against harmful interference in a residential installation. This equipment generates uses and can radiate radio frequency energy and, if not installed and used in accordance with the instructions, may cause harmful interference to radio communications. However, there is no guarantee that interference will not occur in a particular installation. If this equipment does cause harmful interference to radio or television reception, which can be determined by turning the equipment off and on, the user is encouraged to try to correct the interference by one or more of the following measures:

- Reorient or relocate the receiving antenna.
- Increase the separation between the equipment and receiver.
- Connect the equipment into an outlet on a circuit different from that to which the receiver is connected.
- Consult the dealer or an experienced radio/TV technician for help.

RF warning for Portable device: The device has been evaluated to meet general RF exposure requirement. The device can be used in portable exposure condition without restriction.