

BLuetooth Audio Receiver

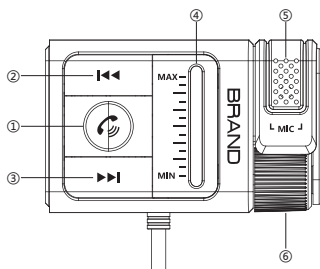
BT64 User Guide



Thanks for choosing our BLuetooth Audio Receiver. In the Receiving Mode, it streams audio to your wired speaker, headphone, car stereo or home stereo system wirelessly, from your Wireless-enabled media player. If you want to have a better experience, please read this instruction carefully

Specifications:

- Bluetooth Version: 5.3
- Bluetooth Distance: about 8m
- Product Size: 67*42*27mm
- Audio out: 3.5mm Aux-out
- Product weight: 65g
- Material: ABS shell



1. Multi-function button:

- ①. Short press: answer/hang up, play/pause
- ②. Long press: Turn lights on/off
- ③. Press twice: Activate siri&google

2. Short press: Previous song

Long press: volume -

3. Short press: Next song

Long press: volume +

4. Color lighting

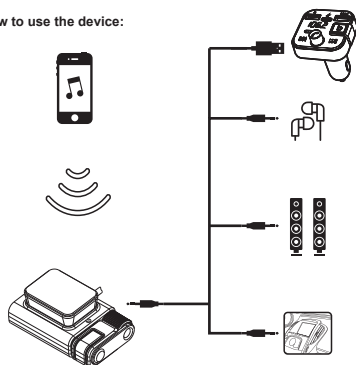
5. Mic

6. BASS EQ Scroll up: BASS EQ Enhancement

Scroll Down: BASS EQ weakening

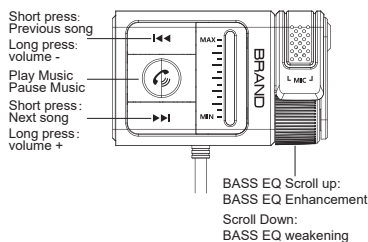
Operation Instructions

How to use the device:



1. Please plug the USB port into the car charger to get power (please do not use QC3.0 fast charging port to avoid excessive current, which will put the product into a protective state)
2. Please plug the AUX port into the car's AUX connector (automatic connection).
3. Open your phone to search for the Bluetooth name (BT64), click on Connect and use it (if prompted for verification, please enter 0000 or 1234)

The music play



Adjust the volume to note:

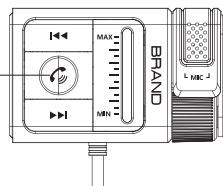
When adjusting the volume, the light bar will change synchronously (full lights for maximum volume, all lights eliminated for minimum volume)

Adjust the bass note:

Note: When adjusting the bass, the light bar will change synchronously (full lights for maximum bass effect, all lights eliminated for no bass effect)

special function:

- Long press: Turn lights on/off
- Press twice: Activate siri&google



note:

When you feel the light is too bright at night, or you don't need the light, you can freely choose to turn it on or off.

Federal Communications Commission (FCC) Statement

This device complies with part 15 of the FCC Rules. Operation is subject to the following two conditions: (1) This device may not cause harmful interference, and (2) this device must accept any interference received, including interference that may cause undesired operation.

Note: This equipment has been tested and found to comply with the limits for a Class B digital device, pursuant to part 15 of the FCC Rules. These limits are designed to provide reasonable protection against harmful interference in a residential installation. This equipment generates, uses and can radiate radio frequency energy and, if not installed and used in accordance with the instructions, may cause harmful interference to radio communications. However, there is no guarantee that interference will not occur in a particular installation. If this equipment does cause harmful interference to radio or television reception, which can be determined by turning the equipment off and on, the user is encouraged to try to correct the interference by one or more of the following measures:

- Reorient or relocate the receiving antenna.
- Increase the separation between the equipment and receiver.
- Connect the equipment into an outlet on a circuit different from that to which the receiver is connected.
- Consult the dealer or an experienced radio/TV technician for help.

Warning: Changes or modifications made to this device not expressly approved by Shenzhen Onelink Electronics Co., Limited may void the FCC authorization to operate this device.

Note: The manufacturer is not responsible for any radio or TV interference caused by unauthorized modifications to this equipment. Such modifications could void the user's authority to operate the equipment.

RF exposure statement:

The transmitter must not be colocated or operated in conjunction with any other antenna or transmitter. This equipment complies with the FCC RF radiation exposure limits set forth for an uncontrolled environment. This equipment should be installed and operated with a Minimum distance of 20cm between the radiator and any part of your body.