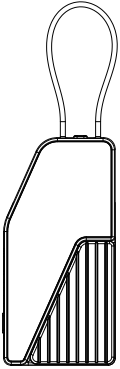
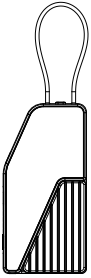


Findix



User Manual

What's in the box



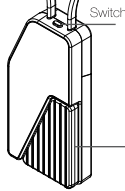
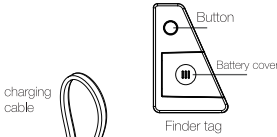
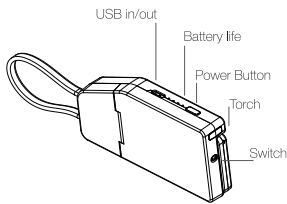
Findix 1pc

User Manual 1pc



1

Key Functions



Finder tag

2

Functions Description

The Rupt Findix is a versatile device that combines a power bank, flashlight, and Find My functionality. It features a 2000mAh battery that serves as a power bank, with a charging cable that doubles as a convenient lanyard. The device includes a built-in flashlight and integrates seamlessly with the Find My network. To activate the Find My feature, press and release the button, and the device will beep and turn on, allowing you to pair it with your Apple device.

APPLE FIND MY DESCRIPTION

- Using the Apple Find My app, you can locate your Findix device from your iPhone, iPad, iPod touch, or Mac. Simply open the app, select the corresponding item, and you'll see the location of your device on the map. Follow the map to retrieve it.
- If the device is far away, you can enable Lost Mode to lock its location and use the map to track it. Thanks to the widespread use of Apple devices, finding your item is made easier.
- Additionally, if your Findix device moves out of range of your Apple device, you will receive an alarm notification. This feature helps you quickly locate lost items and prevent further losses.

3

Notes

- Rupt Findix works only with Apple iOS devices, such as iPhones.
- It requires an Apple device with Bluetooth and an active internet connection.
- Log in to your iCloud account, go to "Settings" > "Apple ID," and enable "Share My Location" in the Apple Find My app.
- To use the Apple Find My app to locate the Rupt Findix, you need an Apple ID and an iPhone running iOS 18.0 or later, or an iPad running iPadOS 18.0 or later. For the best experience, ensure your device is running the latest version of iOS, iPadOS, or macOS. The Find Items app on Apple Watch requires the latest version of watchOS.
- If the Rupt Findix is not added to an Apple ID within 2 minutes of being powered on, it will automatically power off. Please power it back on before attempting to set it up again.
- If you encounter any issues connecting to the device, try resetting it and repeating the connection process.

4

Instructions

POWER BANK & TORCH

- Turn On:** Press the button once to turn the device on.
- Turn Off:** When the power bank is on, double-click the button to turn the device off.
- Torch On/Off:** Press and hold the button for 2 seconds to turn the torch on or off.

FINDER TAG

- Turn On:** Press the function button once to power on your Findix. You will hear a "Di" sound.
- Turn Off:** Press and hold the function button for 5 seconds until you hear "DiDiDi," then release. Your Findix is now off.
- Reset:** Remove the Findix from the Apple Find My app. After removing it, power it on and press the function button on the weTag mini three times rapidly. On the fourth press, hold the button until you hear a long "Di" sound. The Findix is now reset and ready to be paired with a new Apple ID.

5

First time Setup

- Turn on the device.
- Open the Find My app on your phone.
- Tap Item and select Add Item.
- Choose Other Supported Item.
- Select Rupt Findix and tap Connect.
- Assign a name and an emoji to the tag.
- Tap Finish.

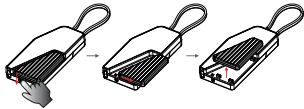
Start using your device!

Specs

Dimensions	6.81" L x 1.97" W x 0.65" H
Weight	2.22 oz
Battery Capacity	3.7V, 2000mAh
Battery Type	Li-polymer battery 6 CR2302 coin battery
Charging Time	Approximately 1.5 hours
Button	Input/Output: 5V/2A

6

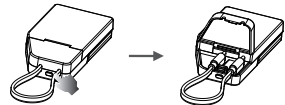
How to use the finder tag



- Slide the switch down to unlock the finder tag.
- Pull the tag to the right until it stops, ensuring the slots are visible.
- Lift the tag up to remove it from the power bank.

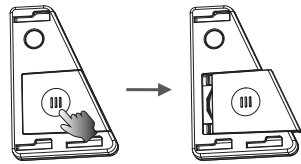
HOW TO REMOVE THE CHARGING CABLE

- Press the button and open the lid using the hinge.
- Take out the cable easily.

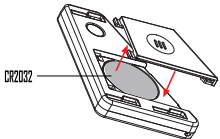


7

How to replace tag battery



- Slide the cover to the right to loosen the buckle.
- Open the plastic cover, remove the old battery, and insert a new CR2032 lithium 3V coin battery with the positive side facing up. You will hear a "Di" tone when the battery is successfully connected.
- Replace the cover, ensuring the tabs on the cover align with the slots on the finder.



8

Privacy Data Protection

1- Personal Location Information Protection: The Apple Find My network uses advanced encryption to ensure that no one, not even Apple or Shenzhen Winnershine Electronics Co., Ltd., can view the location of your Rupt Trakard.

2- Prevent Anonymous Tracking: To prevent malicious tracking, the device offers safeguards. If someone else's item finder is mixed with your belongings and tracks you for a period, you will be notified in two ways:

For Apple Devices: If you have an iPhone, iPad, or other Apple device running iOS 14.5 or iPadOS 14.5 and later, you will receive reminders directly on your device. For Non-Apple Devices: If you don't have an Apple device, the item finder will emit a beep to alert you when it moves after being in your belongings for a while.

If your friend is wearing an item finder, or there are multiple finders in public spaces like transportation, don't worry, warnings will not be triggered as long as the finder remains close to its owner.



9

FCC Statement

This device complies with Part 15 of the FCC Rules. Operation is subject to the following two conditions: (1) this device may not cause harmful interference, and (2) this device must accept any interference received, including interference that may cause undesired operation.

Any changes or modifications not expressly approved by the party responsible for compliance could void the user's authority to operate the equipment.

NOTE: This equipment has been tested and found to comply with the limits for a Class B digital device, pursuant to Part 15 of the FCC Rules. These limits are designed to provide reasonable protection against harmful interference in a residential installation. This equipment generates, uses, and can radiate radio frequency energy and, if not installed and used in accordance with the instructions, may cause harmful interference to radio communications. However, there is no guarantee that interference will not occur in a particular installation. If this equipment does cause harmful interference to radio or television reception, which can be determined by turning the equipment off and on, the user is encouraged to try to correct the interference by one or more of the following measures:

- Reorient or relocate the receiving antenna.
 - Increase the separation between the equipment and the receiver.
 - Connect the equipment into an outlet on a circuit different from that to which the receiver is connected.
 - Consult the dealer or an experienced radio/TV technician for help.
- The device has been evaluated to meet general RF exposure requirements. The device can be used in portable exposure conditions without restriction.

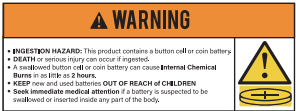
10

Legal

Use of the Works with Apple badge means that a product has been designed to work specifically with the technology identified in the badge and has been certified by the product manufacturer to meet Apple Find My network product specifications and requirements. Apple is not responsible for the operation of this device or use of this product or its compliance with safety and regulatory standards. To use the Apple Find My app to locate this item, the latest version of iOS, iPadOS, or macOS is recommended. The Find Items app on Apple Watch requires the latest version of watchOS. Apple, Apple Find My, Apple Watch, Find My, iPhone, iPad, iPadOS, Mac, macOS and watchOS are the trademarks of Apple Inc., registered in the U.S. and other countries. iOS is a trademark or registered trademark of Cisco in the U.S. and other countries and is used under license.

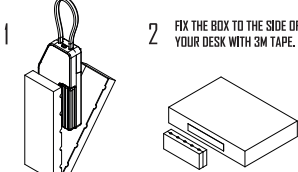
KEEP THE BATTERY OUT OF THE REACH OF CHILDREN

- Remove used batteries immediately and recycle or dispose of them according to local regulations. Keep batteries away from children. Do NOT dispose of batteries in household trash or incinerate them.
- Even used batteries can cause severe injury or death.
- If a battery is ingested or an accident occurs, contact a local poison control center for treatment information.

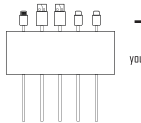
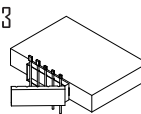


11

Second Life Use



REMOVE FINDIX FROM THE BOX.



With just a few simple steps, transform your Findix packaging into a practical card holder with a magnetic attachment to keep your cards secure and organized.

12

