

APPROVAL

CUSTOMER : 科伏思

DESCRIPTION: YD-GPS252502-A

PART NO.:

ANTENNA TYPE: Ceramic antenna

D A T E: 2023-7-11

Seller signature

ENGINEERING DEPARTMENT	Q C DEPARTMENT	SALES DEPARTMENT

Customer signature

ENGINEERING DEPARTMENT	Q C DEPARTMENT	PURCHASING DEPARTMENT

Contact number: 0755-2307 3599

✱ Approval in duplicate, please signed by your company.

Antenna specification

一、 Summarize

This antenna is a passive ceramic antenna, can be used to receive GPS L1 or other frequency band satellite signals, has the characteristics of small size, high stability, suitable for PND, vehicle navigator, handheld and other equipment.

二、 Antenna characteristics

Technical requirement	Technical index	remark
Range Of Receiving Frequency	GPS L1: 1575±1.023MHz	
Center Frequency		Test on a 25*25 mm ground floor
Gain at Zenith	-3dBi	Test on 50*50 mm ground floor
Gain at 10° Elevation	/	Test on 50*50 mm ground floor
Output VSWR	<1.5	Center frequency
Impedance	50Ω	
Band Width	±6MHz	Return Loss≤-10dB Return loss≤-10dB
Polarization	Right-handed circular polarization	
Axis ratio	<3dB	Center frequency
Horizontal coverage angle	360°	
Thrust	50N~100N	

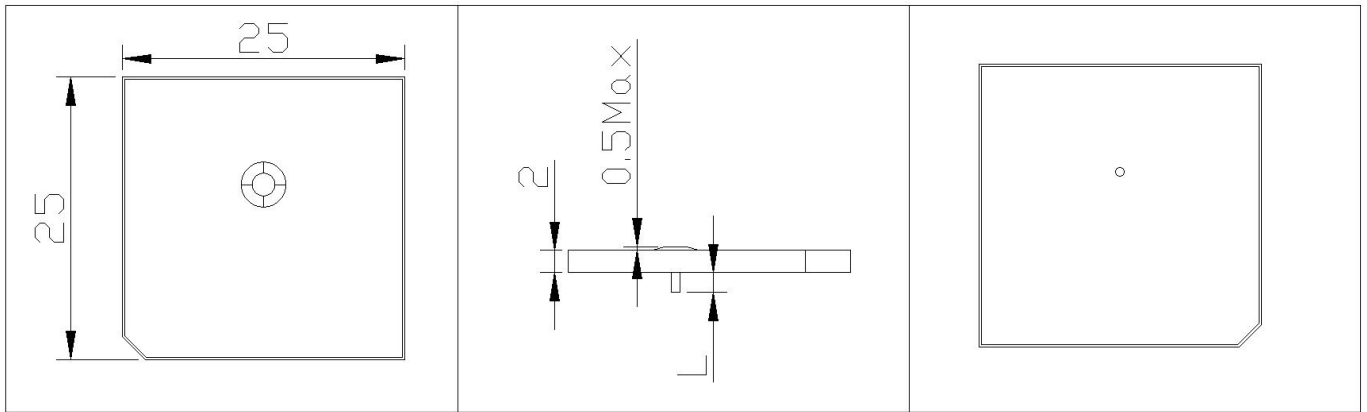
三、 Working environment

Operational Temperature	-25℃~+75℃
Storage Temperature	-40℃~+85℃
Wet degree	40%~95%

四、 Structural characteristics

Antenna size mm	25*25*2
Pin size mm	2

五、 Test diagram



六、 Antenna performance - SWR

