

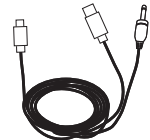
1 Check the Contents



Bluetooth Speaker



Dynamic Microphone x 2

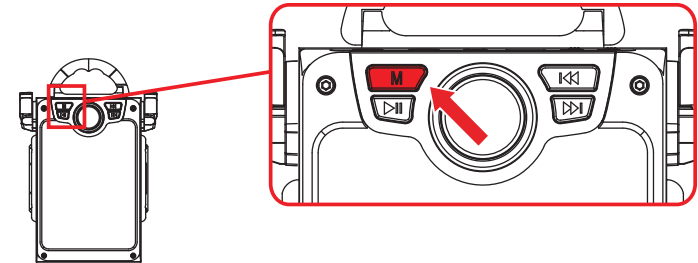


USB Power Supply Cable / Line-in Cord

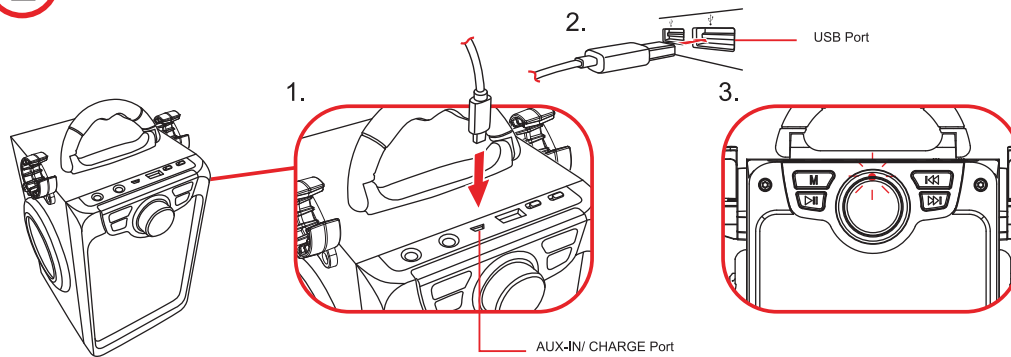


Instruction Manual

4 FUNCTION Switch

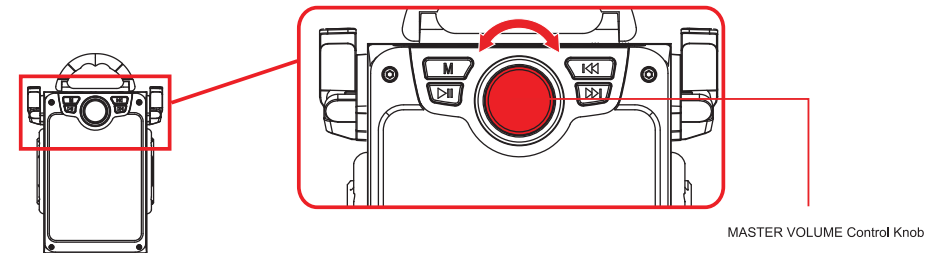


2 USB Charging

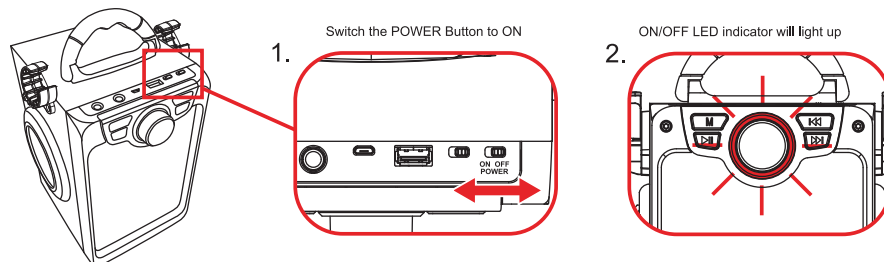


5 Adjust the Volume

Twist the Control Knob to the LEFT/ RIGHT to DECREASE/ INCREASE the volume



3 Turn ON the Power



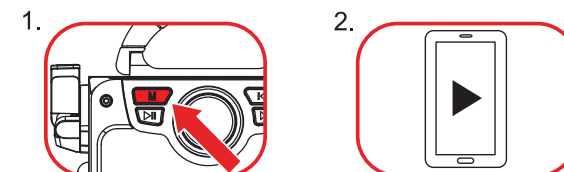
6 Bluetooth Connection



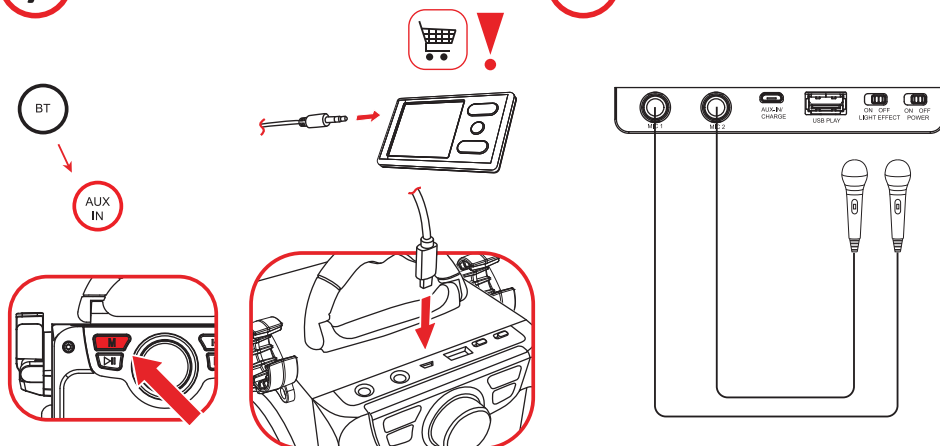
Pair Name:
CR2705/2706



To start playing , press the PLAY/PAUSE button of your phone.

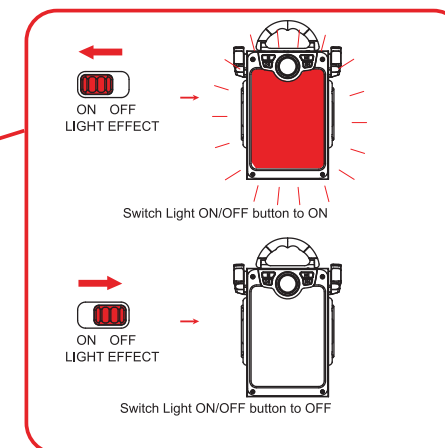
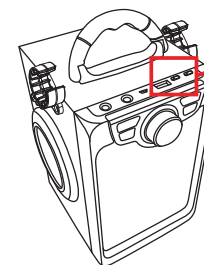


7 Line-in Connection

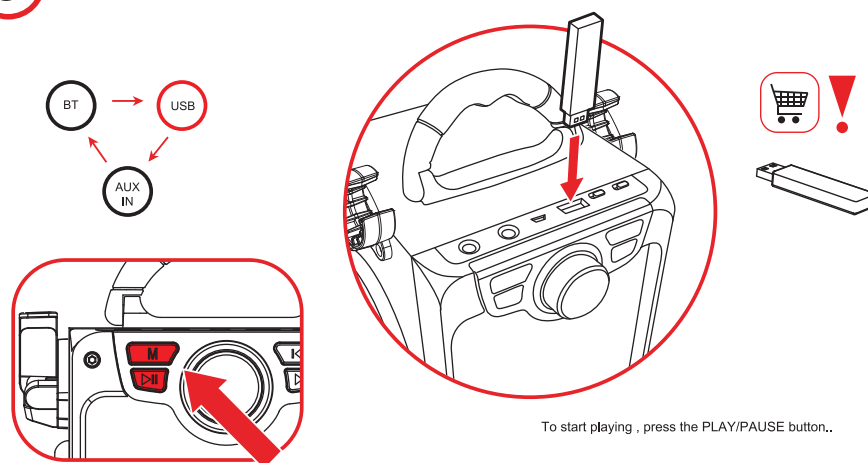


8 Setting up Your Microphone

10 LIGHT ON/OFF Button



9 USB Connection



To start playing , press the PLAY/PAUSE button..

PLEASE DON'T



SWING THE MIC

SPECIFICATIONS

GENERAL

Power Supply:

DC input 5V, 0.5A or USB Power

Power Output

2 X 3W (RMS)

Speaker Impedance:

4 Ohms

Auxiliary port: USB

Weight 1.37 kg / 3lbs 3oz with mics and cables.

Weight speaker only 1.155 kg / 2lbs 12 oz.

Length 19.75cm / 7.8 in

Width 19cm / 7.48 in

Height 25.75cm / 10.15 in

Device run on full charge:

3 hours on Max Volume output with flashing lights

4.5 hours half volume and lights off

USB SECTION

USB 2.0 compatible port for MP3 file playback

Speaker Wattage:

2 x 2.5 Watts

Manufactured and imported by:

Dime Trading Corp. Brooklyn NY 11211

www.croove.com

cs@croove.com

©2023 CROOVE™

FCC ID:

2BBZL-27052706

FCC Caution:

This device complies with part 15 of the FCC Rules. Operation is subject to the following two conditions: (1) This device may not cause harmful interference, and (2) this device must accept any interference received, including interference that may cause undesired operation.

Any Changes or modifications not expressly approved by the party responsible for compliance could void the user's authority to operate the equipment.

Note: This equipment has been tested and found to comply with the limits for a Class B digital device, pursuant to part 15 of the FCC Rules. These limits are designed to provide reasonable protection against harmful interference in a residential installation. This equipment generates uses and can radiate radio frequency energy and, if not installed and used in accordance with the instructions, may cause harmful interference to radio communications. However, there is no guarantee that interference will not occur in a particular installation. If this equipment does cause harmful interference to radio or television reception, which can be determined by turning the equipment off and on, the user is encouraged to try to correct the interference by one or more of the following measures:

- Reorient or relocate the receiving antenna.
- Increase the separation between the equipment and receiver.
- Connect the equipment into an outlet on a circuit different from that to which the receiver is connected.
- Consult the dealer or an experienced radio/TV technician for help.

The device has been evaluated to meet general RF exposure requirement. The device can be used in portable exposure condition without restriction.