

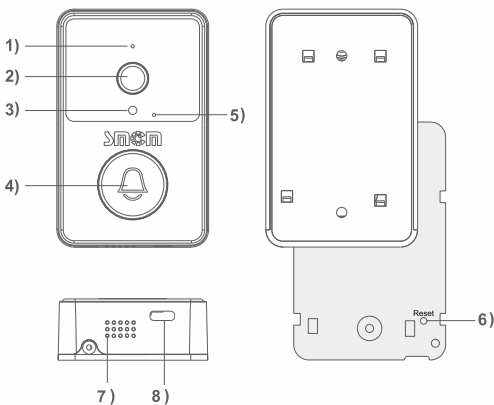


Video Door Bell

Instruction manual V1.0

Please read it carefully before use and keep it for future reference

I. Appearance introduction:

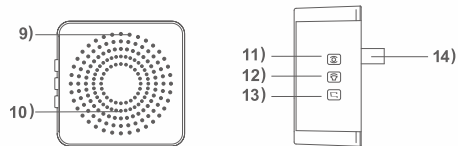


Doorbell:

- 1) Mic
- 2) Lens
- 3) Light sensitive
- 4) Doorbell key
- 5) Indicator light
- 6) Reset (Hidden in the back here)
- 7) Speaker
- 8) Charging port

Note:

The Reset button is hidden in the back, please use the attached screw driver to unscrew the small screws at the bottom, gently pull down the flat after removing the cover plate, then you can see the Reset.



Ding Dong:

- 9) Indicator light
- 10) Speaker
- 11) Pairing key
- 12) Volume size
- 13) Music toggle
- 14) USB plug port

II. Download mode of APP

For Android phones, please search "Smart Life", which can be downloaded in its own app market or App Treasure. For IOS phones, please search "Smart Life" in APP Store to download.

Note:

The function of this doorbell is only supported on APP 4.3.0 and above, for user's better experience, please download or update the latest version.



III. APP registration:

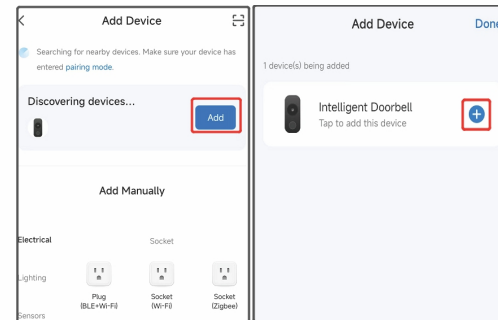
1. At the first download and use, please click "Register"; If you have an account, please click "Login".
2. Click "Register", read "Privacy Policy", and click "Agree". Enter a valid phone number or email address and click "Continue". Then enter the verification code to log in the APP ("Try Now" login can not add doorbell devices normally; please register and log in.)
3. About APP permissions pop-up prompts, such as message push, geographic access, location, peripheral connection devices, etc., please set "Allow".

IV. Adding a device:

1. Turn on the bluetooth and location permission functions of the mobile phone.

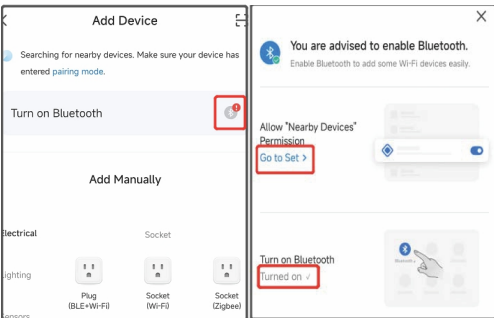
2. Press the doorbell button to open the device, and the work indicator will be blinked. Then the device will match the network mode.

3. Open the APP, enter the "Home page", and click "+" on the upper right corner of the page, the APP will automatically search and discover the device, then click "Add".



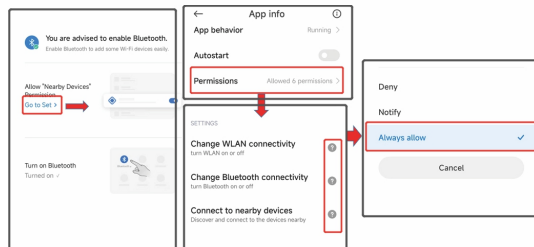
Note:

- a. If the device is not automatically searched, please click "turn on Bluetooth" in the page below and set "Allow device permissions near this application".

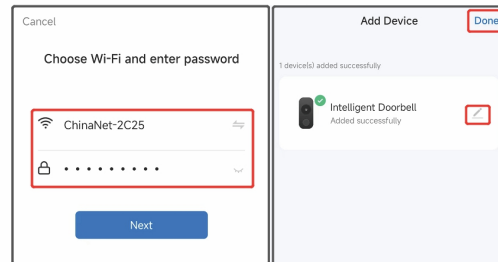


Note:

- Access permission management, please turn on WLAN, Bluetooth, and nearby devices, and select "Always Allow".



- After adding a doorbell successfully, please enter your 2.4Ghz wireless network account and password, then click "Next". When connecting, keep your router, mobile phone and doorbell as close as possible. After setting, click "Finish". (Note: If the connection is not successful, please reset the device and reconnect)

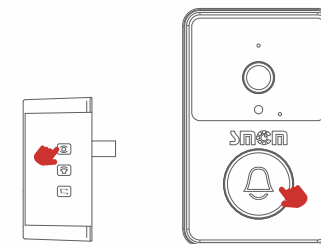


- please fully charge the device and install it within the range of stable and effective WiFi signal. Then the smart doorbell host will be successfully added.

FCC RF Exposure Warning Statements:

This equipment complies with FCC radiation exposure limits set forth for an uncontrolled environment. This equipment shall be installed and operated with minimum distance 20cm between the radiator & body.

V. Doorbell and Ding Dong matching:



Ding Dong

Doorbell

- Power on the Ding Dong machine (left);
- Long press the pairing button of Ding Dong machine for 3 seconds (as shown in the picture), and the indicator will be blinked.
- Press the doorbell button (right), then the Ding Dong machine will ring. It means that the match is successful.

VI. Mobile message push

Enter mobile phone - Settings - notification and status bar - Application notification management to allow APP notification permission, then enable notification, suspension, lock screen.sound reminder and other notification functions.
(Note: There are different mobile phone models, so the operation interface and options are different, please choose independently)

VII. Function introduction:

- Message push: When visitors ring the doorbell, the mobile phone will receive from the APP push message, please click the push popup to open the video call.
- Video call: Hold down the microphone key to talk with each other open the speaker to listen.
- Doorbell sharing: Enter the real-time interface of APP, click Settings - Share device - Add Share - Enter the registered account
- Low battery reminder: When the battery is low, the APP will push low battery reminder. Please charge in time.

NOTE: This equipment has been tested and found to comply with the limits for a Class B digital device, pursuant to part 15 of the FCC Rules. These limits are designed to provide reasonable protection against harmful interference in a residential installation. This equipment generates, uses and can radiate radio frequency energy and, if not installed and used in accordance with the instructions, may cause harmful interference to radio communications. However, there is no guarantee that interference will not occur in a particular installation. If this equipment does cause harmful interference to radio or television reception, which can be determined by turning the equipment off and on, the user is encouraged to try to correct the interference by one or more of the following measures:

- Reorient or relocate the receiving antenna.
- Increase the separation between the equipment and receiver.
- Connect the equipment into an outlet on a circuit different from that to which the receiver is connected.
- Consult the dealer or an experienced radio/TV technician for help

Changes or modifications not expressly approved by the party responsible for compliance could void the user's authority to operate the equipment.

This device complies with Part 15 of the FCC Rules. Operation is subject to the following two conditions:
(1) this device may not cause harmful interference, and (2) this device must accept any interference received, including interference that may cause undesired operation.