

Zhongshan Honglan Electronic Technology Co., Ltd

Zhongshan Honglan Electronic Technology Co., Ltd.

SPECIFICATION FOR APPROVAL

CUSTOMER : _____

CUSTOMER P/N : _____

MATERIAL NO. : _____

PRODUCT NAME : Wireless charging PCBAC

SPECIFICATIONS : _____

MODEL NO. : HL_Y15W

ENVIRONMENTAL PROTECTION : ROHS

PCB COLOR : ☐ Black ☒ Green

REMARKS : _____

(Honglan Electronic)					CUSTOMER APPROVAL
EDIT	Electronic Confirm	Structure Confirm	Packing Confirm	CHECK	CHECK

Zhongshan Honglan Electronic Technology Co., Ltd.

2F, 12 Nam Shing Lane, Yik Lung Road, Xiaolan, new Zhongshan

TEL: (+86) 177 2459 9870

FAX:

CHANGE LIST

[illegible]

Content

1 Indicator light description.....	4
2 Basic Performance Parameters.....	4
3 Protection Requirement.....	4
4 Mean Time Between Failure (MTBF)	5
10 Product Weight.....	5
11 Product size、 picture.....	5
12 RoHS Requirement	5
13 Product packing picture.....	5
14 Statement.....	6

1 INDICATOR LIGHT DESCRIPTION

state colour	Power on	Standby	Charging	Full	FOD	warning
green light Green	Light up 3 times	Red light on	breathe	Green light always on	Flashing red light	Flashing red light

2 BASIC PERFORMANCE PARAMETERS

4.1 Input voltage: $DC12V \pm 0.25V$

Input Current: DC12V 2A-max,

4.2 Stand-by power consumption: $\leq 0.2W$

4.3 Working Frequency: 115KHz-205KHz

3 PROTECTION REQUIREMENT

3.1 OCP

current-limiting is 12V 1.8A.

3.2 SCP

The short-circuit protection test is that when RX output short-circuit to the ground, the input power of the product will be reduced and no damage will be caused. When the short-circuit cond

The MTBF should not be less than 30000 hours at the temperature of 25°C.

4

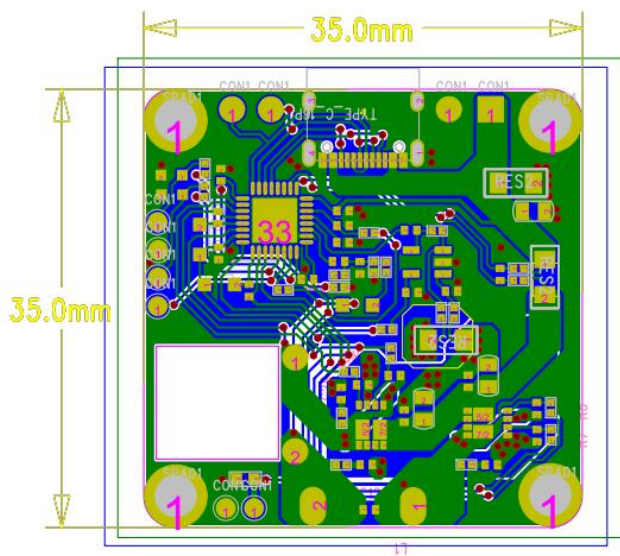
5 PRECAUTIONS FOR USE

6 WEIGHT

17.5 g \pm 0.2 g

7 PRODUCT SIZE、 PICTURE

35*35*1.2mm



8 PRODUCT PACKING PICTURE

9 ROHS REQUIREMENT

The wireless charger shall meet ROHS.

10 STATEMENT

The final interpretation of this specification belongs to Zhongshan Honglan Electronic Technology Co. , Ltd.

This device complies with part 15 of the FCC Rules. Operation is subject to the following two conditions: (1) This device may not cause harmful interference, and (2) this device must accept any interference received, including interference that may cause undesired operation.

Any changes or modifications not expressly approved by the party responsible for compliance could void the user's authority to operate the equipment.

NOTE: This equipment has been tested and found to comply with the limits for a Class B digital device, pursuant to Part 15 of the FCC Rules. These limits are designed to provide reasonable protection against harmful interference in a residential installation. This equipment generates, uses and can radiate radio frequency energy and, if not installed and used in accordance with the instructions, may cause harmful interference to radio communications. However, there is no guarantee that interference will not occur in a particular installation.

If this equipment does cause harmful interference to radio or television reception, which can be determined by turning the equipment off and on, the user is encouraged to try to correct the interference by one or more of the following measures:

- Reorient or relocate the receiving antenna.
- Increase the separation between the equipment and receiver.
- Connect the equipment into an outlet on a circuit different from that to which the receiver is connected.
- Consult the dealer or an experienced radio/TV technician for help.

FCC Radiation Exposure Statement

This equipment complies with FCC radiation exposure limits set forth for an uncontrolled environment. This equipment should be installed and operated with a minimum distance of 20 cm between the radiator and your body.

FCC ID: 2BBVH-HL-Y15W