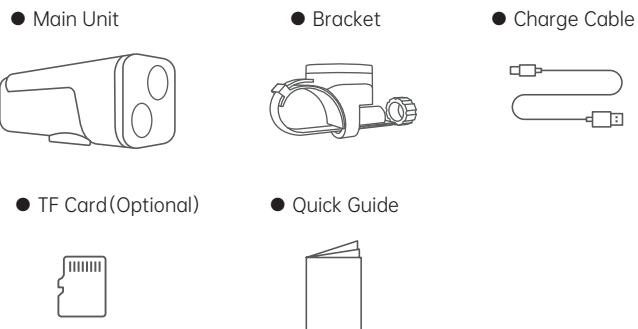
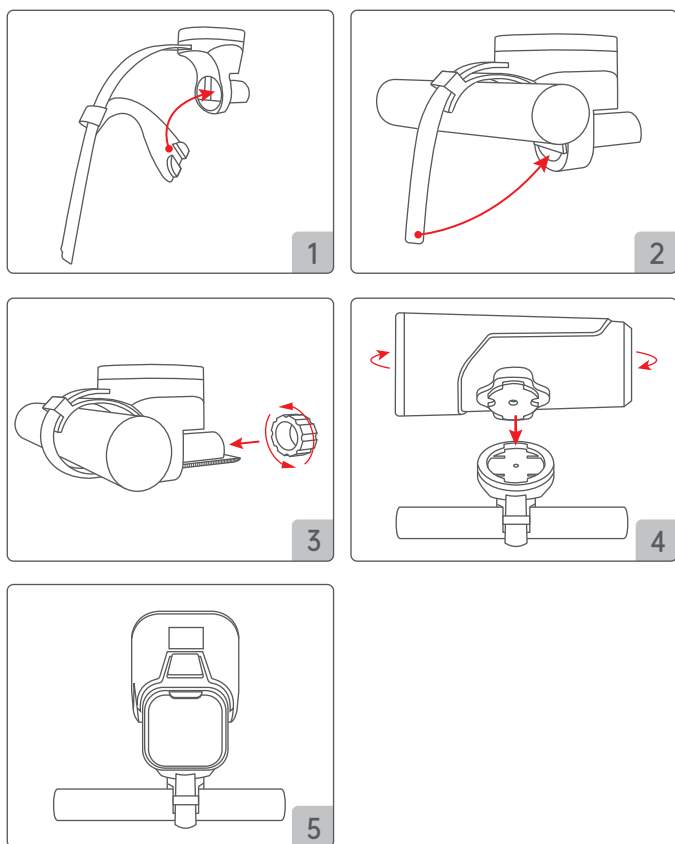


Packing List



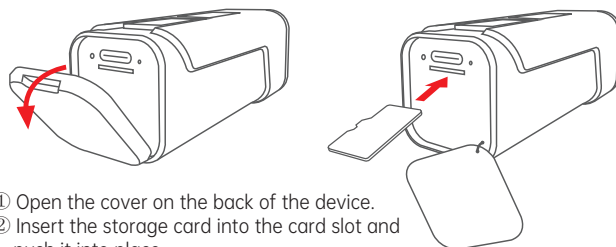
※ The packaging content of this product may change without prior notice.

Bracket Installation



- ① Insert one end of the bracket spacer into the corresponding bracket hole.
- ② Wrap the threaded fastening strip around the handlebar and thread it through the bracket hole.
- ③ Then screw on the fastening nut, adjust the bracket angle to the desired position, and tighten the nut securely.
- ④ Align the device horizontally with the bracket notch, push it into place, and rotate it 90 degrees clockwise until you hear a click, indicating successful installation.

TF Card Installation(Optional)



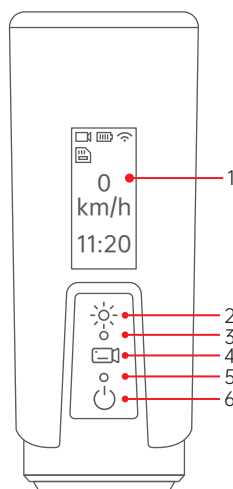
① Open the cover on the back of the device.

② Insert the storage card into the card slot and push it into place.

※ When a new TF card is inserted, the screen will display the "FORMAT" icon after booting up. At this time, press the "FORMAT" button, and the device will automatically format the TF card.

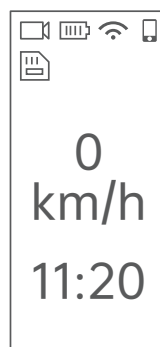
※ If the Pull icon (PULL) is displayed on the screen, please refer to the "Loop Recording Duration" menu in the "Recorder Settings".

Function Introduction



1	Display screen
2	Flashlight High light, low light, and flicker in sequence
3	Recorder indicator light Flashing when the recorder is turned on
4	Recorder switch ※ Turn on or off the recorder ※ Press and hold for 3 seconds while the device is turned on to activate WiFi ※ When inserting a new TF card, press to format the TF card
5	Charging indicator light This light is on when charging
6	Power button Press and hold for 3 seconds: To turn on or off the device Short press: Short press during recording to lock the current video, and the recording icon will flash yellow.

Screen Display Instruction



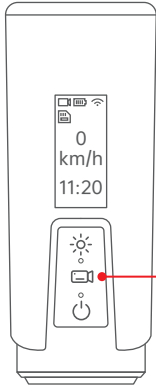
	Video recording status Red flashing: Recording in progress Yellow flashing: The current video is locked No flashing: Pause recording
	State of charge
	WiFi is turned on
	Connected to App
	Memory card inserted
	No memory card
km/h	Speedometer(Green: GPS located, speedometer working)
11:20	Time

App Download and Connection

- ① Scan the QR code below with your phone to install the "Spedal Link" App on your device.

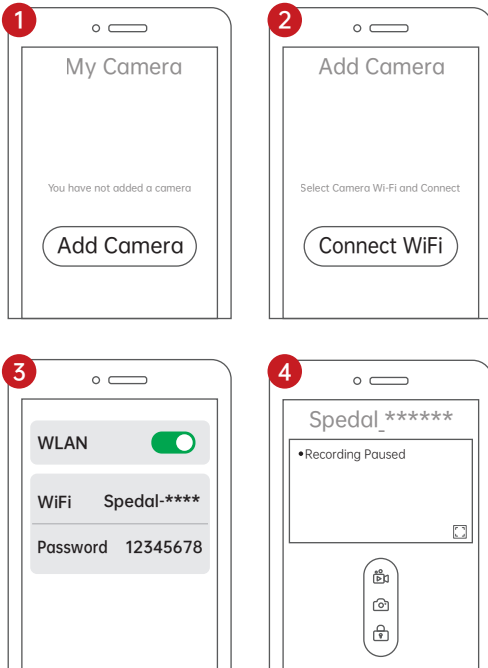


- ② Power on the device, then press and hold the " " button for 3 seconds to activate the device's Wi-Fi.



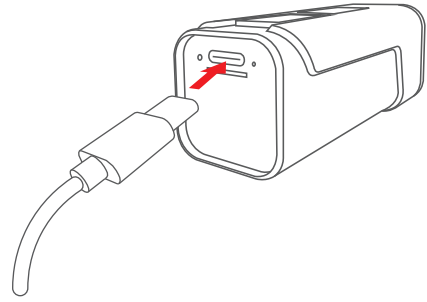
Press and hold the " " button for 3 seconds

- ③ Open the "Spedal Link" App, tap "Add Camera", then select "Connect WiFi" to connect to the Wi-Fi network "Spedal_*****" (password: 12345678).



- ④ A " " icon will appear in the top-right corner of the device screen, indicating a successful connection.

Device Charging



- ① Open the cover on the back of the device.
- ② Insert the charging cable into the charging port of the device, and the red light of the device will light up, indicating that it is charging.

※ If the device does not receive GPS, does not start recording, and is not in operation, it will automatically shut down after 10 minutes.

Attention

- ① Ensure that the camera lens is clean; foreign objects may scratch the lens. It is recommended to clean the lens with a soft, dry cloth.
- ② The device may become clogged with mud and sand during use. Please rinse with clean water.
- ③ All parts should avoid cleaning with petrol, oil-based cleaners, and other organic solvents, as this may cause corrosion, waterproofing failure, and protective coating failure.

Thank you for choosing the Spedal S1 product. Before using this product, please read and strictly adhere to the safety and compliance instructions provided in this guide. Failure to follow these guidelines may lead to personal injury, product damage, or affect other items. Using this product indicates that you have read and understood the contents of this guide and agree to accept all the terms in this guide and all related documents of the product. You commit to using the product for lawful purposes and assume full responsibility for the consequences of its use. Spedal S1 shall not be liable for any damage, injury, or legal liability caused by the direct or indirect use of this product.



more product information
www.spedal.tech



more product videos
youtube search **spedal**

For any questions please contact support@spedaltech.com

FCC Statement

This device complies with Part 15 of the FCC rules. Operation is subject to the following two conditions: 1) this device may not cause harmful interference, and 2) this device must accept any interference received, including interference that may cause undesired operation.

Note: This equipment has been tested and found to comply with the limits for a Class B digital device, pursuant to part 15 of the FCC Rules. These limits are designed to provide reasonable protection against harmful interference in a residential installation.

This equipment generates uses and can radiate radio frequency energy and, if not installed and used in accordance with the instructions, may cause harmful interference to radio communications. However, there is no guarantee that interference will not occur in particular installation. If this equipment does cause harmful interference to radio or television reception, which can be determined by turning the equipment off and on, the user is encouraged to try to correct the interference by one or more of the following measures:

- Reorient or relocate the receiving antenna.
- Increase the separation between the equipment and receiver.
- Connect the equipment into an outlet on a circuit different from that to which the receiver is connected.
- Consult the dealer or an experienced radio/TV technician for help.

Changes or modifications not expressly approved by the party responsible for compliance could void the user's authority to operate the equipment.

FCC RF Radiation Exposure Statement

The device has been evaluated to meet general RF exposure requirement. The device can be used in portable exposure condition without restriction.