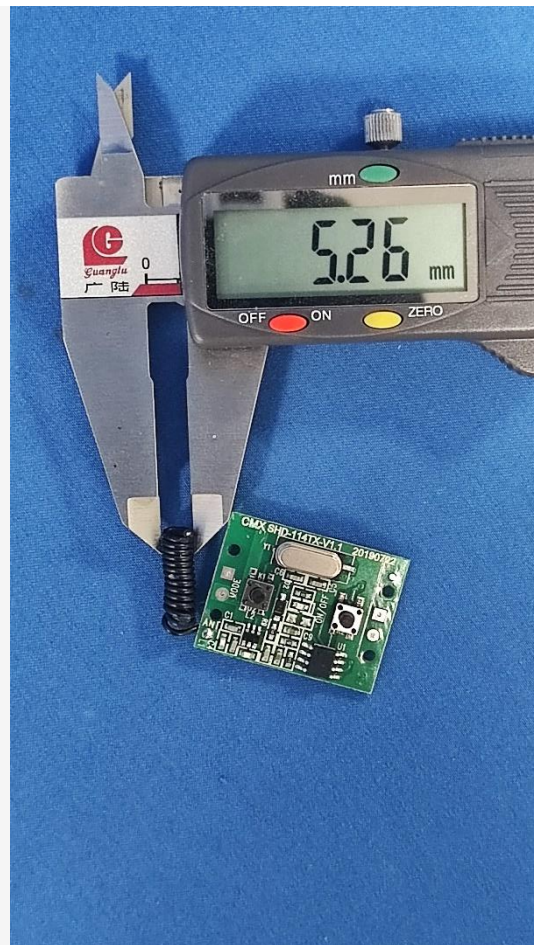
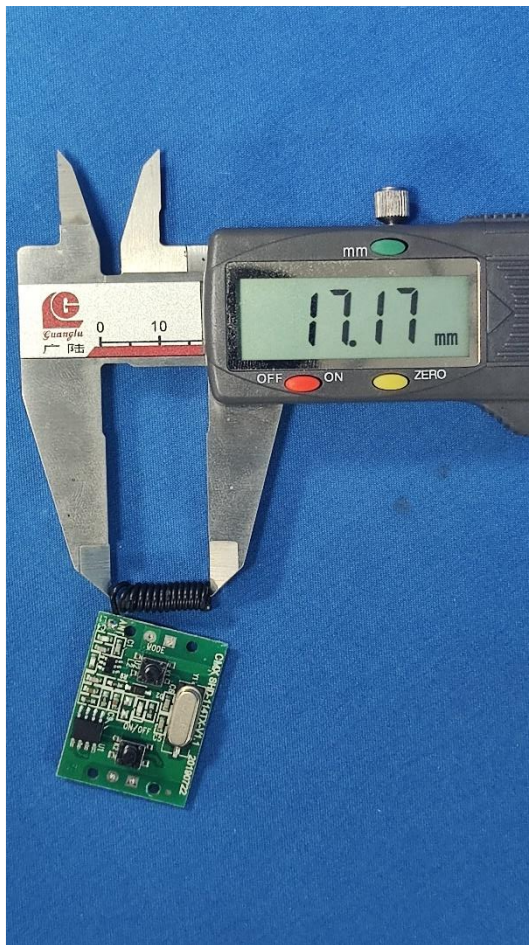


1. Antenna Description:

| | |
|-----------------|--|
| Antenna type | Spring antenna |
| Model | GZC-ZDB-0068 |
| Frequency range | 433.938-433.938MHz |
| Manufacturer | Guangzhou Chengrenzhimei Trading Co., Ltd. |
| ANT Peak Gain | 1.73 dBi |

2. Antenna Photo:

Length :17.17mm
Width:5.26mm



3. Test Equipment & Conditions

3.1 Test instrument

VSWR is tested using Agilent E5071B connected to a hand mechanism, and the status is free space.

3.2 Test environment and methods

Dark room specifications: ETS-743

TD-SCDMA test equipment: StarPoint SP6010/Agilent 8960

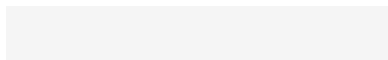
LTE-TDD/FDD-SCDMA test equipment: StarPoint SP8011/CMW500

WCDMA/GSM/CDMA test equipment: Agilent 8960

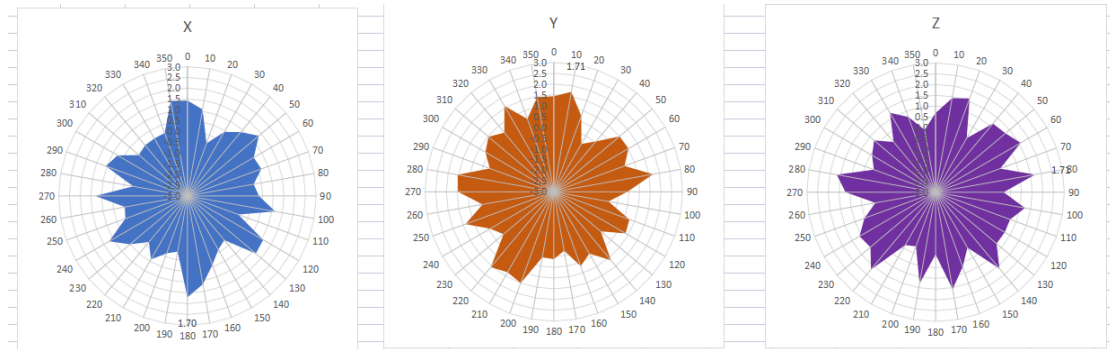
Passive efficiency testing equipment: Agilent Technologies E5071B



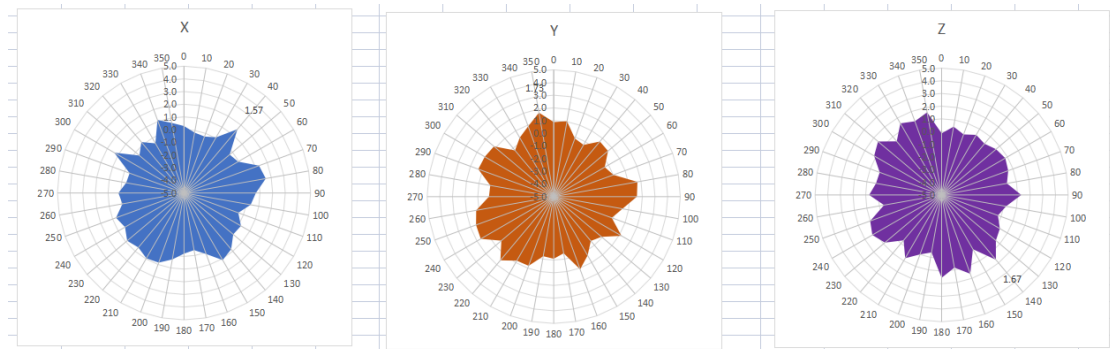
4 . Antenna Radiation Pattern



2400MHz



2450MHz



2500MHz

