

## 1. Antenna Description:

Antenna type	PIFA antenna
Model	DL-300 Wireless-Ant 1
Frequency range	5180-5240MHz
Manufacturer	Guangdong Launca Medical Device Technology Co., Ltd.
ANT Peak Gain	1.25 dBi

## 2. Antenna Photo:

Length :27.70mm  
Width:8.64mm



### 3. Test Equipment & Conditions

#### 3.1 Test instrument

VSWR is tested using Agilent E5071B connected to a hand mechanism, and the status is free space.

#### 3.2 Test environment and methods

Dark room specifications: ETS-743

TD-SCDMA test equipment: StarPoint SP6010/Agilent 8960

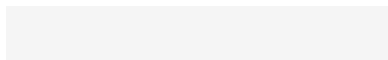
LTE-TDD/FDD-SCDMA test equipment: StarPoint SP8011/CMW500

WCDMA/GSM/CDMA test equipment: Agilent 8960

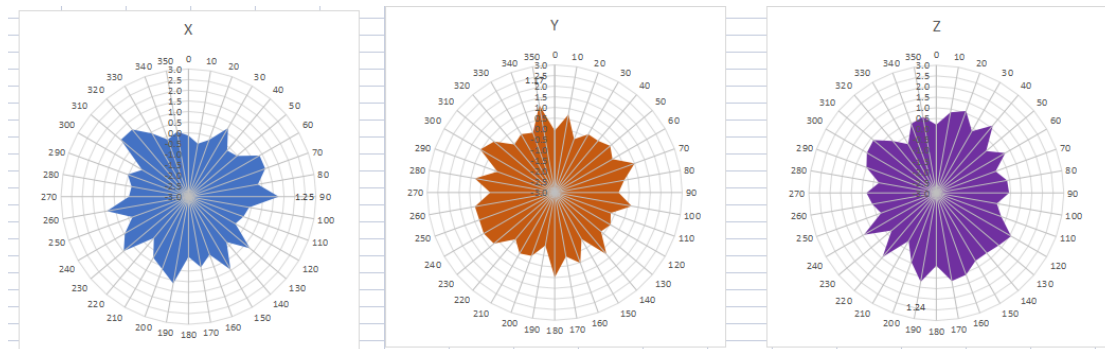
Passive efficiency testing equipment: Agilent Technologies E5071B



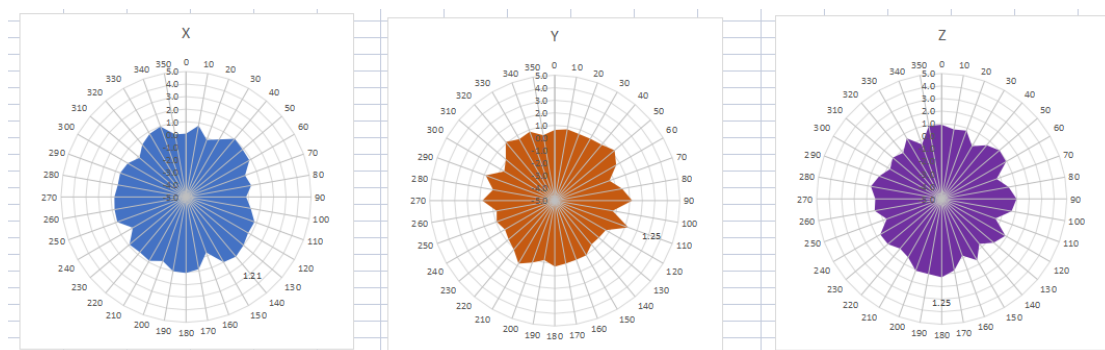
### 4 . Antenna Radiation Pattern



## 2400MHz



## 2450MHz



## 2500MHz

