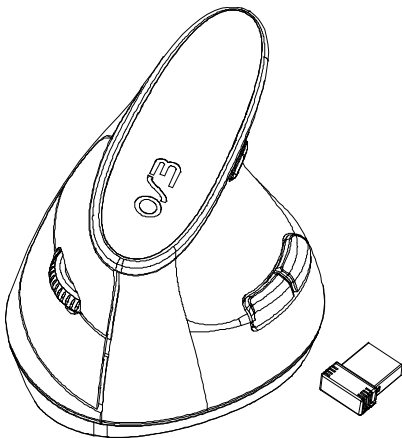




Dino Wireless Mouse

OWNER'S GUIDE

Ver.1.0



CAUTION: To use this product properly, please read the user's guide before installing.

Federal Communication Commission Interference Statement

This equipment has been tested and found to comply with the limits for a Class B digital device, pursuant to Part 15 of the FCC Rules. These limits are designed to provide reasonable protection against harmful interference in a residential installation. This equipment generates, uses and can radiate radio frequency energy and, if not installed and used in accordance with the instructions, may cause harmful interference to radio communications. However, there is no guarantee that interference will not occur in a particular installation. If this equipment does cause harmful interference to radio or television reception, which can be determined by turning the equipment off and on, the user is encouraged to try to correct the interference by one of the following measures:

- Reorient or relocate the receiving antenna.
- Increase the separation between the equipment and receiver.
- Connect the equipment into an outlet on a circuit different from that to which the receiver is connected.
- Consult the dealer or an experienced radio/TV technician for help.

FCC Caution: Any changes or modifications not expressly approved by the party responsible for compliance could void the user's authority to operate this equipment.

This device complies with Part 15 of the FCC Rules. Operation is subject to the following two conditions: (1) This device may not cause harmful interference, and (2) this device must accept any interference received, including interference that may cause undesired operation.

Radiation Exposure Statement:

The product comply with the FCC portable RF exposure limit set forth for an uncontrolled environment and are safe for intended operation as described in this manual. The further RF exposure reduction can be achieved if the product can be kept as far as possible from the user body or set the device to lower output power if such function is available.

IC RSS210 INSTRUCTION

This device contains licence-exempt transmitter(s)/receiver(s) that comply with Innovation, Science and Economic Development Canada's licence-exempt RSS(s). Operation is subject to the following two conditions:

1. This device may not cause interference.
2. This device must accept any interference, including interference that may cause undesired operation of the device.

CAN ICES-3 (B) / NMB-3 (B)

DIRECTIVE CNR210 D'IC

L'émetteur/récepteur exempt de licence contenu dans le présent appareil est conforme aux CNR d'Innovation, Sciences et Développement économique Canada applicables aux appareils radio exempts de licence. L'exploitation est autorisée aux deux conditions suivantes:

1. L'appareil ne doit pas produire de brouillage;
2. L'appareil doit accepter tout brouillage radioélectrique subi, même si le brouillage est susceptible d'en compromettre le fonctionnement.

CAN ICES-3 (B) / NMB-3 (B)

OTBDM-001G FCC ID: 2BBQBOTBDM-001G

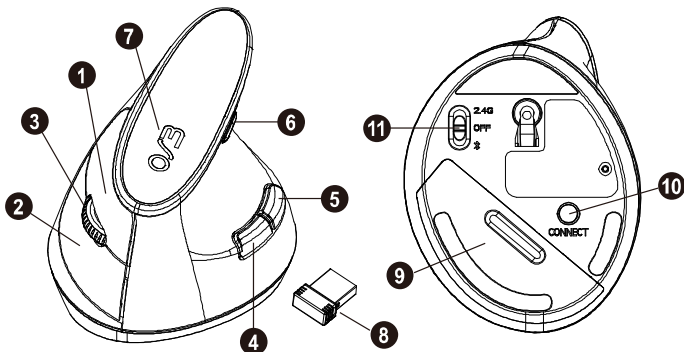
OTBDMR-001 FCC ID: 2BBQBOTBDMR-001

OTBDM-001G IC: 30795-OTBDM001G

OTBDMR-001 IC: 30795-OTBDMR001

Functional Introduction

Mouse Buttons



1. Left button
2. Right button
3. Scrolling Wheel
4. Forward
5. Backward
6. DPI Switch button

7. LED Indicator
8. Nano Receiver
9. Battery Cover
10. Connect Button
11. 2.4G / OFF / BT Switch

Forward

Press this button to view the next page in your Internet browser

Backward

Press this button to view the previous page in your Internet browser

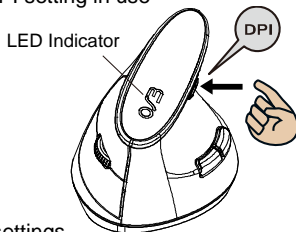
DPI Switch

The LED indicator will light up when you plug the mouse into the USB port. The brightness of the indicator indicates the DPI setting in use.

a) 5 adjustable DPI settings.

The number of blinks indicates the DPI setting in use

DPI	# of Blinks
800 dpi	1
1200 dpi	2
1600 dpi	3
2000 dpi	4
2400 dpi	5



b) The default setting is 800 DPI.

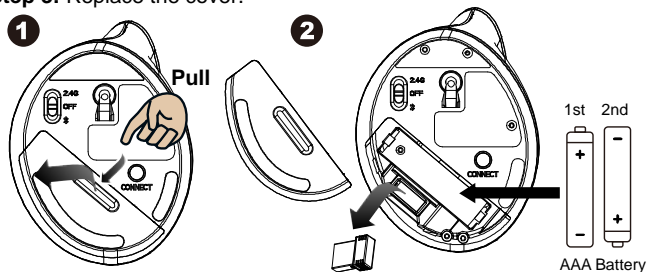
You can easily switch between DPI settings.

Battery and Power Management:

Step 1: Take the battery cover off.

Step 2: Insert the batteries as shown inside the battery compartment.

Step 3: Replace the cover.



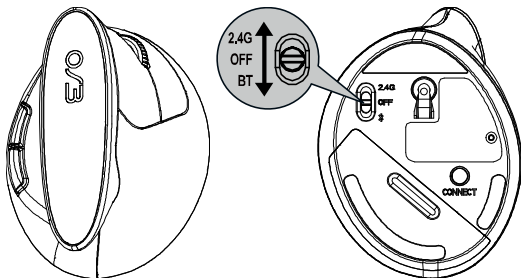
Step 3: Replace the cover.

Step 4: Turn on power switch

****Warning:**

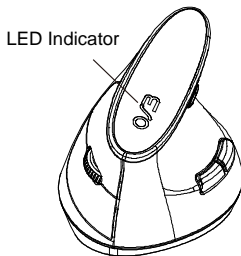
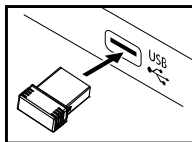
*Please insert the battery with the correct position according to the instruction labeled on the mouse.

Switch Connection Channel



Connect via USB nano receiver

- 1.Plug nano receiver into the USB A port on your computer
- 2.Mouse switch to 2.4G mode and press Connect Button



*2.4G Mode



Red LED is on for 10 Sec.
Power ON



Red LED Blinking

Pairing(LED OFF when paired or failed after 10 Sec






Red LED Blinking for 10 Sec

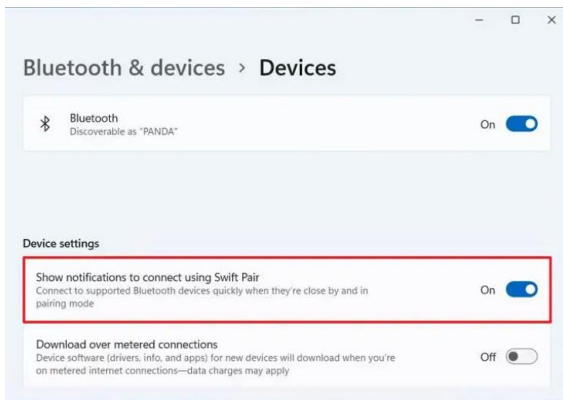
Low battery Warning

Connect via Bluetooth in windows

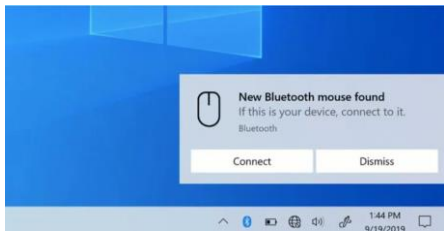
1. On your PC, select Start  > Settings  > Bluetooth & devices 
> Turn on Bluetooth > Add device > Bluetooth.
2. Mouse switch to BT mode and press Connect Button.
3. Find "BT5.1 Mouse" and press connect.

Swift pair

On your PC, select Start  > Settings  > Bluetooth & devices  > View more devices > Turn on the Show notifications to connect using Swift Pair.

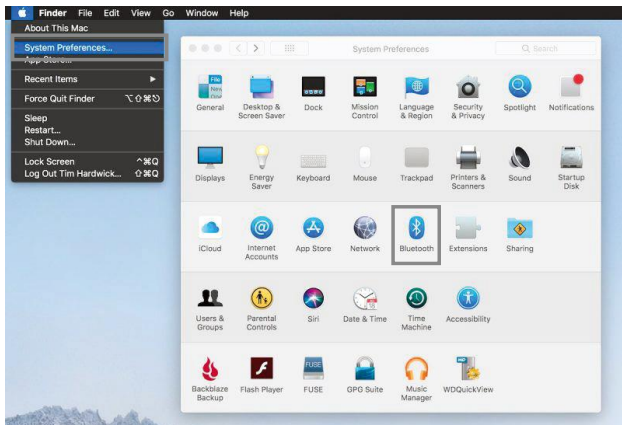


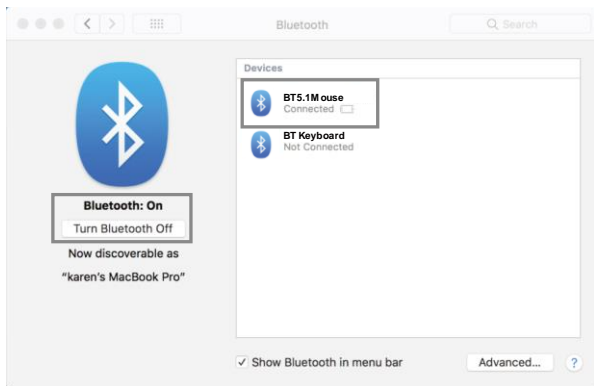
2. Mouse switch to BT mode and press Connect Button.
3. Windows will show a notification "BT5.1 Mouse" and Selecting "Connect" starts pairing.



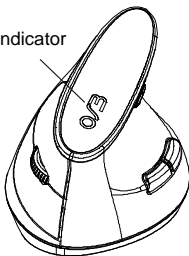
Connect via Bluetooth in Mac

1. Click on "Apple menu" (top left corner of your screen).
2. Go to System Preferences-> Bluetooth-> Turn Bluetooth on to set up Bluetooth device and find "BT5.1 Mouse" press connect.





LED Indicator



* Bluetooth Mode



Red LED is on for 10 sec.
Power ON



Red LED Blinking
Pairing(LED OFF when paired or failed after 10 min)



Red LED Blinking for 10 Sec
Low battery Warning

Power saving features:

To conserve the battery power, the mouse offers power management functions as below:

The mouse goes into “Saving Mode” after inactivity. There may be a slight delay while the mouse re-establishes Bluetooth connection from power saving or sleeping mode.

Establishing a Bluetooth Connection

The Bluetooth mouse can work in any Bluetooth environment. Before connecting your Bluetooth mouse with your computer, make sure your computer has a working Bluetooth configuration with Human Interface Device (HID) profile. If your computer does not support Bluetooth, you need to obtain and install a commercially available Bluetooth dongle which converts your computer to a Bluetooth environment.

Troubleshooting

A. Mouse does not work upon installation or is not detected

Try one or more of the following:

- Make sure the batteries are installed correctly and turn the switch on. Replace a fresh set of batteries if it still does not work.
- Verify that the computer is Bluetooth enabled.
- Press the connection button to reset the Bluetooth connection between your mouse and your computer. Make sure it has been detected by the Operating Systems properly.

B. The screen cursor does not move properly

If your screen cursor lags behind the movement, then your Bluetooth connection may not be able to transmit all of the data from the mouse with the necessary speed. This may be caused by interference from other radio sources, obstructions in the radio wave path, excessive

distance from the computer, or a combination of the above.

※ Try the following actions to improve your Bluetooth connection and optimize your mouse performance:

- Remove any metallic objects from the line of sight between your computer and the Bluetooth mouse.
- If you are using a computer with a built-in Bluetooth antenna, try reorienting the computer until you get a better data rate.
- If you are using a Bluetooth dongle, use a USB extension cable and place the Bluetooth dongle onto your desktop or somewhere in sight of your Bluetooth mouse.
- Move the mouse closer to your Bluetooth dongle.
- Turn off the mouse and turn it on again for better connection.
- Disconnect any Bluetooth audio devices, such as headsets, that may be connected to your computer.
- Switch off any other devices operating in the 2.4 GHz radio spectrum, such as Wi-Fi network, mobile telephones, etc., or move their antennas further away from your computer.