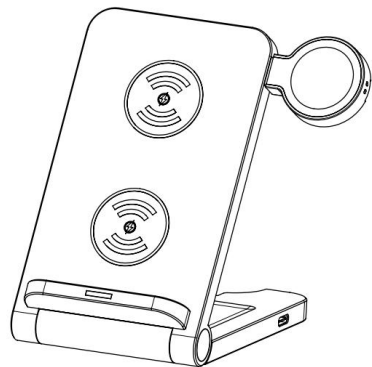


3 IN 1 15W Fast Charging Wireless Charger

MODEL: 6958



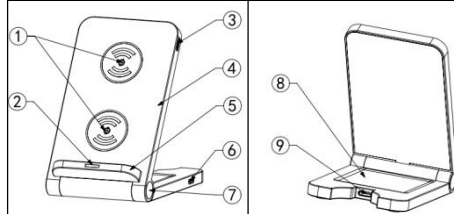
Product Specification

Product Name	15W Fast Charging Wireless Charger
Model Number	6958
Input -Type C	PD20W
Wireless iPhone Output 1	5W/7.5W/10W/15W
Wireless Airpod Output 2	5W
Type-C1 Output	5V/1A
Type-C2 Output	5V/1A
Wireless iWatch Output 3	3W
Manufacturer: Shenzhen Odebo Technology Co.,Ltd	

Package Included

1* Wireless Charger
1* Portable Watch Charger and Airpod Charger
1* Power Cord and Adapter
1*User Manual

Product Appearance



1. Wireless Charge Area for Phone

2. Power Indicator

3. Wireless Input for iwatch

4. Wireless Charger Main Body

5. Phone Stand

6. Type-C Output

7. Rotating Shaft

8. Wireless Charge Area for TWS Earphone

9. Input -Type C

Note: To ensure charging 3 devices safely and efficiently, you must use QC3.0 adapter and quick charge cable, (if not use the appropriate adapter and quick charge cable, the charger may not charge phone fast, or may not charge 3 devices simultaneously, or may even damage the charger).

Product Introduction

The wireless charger stand is compatible with your phone[supporting wireless charging], iWatch and AirPods [or other TWS earbuds the case of which supports wireless charging]and can charge them simultaneously Say goodbye to the messy cords and use the stand to make your desk and nightstand neatly and Jorganized.

LED Light Ring Instructions

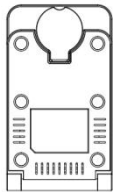
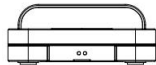
1. Blue and Red light flash for 3s: Wireless charger Power on.

2. Blue light is on: Standby mode or not charging the phone.

3. Red light is on: Wireless charging the phone.

4. Blue light flash: Foreign body is detected, over temperature, TX overvoltage or TX under voltage, the phone charging will stop automatically.

Ease to Use



1. Foldable wireless fast charger saves space volume when you're not using it. Easy to carry and don't take up space in your bag.



2. Wireless fast charger simple unfolding and using.

Operation Steps

1. Before using the wireless charger, unplug the watch charger from the Type-C input port ⑨, then insert the watch charger into Type-C output ③ or Type-C output ⑥.

2. Connect the charger to a QC3.0 adapter through a Type-C input port ⑨ and a quick charging cable to switch on the power.

3. Put your phone on and charger.

4. Put the apple watch on and suck it up to charge (adjust the watch band to minimum length for better charging).

5. Put the charging case of your earphones on the earphone charging area to charge.

Kindly Remind: Please don't use Type-C output ③ or Type-C output ⑥ simultaneously.

Attention

1. Please keep the charger away from water or other liquid.
2. If you need to clean the charger, please make sure it is not connected with the power source.
3. Don't touch the charging station with a wet hand, or you may get an electric shock.
4. Please don't use Type-C output ③ or Type-C output ⑥ simultaneously.
5. Don't use the charging station when it is short-circuit.
6. For safety concern, please keep charging stations away from children.
7. Please kindly note that the Apple Watch charger and earphone's charging cable are not included.
8. Using environment temperature remains 0-45℃.
9. **Charging environment of smart phone will be ≤55 (≤131°F).**
10. **Please ensure that the thickness of phone case is less than 3mm[0.12"].**

Warranty Policy and Support

1. Thank you for your support and purchasing our product! Say goodbye to cluttered cords and keep your desk and nightstand neat and organized with the stand.

2. We are strived to develop and manufacturing product with superior performance and 100% customer satisfaction. All of our products come with a 12-month warranty from date of purchase.

3. Please kindly note that our warranty does not cover any damage caused by human factors, such as the owner modifying, attempting to fix, and etc.

4. Our warranty covers only the original purchaser of the product. The limited warranty is not transferable to subsequent owners or purchasers of this product.

5. If you have any quality problems, please contact us immediately at customerservice@alltripal.com

This device complies with part 15 of the FCC Rules. Operation is subject to the following two conditions: (1) This device may not cause harmful interference, and (2) this device must accept any interference received, including interference that may cause undesired operation.

Any Changes or modifications not expressly approved by the party responsible for compliance could void the user's authority to operate the equipment.

Note: This equipment has been tested and found to comply with the limits for a Class B digital device, pursuant to part 15 of the FCC Rules. These limits are designed to provide reasonable protection against harmful interference in a residential installation. This equipment generates uses and can radiate radio frequency energy and, if not installed and used in accordance with the instructions, may cause harmful interference to radio communications. However, there is no guarantee that interference will not occur in a particular installation. If this equipment does cause harmful interference to radio or television reception, which can be determined by turning the equipment off and on, the user is encouraged to try to correct the interference by one or more of the following measures:

- Reorient or relocate the receiving antenna.
- Increase the separation between the equipment and receiver.
- Connect the equipment into an outlet on a circuit different from that to which the receiver is connected.
- Consult the dealer or an experienced radio/TV technician for help.

This equipment complies with FCC radiation exposure limits set forth for an uncontrolled environment. This equipment should be installed and operated with minimum distance 20cm between the radiator & your body.