

**RADIO OPERATION:**

Turn on the power switch , is bluetooth mode, press "M" button,then is radio mode, press "▶||" button 2 seconds,it will search and save the surrounding station automatically, after that ,you can press◀v- or ▶v+button to select the radio program you prefer.

**USB/TF OPERATION:**

During radio program playing, insert USB/TF card, it will automatically switch to play from USB/TF card. You can press◀v- or ▶v+buttons on radio to select the music you need.

**LITHIUM BATTERY:**

How to use lithium battery  
1.The unit built in lithium battery,please note that first time need to charge 8 hours.  
2.Normally, If use lithium battery, it can operate unit in following time.  
If use for USB/TF, it can last over 240minutes  
If use for RADIO, it can last over 240 minutes  
In order to prolong the battery life and product normal use, please keep the charging time with in 8 hours.

**INTERNAL BLUETOOTH FUNCTION OPERATION**

Turn on the power switch , is "BLUETOOTH MODE", then turn on the bluetooth of cellphone or other mobile device with bluetooth function, start to search a bluetooth named " CW6685" and pair with it , after successful pairing, it will beep. Now cellphone or other mobile device can play the music through bluetooth on radio. You can select, play and pause the music by pressing◀v- or ▶v+ buttons on radio or cellphone or other mobile devices. If you want to stop using bluetooth function just need to turn off the bluetooth incellphone or other mobile devices.

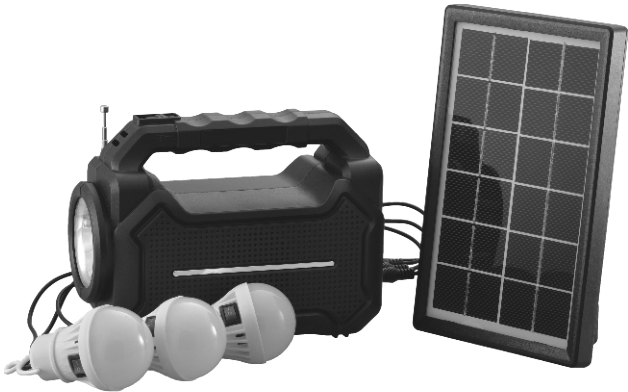
**TWS FUNCTION**

After phone and host1 connected successfully, open host2 (same model) and enter bluetooth mode to play the music. Please press ▶|| button both(host 1 and host 2) for 2 seconds at the same time. After successfully paired (prompt tone will rise on speaker), it will begin stereo broadcasting.

**POWER BANK FUNCTION:**

The unit can charging the mobile phone and other mobile device.

<b>SPECIFICATION:</b>	
Output power:3W	Sensitivity index: FM: 15db ±5db
Speaker: 57MM 2Ω 5W	
Noise rate: ≥45DB	
Receiving performance index:	Noise rate: FM: ≥45db
FM:87.5-108 MHz	



**FCC Statement**

This equipment has been tested and found to comply with the limits for a Class B digital device, pursuant to Part 15 of the FCC Rules. These limits are designed to provide reasonable protection against harmful interference in a residential installation. This equipment generates uses and can radiate radio frequency energy and, if not installed and used in accordance with the instructions, may cause harmful interference to radio communications. However, there is no guarantee that interference will not occur in a particular installation. If this equipment does cause harmful interference to radio or television reception, which can be determined by turning the equipment off and on, the user is encouraged to try to correct the interference by one or more of the following measures:

- Reorient or relocate the receiving antenna.
- Increase the separation between the equipment and receiver.
- Connect the equipment into an outlet on a circuit different from that to which the receiver is connected.
- Consult the dealer or an experienced radio/TV technician for help.

This device complies with part 15 of the FCC Rules. Operation is subject to the following two conditions: (1) This device may not cause harmful interference, and (2) this device must accept any interference received, including interference that may cause undesired operation.

Changes or modifications not expressly approved by the party responsible for compliance could void the user's authority to operate the equipment.

This equipment complies with FCC radiation exposure limits set forth for an uncontrolled environment.

This equipment should be installed and operated with minimum distance 20cm between the radiator & your body.