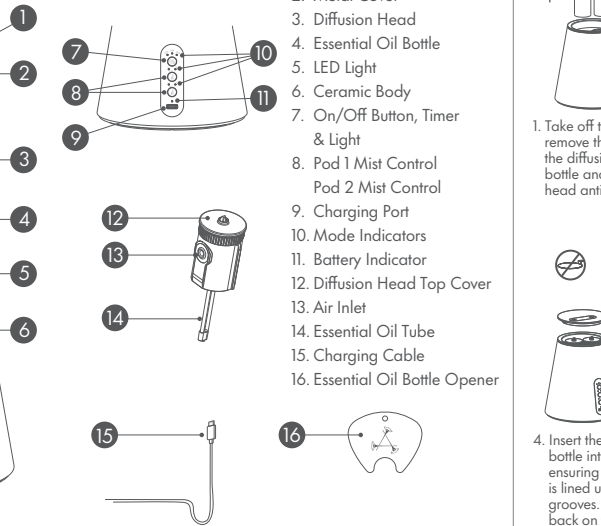


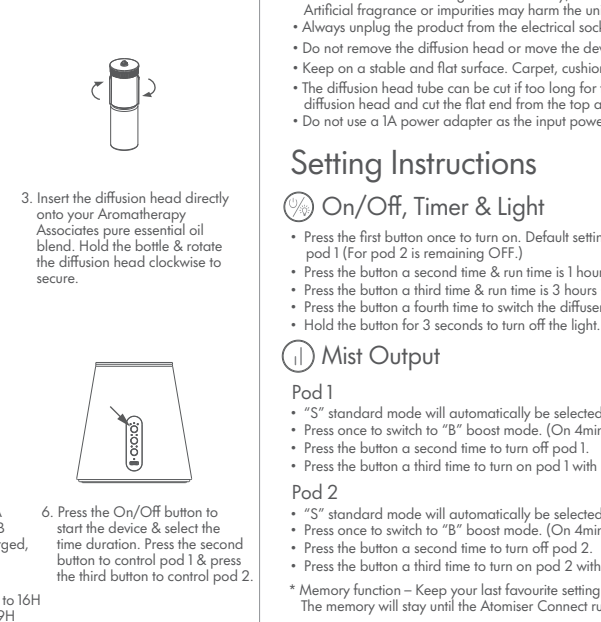


ATHERAPY DIFFUSER USER MANUAL  
PLEASE READ CAREFULLY BEFORE USE



- 
1. Insert the top cover and card. Pull up the card to hold the diffusion disc in place to remove.
2. Insert the essential oil bottle into the diffuser. Pop the plastic dropper off.
- \*Only using  $\geq 2A$  power adapter

- Always



preference when you turn on/off the device.  
runs out of battery.

- battery (flashing indicator light)

- ection



- time.  
signal connection.  
existing
- schedules, use the guided  
essential oil blends.
1. Fill an empty  
Associates pu

<p>ivate a factory reset. reated through the app.</p>	<p>provided with under 75% co</p>
---	---------------------------------------

tion is subject to the following two conditions:

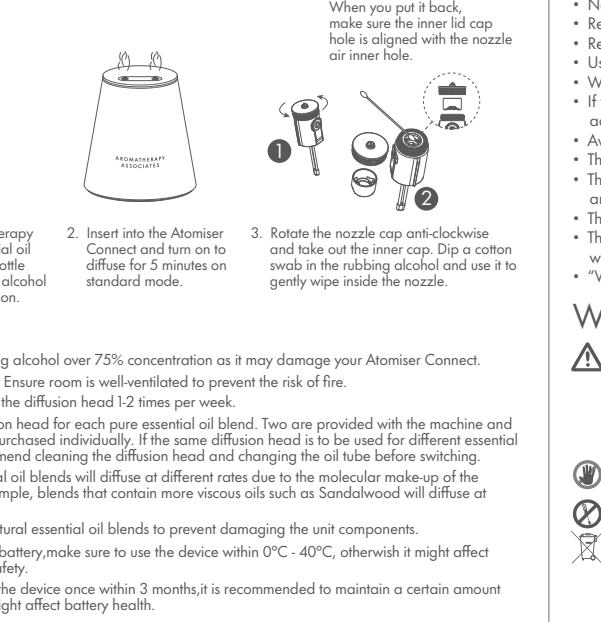
- Never use with flammable liquids or gases.
- Alcohol is flammable.
- For best results, use a Class B fire extinguisher.

for a Class B digital device, pursuant to Part 15 of the FCC rules, is that it does not cause harmful interference in a residential installation. This device has been tested and found to comply with the interference requirements, provided it is not installed and used in accordance with the instructions. There is no guarantee that interference will not occur in a particular installation.

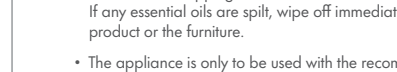
- Different pure essential oils

- Use only with a slightly slow
- This product is not for use with the battery life

- Make sure to check the status of battery level



- unplugged from the USB, electrical socket and malfunction may occur.
- This product must be disconnected from the power source.
- Please avoid dripping essential oils onto the exposed surface of the product.
- If any essential oils are spilt, wipe off immediately with a soft cloth.
- The product or the furniture.
- The appliance is only to be used with the recommended power supply.



- Recommended vaporizing medium.  
Toxic or fire risk.
- Inhaling the mist from the spout is not
- If a medical condition should seek advice  
near windows for ventilation if you start to feel
- Manufacturer:
- Product V

...should always be handled with care, including the

et hands, or let water or other liquids spill

- do not place the product in the areas listed

- Damage due to
- Damage of non-
- Failure to provide

essential oils, such as Sandalwood or Vetivert on  
a machine.

- when time is tight. Boost mode should only be

Date of purchase:

omiser Connect Main unit weight:

1100g  
Up to 120m<sup>2</sup>  
Indoor  
30mins /1H/3H  
USA

Time of purchase	The device is on but the screen is off	Difficult to see
------------------	--	------------------

of purchase	The device is on but there is no scent	Diffusion
at maintenance:		attach

				The c
--	--	--	--	-------

- |  |  |  |                 |
|--|--|--|-----------------|
|  |  |  | the c<br>the e  |
|  |  |  | Using<br>oil th |

n mentioning		Oil p
--------------	--	-------

- |  |  |                 |
|--|--|-----------------|
|  |  | second head     |
|  |  | Chor with diffu |

<div style="display: flex; align-items: center;"> <div style="width: 100px; height: 100px; border: 1px solid black; margin-right: 10px;"></div> <div> <p>1. <b>Introduction</b></p> <p>2. <b>Methodology</b></p> <p>3. <b>Results</b></p> <p>4. <b>Conclusion</b></p> </div> </div>	<div style="display: flex; align-items: center;"> <div style="width: 100px; height: 100px; border: 1px solid black; margin-right: 10px;"></div> <div> <p>1. <b>Introduction</b></p> <p>2. <b>Methodology</b></p> <p>3. <b>Results</b></p> <p>4. <b>Conclusion</b></p> </div> </div>
---	---

tions, please follow our troubles

shooting guidelines listed below.

<p>cord /USB and re-connect</p>	
<p>A power adapter to charge</p>	
<p>ing cable into the charging port or socket or USB port to charge.</p>	
<p>sion head and reinstall ure the diffusion air inlet is tion.</p>	
<p>y essential oil bottle, add into the bottle or change</p>	
<p>on head &amp; swap to using a blend.</p>	
<p>pe into the diffusion head</p>	
<p>nt pod and choose the ffusion.</p>	



## AROMATHERAPY EXPERIENCES