

65mmX85mm

XG16



使用说明书

请提前阅读使用说明书，方便后续使用

产品参数

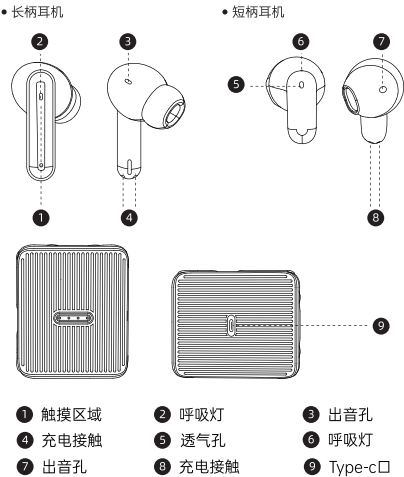
产品名称	XG16
蓝牙版本	5.4
传输距离	≧10M
喇叭直径(长柄)	Φ10mm
喇叭直径(短柄)	Φ13mm
充电口	Type-C
频率响应	20Hz ~ 20KHz
充电盒电池	3.7V 300mAh
耳机电池	3.7V 30mAh
充电时间（充电盒）	1.5-2H
充电时间（耳机）	0.8H
播放时间（耳机）	5H
待机时间（耳机）	30H（无连接）

包装清单

真无线蓝牙耳机	*2
耳机充电仓	*1
Type-c充电线	*1
说明书	*1

操作说明

1.基础说明



2.模式选择

电话模式

拒接来电:长按2s
来电:单击接听，再单击挂断

音乐模式

左耳双触:播放上一曲
右耳双触:播放下一曲
单触:播放/暂停

对耳模式

左耳三触:音量降低
右耳三触:音量增加

对耳模式

开机:长按3S
关机:长按5S
唤醒Siri:长按右耳2s

3.操作方式

模式	操作描述
开机	1、耳机从充电仓取出自动开机； 2.长按 MFB 键 3S。
关机	1、放入充电仓自动关机充电； 2、长按 MFB 键 5S。
手机配对	打开手机蓝牙，扫描新设备，找到“XG16”，点击配对即可。
配对时间	配对模式下超过5Min 未与手机进行配对，耳机自动关机
自动回连	手机蓝牙打开状态下，耳机开机后会自动回连上次已配对过的设备。
低电量提示	当电池电量低于 3.2V 时，低电量提示音 30S循环一次，电量低于 3.0V 时低电关机
主从自由切换	首次连接成功后,可任意切换单、双耳使用，无须重新配对连接。

注意事项

提示

1. 使用产品前请仔细阅读本使用说明书并请妥善保管
2. 首次使用，请先将本产品充满电
3. 如果产品长期（超过 1 个月）不用，请对其充电；
4. 若手机无法搜索蓝牙耳机，请确认蓝牙耳机是否处于“配对状态” 若长时间未进行配对或连接，蓝牙耳机配对功能将关闭，请重新开启蓝牙耳机至“配对状态”若手机程序出错，请重启手机；若蓝牙耳机程序出错，请重启蓝牙耳机。

警告

1. 请勿以任何理由拆除或维修改装耳机，否则可能会导致起火、电子元件击穿甚至彻底损坏本产品
2. 请勿将设备置于温度过低或过高（0℃以下或 45℃以上）的环境下
3. 请避免靠近儿童或动物的眼睛使用设备指示灯
4. 请勿在雷暴天气下使用该设备，雷暴可导致设备工作不正常并增加触电的危险
5. 请勿用油及其他挥发液体擦拭本产品
6. 请勿将设备接触液体弄湿

保修说明

尊敬的客户，你好!

承蒙惠顾本公司的产品，为了保证你的利益，请您在购买本产品后，仔细阅读说明书及以下内容:（下列情况不属于保修范围，本公司可提供有偿服务，敬请注意）

- 1、未按使用说明书操作、使用、保管，导致本产品故障和损坏。
- 2、擅自涂鸦，撕毁产品包装以及条码。
- 3、擅自改动出厂设置和拆机修理。
- 4、意外因素或者人为导致产品损坏，如输入不合格的电压，高温、进水、破坏、产品严重氧化或者生锈等。
- 5、因不可抗拒，如地震、火灾、水灾、雷击等导致的故障和损坏。

XG16



OPERATING INSTRUCTIONS

Please read the instruction manual in advance to facilitate subsequent use

Product Parameter

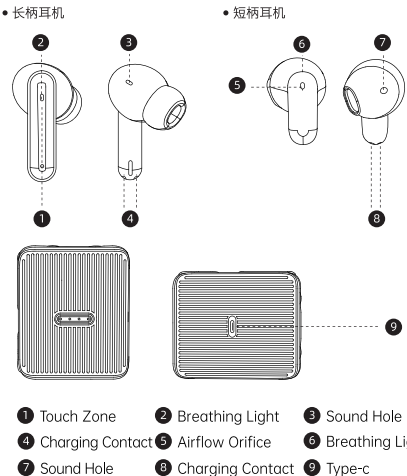
Product Name	XG16
Bluetooth Version	5.4
Transmission Distance	≧10M
Horn Diameter (Long Shank)	Φ10mm
Horn Diameter (Short Shank)	Φ13mm
Charging Port	Type-C
Sensitivity	20Hz ~ 20KHz
Charging Case Battery	3.7V 300mAh
Headphone Battery	3.7V 30mAh
Charge Time (Charging Case)	1.5-2H
Charge Time (Headphones)	0.8H
Playback time (headphones)	5H (No connection)
Standby time (headphones)	30H

Packing List

True Wireless Bluetooth Headset	*2
Headphone Charging Compartment	*1
Type-c charging cable	*1
Instruction manual	*1

Operating Instructions

1. Basic description



2. Mode selection

telephone mode

Reject call:Long press 2s
Incoming call:click to answer, then click to hang up

In-ear mode

Three touches on the left ear: Volume down
Three touches on the left ear: Volume down

Music Mode

Double-touch in the left ear:Play the previous song.
Right ear double touch:Play next song
Single touch:Play/Pause

In-ear mode

Switch on:Long press 3S
Switch off:Long press 5S
Wake up Siri:Long press right ear 2s

3. Operation mode

modes	Operation Description
Power on	1. The headphones are taken out of the charging bin and automatically turn on. 2. Long Press MFB key 5s.
Turn off	1. Put it into the charging bin and charge it automatically. 2. Press MFB key for 5s.
Cell phone pairing	Turn on your Bluetooth, scan for new devices, find“XG16” and click on match.
Pairing time	In pairing mode, if the phone is not paired for more than 5 minutes, the headset will shut down automatically
Automatic reconnect	When the Bluetooth is turned on, the headset will automatically connect back to the last paired device.
Low power tips	When the battery power is less than 3.2 V, the low-power Sound 30S cycle, low power off when the power is less than 3.0 V
Master switch from free	After the first connection is successful, the single and double ears can be switched at will without the need to re-pair the connection.

Caveat

Draw Attention To Sth.

1. Please read this instruction manual carefully before using the product and keep it in a safe place.
2. Please fully charge the product for the first time use.
3. If the product is not used for a long time (more than 1 month), please charge it. 4;
4. If your mobile phone can not search for the Bluetooth headset, please make sure the Bluetooth headset is in the 'pairing state' If there is no pairing or connection for a long time, the Bluetooth headset pairing function will be turned off, please turn on the Bluetooth headset again to the 'pairing state' If the mobile phone program error, please restart the mobile phone; If the Bluetooth headset is not connected, please restart the mobile phone. If there is an error in the mobile phone programme, please restart the mobile phone; if there is an error in the Bluetooth headset programme, please restart the Bluetooth headset.

Warnings

1. Do not dismantle or modify the headset for any reason, as this may result in fire, breakdown of electronic components or even complete damage to the product.
2. Do not expose the device to temperatures that are too low or too high (below 0℃ or above 45℃).
3. Avoid using the light near the eyes of children or animals.
4. do not use the device in thunderstorms, which may cause the device to operate improperly and increase the risk of electric shock.
5. Do not wipe the product with oil or other volatile liquids.
6. Do not wet the device with liquids.

Warranty Description

Dear customer, hello!

I am grateful for your patronage of our products, in order to ensure that your interests, please read the instructions and the following content carefully after you buy this product: (The following circumstances do not belong to the scope of the warranty, the company can provide paid services, please note)

- 1, not in accordance with the instructions for operation, use, storage, resulting in this product failure and damage.
- 2, unauthorised graffiti, tearing the product packaging and barcode.
- 3, unauthorised changes to the factory settings and dismantle the machine for repair.
- 4, accidental factors or human-induced damage to the product, such as the input of unqualified voltage, high temperature, water, damage, serious oxidation or rust of the product.
- 5, due to irresistible, such as earthquakes, fires, floods, lightning strikes and other causes of failure and damage.

FCC STATEMENT

1. This device complies with Part 15 of the FCC Rules. Operation is subject to the following two conditions:

- (1) This device may not cause harmful interference, and
 - (2) This device must accept any interference received, including interference that may cause undesired operation.
2. Changes or modifications not expressly approved by the party responsible for compliance could void the user's authority to operate the equipment.

NOTE: This equipment has been tested and found to comply with the limits for a Class B digital device, pursuant to Part 15 of the FCC Rules. These limits are designed to provide reasonable protection against harmful interference in a residential installation. This equipment generates uses and can radiate radio frequency energy and, if not installed and used in accordance with the instructions, may cause harmful interference to radio communications. However, there is no guarantee that interference will not occur in a particular installation. If this equipment does cause harmful interference to radio or television reception, which can be determined by turning the equipment off and on, the user is encouraged to try to correct the interference by one or more of the following measures:

Reorient or relocate the receiving antenna.
Increase the separation between the equipment and receiver.
Connect the equipment into an outlet on a circuit different from that to which the receiver is connected.