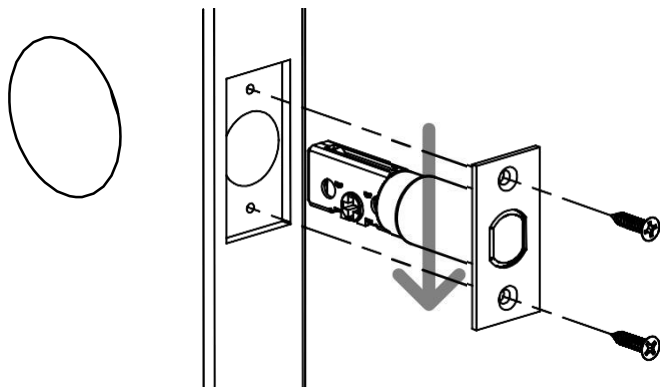


INSTALLATION INSTRUCTION

MOTORIZED DEADBOLT



1. PREPARE DOOR & INSTALL LATCH

- Prepare door according to template.
- Retract deadbolt
- Install adjustable latch with cross slot for tailpiece toward bottom.
- Secure with (2) small combo screws.

2. INSTALL OUTSIDE TRIM ASSEMBLY

While looking at the back of the chassis (Figure1)

- **If latch is to the LEFT:** Rotate tailpiece clockwise to stop in vertical orientation
- **If latch is to the RIGHT:** Rotate tailpiece counter-clockwise to stop in vertical orientation.

Install chassis/escutcheon assembly from outside of door (Figure 2) – feeding reader wire through door hole under the latch.

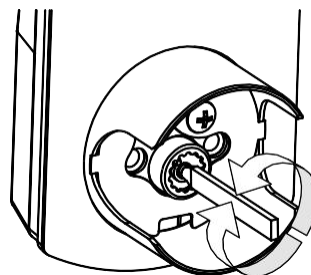


Figure 1

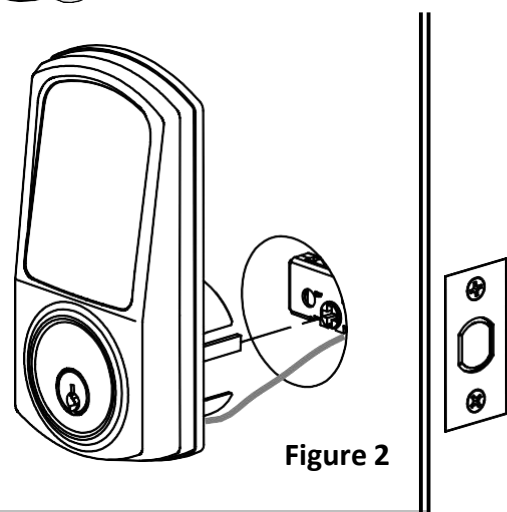
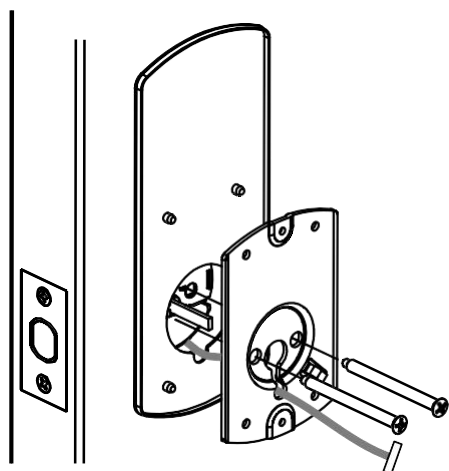


Figure 2



3. INSTALL GASKET & INSIDE MOUNTING PLATE

- Route wire through slot in bottom of gasket and mounting plate
- Install rubber gasket and inside mounting plate. Ensure both sides are vertical
- Secure with (2) pan head screws.

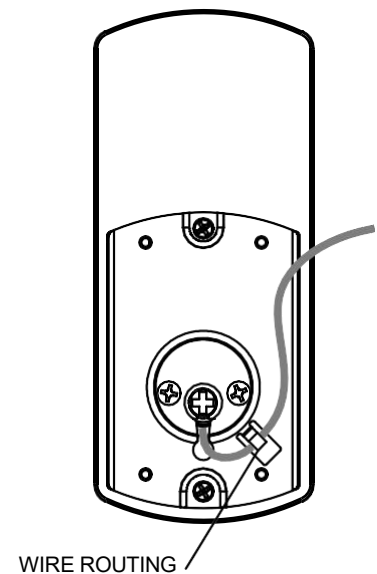
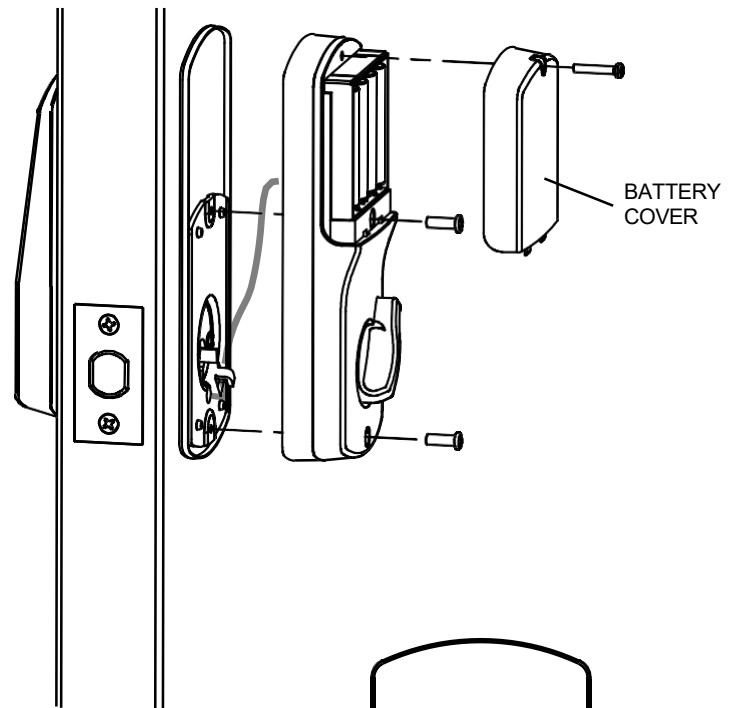
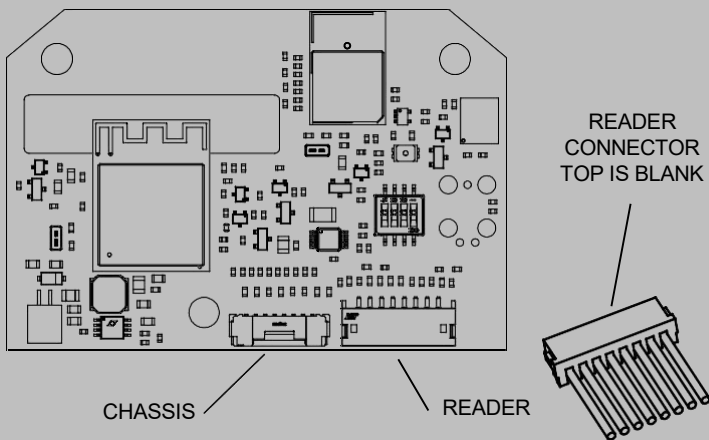
INSTALLATION INSTRUCTIONS

MOTORIZED DEADBOLT



4. INSTALL INSIDE TRIM AND BATTERIES

- Plug reader wire into socket on control board on back of escutcheon, route wire through hook in mounting plate as shown, install escutcheon onto door.
 - Take care to keep from pinching wire.
- Verify that thumb turn properly operates deadbolt latch smoothly.
- Secure escutcheon with (2) pan head screws.
- Install batteries and battery cover with pan head screw.



INSTALLATION INSTRUCTIONS

MOTORIZED DEADBOLT



Caution Statement:

FCC ID: 2BBNS-KLCP1

Contains FCC ID: 2AV6C-CRCM1101B1

NOTE: This equipment has been tested and found to comply with the limits for a Class A digital device, pursuant to part 15 of the FCC Rules. These limits are designed to provide reasonable protection against harmful interference when the equipment is operated in a commercial environment. This equipment generates, uses, and can radiate radio frequency energy and, if not installed and used in accordance with the instruction manual, may cause harmful interference to radio communications. Operation of this equipment in a residential area is likely to cause harmful interference in which case the user will be required to correct the interference at his own expense.

NOTE: This equipment has been tested and found to comply with the limits for a Class B digital device, pursuant to part 15 of the FCC Rules. These limits are designed to provide reasonable protection against harmful interference in a residential installation. This equipment generates, uses and can radiate radio frequency energy and, if not installed and used in accordance with the instructions, may cause harmful interference to radio communications. However, there is no guarantee that interference will not occur in a particular installation. If this equipment does cause harmful interference to radio or television reception, which can be determined by turning the equipment off and on, the user is encouraged to try to correct the interference by one or more of the following measures:

- Reorient or relocate the receiving antenna.
- Increase the separation between the equipment and receiver.
- Connect the equipment into an outlet on a circuit different from that to which the receiver is connected.
- Consult the dealer or an experienced radio/TV technician for help.

This device complies with Part 15 of the FCC Rules. Operation is subject to the following two conditions: (1) This device may not cause harmful interference, and (2) This device must accept any interference received, including, an interference that may cause undesired operation. Any changes or modifications not expressly approved by the party responsible for compliance could void the user's authority to operate this equipment. This equipment should be installed and operated with a minimum distance of 15 cm between the radiator and your body.