

Shenzhen jinnaibo Electronic Co., Ltd.

Address: Floor 3, building L, Shasi hi tech park, Shasi Community, Shajing street,  
Baoan,Shenzhen,China

Tel.:(+86)15914050881

Email: 5467290@qq.com


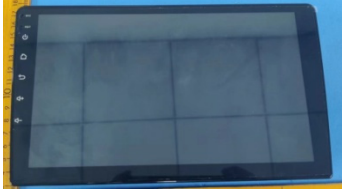

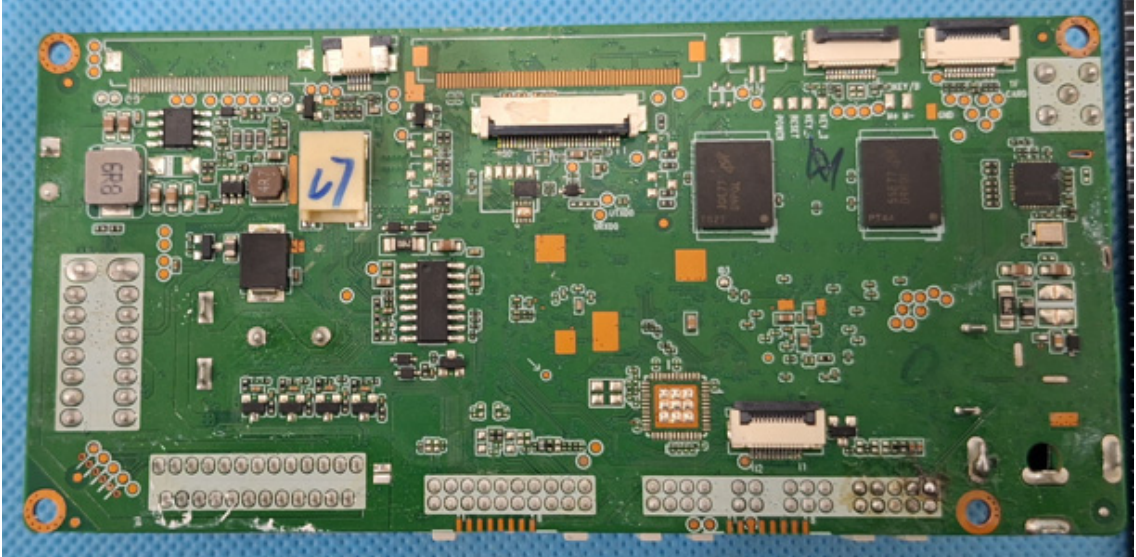
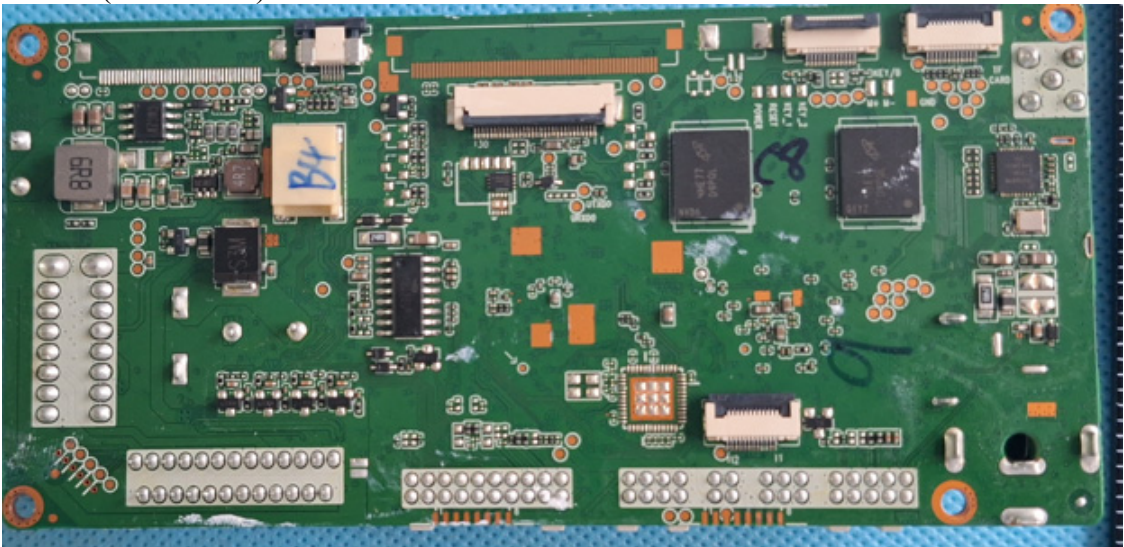
## **Product Similarity Declaration**

2024-02-05

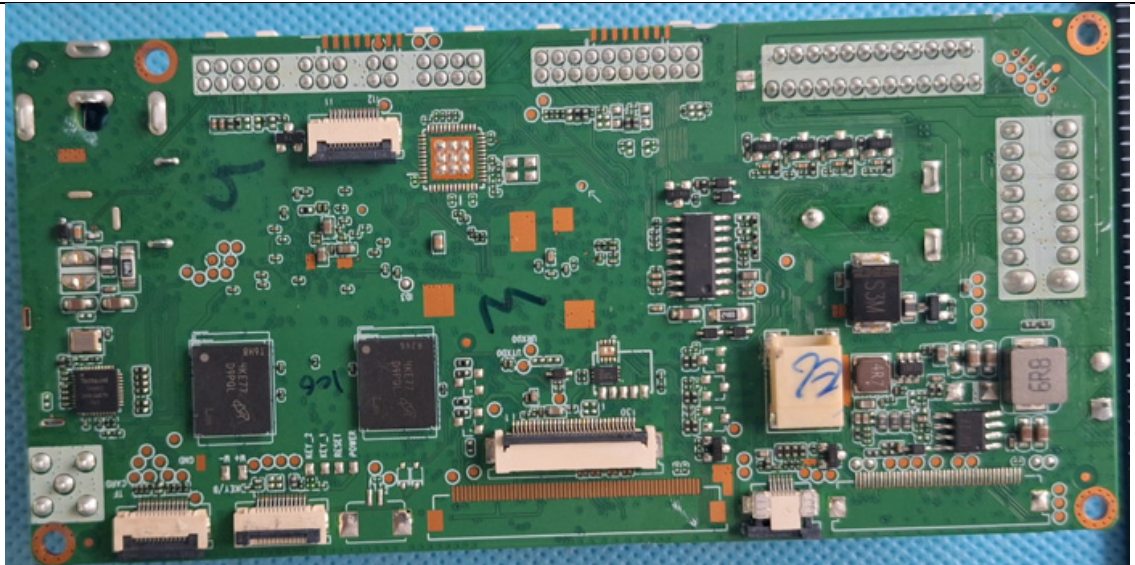
Dear Sir/Madam,

We Shenzhen jinnaibo Electronic Co., Ltd. , hereby declare that we have a product named as Car Navigation System (model: XT892C) was full tested by World Alliance Testing & Certification (Shenzhen) Co., Ltd.. For our marketing purpose,we would like to show a series of models on the report and certificate. The models listed are as follows:XT892C, XT812C, XTGMC72C, XT891, XT811, XT892, XT812, XT891C, XT811C, XT892SC, XT812SC, XT592XT512, XT594, XT514, XT596, XT516,XTMGN272C,XTLY72C,XTF15072C,XTA372C, XTDA72C, XTTR72C, XTVW72C, XTJE72C,XTPG72C, XTPB72C, XTPS72C, XTB20072C, XTW21172C, XTW20372C, XTW20972C, XTE4672C,XTE9072C, XTE3972C,XTFC72C, XTFD72C, XTFYT50072C, XTPANDA72C,XTPUNTO72C, XTVW92C, XTB20082C,XTVW82C, MS92NV, MS12NV, MS94NV, MS14NV, MS96NV, MS16NV, MS94, MS14, MS98, MS18, MS9256, MS1256, BW3E9014, X5CCC14, B2B3NBT4, E60CIC84, E60CCC84,HPA584.GP, HPQ514.GP, GBZA14-15, GQ514L-917, GA4A514H-916, DW8114, DW8134, SPAccrodDW894,DW4Runner4.G, DW4Runner4.S, M3VWMT, M3B, GT694, GT614, GT698,GT618, GT698S, GT618S,DW8RUNNER12, DW9RUNNER14, DW8RAM14, DW9RAM14, DW9F15024-314, DW9F15024-521.The differences between all series models and the main test model (XT892C) with the same specific description as below:

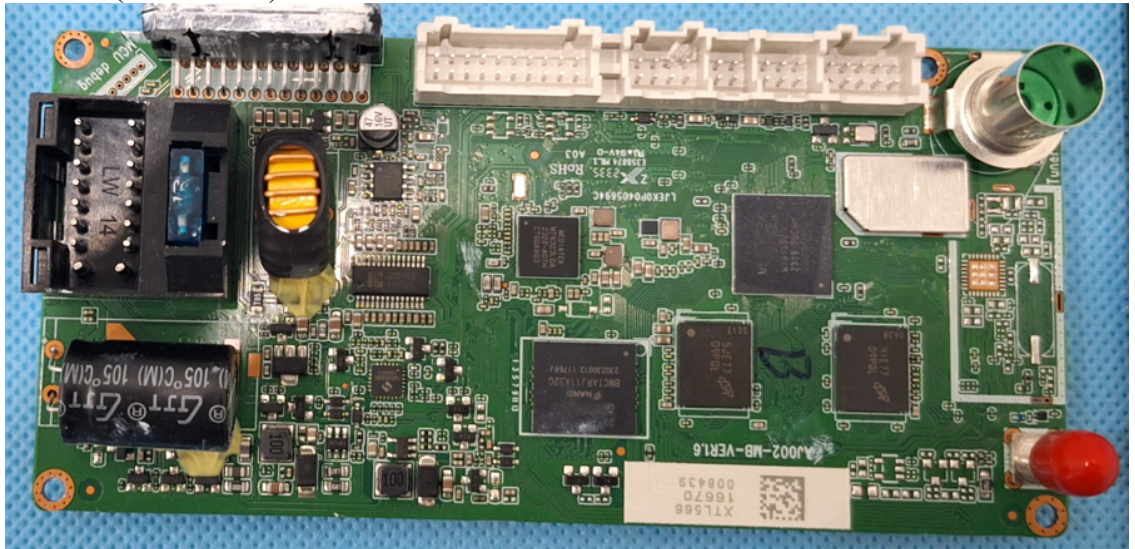
The difference test models are as follows:

Model Number	XT892C	XT812C	XTGMC72C
Appearance (Screen size)			 One extra USB-A port One extra USB C port
Similarities(Internal equivalent)	All three models have the same main board which contains the identical RF boards. The main board are shown as below XT892C(main board) front:  XT812C(main board) front:  XTGMC72C(main board) front:		

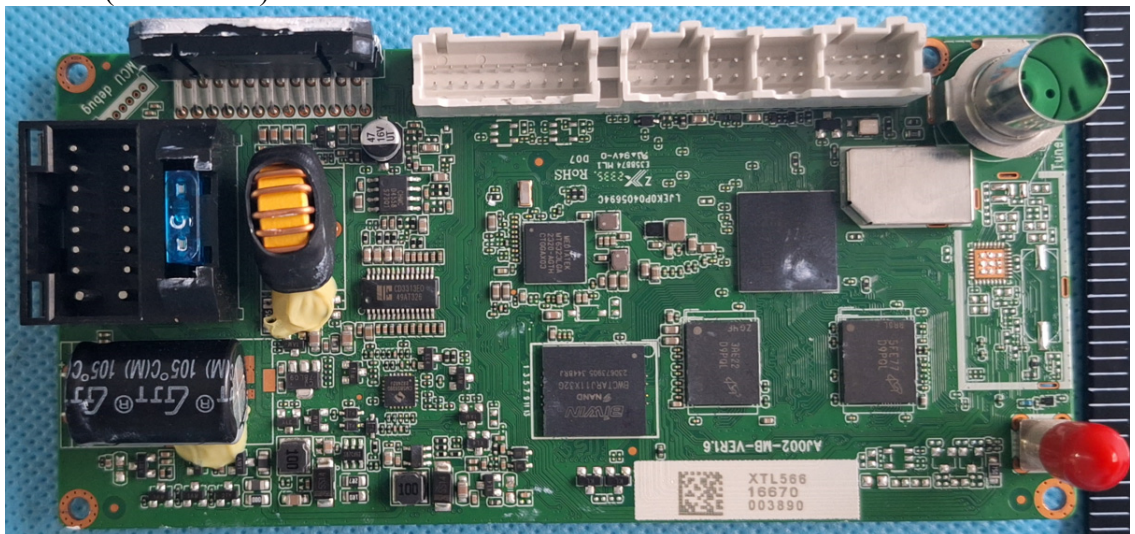




XT892C(main board) back:

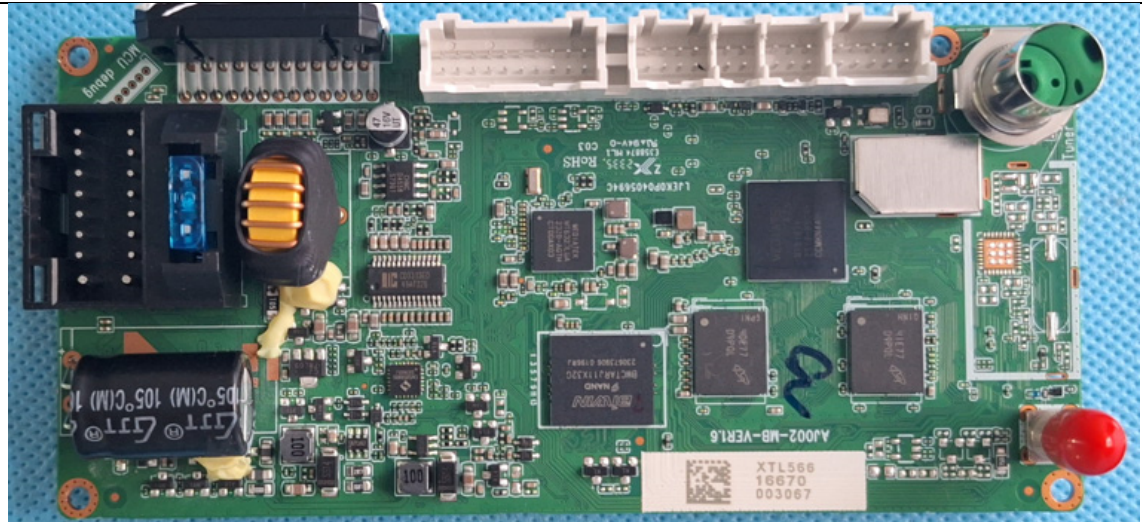


XT812C(main board) back:

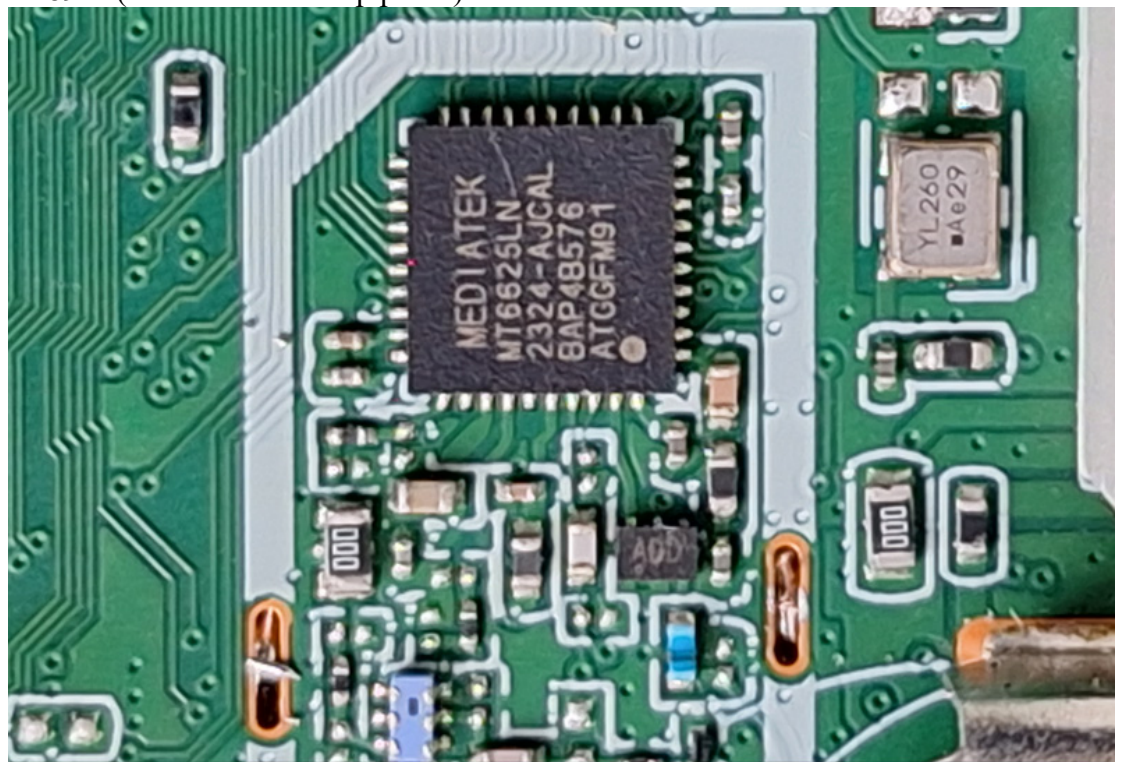


XTGMC72C(main board) back:



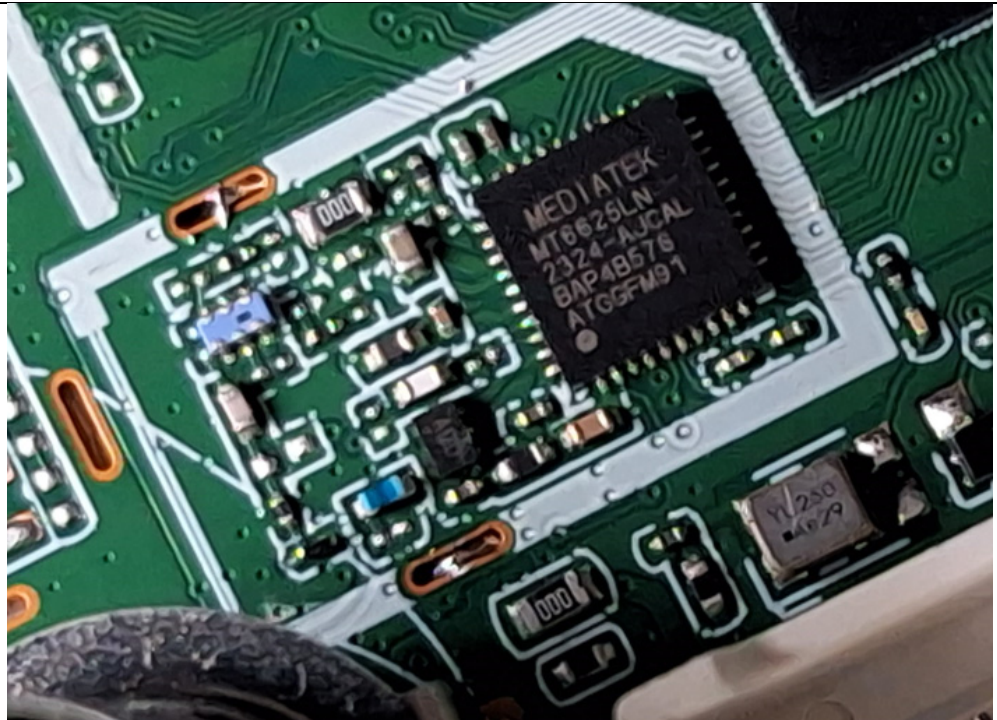


XT892C(RF circuit close-up photo):



XT812C(RF circuit close-up photo):





XTGMC72C(RF circuit close-up photo):

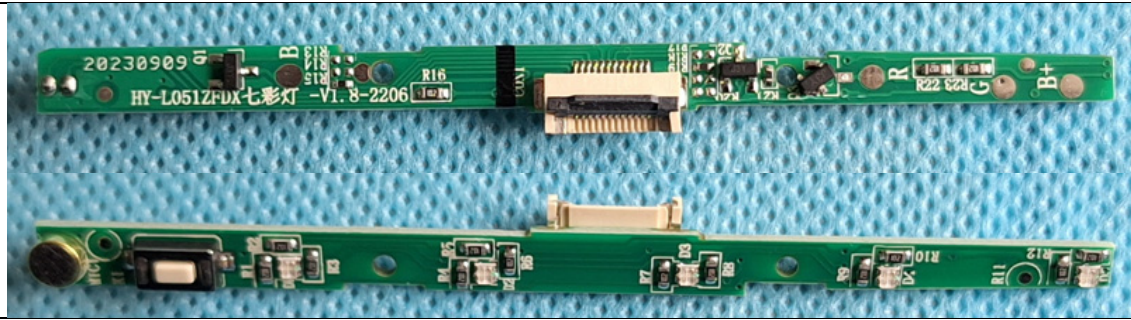


Different parts inside

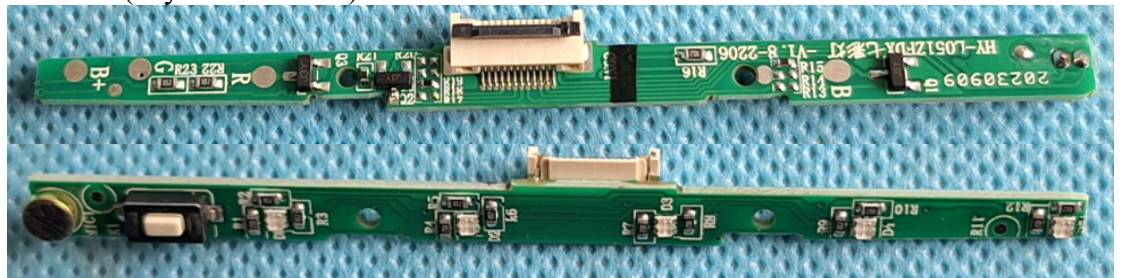
The model XTGMC72C have different keystroke circuit and extra port, the other two models have the same keystroke circuit. All three models have different appearance and different size of display screen.

XT892C(keystroke circuit) front and back:

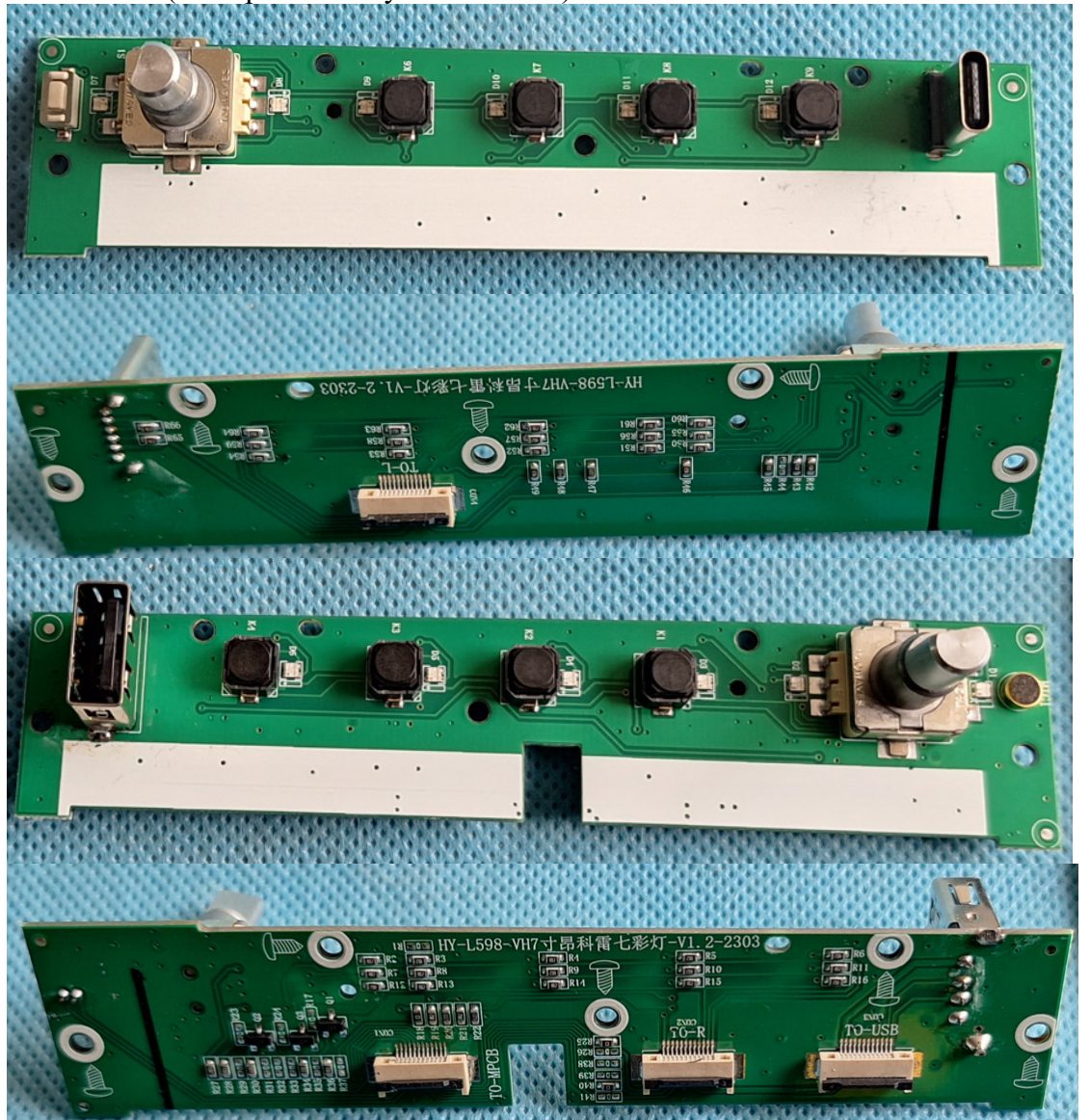




XT812C (keystroke circuit) front and back:



XTGMC72C(extra port and keystroke circuit) front and back:





different appearance and different size of display screen:



The difference of other models are as follows:

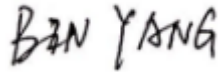
Model Number	XT891,XT811, XT892, XT812, XT891C,XT811C, XT892SC, XT812SC,XT592XT512, XT594, XT514, XT596, XT516, XTMGN272C,XTLY72C,XTF15072C,XTA372C,XTDA72C, XTTR72C, XTVW72C, XTJE72C,XTPG72C, XTPB72C, XTPS72C,XTB20072C, XTW21172C, XTW20372C, XTW20972C, XTE4672C,XTE9072C, XTE3972C, XTFC72C, XTFD72C, XTFYT50072C, XTPANDA72C, XTPUNTO72C, XTVW92C, XTB20082C, XTVW82C, MS92NV, MS12NV, MS94NV,MS14NV, MS96NV,MS16NV, MS94, MS14, MS98, MS18, MS9256, MS1256,BW3E9014, X5CCC14, B2B3NBT4, E60CIC84, E60CCC84,HPA584.GP, HPQ514.GP, GBZA14-15, GQ514L-917, GA4A514H-916, DW8114, DW8134, SPAccrodDW894,DW4Runner4.G, DW4Runner4.S, M3VWMT,M3B, GT694,GT614, GT698,GT618, GT698S, GT618S,DW8RUNNER12, DW9RUNNER14, DW8RAM14, DW9RAM14, DW9F15024-314, DW9F15024-521
Appearance (Screen size)	Same as the main test model( XT892C)
Same Part	Same as the main test model( XT892C)
Different part	Only have different model names with the main test model ( XT892C) , the rest is the same as the main test model( XT892C)

We confirm that all information above is true, and we'll be responsible for all the consequences. Please contact me if you have any question.

Sincerely Yours,

Signature:

BIN YANG  
Manager

A handwritten signature in black ink that reads "BIN YANG". The letters are slightly slanted and connected, with a casual, cursive-like style.