



Shenzhen XINHENG YANG Technology Co., Ltd

SPECIFICATION

Customer Name: _____

Product Model: _____ WPE 0701

Customer P/N : _____

XINHENG YANG P/N: _____

SPECIFICATIONS: _____ 2400-2500MHz

Production date: _____ 2023.04.26

Sample Version: _____ V1.0

XINHENG YANG		
FICTION	DQE	R&D
Customer		
PUR	QC	R&D



Index

Cover	1
Index	2
Change history	3
The basic parameters	4
TestEquipment & Conditions	5
Test Report	6—8
RoHS/Bill of materials	9



Change history

Number	Effective date	Change record
V1.0	2023.04.26	Initial release



The basic parameters

A. Electrical Characteristics	
Frequency	2400MHZ~2500MHZ --
VSWR	< 2
Avg Efficiency	>31%
Impedance	50 ± 15 Ohm
Polarization	Linear
Peak Gain	2.4G:1.10dBi
B. Material & Mechanical Characteristics	
Material of Radiator	onboard black
Cable Type	/
Connector Type	/
Dimension	/
C. Environmental	
Operation Temperature	- 20 °C ~ + 60 °C
Storage Temperature	- 30 °C ~ + 70 °C

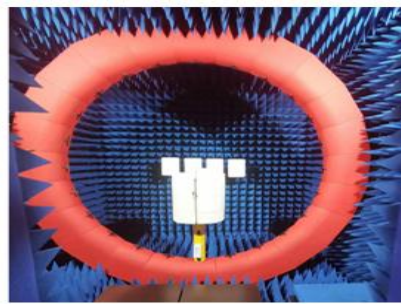
Introduction:

Microwave darkroom and no reflection chamber, absorbing short wave darkroom dark room. Microwave darkroom by electromagnetic shielding room, filtering and isolation, grounding device, the ventilation duct, indoor distribution system, monitoring system, ceiling wave material part. It is based on the wave absorbing material as the lining of the shield room, it can absorb the most of the electromagnetic energy into the six wall is a better simulation of the free space conditions.

The main working principle of microwave anechoic chamber is according to the electromagnetic wave in the medium from the low magnetic guide magnetic direction of propagation rules, absorbing materials to guide the electromagnetic wave using high permeability, through resonance, a substantial absorption of electromagnetic wave radiation energy, by coupling the electromagnetic energy into heat energy.

main performance :

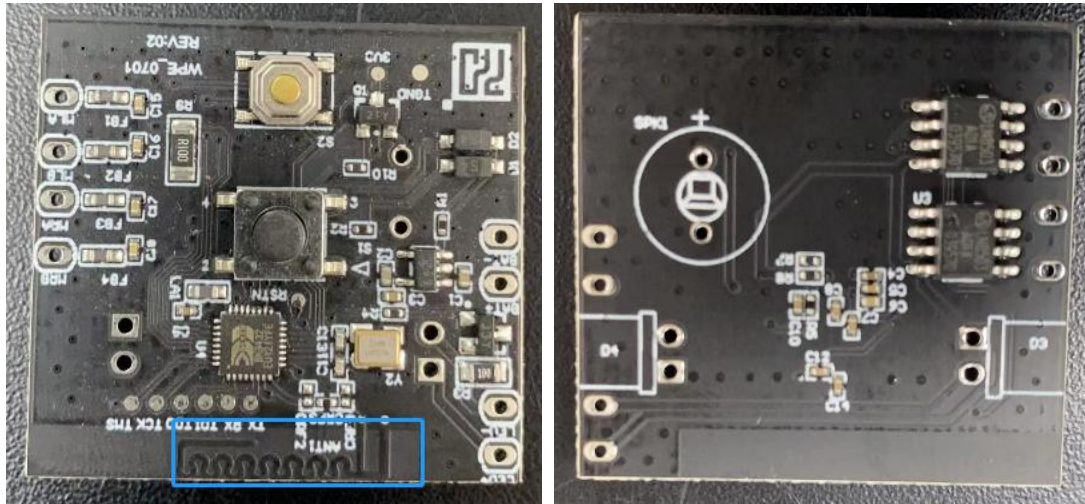
Frequency range:400MHz ~ 6GHz ceiling reflected wave loss materials: 400MHz ~ 6GHz is equal to or more than 15dB (microwave absorbing material by composite wave absorbing materials, namely tapered containing carbon sponge suction wave material paste in ferrite)



Test Report

Those specifications were specially defined for WPE_0701 model.

1. Antenna position

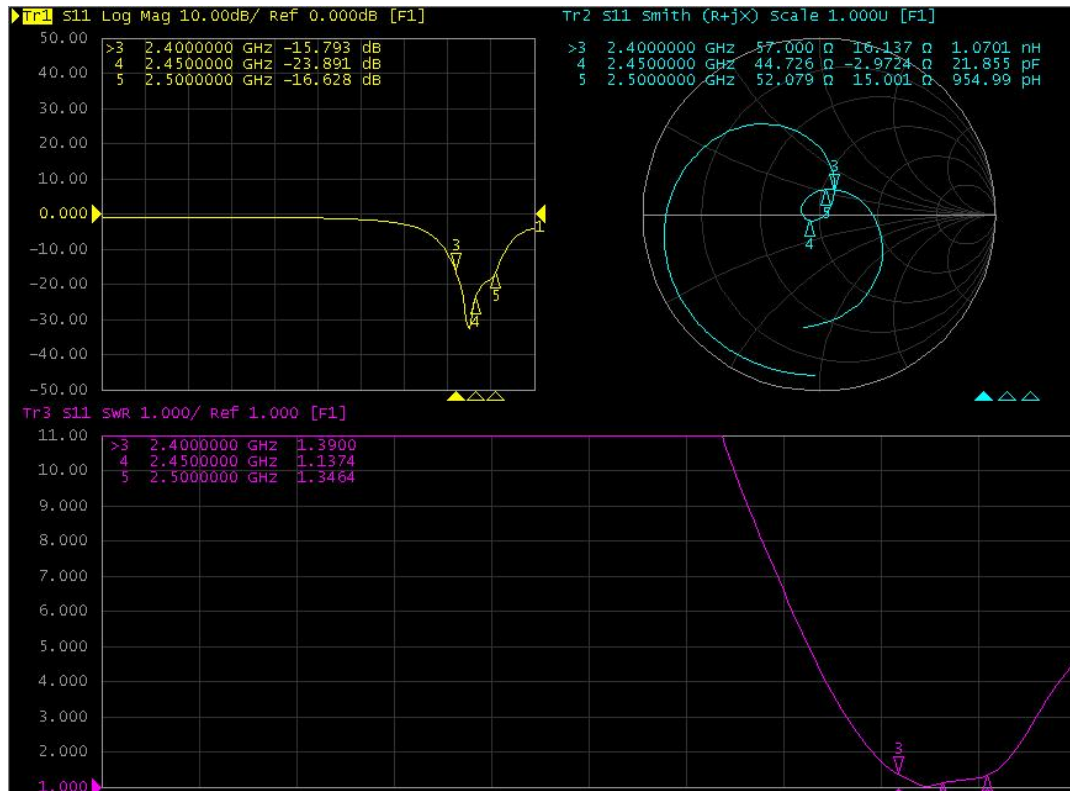


VSWR

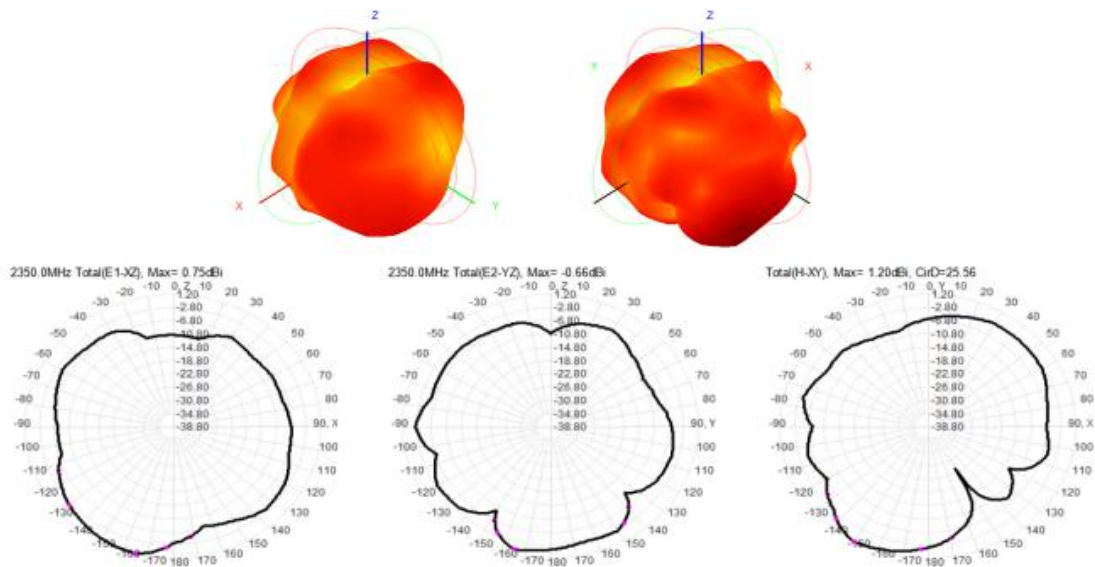
2. Measuring Method

1. A 50Ω coaxial cable is connected to the antenna. Then this cable is connected to a network analyzer to measure the VSWR
2. Keeping this jig away from metal at least 20cm

3.Measurement frequency points and VSWR value

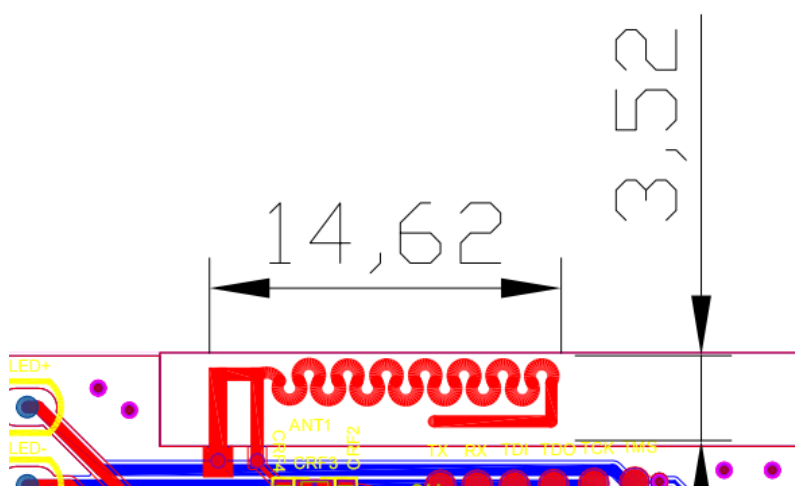


4. Gain table of Antenna:



Freq (MHz)	2400MHZ-2500MHZ	
	Effi(%)	Gain (dBi)
2400	36.54	0.75
2410	36.72	0.56
2420	36.53	0.63
2430	37.45	0.72
2440	37.27	0.89
2450	37.11	1.10
2460	36.40	0.69
2470	35.12	0.53
2480	34.27	0.41
2490	33.55	0.26
2500	32.07	-0.07

Unit : mm





RoHS/Bill of materials

1.RoHS

Antenna_____meets RoHS requirements See electronic file for details.

*****END*****