

Scan this QR code to download the APP and control the lights



Welcome to our App! Here are some guidelines to help you better use the App, including features:

First of all, the use of the functions of the App needs to authorize the authority of the mobile phone system, and requires the consent to open to use the functions of the App normally.

## 1. My Device

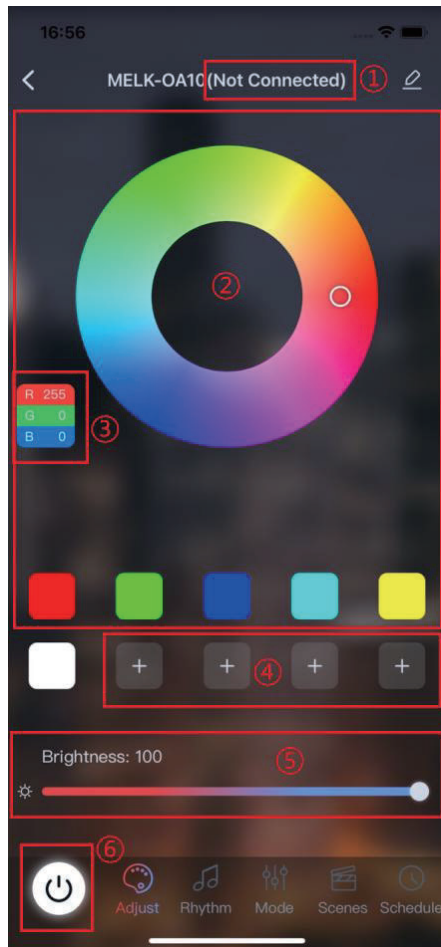


- ① List of devices, showing the searched devices, which are highlighted when connected.
- ② Connection status, click to connect / disconnect the device.
- ③ Light switch button, click the light on / off.
- ④ Set the button, click to jump to the setting page
- ⑤ Switch over the device list display mode
- ⑥ Add the device / group / virtual device entry

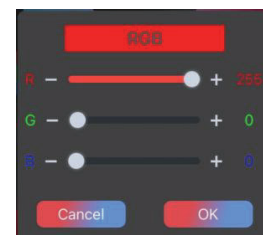
## 2. Device details

### 2.1 Adjust

You can switch the color of the device by sliding the color disk or clicking on the color block.



- ① Device connection state, including unconnected / empty (representing connected)
- ② Color tray, used to change the device color
- ③ RGB color value, click can set the RGB color value to more accurately select the color
- ④ Customize the color to save your favorite color. After selection, slide the color plate above. Long press can be deleted.
- ⑤ Brightness adjustment, sliding can set the brightness of the device
- ⑥ Switch, used for turning the lights on / off



③

## 2.2 Rhythm

Rhythm is generally divided into three kinds (according to the specific situation of the Device), outer wheat, mobile phone mic and music rhythm.among

Outer mic: it relies on the built-in microphone of the device to rhythm, and the device will automatically make the corresponding light rhythm according to the change of external sound. After switching to this mode, the APP can also be used normally without a connection.(The specific function is subject to the device, and some devices do not support this function)

Mobile phone mic: it relies on the microphone of the mobile phone to rhythm. The APP will calculate the corresponding instructions according to the transformation of external sounds, and then send them to the device, and the device will make the corresponding lighting rhythm. After switching to this mode, you need to connect to the APP and stay on this page to use it normally.

Music: it depends on the rhythm of mobile phone music. The APP will calculate the corresponding instructions according to the rhythm of the music, and then send them to the device end, and then the device will make the corresponding lighting rhythm. After switching to

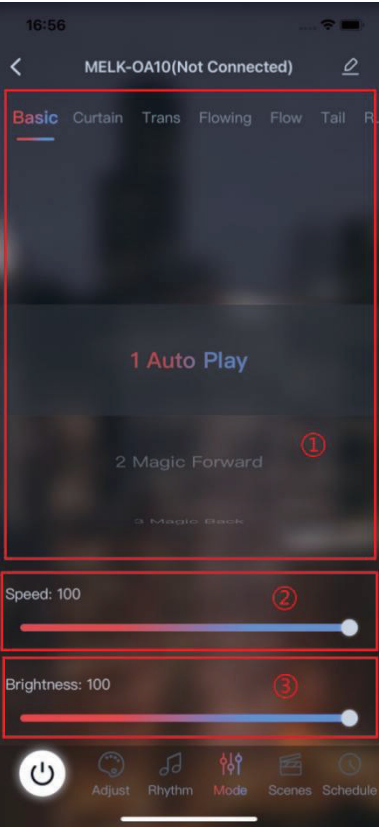
this mode, you need to connect to the APP and stay on this page to use it normally.



- ① Rhythm options, click / swipe to able.
- ② Sensitivity adjustment, refers to the sensitivity to the external sound recognition.
- ③ Rhythm style, click to switch

### 2.3 Mode

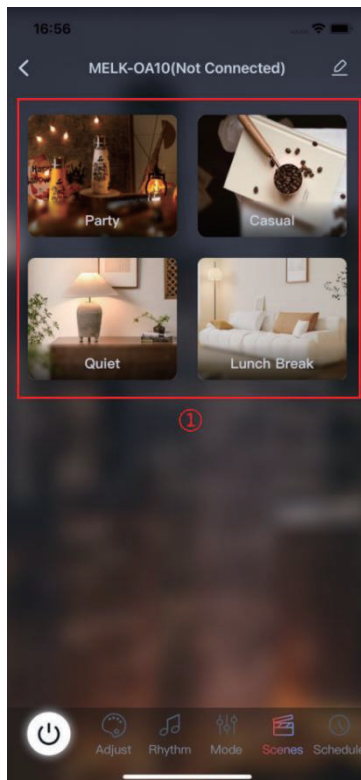
A designed combination of color, speed and brightness.



- ① Mode list, slide to switch
- ② Speed adjustment, sliding can set the transformation speed of the mode
- ③ Brightness adjustment, sliding to set the brightness of the light

## 2.4 Scenes

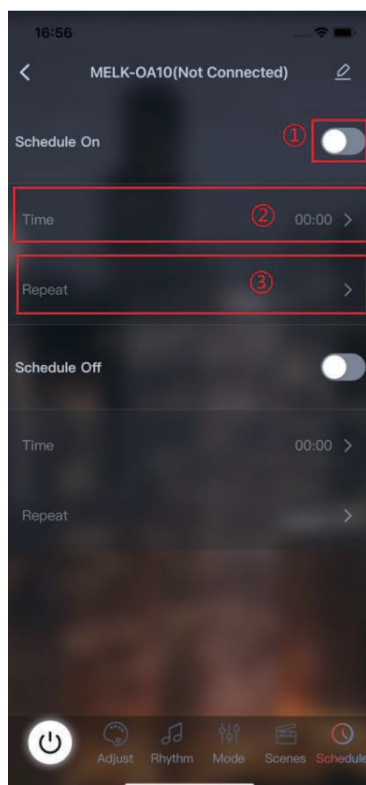
A combination of colors, speed and brightness designed according to different usage scenes



① List of Scenes, click to switch

## 2.5 Schedule

Support setting time on and time off. Note: The APP will not save the timing time. After connecting the device, it will automatically read from the device.

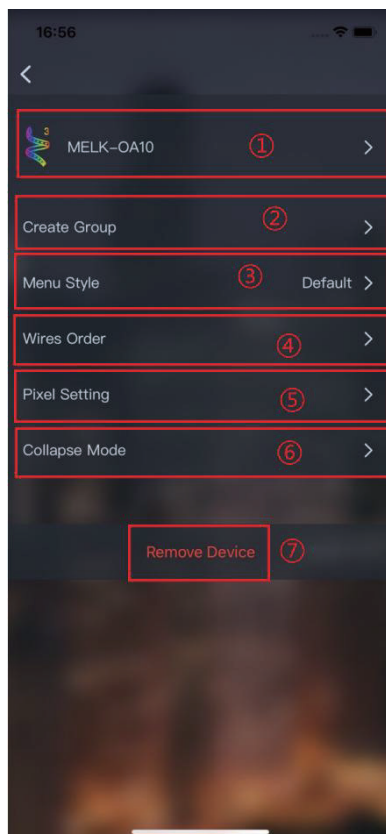


① switch

② time selection

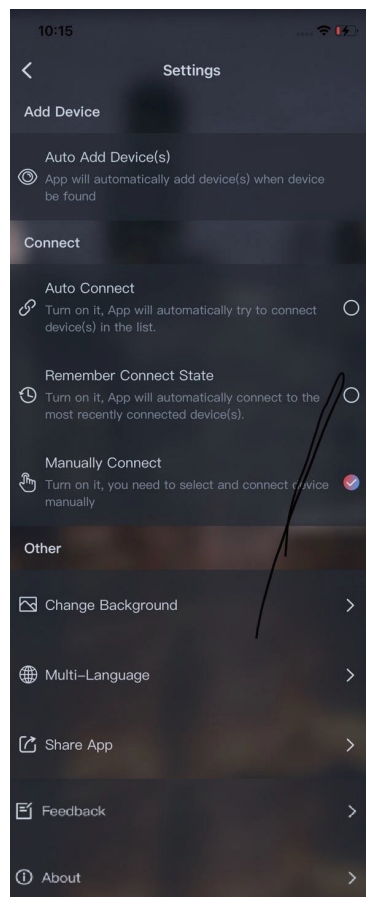
③ Repeat, can set Monday to Sunday any time, support multiple selection

## 2.6 Device editing



- ① Modify the device icon and name
- ② Create groups, a similar type of devices support creating groups, you can control multiple devices simultaneously
- ③ Menu style, you can modify the page style
- ④ Line order can be corrected when the device color is not consistent with the setting color.
- ⑤ Point setting to set the number of points
- ⑥ Fold mode, for the dynamic mode to do the folding display effect
- ⑦ Remove the device and remove the device from my device list

## 3. Set



- ① Automatically add devices. After checking, the APP will automatically search for nearby devices and add to my device list
- ② linkage
  - Automatic connection: After checking, it will automatically connect to my device list
  - Memory connection: When checked, the most recently connected device is automatically connected
  - Manual connection: after checking, you need to manually click on the corresponding device to connect
- ③ other
  - Change the background: you can customize the APP background map
  - Multi-lingual: you can switch to the APP language and follow the mobile phone system by default
  - Share the APP: Download the QR code for the same series of APP
  - Problem feedback: Problems can be feedback by email
  - About: The APP version is introduced

**FCC Warning:**

This equipment has been tested and found to comply with the limits for a Class B digital device, pursuant to part 15 of the FCC Rules. These limits are designed to provide reasonable protection against harmful interference in a residential installation. This equipment generates, uses and can radiate radio frequency energy and, if not installed and used in accordance with the instructions, may cause harmful interference to radio communications. However, there is no guarantee that interference will not occur in a particular installation. If this equipment does cause harmful interference to radio or television reception, which can be determined by turning the equipment off and on, the user is encouraged to try to correct the interference by one or more of the following measures:

- Reorient or relocate the receiving antenna.
- Increase the separation between the equipment and receiver.
- Connect the equipment into an outlet on a circuit different from that to which the receiver is connected.
- Consult the dealer or an experienced radio/TV technician for help.

**Caution:** Any changes or modifications to this device not explicitly approved by manufacturer could void your authority to operate this equipment.

This device complies with part 15 of the FCC Rules. Operation is subject to the following two conditions:

(1) This device may not cause harmful interference, and (2) this device must accept any interference received, including interference that may cause undesired operation.

This equipment complies with FCC radiation exposure limits set forth for an uncontrolled environment. This equipment should be installed and operated with minimum distance 0cm between the radiator and your body.