

Model: T6

User Manual

Android Smart Mobile POS.

T6

Made in China



Contents Checklist

CONTENTS	
Device	x1
Manual	x1
USB Cable	x1
Adapter	x1
Paper Roller	x1
BASE(optional)	x1

After unpacking your terminal, please verify all items are included in the package. If any components are missing, please contact customer service immediately.

Note: Please use thermal printing paper with a thickness of 0.05-0.085mm

Usage and Safety Guidelines

Water Protection Guidelines

1. Always power off the device before cleaning.
2. Use only non-corrosive cleaning agents.
3. Never submerge the device in water or any liquid.
4. Take care to prevent water or cleaning solution from entering the card reader or keypad.

Lithium Battery Safety Guidelines

1. Handle batteries with care - improper handling may cause fire or explosion.
2. Only use the provided adapter to charge the battery.
3. Keep the battery away from water, liquids, fire, and high temperatures.
4. Do not puncture, crush, or strike the battery with sharp or hard objects.

4. Do not puncture, crush, or strike the battery with sharp or hard objects.
5. To maintain battery capacity, charge the device regularly (every 3-6 months is recommended).
6. Replace the battery immediately if it:
 - Shows any deformation (such as bulging)
 - Has physical damage
 - Leaks any substance
 - Produces unusual odors
7. Replace the battery every 2-3 years, even if it appears to be functioning normally.
8. Dispose of used batteries according to local environmental regulations.

Any Changes or modifications not expressly approved by the party responsible for compliance could void the user's authority to operate the equipment.

This device complies with part 15 of the FCC Rules. Operation is subject to the following two conditions: (1) This device may not cause harmful interference, and (2) this device must accept any interference received, including interference that may cause undesired operation.

Note: This equipment has been tested and found to comply with the limits for a Class B digital device, pursuant to part 15 of the FCC Rules. These limits are designed to provide reasonable protection against harmful interference in a residential installation. This equipment generates, uses and can radiate radio frequency energy and, if not installed and used in accordance with the instructions, may cause harmful interference to radio communications. However, there is no guarantee that interference will not occur in a particular installation. If this equipment does cause harmful interference to radio or television reception, which can be determined by turning the equipment off and on, the user is encouraged to try to correct the interference by one or more of the following measures:

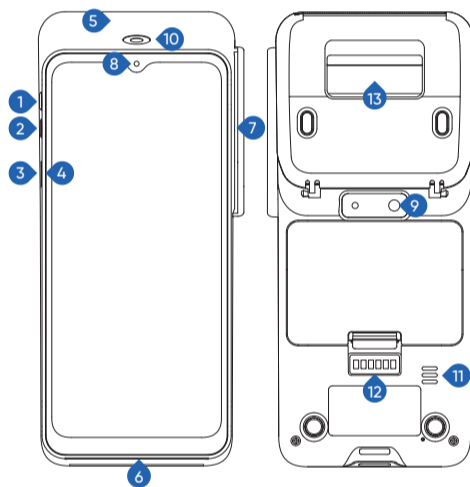
- Reorient or relocate the receiving antenna.
- Increase the separation between the equipment and receiver.
- Connect the equipment into an outlet on a circuit different from that to which the receiver is connected.
- Consult the dealer or an experienced radio/TV technician for help.

The device has been tested and comply with FCC SAR limits. For body mode, please keep the device minimum 10mm when normal use.

Specification

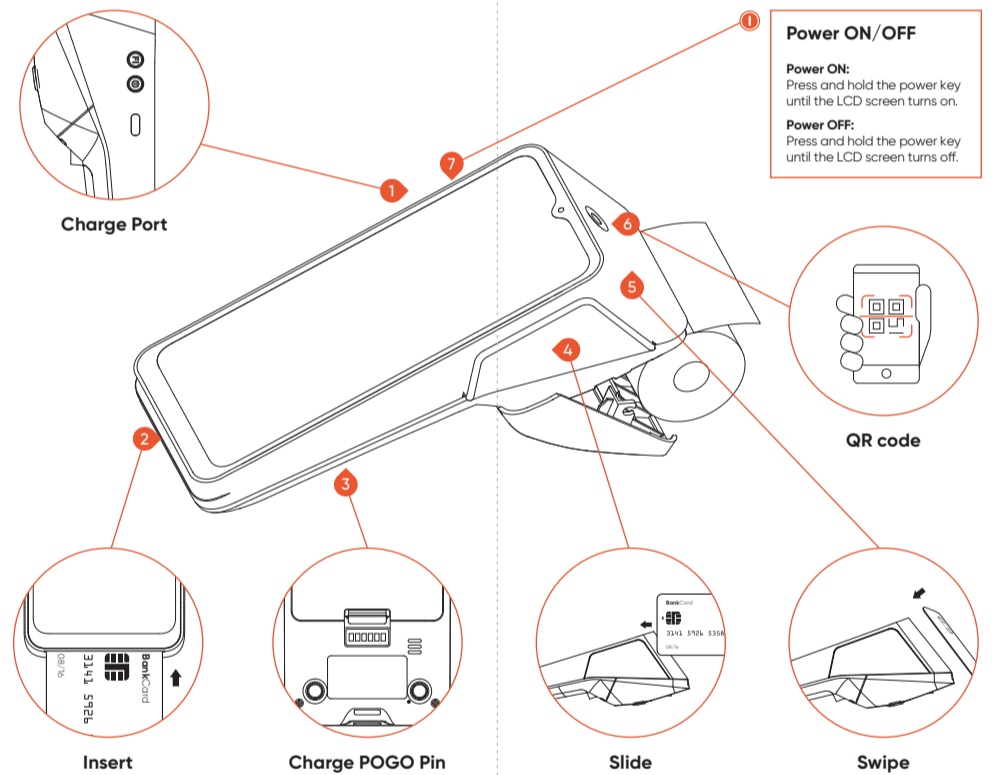
OS	Android 13
Processor	AP: 64bit Cortex A53 2.0 GHz SP: RISC Core (ARMv7 - M)
Memory	2GB RAM + 32GB Flash 3GB + 32GB / 4GB + 64GB (optional)
Display	6.5" HD 1600*720 IPS Capacitive Multi - Touch Screen
Printer	Print speed: 95mm/s Paper Roll: 58*40mm
Camera	5 MP AF Rear - Facing (8MP AF optional) 2 MP FF Top - Facing
Physical Key	Power x 1 Function x 1
Card Readers	Chip & PIN NFC Contactless Magnetic Stripe
Mobile Network	4G: FDD-LTE 3G: WCDMA 2G: GPRS / GSM
Wireless	WiFi 2.4GHz / 5GHz BT&BLE IM
Card Slots	TF Card x 1 SIM x 2 + PSAM x 1 or SIM x 1 + PSAM x 2 (esim x 1 optional)
Audio	Speaker x 1
Indicator LEDs	Charging LED x 1 (Red + Green)
Positioning	GPS L1 C/A, BDS B1I, Galileo E1 SBAS L1: 1559-1610MHz(RX)
Port	USB Type-C x 1
Sensor	Light-sensor G-sensor
Power	Battery: 7.2V / 2600mAh Adapter: 5V / 2A
Physical	183.7 x 79.9 x 31.9mm 360g

Product



- | | |
|-------------------|----------------|
| 1 Function key | 8 Light-sensor |
| 2 Power key | 9 Rear Camera |
| 3 Type-C | 10 Top Camera |
| 4 Indicator LED | 11 Speaker |
| 5 NFC reader area | 12 POGO Pin |
| 6 ICCR card slot | 13 Printer |
| 7 MSR card slot | |

Usage



Any Changes or modifications not expressly approved by the party responsible for compliance could void the user's authority to operate the equipment.

This device complies with part 15 of the FCC Rules. Operation is subject to the following two conditions: (1) This device may not cause harmful interference, and (2) this device must accept any interference received, including interference that may cause undesired operation.

Note: This equipment has been tested and found to comply with the limits for a Class B digital device, pursuant to part 15 of the FCC Rules. These limits are designed to provide reasonable protection against harmful interference in a residential installation. This equipment generates, uses and can radiate radio frequency energy and, if not installed and used in accordance with the instructions, may cause harmful interference to radio communications. However, there is no guarantee that interference will not occur in a particular installation. If this equipment does cause harmful interference to radio or television reception, which can be determined by turning the equipment off and on, the user is encouraged to try to correct the interference by one or more of the following measures:

- Reorient or relocate the receiving antenna.
- Increase the separation between the equipment and receiver.
- Connect the equipment into an outlet on a circuit different from that to which the receiver is connected.
- Consult the dealer or an experienced radio/TV technician for help.

The device has been tested and comply with FCC SAR limits.

For body mode, please keep the device minimum 10mm when normal use.