

正面

140*210 MM

KLT-LITE

MAGNETIC WIRELESS TRAILER LIGHT KIT

100%

INSTRUCTION

10 HOURS

Running Time

30M RATIO

Communication Range


IP67

Waterproof


10-30V

Wide Working Voltage


» Package Content:




2x Wireless Trailer Lights (Left+Right)



1x USB Cigarette Plug Adapter



1x 7 to 4-way plug with signal transmitter



1x Dual USB Charging Cable

» Function Instruction:

3 Function Button

Signal transmitter

License plate light

Reset

1

2

3

Short press the button:
Start/end up to receive stop turn tail signals from the signal transmitter on the 7 to 4 way plug

Press and Hold for 3s:
License Plate light on/off

Long press and hold for 15s:
To reset matching between the signal transmitter and receiver when you get a replaced new light or a new 7 to 4-way plug.

Charging Port

You can charge lights with Dual USB Charging Cable

Running Tail Light

Brake light or Turn Signal light

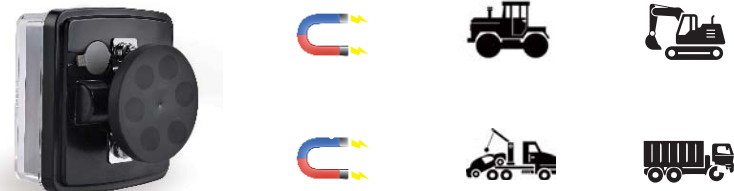
Ground

反面

140*210 MM

» Mounting:

Easy to Install, simply attach the magnet to the surface of the steel.




NOTE:


1.Before using, Please connect the included 7-to-4 plug with the 7-way or 4-way plug on your vehicle, and then short press to turn on the 7 to 4 way signal transmitter button of each light.
2.These light kits are suitable for vehicles with 4-wire tail light systems only (turn signals and brake light are on the same wire). It will not work for vehicles with 5 wire tail light system.
Please double-check your trailer wiring plug connector before installation.


» Testing:

Check if the lights work correctly before each use.




Running Tail Light






Brake Light



Strobe

Turn Signal Light



» Specification:

Input Voltage: DC5V	Input Current: 2A
Working Voltage: DC10-30V	Radio Communication Range: 30Meters
Battery Capacity: 2600MAH	Charging Time: 3Hours
Waterproof Rate: IP67	Operating Temperature: -25 C-65 C
100% Battery working time: 10 hours	

» Dimension:

Battery Life:

100%	50%	25%
10Hours	4Hours	2Hours

The data of endurance of battery is for your reference, it depends on the road condition and driving habit.

Important Note:

1.Fully charge the battery before use.

2.Check the battery life before use.

3.Check if the lights work correctly before each use.

4.Charge the battery every 6 months if not in use.

5.Check lights regularly when use for long hours.

6.Replaced lights need to be reset and paired.

FCC WARNING

This device complies with part 15 of the FCC Rules. Operation is subject to the following two conditions: (1) this device may not cause harmful interference, and (2) this device must accept any interference received, including interference that may cause undesired operation.

Any changes or modifications not expressly approved by the party responsible for compliance could void the user's authority to operate the equipment.

NOTE: This equipment has been tested and found to comply with the limits for a Class B digital device, pursuant to Part 15 of the FCC Rules. These limits are designed to provide reasonable protection against harmful interference in a residential installation. This equipment generates, uses and can radiate radio frequency energy and, if not installed and used in accordance with the instructions, may cause harmful interference to radio communications.

However, there is no guarantee that interference will not occur in a particular installation. If this equipment does cause harmful interference to radio or television reception, which can be determined by turning the equipment off and on, the user is encouraged to try to correct the interference by one or more of the following measures:

- Reorient or relocate the receiving antenna.
- Increase the separation between the equipment and receiver.
- Connect the equipment into an outlet on a circuit different from that to which the receiver is connected.
- Consult the dealer or an experienced radio/TV technician for help.

To maintain compliance with FCC's RF Exposure guidelines, This equipment should be installed and operated with minimum 20cm distance between the radiator and your body: Use only the supplied antenna.