

# Vacuum cleaner

Yongkang Jienuo Industry Trade Co., Ltd.

Xialixi Industrial Zone, Yongkang City, Zhejiang Province, P. R. China

## Attention:

Before cleaning or maintaining the appliance, the power plug must be removed from the socket-outlet

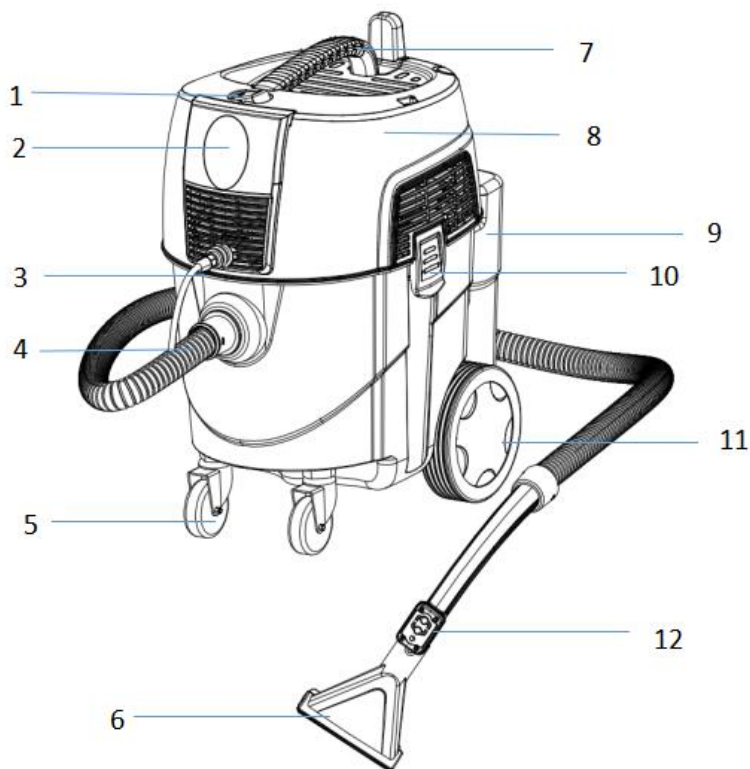
- Attention: Before assembly and starting operation, read the operating instructions carefully
- Check that the mains voltage corresponds to the details on the type plate
- Minimum fuse protection 13A
- Pull the mains plug out of the socket when: the unit is not in use, before opening the unit, before cleaning and maintenance
- Never clean with solvents
- Do not use the cable to pull the plug out of the socket
- When unit is ready for use, do not leave unattended
- Safeguard from children
- Care must be taken that the mains connection lead is not damaged by being driven over, crushed, stretched, etc
- The unit must not be operated if the mains connection lead is not in perfect condition
- If the supply cord is damaged, it must be replaced by the manufacturer or its service agent to a similarly qualified person in order to avoid a hazard.
- On no account vacuum: burning matches, glowing ashes and cigarette ends, inflammable, corrosive, fire hazard or explosive substances, vapours and liquids
- This unit is not suitable for vacuuming dust which is damaging to health
- Store the unit in a dry place
- Do not operate a defection unit
- Servicing only by an authorized after-sales service point
- Use only for operations for which the unit is intended
- Take great care when cleaning stairs
- Use only manufacturer's attachments and spare parts
- This appliance is not intended for use by persons (including children) with reduced physical, sensory or mental capabilities, or lack of experience and knowledge, unless they have been given supervision or instruction concerning use of the appliance by a person responsible for their safety.
- Children should be supervised to ensure that they do not play with the appliance.
- **IPX4 is only granted by connect an IPX4 plug to socket-out of the appliance or the cover of the socket-out is closed.**

## Technical data:

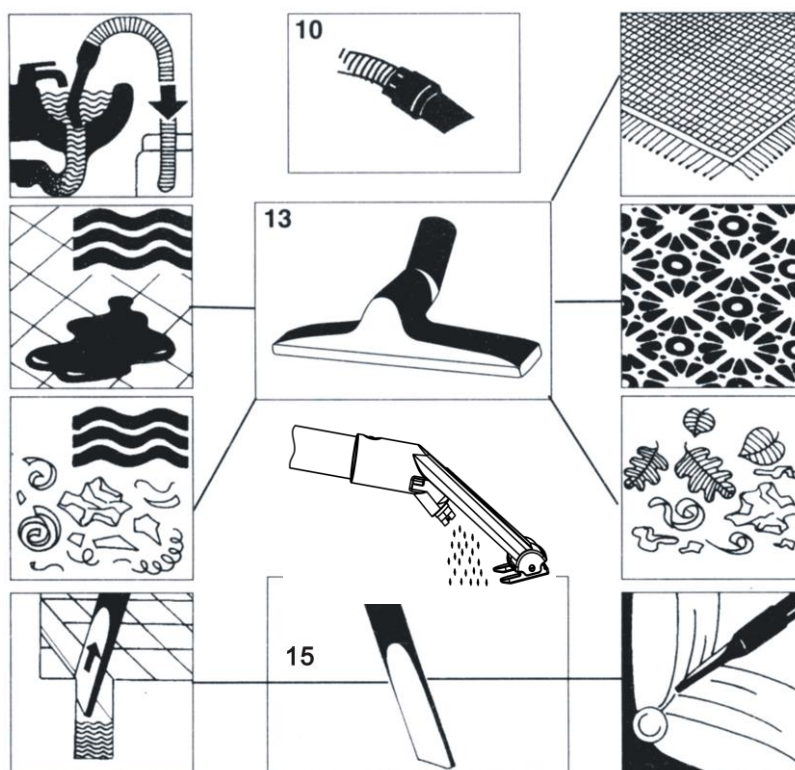
JN208-F, 208-F, SUCKR PRO      AC120V    60Hz    10A

## Items supplied:

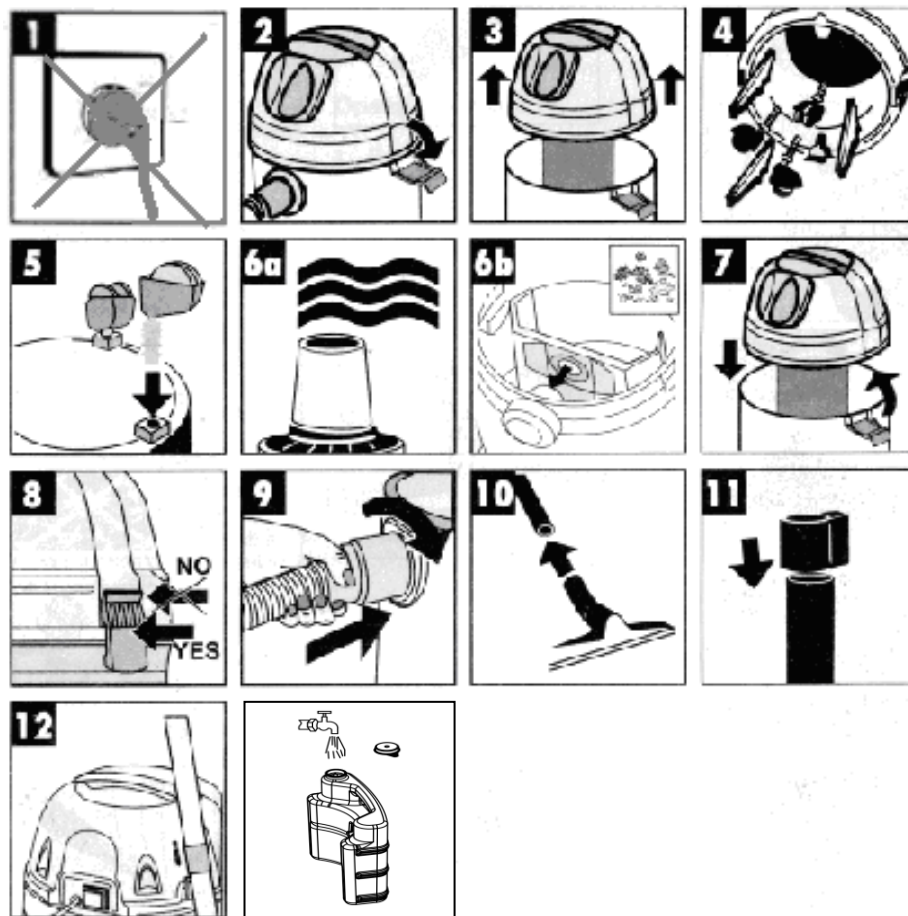
- 1、 Switch
- 2、 Front Panel
- 3、 waterpipe
- 4、 flexible pipe
- 5、 front wheel
- 6、 Suction brush
- 7、 handle
- 8、 Head cover
- 9、 Water tank
- 10、 Buckle latch
- 11、 Rear-Wheel
- 12、 Remote control



## Overview of nozzles



## Assembly



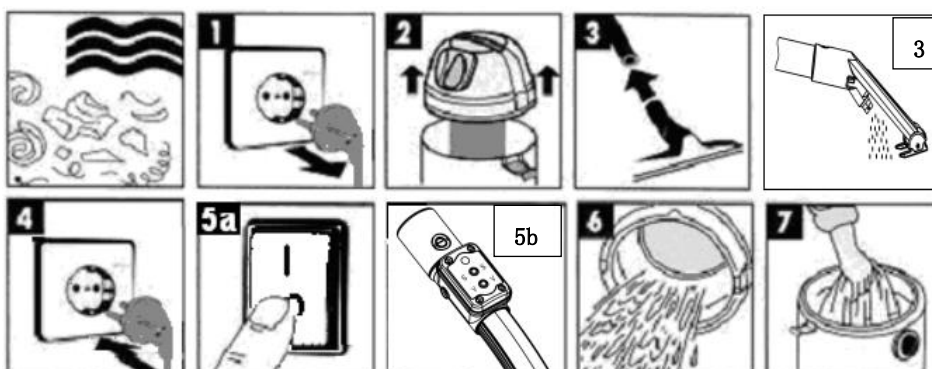
### Please note:

Figure 6a: Use the supplied foamed plastic filter for wet vacuum-cleaning

Figure 6b: Use the supplied dust bag for dry vacuum-cleaning

Figure 13: Fill the bucket with water and cover it in time

## Wet vacuum - cleaning



Unplug before change filter (Figure 1)

Pull the supplied foamed plastic filter over the filter basket (Figure 2) for wet vacuum-cleaning.

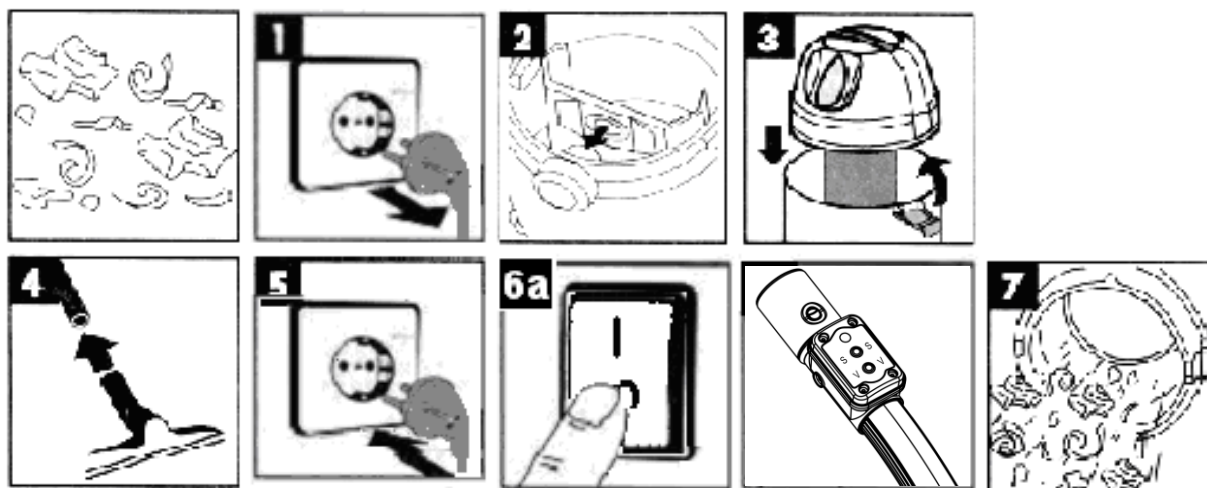
Insert the plug and turn on the switch, then press the remote control, and the device works (Figure 4 & 5a or 5b)

**For JN208-F, 208-F, SUCKR PRO AC120V 60Hz 10A :** When the switch is pressed to the "I" position, the vacuum cleaner is powered up but not working; press the remote "S" button to start the vacuum motor, press the remote "V" to start the pump motor, and then press the button, and the motor stops. When the switch "o" gear is pressed, press the button motor stops, the machine is cut off and the equipment stops working.

Observe the amount of water in the bucket.

The dust bag included upon delivery is not suitable for wet vacuum-cleaning!

## Dry vacuum-cleaning



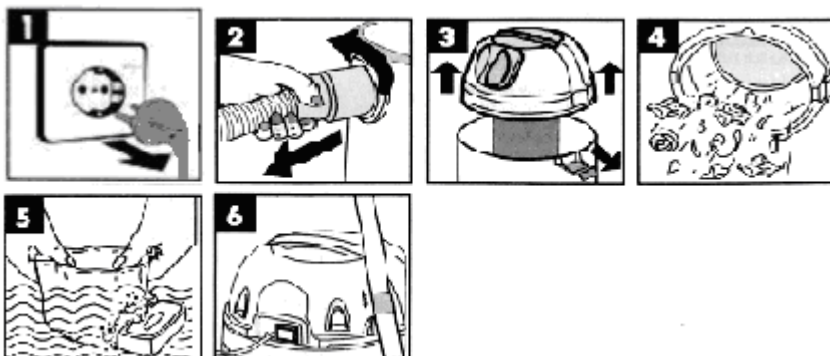
Unplug before change filter (Figure 1), then take out the bag and empty the dust or replace the bag. Slip the dust bag onto the socket (figure 2) for dry vacuum-cleaning.

Insert the plug and turn on the switch, then press the remote control, and the device works (Figure 5 & 6a or 6b)

**For JN208-F, 208-F, SUCKR PRO AC120V 60Hz 10A :** When the switch is pressed to the "I" position, the vacuum cleaner is powered up but not working; press the remote "S" button to start the vacuum motor, press the remote "V" to start the pump motor, and then press the button, and the motor stops. When the switch "o" gear is pressed, press the button motor stops, the machine is cut off and the equipment stops working.

The dust bag is suitable only for dry vacuum-cleaning!


## Maintenance – cleaning



Unplug before maintenance (Figure 1)

Take off the foamed plastic filter (Figure 3), and wash by water (Figure 5)

**IMPORTANT:** Do not use detergents to clean the filter. The filter must be thoroughly dry before the machine is used.

Correct Disposal of this product	
	This marking indicates that this product should not be disposed with other household wastes throughout the EU. To prevent possible harm to the environment or human health from uncontrolled waste disposal, recycle it responsibly to promote the sustainable reuse of material resources. To return your used device, please use the return and collection systems or contact the retailer where the product was purchased. They can take this product for environmental safe recycling.

### Warranty Information

The manufacturer provides warranty in accordance with the legislation of the customer's own country of residence, with a minimum of 1 year (Germany: 2 years), starting from the date on which the appliance is sold to the end user.

The warranty only covers defects in material or workmanship.

The repairs under warranty may only be carried out by an authorized service centre. When making a claim under the warranty, the original bill of purchase (with purchase date) must be submitted.

The warranty will not apply in cases of:

- Normal wear and tear
- Incorrect use, e.g. overloading of the appliance, use of non-approved accessories
- Use of force, damage caused by external influences
- Damage caused by non-observance of the user manual, e.g. connection to an unsuitable mains supply or non-compliance with the installation instructions
- Partially or completely dismantled appliances

**FCC Warning:**

This equipment has been tested and found to comply with the limits for a Class B digital device, pursuant to part 15 of the FCC Rules. These limits are designed to provide reasonable protection against harmful interference in a residential installation. This equipment generates, uses and can radiate radio frequency energy and, if not installed and used in accordance with the instructions, may cause harmful interference to radio communications.

However, there is no guarantee that interference will not occur in a particular installation. If this equipment does cause harmful interference to radio or television reception, which can be determined by turning the equipment off and on, the user is encouraged to try to correct the interference by one or more of the following measures:

- Reorient or relocate the receiving antenna.
- Increase the separation between the equipment and receiver.
- Connect the equipment into an outlet on a circuit different from that to which the receiver is connected.
- Consult the dealer or an experienced radio/TV technician for help.

Caution: Any changes or modifications to this device not explicitly approved by manufacturer could void your authority to operate this equipment.

This device complies with part 15 of the FCC Rules. Operation is subject to the following two conditions: (1) This device may not cause harmful interference, and (2) this device must accept any interference received, including interference that may cause undesired operation.

The device has been evaluated to meet general RF exposure requirement. The device can be used in portable exposure condition without restriction.