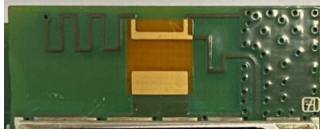


Unlicensed Transmitters: Approved Antennas List

	<i>Manufacturer</i>	<i>Antenna</i>	<i>Type</i>	<i>Peak Gain (dBi)</i>	<i>Min Cable loss (dB)</i>	<i>Ω</i>	<i>Connector Type</i>	<i>Notes</i>
1	TI	Onboard Trace	PCB	2.5		50		1
18	Taiyo Yuden	AH316M245001	Chip / Monopole	1.9		50		1

If any other simultaneous transmission radio is installed in the host platform together with this module, or above restrictions cannot be kept, a separate RF assessment and equipment certification is required.



Notes:

- 1) Approved for Mobile RF exposure configurations.