

Wifi Water Leakage Detector User Manual



* Please read this manual carefully before use and keep it for future reference.

01

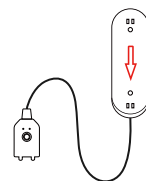
Specifications:

Input voltage: DC3V LR03
Static current: $\leq 10\mu A$
Alarm current: $\leq 160mA$
Low-Voltage indication: $\leq 2.6V$
WIFI: 802.11 b/g/n
Installation: Wall-mounted
Detection: Water-sensor detector
Working Temperature: $-10^{\circ}C - +50^{\circ}C$
Working Humidity: 95%RH

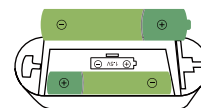
02

How to use:

1. Push the mounting bracket downward and take out the bracket, then insert the battery.



2. Put the battery into the battery bin and place it according to the graphics in the battery bin. After two batteries are loaded, the indicator lights are always on and then off.



03

3. Download TUYA Smart APP in app store or google play store, or scan the following QR code.

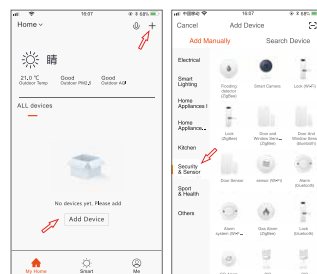


iOS / Android

04

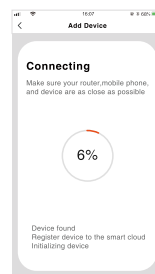
4. Register with mobile phone number, click "My Home" interface "+" or click "Add Devices" in the middle blank.

Select the security sensor and click on the Alarm system.



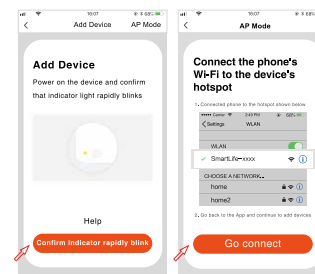
05

5. With the card pick-up pin in the accessory package, hold the reset key for more than 5 seconds, and the indicator flashes into the automatic network connection mode. Enter the WiFi password according to the prompt, and click to confirm.



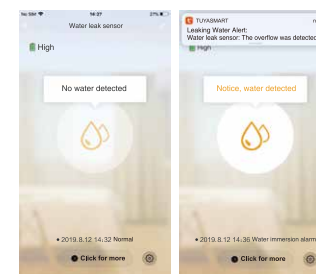
06

6. In the automatic network connection mode, the indicator flashes quickly, holds the reset key for 5 seconds with the card pick-up pin, the indicator flashes slowly, and enters the manual network connection mode. APP chooses compatible mode. According to the prompt, enter "WiFi password" and click confirmation, then switch to the WIFI settings interface. Connect Smartlife_XXXX network and return to APP to continue adding devices.



07

7. Network pairing successfully, click Water-Drop button and enter the interface. Put the probe into water, Water leakage logo will show: Water is detected; Take it out, Water leakage logo will show: No water is detected.



08

FCC Statement

This equipment has been tested and found to comply with the limits for a Class B digital device, pursuant to part 15 of the FCC Rules. These limits are designed to provide reasonable protection against harmful interference in a residential installation. This equipment generates, uses and can radiate radio frequency energy and, if not installed and used in accordance with the instructions, may cause harmful interference to radio communications. However, there is no guarantee that interference will not occur in a particular installation. If this equipment does cause harm full interference to radio or television reception, which can be determined by turning the equipment off and on, the user is encouraged to try to correct the interference by one or more of the following measures:

- Reorient or relocate the receiving antenna.
- Increase the separation between the equipment and receiver.
- Connect the equipment into an outlet on a circuit different from that to which the receiver is connected.
- Consult the dealer or an experienced radio/TV technician for help.

Caution: Any changes or modifications to this device not explicitly approved by manufacturer could void your authority to operate this equipment.

This device complies with part 15 of the FCC Rules. Operation is subject to the following two conditions:

(1) This device may not cause harmful interference, and (2) this device must accept any interference received, including interference that may cause undesired operation.

This equipment complies with FCC radiation exposure limits set forth for an uncontrolled environment. This equipment should be installed and operated with minimum distance 20cm between the radiator and your body.