

WiFi Smart Door Magnetic User Manual



* Please read this manual carefully before use and keep it for future reference.

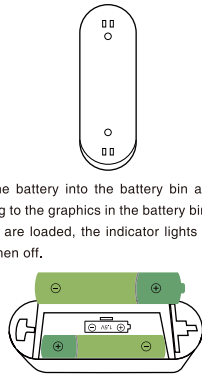
01

Specifications:

Input voltage: DC3V LR03
Quiescent Current: $\leq 10\mu A$
Alarm Current: $\leq 160mA$
Low power undervoltage: $\leq 2.7V$
WiFi: 802.11b/g/n
Magnetic control distance: $\geq 15mm$
Working temperature: $-10-50^{\circ}C$
Working humidity: max 95%RH

How to use:

1. Push the mounting bracket upward and take out the bracket, then insert the battery.



2. Put the battery into the battery bin and place it according to the graphics in the battery bin. After two batteries are loaded, the indicator lights are always on and then off.

02

3. Download TUYA Smart APP in app store or google play store, or scan the following QR code

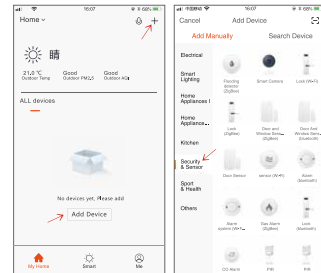


iOS / Android

03

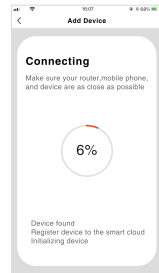
4. Register with mobile phone number, click "My Home" interface "+" or click "Add Devices" in the middle blank.

Select the security sensor and click on the door magnetic sensor.



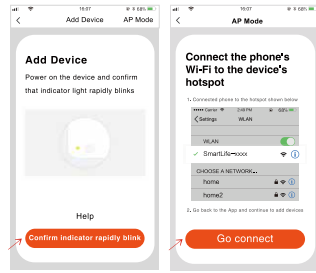
04

5. With the card pick-up pin in the accessory package, hold the reset key for more than 5 seconds, and the indicator flashes into the automatic network connection mode. Enter the WiFi password according to the prompt, and click to confirm.



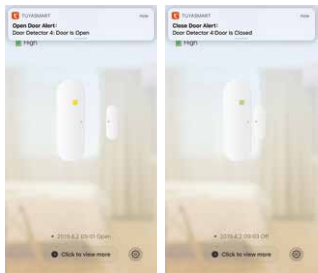
05

6. In the automatic network connection mode, the indicator flashes quickly, holds the reset key for 5 seconds with the card pick-up pin, the indicator flashes slowly, and enters the manual network connection mode. APP chooses compatible mode. According to the prompt, enter "WiFi password" and click confirmation, then switch to the WiFi settings interface. Connect Smartlife_XXXX network and return to APP to continue adding devices.



06

7. Network connection successfully, click on the door magnetic icon to enter the interface, open the door magnetic, APP will remind you the door is open, close the magnet door magnetic APP will remind you the door is closed.



08

WiFi 智能门磁说明书



* 请使用前认真阅读本说明书，并保留便于以后参考

01

产品参数

输入电压: DC3V LR03
静态电流: $\leq 10\mu A$
报警电流: $\leq 160mA$
低电欠压: $\leq 2.7V$
WiFi: 802.11b/g/n
磁控距离: $\geq 15mm$
工作温度: $-10-50^{\circ}C$
工作湿度: 最大 95%RH

使用方法:

1. 将安装支架向上推动，再向外拿出进行装电池



2. 将电池装入电池仓内，对照电池仓内图形放置，装入2节电池后，指示灯常亮后熄灭

02

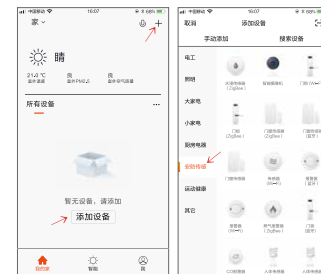
3. 在各大应用商店下载涂鸦智能APP，或扫描下方二维码二维



iOS / Android

03

4. 用手机号注册APP登陆，点击“我的家”界面“+”或点击中间空白处“添加设备”，选择安防传感，点击门磁传感器



04

5. 用配件包内的取卡针，按住复位键5秒以上，指示灯快闪进入自动配网，APP根据提示输入“WiFi密码”，点击确定



05

6. 在自动配网模式下，指示灯快闪，用取卡针按住复位键5秒，指示灯慢闪，进入手动配网模式，APP选择兼容模式，根据提示输入“WiFi密码”点击确认后切换到WiFi设置界面，连接 Smartlife_XXXX 网络返回APP继续添加设备



06

7. 配网成功，点击门磁图标进入界面，拉开门磁提醒门磁被打开，合上磁铁门磁提醒门磁已关闭



08

FCC Warning:

This equipment has been tested and found to comply with the limits for a Class B digital device, pursuant to part 15 of the FCC Rules. These limits are designed to provide reasonable protection against harmful interference in a residential installation. This equipment generates, uses and can radiate radio frequency energy and, if not installed and used in accordance with the instructions, may cause harmful interference to radio communications. However, there is no guarantee that interference will not occur in a particular installation. If this equipment does cause harmful interference to radio or television reception, which can be determined by turning the equipment off and on, the user is encouraged to try to correct the interference by one or more of the following measures:

- Reorient or relocate the receiving antenna.
- Increase the separation between the equipment and receiver.
- Connect the equipment into an outlet on a circuit different from that to which the receiver is connected.
- Consult the dealer or an experienced radio/TV technician for help.

Caution: Any changes or modifications to this device not explicitly approved by manufacturer could void your authority to operate this equipment.

This device complies with part 15 of the FCC Rules. Operation is subject to the following two conditions:

(1) This device may not cause harmful interference, and (2) this device must accept any interference received, including interference that may cause undesired operation.

This equipment complies with FCC radiation exposure limits set forth for an uncontrolled environment. This equipment should be installed and operated with minimum distance 20cm between the radiator and your body.