

成品尺寸：70x100mm    80g书纸    单色印刷    风琴折

### •Product Description



- Power button



## 1.Support Apple Find My application

The device can be called in Apple's Find My app to discover items. At the same time, if the device is lost, the Apple Find My network can help find it, which means that all Apple phones, tablets and MACs can help find it.

## 2. Search anytime

When your mobile device is bound to an anti-loss device, you can search at any time while connected. For example, the anti-loss device is controlled by your mobile phone to sound an alarm to help you find items.

### 3. One-key navigation

When the item is lost, click "Navigate Now" in the APP, and open the mobile phone map software to navigate.

-1-

#### 4. Device sharing

Supports family management. Device is shared among members, and when it is lost remotely, members can also share maps to find lost items together.

TIPS: The minimum iOS version has to be 17.0.3 or above.

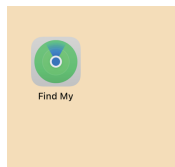
## 5. Location History

It supports recording the location of the connection status between the mobile phone and the anti-lost device and the last disconnected location between the mobile phone and the anti-lost device, which can quickly determine the lost location and mark it on the map.

## •HY tag Anti-lost Device Connection Instructions

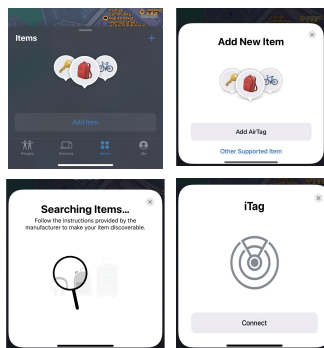
1. Long press and hold the power button of HY tag for 4-5 seconds, and the device will turn on when you hear a cheerful sound. Press and hold the power button for 4-5 seconds, and the device will shut down when you hear a brief beep or two.

2. Open the search software that comes with the ios system.



-2-

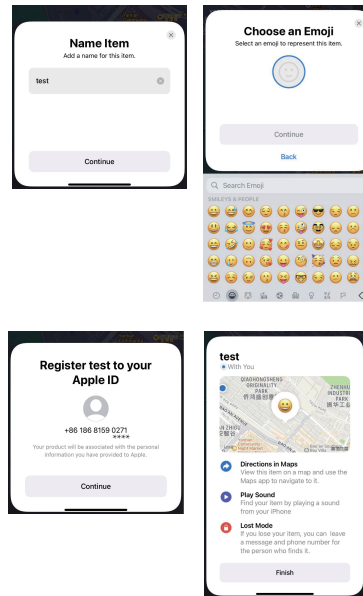
3. Click Items → Add Item → Other Supported Items → Connect



4. After the connection is successful, you can customize the username and display icons for battery level, etc.

This anti-loss device can be used for 365 days in standby mode. If you have any questions about the use of the device, please feel free to contact us through Amazon.

-3-



-4-

This device complies with part 15 of the FCC Rules. Operation is subject to the condition that this device does not cause harmful interference (1) this device may not cause harmful interference, and (2) this device must accept any interference received, including interference that may cause undesired operation.

Changes or modifications not expressly approved by the party responsible for compliance could void the user's authority to operate the equipment.

NOTE: This equipment has been tested and found to comply with the limits for a Class B digital device, pursuant to Part 15 of the FCC Rules. These limits are designed to provide reasonable protection against harmful interference in a residential installation. This equipment generates, uses and can radiate radio frequency energy and, if not installed and used in accordance with the instructions, may cause harmful interference to radio communications. However, there is no guarantee that interference will not occur in a particular installation.

If this equipment does cause harmful interference to radio or television reception,

which can be determined by turning the equipment off and on, the user is encouraged to try to correct the interference by one or more of the following measures:

- Reorient or relocate the receiving antenna.
- Increase the separation between the equipment and receiver.
- Connect the equipment into an outlet on a circuit different from that to which the receiver is connected.
- Consult the dealer or an experienced radio/TV technician for help.

The device has been evaluated to meet general RF exposure requirement. The device can be used in portable exposure condition without restriction.

FCC ID: 2BBDK-TAG-2