

Owner's Manual

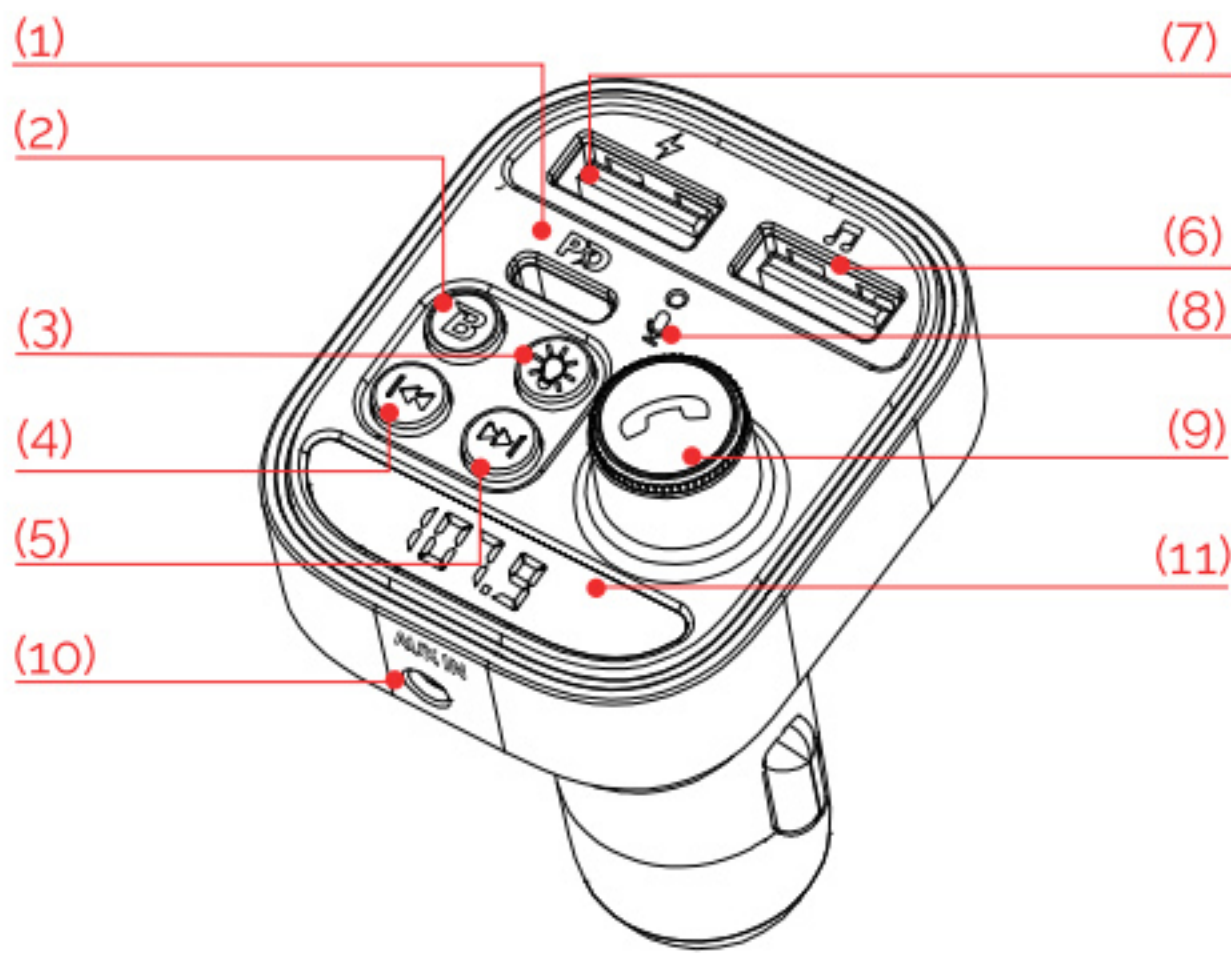
Safety Instructions

- Please read this manual carefully before using
- Keep these instructions
- Do not disassemble
- Do not expose directly to sunlight or open flame
- Pay attention to the road and do not operate this product while driving

Introduction

Features:

- Input 12-24V
- Bluetooth hands-free calling
- USB 1: 5V/2.4A with intelligent input current management
- Type-C : PD 30W
- Support USB flash drive playing
- Support Aux in
- Car battery monitor



1. Type-C charging port

3. LED light control

5. Next song

7. USB1 charging port

9. Multifunction knob button:
change frequency; volume +/-;
answer & hang up calls
2. EQ

4. Previous song

6. USB2 flash drive reading
& playing port

8. Microphone

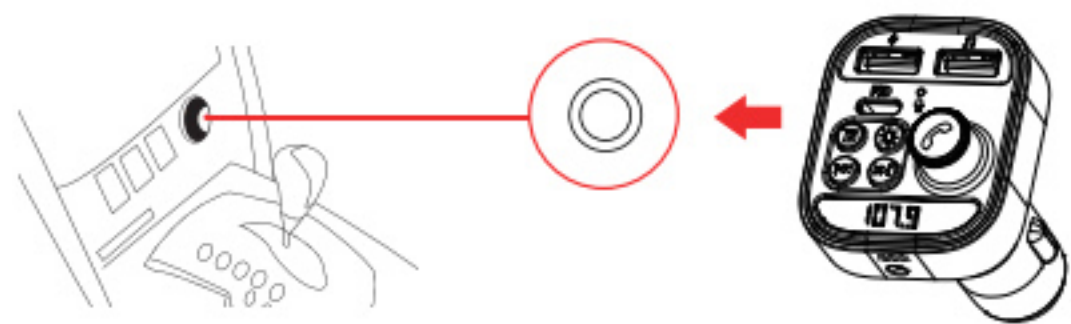
10. Aux in

11. LED display

LED Indicator	Status
13.5	Car battery voltage
BT	Bluetooth ready to pair

Get it Ready for Playing

1. Plug T18 into your car cigarette lighter socket.



2. LED display light will turn on and show "13.5- bt"
3. Connecting Bluetooth: When LED display reads "bt," it is in pairing mode, and voice prompt will say "Waiting for connection."

On your smartphone, enable Bluetooth function, search for available devices, select "T18," and pair with it. Once connected, listen for voice prompt "Bluetooth connection success." You are now paired.



Play Music

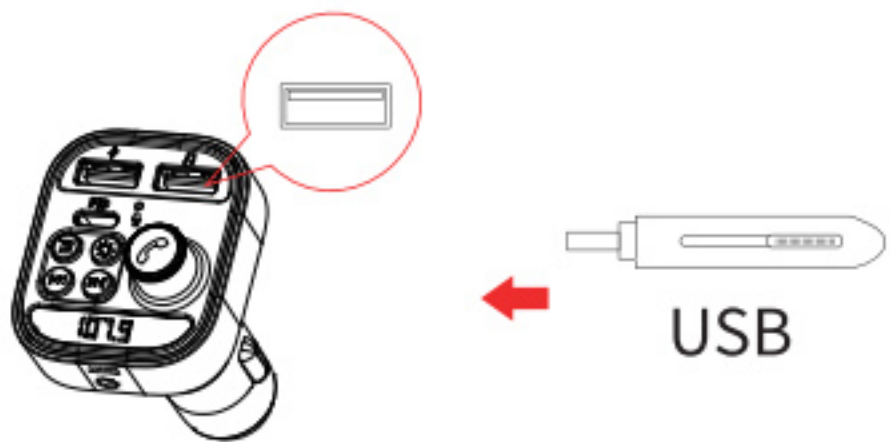
Playing music from your phone:

After steps 1-5, you can start playing audio using your smartphone. The music will stream via the Bluetooth A2DP function.

Play/Pause	Press
Previous/Next track	Press
Volume	Rotate

Playing music from USB flash drive:

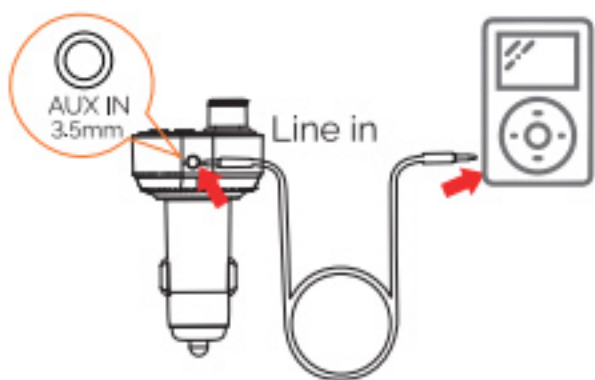
Plug USB flash drive into the USB port on the side with the "🎵" icon. BT IS will start playing automatically.



Play/Pause	Press
Previous/Next track	Press
USB	USB flash drive ready to play (when you plug in a USB flash drive)
001	Song 001 playing
Volume	Rotate

Play music from Aux in:

For your other player like MP3/MP4 etc. Connect your device to T18 with Aux cable, you can play your music from MP3/MP4 device via T18



How to switch playing modes

Press and >>I to switch playing amount BT/USB/AUX IN . How to changes EQ

There is two EQ setting , normal and bass . press and hold >>I to switch from normal to bass . press again to switch back from bass to normal .

Hands-Free Call

After you set up playing, you can also use the hands-free function.

Answer an incoming call	Press
Reject an incoming call	Press and hold
Hang up a call	Press
Recall last incoming/outgoing call	Quickly press twice

Under music playing status (BT/USB flash drive), if there is a call coming in, it will switch to call mode automatically. After hanging up, it will switch back to playing mode automatically.

Charge Your Device

It has one Type-C port and two USB ports, with a total max 42w output in intelligent current sharing mode:

- PD Type-C" PD 30W
- USB1: 5V/2.4A charging port
- USB 2: 5V/1A Max & USB flash drive port: This port is used for changing low current devices. Mainly it is used for USB flash drive playing.

Specifications

DC input: 12V-24V
Output: Type C PD 30W for iPhone
Bluetooth connect distance: 10m
Audio format: MP3, WMA, APE, WAV
USB capacity support: ≤64Gb
Working temperature range: -20°C to 40°C
Storage temperature range: -40°C to 75°C

FCC Warning Statement Changes or modifications not expressly approved by the party responsible for compliance could void the user's authority to operate the equipment. This equipment has been tested and found to comply with the limits for a Class B digital device, pursuant to Part 15 of the FCC Rules. Theselimits are designed to provide reasonable protection against harmful interference in a residential installation. This equipment generates uses and can radiate radio frequency energy and, if not installed and used in accordance with the instructions, may cause harmful interference to radio communications. However, there is no guarantee that interference will not occur in a particular installation. If this equipment does cause harmful interference to radio or television reception,which can be determined by turning the equipment off and on, the user is encouraged to try tocorrect the interference by one or more of the following measures:-- Reorient or relocate the receiving antenna.-- Increase the separation between the equipment and receiver.--Connect the equipment into an outlet on a circuit different from that to which the receiver is connected.-- Consult the dealer or an experienced radio/TV technician for help.This device complies with part 15 of the FCC Rules. Operation is subject to the following two conditions: (1) This device may not cause harmful interference, and(2) this device must accept any interference received, including interference that maycause undesired operation.The device has been evaluated to meet general RF exposure requirement. The device can be used in portable exposure condition without restriction.