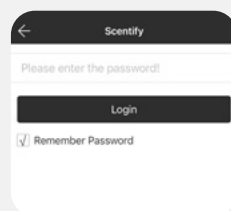


S CONNECTING TO APP



②



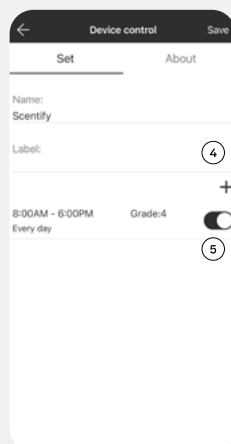
③

1. Open the "Google Play" store or "App Store" on your smartphone, search for the **Scentify** app and download.

NOTE: Make sure the Bluetooth and Location function of your mobile phone is turned "ON".

2. Open the Scentify app on your smartphone and select your device.

3. Enter the default password **8888** and press Login.



④

⑤

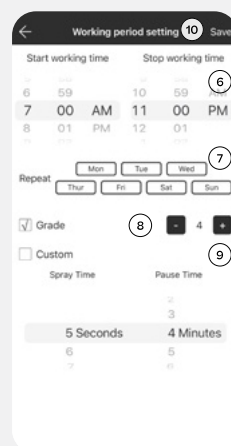
On the Device Control page;

4. You can change your device name and label information of your scent machine.

NOTE: Press the "Save" button at the top right corner of the screen after each change.

5. Press the schedule you would like to edit.

NOTE: You can set up to 5 different schedules by pressing the + button. To delete a schedule, swipe left. Press the toggle button to turn on/off any schedule.



⑥

⑦

⑧

⑨

On the "Working period setting" page;

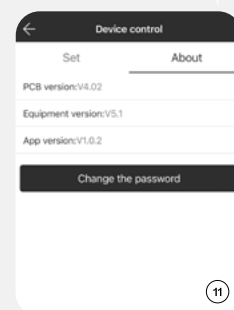
6. Set the hours of the day you want your diffuser to run by scrolling the "Start working time" and "Stop working time".

7. Select the days of the week you want your diffuser to run (all days are pre-selected).

8. Press + or - to increase or decrease the preset intensity grades (1-4). See chart for details.

9. Check (✓) the Custom box to create a custom intensity and scroll scroll the "Spray Time" and "Stop Time".

NOTE: Press the "Save" button to update the settings.



⑪

11. You can change the default password by pressing on the "About" tab, in the "Device control" page.

CONCENTRATION AND CONSUMPTION

Grade	G1	G2	G3	G4
Pausing time	360	270	180	90
Consumption (ml/hr)	0.07	0.10	0.14	0.26

NOTES:

1. The working time for each grade is 15s
2. Different oils may vary with above times

LOVE AT FIRST SCENT

MANUAL

HOME PLUG-IN DIFFUSER V2

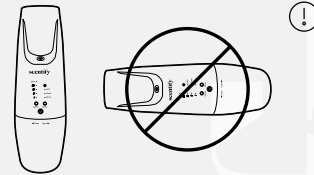


LOVE AT FIRST SCENT

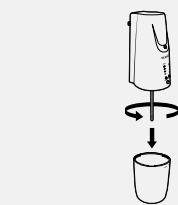
210.00 mm

PLEASE READ BEFORE USE

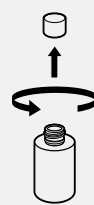
Do not pour oil into bottom cup.
Always keep upright.
Tilting machine will cause damage.



GETTING SET UP



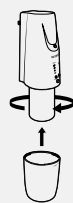
①
Unscrew the bottom cover.



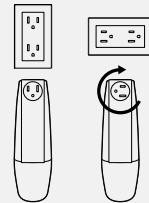
②
Unscrew bottle cap to fill with desired oil fragrance.



③
Guide tube into the bottle, and screw bottle into base of the diffuser unit.
NOTE: There is a filter in the tube, do not remove.



④
Screw bottom cover onto the base of the diffuser unit.



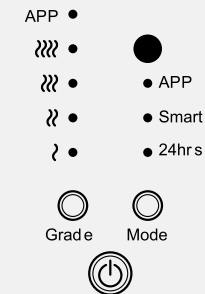
⑤
Plug in unit to outlet. Make sure that unit is always upright to avoid leakage. Rotate plug prongs if necessary.

scntify

@scntifynyc

scntifyhome.com

OPERATIONS



APP Custom app setting
Preset to Spray time: 15 seconds
Pause time: 10 minutes
Smart Works with daylight or artificial light
24hrs Works 24 hours
Mode = Hours
POWER ON/OFF
Hold for 2 seconds

APP Custom app setting
Preset to 8:00am - 8:00pm
Smart Works with daylight or artificial light
24hrs Works 24 hours

Mode = Hours

POWER ON/OFF
Hold for 2 seconds

WARNINGS

Always keep the diffuser upright. Tilted or angled will cause oil to overflow and damage the diffuser.

EQUIPMENT CLEANING

1. Fill the bottle with water and vinegar or rubbing alcohol.
2. Let the diffuser run for about 5 minutes.
3. Drain the diffuser bottle completely.
4. Using a cotton swab dipped in vinegar, clean the tight spots and corners of the diffuser to make sure that no spots are left dirty.

MAINTENANCE & STORAGE

- Always turn off or unplug the diffuser when not in use.
- Remove the bottle of oil when storing or transporting the diffuser.
- Store the diffuser in a dry and clean place.

TROUBLESHOOTING

Problem	Solution
No Diffusion	<ul style="list-style-type: none">- Check if the power is ON or OFF.- Check oil level in bottle- Check app settings or switch to button settings.- Follow cleaning instructions above.
Oil Leaking	<ul style="list-style-type: none">- Check if bottle is screwed in tightly.

scntify

@scntifynyc

scntifyhome.com

FCC Statement

This equipment has been tested and found to comply with the limits for a Class B digital device, pursuant to part 15 of the FCC Rules. These limits are designed to provide reasonable protection against harmful interference in a residential installation. This equipment generates, uses and can radiate radio frequency energy and, if not installed and used in accordance with the instructions, may cause harmful interference to radio communications. However, there is no guarantee that interference will not occur in a particular installation. If this equipment does cause harmful interference to radio or television reception, which can be determined by turning the equipment off and on, the user is encouraged to try to correct the interference by one or more of the following measures:

- Reorient or relocate the receiving antenna.
- Increase the separation between the equipment and receiver.
- Connect the equipment into an outlet on a circuit different from that to which the receiver is connected.
- Consult the dealer or an experienced radio/TV technician for help.

Caution: Any changes or modifications to this device not explicitly approved by manufacturer could void your authority to operate this equipment.

This device complies with part 15 of the FCC Rules. Operation is subject to the following two conditions: (1) This device may not cause harmful interference, and (2) this device must accept any interference received, including interference that may cause undesired operation.

RF Exposure Information

This equipment complies with FCC radiation exposure limits set forth for an uncontrolled environment. This equipment should be installed and operated with minimum distance 20cm between the radiator and your body.